

Flight Procedures Cover Page	Task Action: FLIGHT CHECK	Task Type: IAP	Estimated Chart Date: 04/22/2021	APWS Task ID: EF3EA5F6357C474D9B81D816F673F1F7	APWS Project ID: 16D895676CC446BB982DDCC1320AD3BA
Procedure: RNAV (GPS) RWY 6 AMDT 2		Enroute: NO	Specialist: Cannon, Brett		Agreement Number:
Airport ID: KHNZ			Airport City: OXFORD		State: NC
Facility ID:	Facility Type:	Flight Inspection Remark Type: New FC Slot			
<div> <div> Procedure Comments: ACTIVE AIRNAV DATA USED FOR KHNZ THIS CANCELS FDC 9/0002 CONTACT INFO: DAVID TEFFETELLER AJV-A433 MANAGER. </div> <div> <div>QUALITY</div> <div>SN 6/14/21 6</div> <div>CHECKED</div> </div> </div> <div> <div>QUALITY</div> <div>41</div> <div>CHECKED</div> </div>					

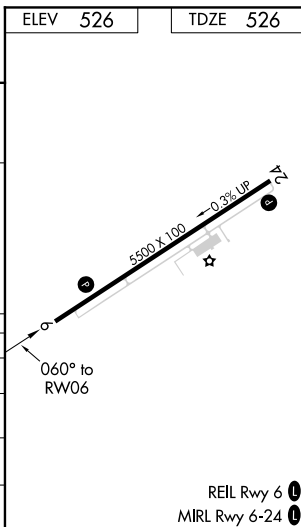
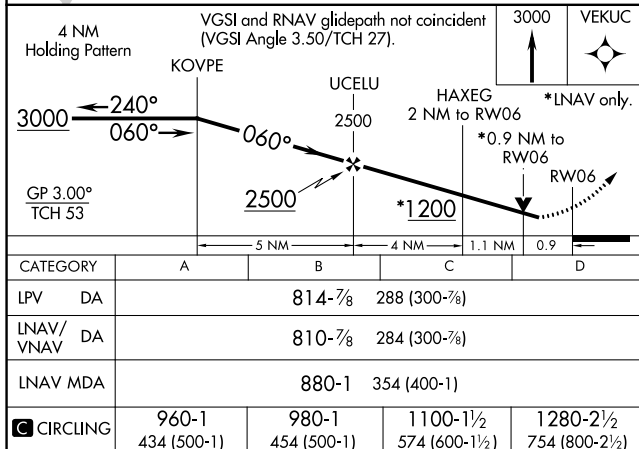
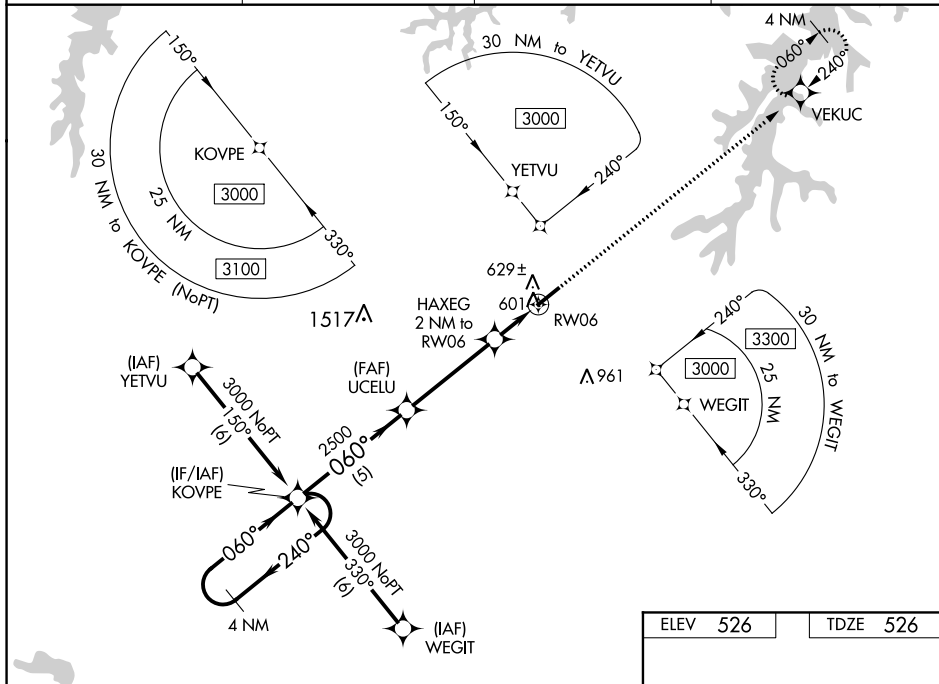
WAAS CH 45709 W06A	APP CRS 060°	Rwy Idg 5500 TDZE 526 Apt Elev 526
--	------------------------	---

RNAV (GPS) RWY 6
HENDERSON-OXFORD (HNZ)

⚠ For uncompensated Baro-VNAV systems, LNAV/VNAV NA below -16°C (4°F) or above 54°C (130°F).
⚠ DME/DME RNP-0.3 NA. When local altimeter setting not received, use Roxboro altimeter setting and increase all DA 64 feet and all MDA 80 feet; increase LPV and LNAV/VNAV all Cats visibility ¼ mile, LNAV and Circling Cats C and D visibility ¼ mile. Baro-VNAV and VDP NA when using Roxboro altimeter setting. Helicopter visibility reduction below ¾ SM NA.

MISSED APPROACH:
Climb to 3000 direct
VEKUC and hold.

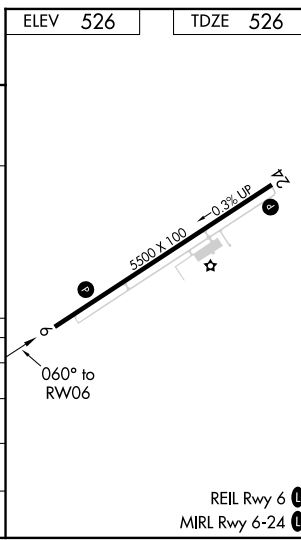
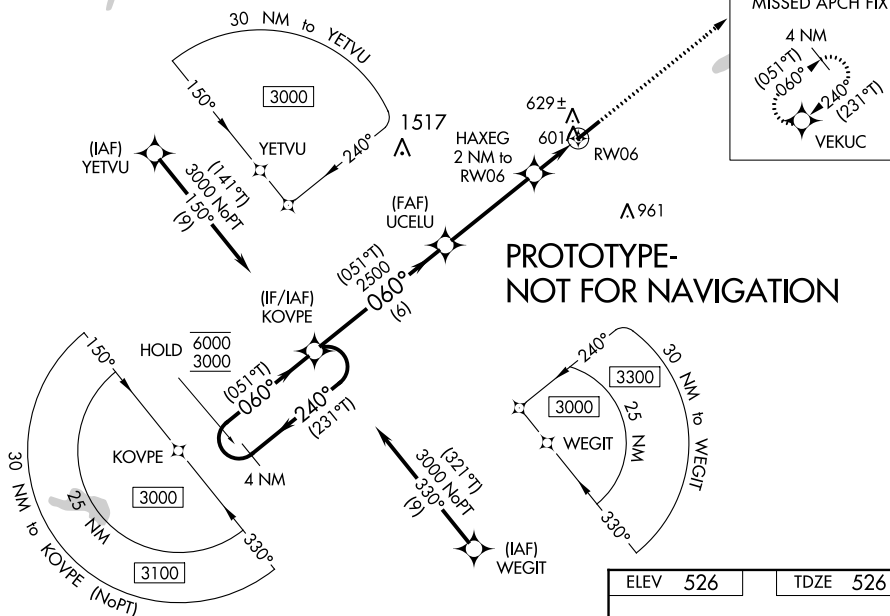
AWOS-3 118.625	RALEIGH APP CON 132.35 256.9	GCO 135.075	UNICOM 122.8 (CTAF) 0
--------------------------	--	-----------------------	---------------------------------

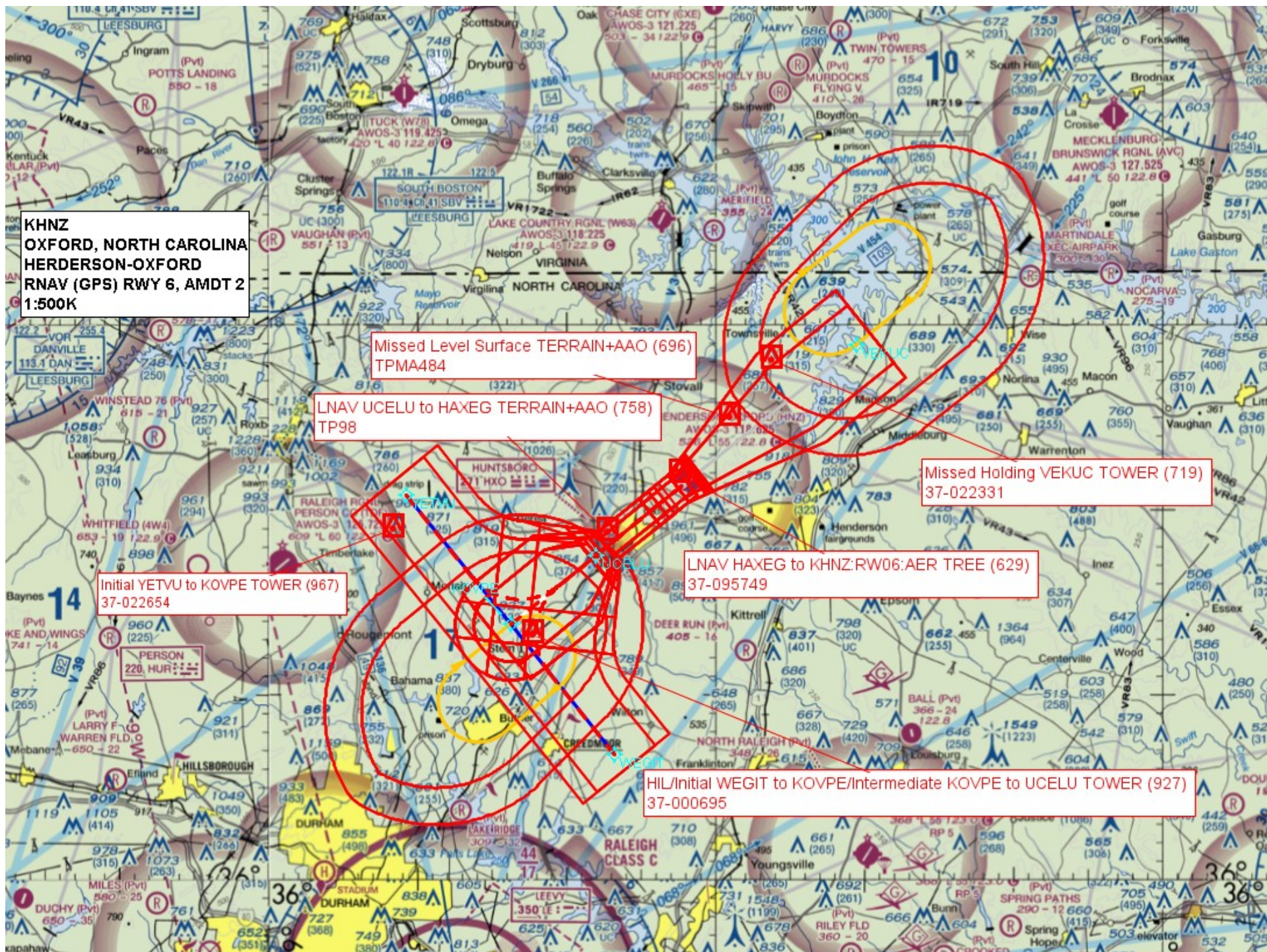


RNAV (GPS) RWY 6
HENDERSON-OXFORD (HNZ)

MISSED APPROACH:
Climb to 3000 direct
VEKUC and hold.

UNICOM
122.8(CTAF) **L**





KHNZ
OXFORD, NORTH CAROLINA
HENDERSON-OXFORD
TAA-STRAIGHT-IN
1:500K

TAA Straight-In Sector 1 Stepdown
TOWER (1548)37-001488

TAA Straight-In Sector 1 TOWER (2048)
37-001064

TAA Left Base 150 CW 240 TERRAIN+AAO (955)
TPTAALB_742

KHNZ
OXFORD, NORTH CAROLINA
HERDERSON-OXFORD
RNAV (GPS) RWY 6, AMDT 2
TAA-LEFT BASE
1:500K

