

Flight Procedures Cover Page	Task Action: Cancellation	Task Type: IAP	Estimated Chart Date: 08/12/2021	APWS Task ID: EEB831F0818A40018FD8A5CEDC6A8D51	APWS Project ID: 1D1B7F41DE6B4132A92141B9C5CB4CEB
Procedure: NDB RWY 21 AMDT 10A		Enroute: NO	Specialist: Copeland, Guy		Agreement Number:
Airport ID: KMQW			Airport City: MC RAE		State: GA
Facility ID:	Facility Type:	Flight Inspection Remark Type:			
<div> <div>Procedure Comments: CANCELLATION</div> <div>CONTACT DAVE TEFFTeller 301-427-4767</div> </div> <div>QUALITY 45 CHECKED</div>					

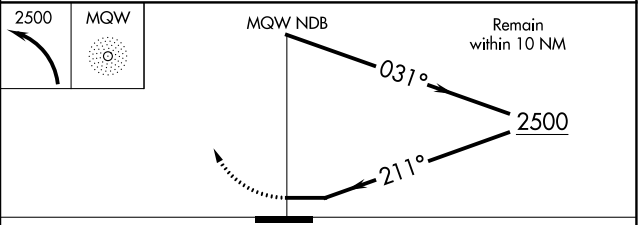
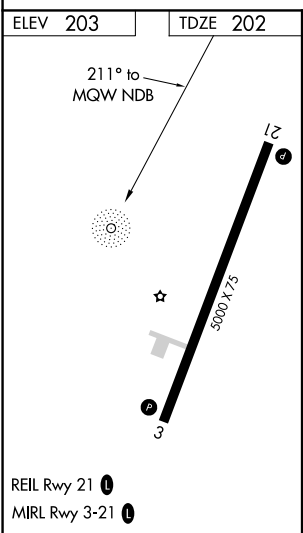
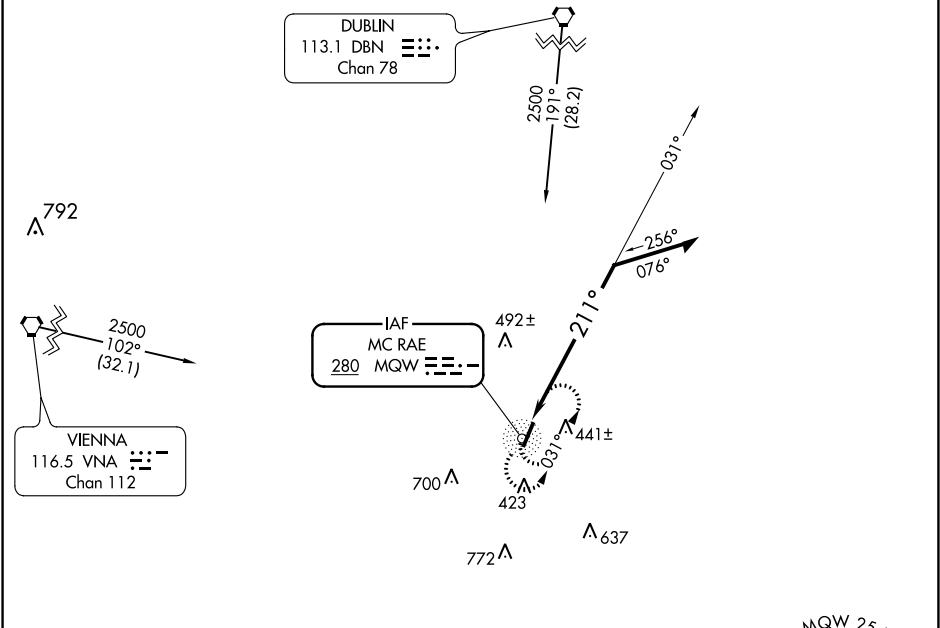
NDB	MQW	APP CRS	Rwy Idg	5000
	280	211°	TDZE	202
			Apt Elev	203

NDB RWY 21
TELFAIR-WHEELER (MQW)

▼ Use Vedralia altimeter setting; when not received use Alma alimeter setting and increase all MDA 20 feet, and increase S-21 and Circling Cat C and D visibility ¼ mile. Rwy 21 helicopter visibility reduction below 1 SM NA. Straight-in Rwy 21 NA at night, Circling Rwy 21 NA at night.

MISSED APPROACH: Climbing left turn to 2500 in MQW NDB holding pattern, continue climb-in-hold to 2500.

VDI AWOS-3 119.925	JACKSONVILLE CENTER 127.575 269.025	CTAF 122.9 0
------------------------------	-----------------------------------------------	------------------------



CATEGORY	A	B	C	D
S-21	1000-1 798 (800-1)	1000-1¼ 798 (800-1¼)	1000-2¼ 798 (800-2¼)	1000-2½ 798 (800-2½)
CIRCLING	1000-1 797 (800-1)	1000-1¼ 797 (800-1¼)	1000-2¼ 797 (800-2¼)	1000-2½ 797 (800-2½)

SE-4, 25 FEB 2021 to 25 MAR 2021

SE-4, 25 FEB 2021 to 25 MAR 2021