

Flight Procedures Cover Page	Task Action: P-NOTAM	Task Type: IAP	Estimated Chart Date: 10/07/2021	APWS Task ID: EDFE8F500FB048E7A6B0D9C1E9A0B812	APWS Project ID: 84EA15205A1E40478104CB7C06B2145F
Procedure: VOR RWY 13 AMDT 5E		Enroute: NO	Specialist: Marsh, Andre		Agreement Number:
Airport ID: KONL			Airport City: O'NEILL		State: NE
Facility ID: ONL	Facility Type: VORTAC	Flight Inspection Remark Type:			
<p>Procedure Comments: P-NOTAM CIRCLING RADII INCREASE CONTACT JASON KRETSCHMER, AJV-A421, 405-954-4019</p> <div style="display: flex; justify-content: space-between; align-items: flex-end;"> <div style="text-align: center;"> <p><i>Digitally signed by</i> <b>JASON KRETSCHMER</b> Aug 05, 2021</p> </div> <div style="text-align: center;"> <p><i>Digitally signed by</i> <b>MARY MCDONALD</b> Jul 29, 2021</p> </div> </div>					

QUALITY  
47  
CHECKED

QUALITY  
12  
CHECKED

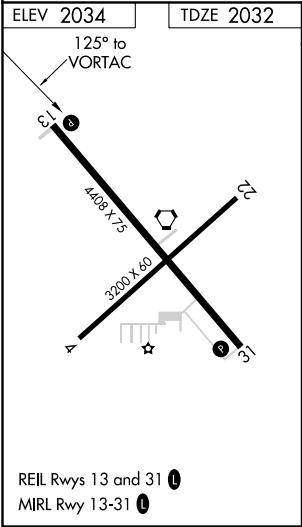
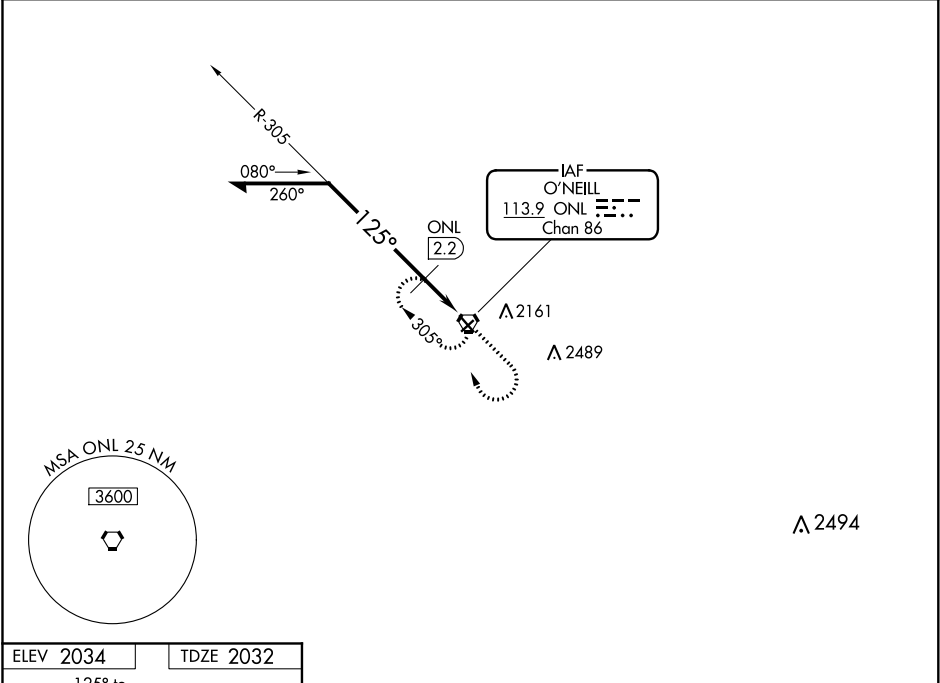
VORTAC ONL <b>113.9</b> Chan <b>86</b>	APP CRS <b>125°</b>	Rwy Idg TDZE Apt Elev <b>4408</b> <b>2032</b> <b>2034</b>
--	------------------------	--




VOR RWY 13

THE O'NEILL MUNI-JOHN L BAKER FIELD (ONL)

<b>▽</b> Night landing: Rwy 4, 22 NA.	MISSED APPROACH: Climb to 3600 then right turn direct ONL VORTAC and hold.
--	--

AWOS-3 <b>121.125</b>	MINNEAPOLIS CENTER <b>128.0 257.95</b>	UNICOM <b>122.8</b> (CTAF) <b>0</b>
--------------------------	---	--



<div>Remain within 10 NM</div> <div>ONL VORTAC</div> <div>3600</div> <div>ONL 2.2</div> <div>2500</div> <div>305°</div> <div>125°</div> <div>1.8 NM</div> <div>0.4</div>		<div>3600</div> <div></div>	<div></div>	<div>ONL</div> <div></div>
CATEGORY	A	B	C	D
S-13	2500-1	468 (500-1)	2500-1¼ 468 (500-1¼)	2500-1½ 468 (500-1½)
CIRCLING	2600-1	566 (600-1)	2600-1½ 566 (600-1½)	2600-2 566 (600-2)
DME MINIMUMS				
S-13	2420-1 388 (400-1)			2420-1¼ 388 (400-1¼)
CIRCLING	2600-1	566 (600-1)	2600-1½ 566 (600-1½)	2600-2 566 (600-2)

