

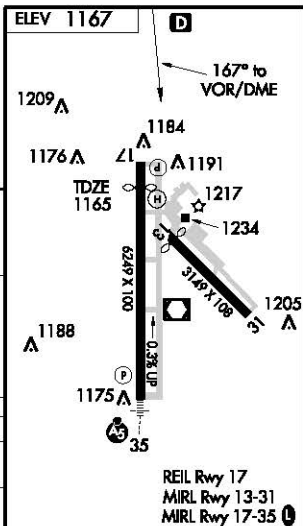
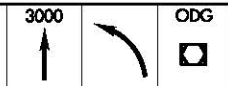
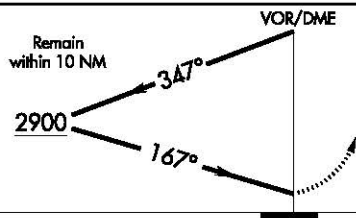
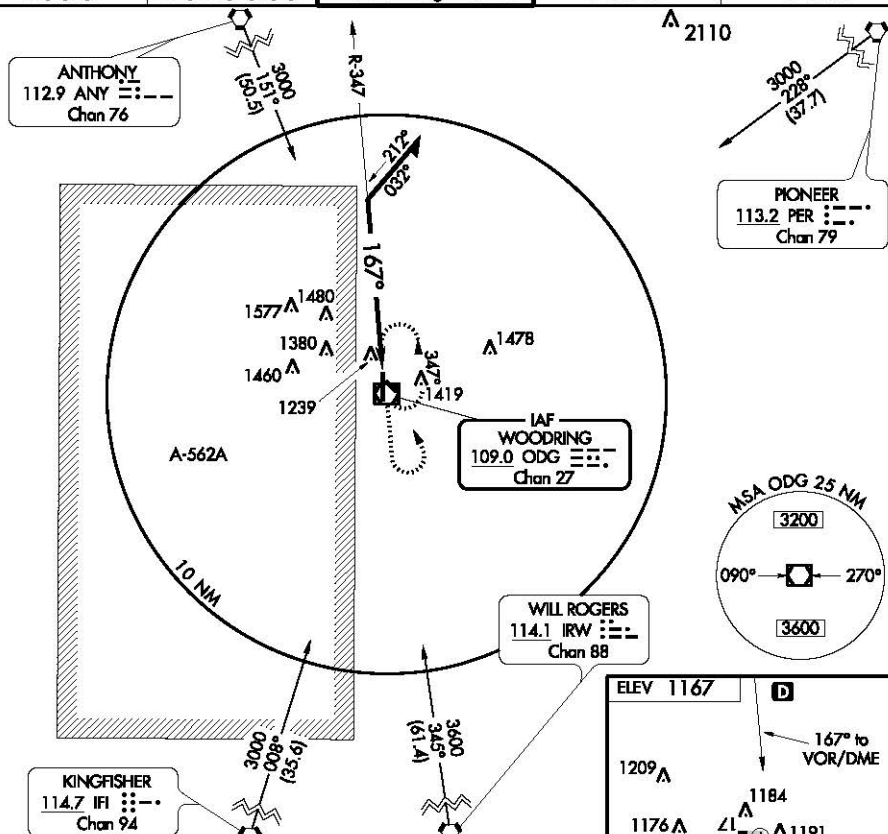


| | | | | | | |
|--|---------------|-----------------------------|---|---|---------------------------------------|-------------------------------------|
| Flight Procedure Tracking Form | | Action: AMENDMENT | Task Type: IAP | Date Open: 04/18/2019 | Task #: 2019041827748005003 | Request #: 20190418277480 |
| Procedure: VOR RWY 17 AMDT 13A | | | Airport ID: KWDG | Airport: ENID WOODRING RGNL | | Reimbursable #: NO |
| City: ENID | ST: OK | GPS #: | Estimated Chart Date: 03/26/2020 | | FICO #: | |
| Fac ID: ODG | | Fac. Type: VOR_DME | | | Specialist: JAMES LAFFERTY | |
| Procedure Review | | | | | | |
| | Rec'd | Rel'd | Full Name | Comments | | |
| Lead: | 09/10/2019 | | | <div style="text-align: right;">   </div> | | |
| QA: | | | | | | |
| Liaison: | | | | | | |
| Procedure Comments: | | | Remark Type: INFORMATION | | | |
| <p>ACTIVE DATA USED FOR KWDG PROCEDURE AMENDMENT.</p> <p>VOR MON - ANY VORTAC</p> <p>PROCESSED IAW AIRCRAFT OPERATIONS GROUP (AJW-33) MEMO, OCTOBER 3, 2018, SUBJECT: FLIGHT INSPECTION REVIEW NOT REQUIRED.</p> <p>CONTACT DAVE TEFFETELLER AT 202-267-5177</p> | | | | | | |

OLD

VOR RWY 17
ENID WOODRING RGNL (WDG)

MISSED APPROACH: Climb to 3000 then left turn direct ODG VOR/DME and hold.

UNICOM
122.95

36°23'N-97°47'W

ENID WOODRING RGNL (WDG)
VOR RWY 17

SC-1, 17 NOV 2011 to 15 DEC 2011

SC-1, 17 NOV 2011 to 15 DEC 2011