

Flight Procedures Cover Page	Task Action: P-NOTAM	Task Type: IAP	Estimated Chart Date: 12/30/2021	APWS Task ID: ED52C6DBB11747F4B3118B6D2A9998B1	APWS Project ID: D96A90659DA94676A035CA976FF2BBB8
Procedure: LOC RWY 30AMDT 1E		Enroute: NO	Specialist: Thibodeaux, Charles		Agreement Number:
Airport ID: KDVK			Airport City: DANVILLE		State: KY
Facility ID:	Facility Type:	Flight Inspection Remark Type:			
<p>Procedure Comments: ORDER 8260.3, CHAPTER 2, NEW CIRCLING CRITERIA APPLIED CONTACT JASON KRETSCHMER, AJV-A421, 405-954-4019</p> <p style="text-align: center;"><i>Digitally signed by</i> JASON KRETSCHMER Oct 27, 2021</p> <div style="position: absolute; top: 260px; right: 100px;"> </div>					

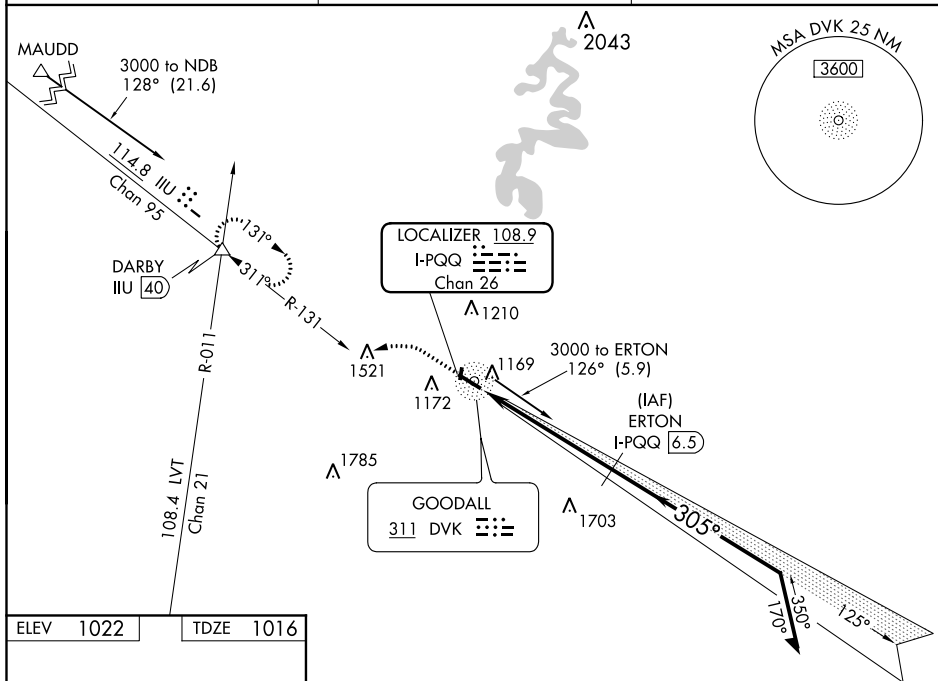
LOC/DME I-PQQ 108.9 Chan 26	APP CRS 305°	Rwy Idg 5000 TDZE 1016 Apt Elev 1022
---	------------------------	---

LOC RWY 30
STUART POWELL FIELD (DVK)

T When local dimmer selling not received, use Lexington dimmer selling and increase all MDA 80 feet; increase S-30 Cat C-D visibility and Circling Cat C-D visibility $\frac{1}{4}$ mile. **A** NA Rwy 30 helicopter visibility reduction below $\frac{3}{4}$ SM NA. Rwy 1, 19 helicopter visibility reduction below 1 SM NA. DME required. Circling Rwy 1 19 NA at night.

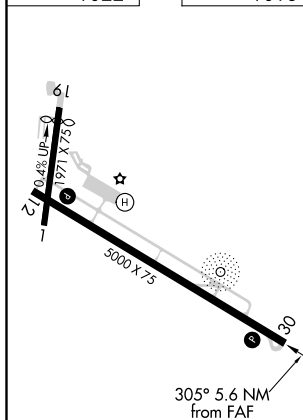
MISSED APPROACH: Climb to 2000 then climbing left turn to 3000 on heading 260° and IIR R-131 to DARBY INT and hold.

AWOS-3 128.325	LEXINGTON APP CON 120.15 259.3	UNICOM 122.8 (CTAF) ①
--------------------------	--	---------------------------------



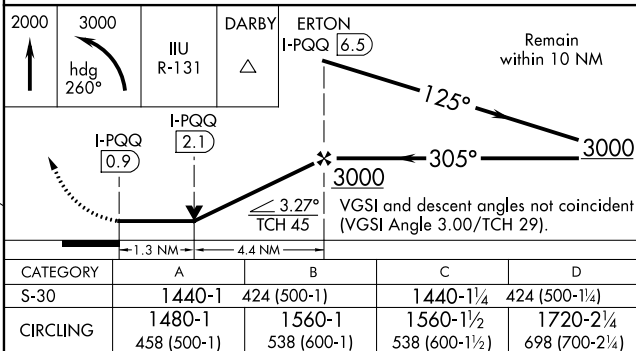
SE-1, 12 AUG 2021 to 09 SEP 2021

ELEV	1022		TDZE	1016
------	------	--	------	------



REIL Rwy 30 **L**
MIRL Rwy 12-30 **L**

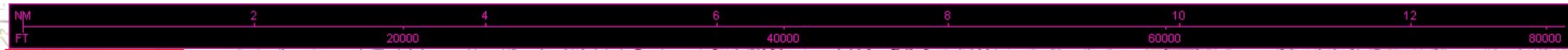
DME REQUIRED



DANVILLE, KENTUCKY
Amdt 1D 07DEC17

STUART POWELL FIELD (DVK)
LOC RWY 30

37°35'N-84°46'W



KDVK
LOC RWY 30
100K

