

Flight Procedures Cover Page	Task Action: FLIGHT CHECK	Task Type: IAP	Estimated Chart Date: 03/21/2024	APWS Task ID: ED061FC2849F4865A5668D4DDDE8B373	APWS Project ID: ACF33AEC1F1A4EB1B5E4F1AEEEEAAA492
Procedure: RNAV (GPS) RWY 12R AMDT 0E		Enroute: NO	Specialist: Larue, Derek		Agreement Number:
Airport ID: KCPS			Airport City: CAHOKIA/ST LOUIS		State: IL
Facility ID:	Facility Type:	Flight Inspection Remark Type: New FC Slot			
<div>Procedure Comments: P-NOTAM CLEARs NOTAM FDC 3/5066. CONTACT RAKE MCGRAW, AJV-A422, 405-954-8711.</div> <div><div>QUALITY 32 CHECKED</div><div>Digitally signed by <b>PABLO ORTIZ-JR</b> Nov 20, 2023</div></div>					

<b>FIPC BASIC FORM</b>						
<b>PROCEDURE:</b> RNAV (GPS) RWY 12R AMDT 0E			<b>AIRPORT NAME:</b> ST LOUIS DOWNTOWN		<b>AIRPORT ID:</b> KCPS	<b>SPECIAL CONTROL NO:</b> BG-12-056-23
<b>FAC ID:</b> KCPS12R		<b>CITY:</b> CAHOKIA/ST LOUIS			<b>ST:</b> IL	<b>ORIG CHART DATE:</b> 02/22/2024
<b>DFL TYPE:</b> PROC/G	<b>THIRD PARTY:</b> <input type="checkbox"/> YES	<b>EST. TIME ON SITE:</b> 0.5	<b>REIMB. NUMBER:</b>	<b>PTS TASK ID:</b> ED061FC2849F4865A5668D4DDDE8B373		
<b>PREFLIGHT NOTES</b>						
<b>REVIEWER:</b> scott wiebe					<b>DATE:</b> 01/12/2024	
<b>COMMENTS:</b>					<b>CHECK ONE:</b>	
					<input checked="" type="checkbox"/> FLT CK REQ <input type="checkbox"/> NFCR <input type="checkbox"/> REJECT	
						<b>YES</b>
					<b>CPV COMPLETE?</b>	
					<b>X</b>	
<b>PROCEDURE RESULTS</b>						
<b>INSPECTION DATE:</b> 01/11/2024	<b>CREW #:</b> VN219	<b>N #:</b> N69	<b>INSTRUMENT PROCEDURE STATUS:</b> <input checked="" type="checkbox"/> SAT <input type="checkbox"/> SAT W/CHANGES <input type="checkbox"/> UNSAT		<b>ARINC CODING:</b> <input type="checkbox"/> SAT <input type="checkbox"/> SAT/GOLD <input type="checkbox"/> UNSAT	
<b>FLIGHT INSPECTOR SIGNATURE:</b> scott wiebe @ 01/12/2024 05:59			<b>PRINTED NAME:</b> WIEBE, GREGORY SCOTT			<b>NOTAM INITIATED?</b> <input type="checkbox"/> YES <input checked="" type="checkbox"/> NO
<b>FLIGHT INSPECTOR REMARKS:</b> Coding not checked - only change requiring flight was feeder segment DELMA-ZINKI.						
<b>IN-FLIGHT OBSTACLE REPORT</b>						
<b>OBSTRUCTION ID #:</b>	<b>COORDINATES OR LOCATION:</b>	<b>GNSS ALTITUDE (MSL):</b>	<b>BAROMETRIC ALTITUDE (MSL):</b>	<b>HEIGHT ABOVE GROUND LEVEL:</b>		

OLD

CAHOKIA/ST LOUIS, ILLINOIS

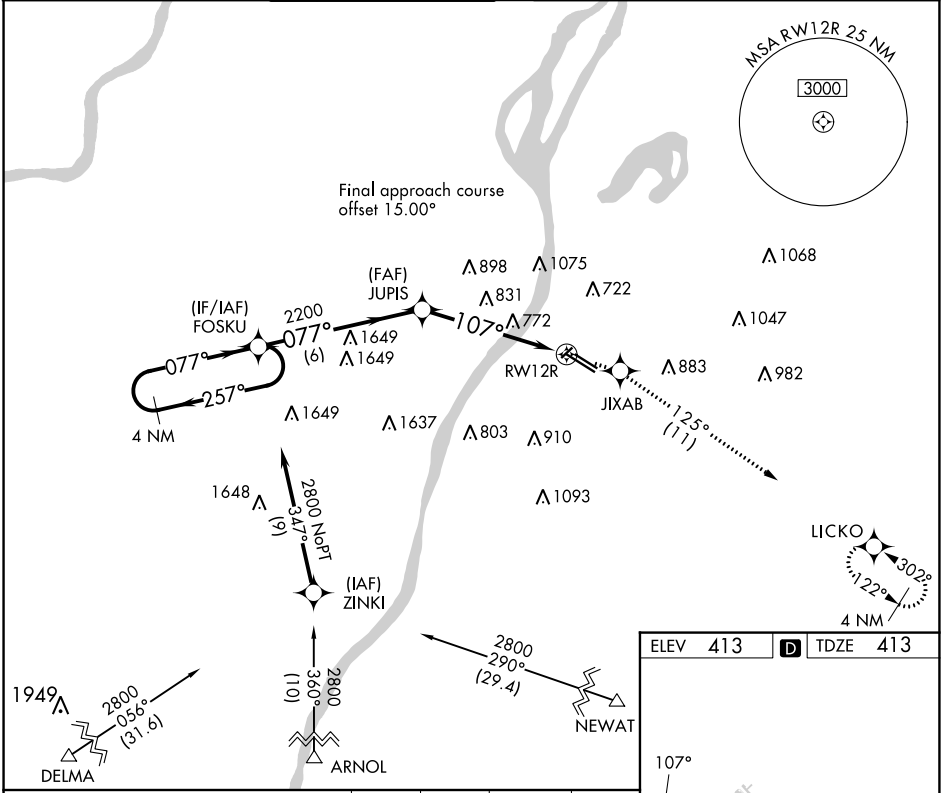
AL-5316 (FAA)

23054

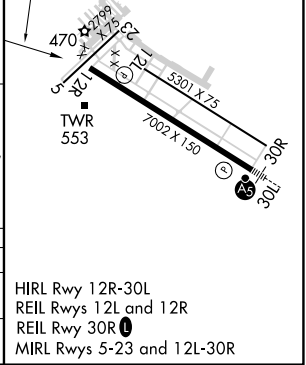
APP CRS	Rwy Idg	7002
107°	TDZE	413
	Apt Elev	413

RNAV (GPS) RWY 12R  
ST LOUIS DOWNTOWN (CPS)

RNP APCH.				MISSED APPROACH: Climb to 2200 direct JIXAB and right turn on 125° track to LICKO and hold.		
When local altimeter setting not received, use St Louis Lambert Intl altimeter setting and increase all MDAs 80 feet; increase LNAV Cats B/C/D and Circling Cat C visibility ¼ SM. Circling Rwy 5 NA at night. Rwy 12R helicopter visibility reduction below ¼ SM NA.						
ATIS	ST LOUIS APP CON	DOWNTOWN TOWER ★	GND CON	CLNC DEL	CLNC DEL	UNICOM
121.45	123.7 371.875	119.925 (CTAF) 0 379.3	121.8	118.275	121.8 (when twr closed)	122.95



4 NM Holding Pattern		2200 JIXAB LICKO	
2800 ← 257° 077° →		tr 125°	
VDP NA when using St Louis Lambert Intl altimeter setting.		2.1 NM to RWY 12R	
6 NM		3.3 NM	
CATEGORY	A	B	D
LNAV MDA	1140-1 727 (800-1)	1140-2 727 (800-2)	1140-2 ¼ 727 (800-2 ¼)
CIRCLING	1140-1 727 (800-1)	1240-2 ½ 827 (900-2 ½)	1380-3 967 (1000-3)



CAHOKIA/ST LOUIS, ILLINOIS  
Orig-D 25MAR21

38°34'N-90°09'W

ST LOUIS DOWNTOWN (CPS)  
RNAV (GPS) RWY 12R

EC-3, 07 SEP 2023 to 05 OCT 2023

EC-3, 07 SEP 2023 to 05 OCT 2023



