

Flight Procedures Cover Page	Task Action: P-NOTAM	Task Type: IAP	Estimated Chart Date: 10/08/2020	APWS Task ID: ECEBDA9566E84FC781ED950B8253DDC4	APWS Project ID: 4FBCEE0A460445B5B4CB92A24391D585
Procedure: VOR/DME-A AMDT 4D		Enroute: NO	Specialist: Miller, Ralph		Agreement Number:
Airport ID: KPKV	Airport Name: CALHOUN COUNTY		Airport City: PORT LAVACA		State: TX
Facility ID: PSX	Facility Type: VORTAC	Flight Inspection Remark Type:			
<div>Procedure Comments:</div> <div>P-NOTAM</div> <div>CIRCLING ICON</div> <div>PROCESSED IAW AIRCRAFT OPERATIONS GROUP (AJF-10) MEMO, APRIL 29, 2020, SUBJECT: FLIGHT INSPECTION REVIEW NOT REQUIRED</div> <div>ACTIVE DATA USED.</div> <div>CONTACT JASON KRETSCHMER, AJV-A421, (405)-954-4019</div> <div><div>QUALITY 30 CHECKED</div><div>7/29 BBLUE</div></div>					

PORT LAVACA, TEXAS

AL-5904 (FAA)

18032

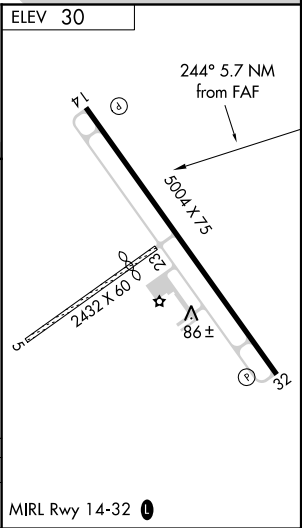
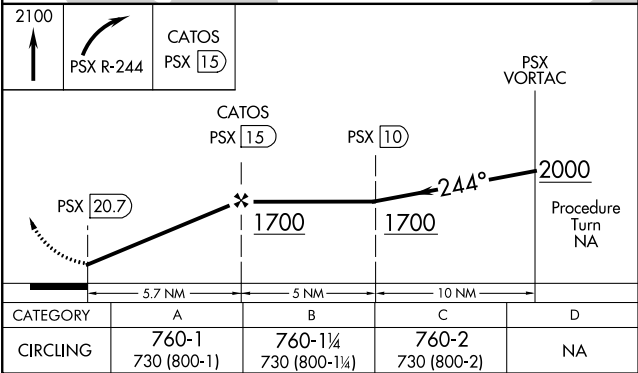
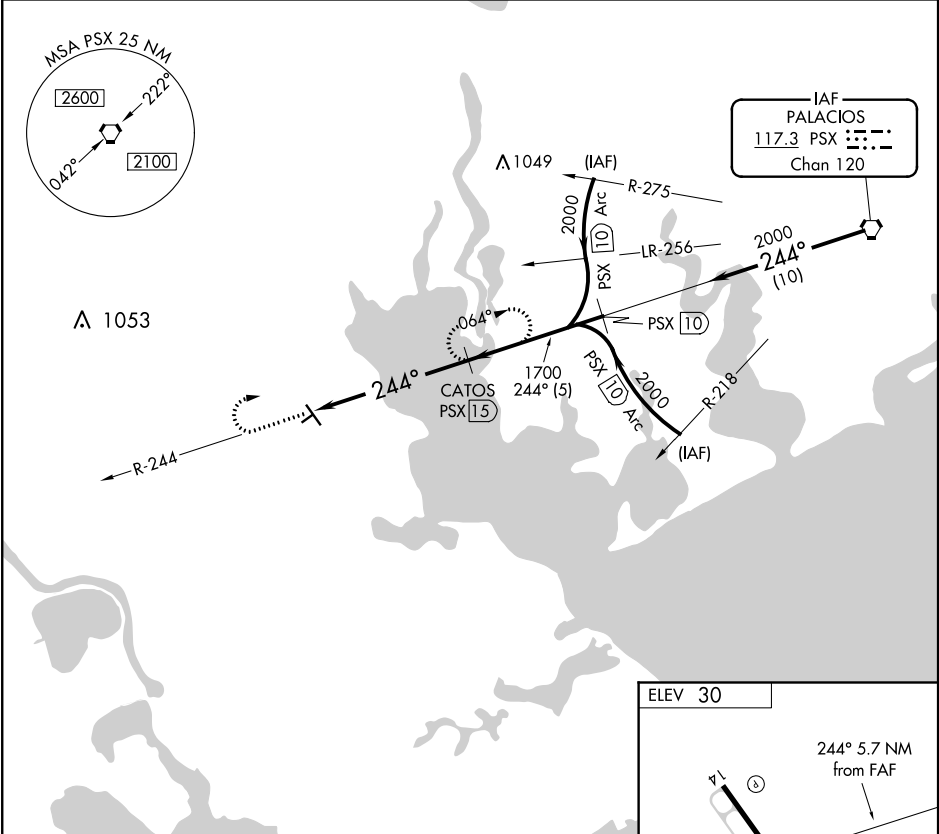
VORTAC PSX 117.3 Chan 120	APP CRS 244°	Rwy Idg TDZE Apt Elev N/A N/A 30
-----------------------------------------------	------------------------	----------------------------------------------------------------------

OLD

VOR/DME-A
CALHOUN COUNTY (PKV)

▲ NA	When local altimeter setting not received, use Victoria altimeter setting. Circling NA to Rwy 5 and 23. Night landing: Rwy 32 NA. Helicopter visibility reduction below 1 SM NA.	MISSED APPROACH: Climb to 2100, then right turn via PSX VORTAC R-244 to CATOS/PSX 15 DME and hold.
------	----------------------------------------------------------------------------------------------------------------------------------------------------------------------------------	----------------------------------------------------------------------------------------------------

AWOS-3 118.275	HOUSTON CENTER 128.15 350.3	UNICOM 122.8 (CTAF) 0
--------------------------	---------------------------------------	---------------------------------



PORT LAVACA, TEXAS
Amdt 4C 15OCT15

28°39'N-96°41'W

CALHOUN COUNTY (PKV)
VOR/DME-A

SC-5, 27 FEB 2020 to 26 MAR 2020

SC-5, 27 FEB 2020 to 26 MAR 2020

RNAV (GPS) RWY 32 ORIG FLIGHT INSPECTION MAP

**KPKV
CALHOUN COUNTY
PORT LAVACA, TX
1:100,000**

