

OLD

AL-5259 (FAA)

20198

WAAS CH 56506 W07A	APP CRS 069°	Rwy Idg TDZE Apt Elev	5350 959 959
--	------------------------	-----------------------------	---

RNAV (GPS) RWY 7

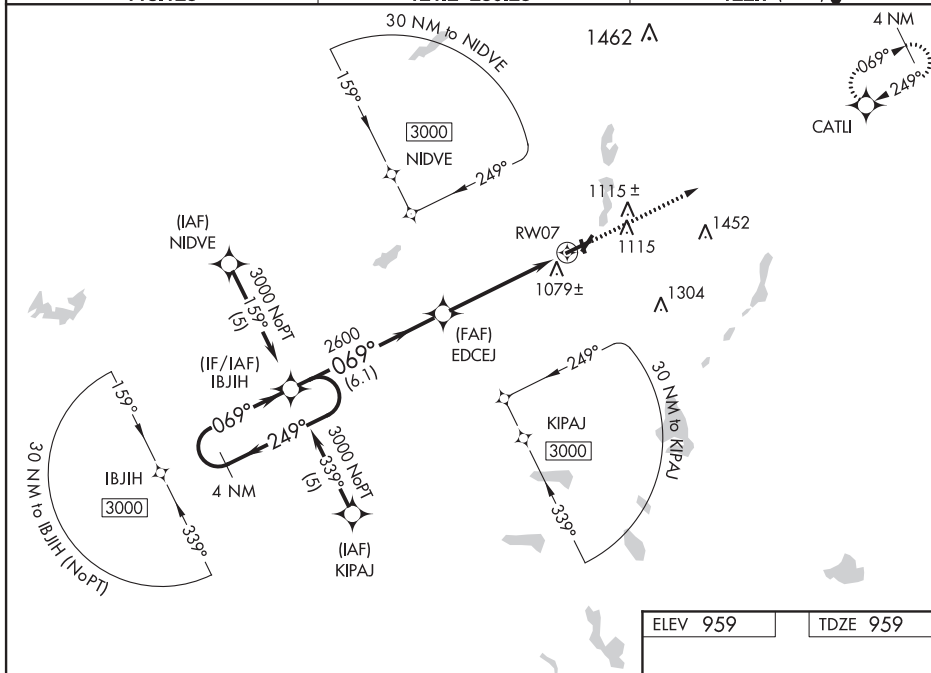
BRANCH COUNTY MEMORIAL (OEB)

RNP APCH.

T Rwy 7 helicopter visibility reduction below $\frac{3}{4}$ SM NA. Baro-VNAV NA when using Sturgis altimeter setting. For uncompensated Baro-VNAV systems, LNAV/VNAV NA below -16°C or above 54°C . Circling NA to Rwy 16 and 34. When local altimeter setting not received, use Sturgis altimeter setting and increase all DAs 48 feet and LPV visibility $\frac{1}{4}$ mile all Cats and all MDAs 60 feet and LNAV Cat C visibility $\frac{1}{4}$ mile.

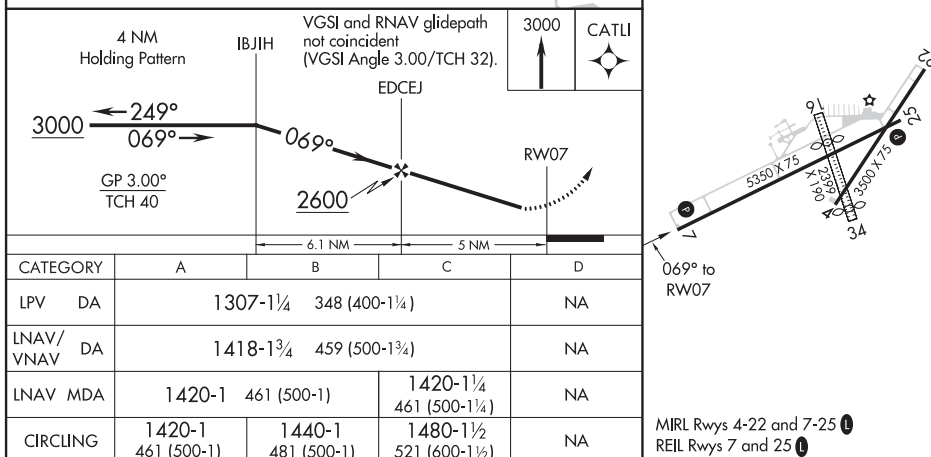
MISSED APPROACH:
Climb to 3000 direct
CATL and hold.

AWOS-3 118.125	GREAT LAKES APP CON * 121.2 239.25	UNICOM 122.7 (CTAF) 1
--------------------------	--	--



EC-1, 16 JUL 2020 to 13 AUG 2020

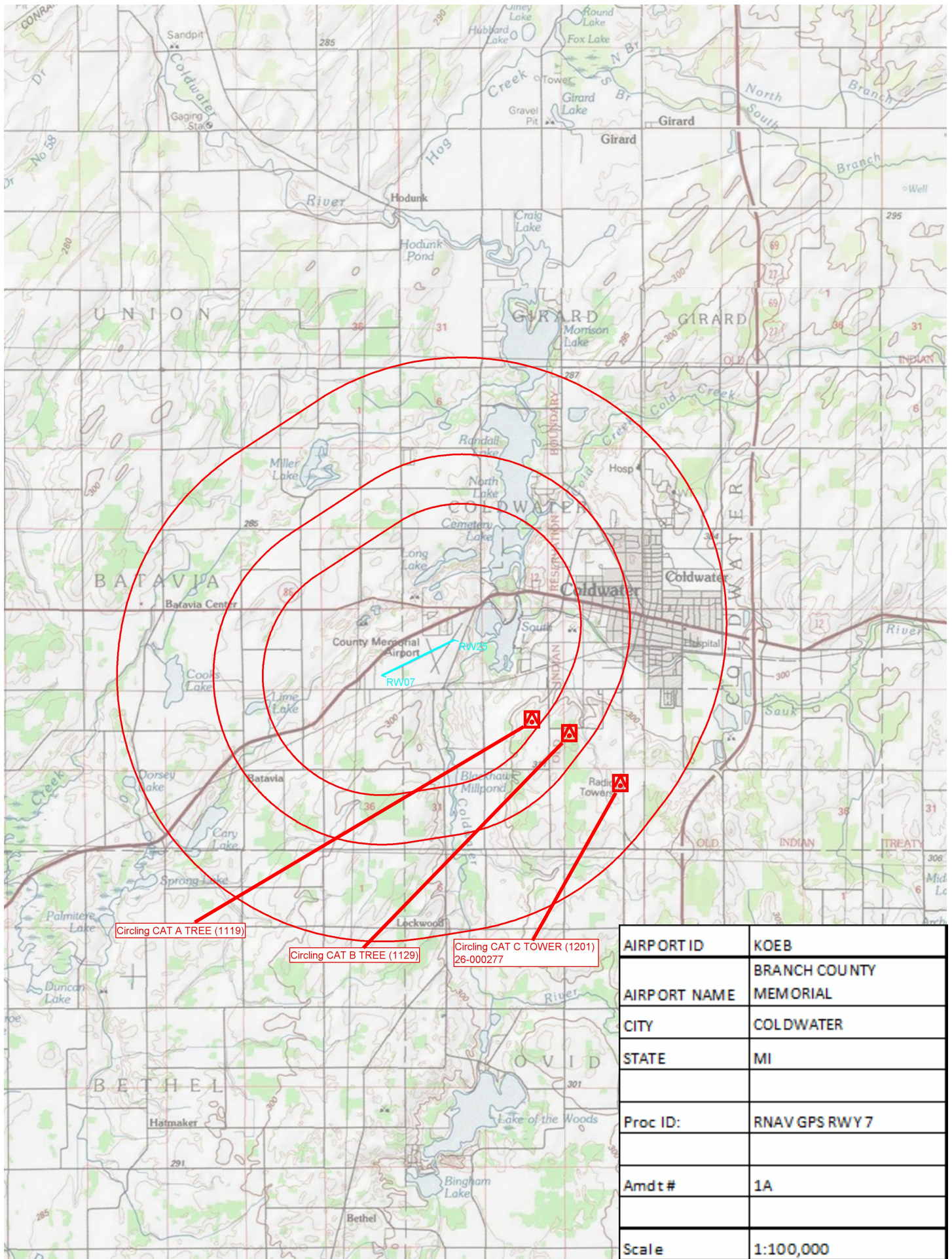
EC-1, 16 JUL 2020 to 13 AUG 2020



COLDWATER, MICHIGAN
Amdt 1A 16JUL20

41°56'N-85°03'W

BRANCH COUNTY MEMORIAL (OEB)
RNAV (GPS) RWY 7



Circling CAT A TREE (1119)

Circling CAT B TREE (1129)

Circling CAT C TOWER (1201)
26-000277

AIRPORT ID	KOEB
AIRPORT NAME	BRANCH COUNTY MEMORIAL
CITY	COLDWATER
STATE	MI
Proc ID:	RNAV GPS RWY 7
Amdt #	1A
Scale	1:100,000