

Flight Procedures Cover Page	Task Action: FLIGHT CHECK	Task Type: IAP	Estimated Chart Date: 08/10/2023	APWS Task ID: EC95DFC610F546F4B7735F0F119DF1A8	APWS Project ID: 8E4706D817E34C85A8CBBAF7A4586DA3
Procedure: ILS OR LOC RWY 6 AMDT 2		Enroute: NO	Specialist: Tucker, Andre		Agreement Number:
Airport ID: KTDF			Airport City: ROXBORO		State: NC
Facility ID:	Facility Type:	Flight Inspection Remark Type: New FC Slot			
<p>Procedure Comments: DAN VOR VORMON.</p> <p>ACTIVE DATA USED FOR KTDF AIRPORT AND RWY. PENDING DATA USED FOR I-TDF.</p> <p>CONTACT ERIC SUSKI: (405) 954-7331.</p> <div><div><div>06/27/2023: THIS IS AN UPDATED COPY OF THE FORM DEVELOPED ON 03/03/2023: 1. HEADING: CHANGED REQUIRED EFFECTIVE DATE FROM ROUTINE TO 08/10/2023</div><div>J ZEDER 06/27/2023</div><div><div>QUALITY 16 CHECKED</div></div></div><div><div><div>Digitally signed by ERIC N SUSKI Jun 27, 2023</div></div><div><div>QUALITY 33 CHECKED</div><div>QUALITY 34 CHECKED</div></div></div></div>					

LOC/DME I-TDF  
**108.7**  
Chan **24**

APP CRS  
**060°**

Rwy Idg  
TDZE  
Apt Elev  
**5702**  
**604**  
**609**

RALEIGH RGNL AT PERSON COUNTY (TDF)

ILS or LOC RWY 6

▼

▲ NA

For inop ALS, S-LOC 6 visibility Cats C/D to 1 3/4 SM and increase FIPIR fix minimums S-LOC 6 visibility Cats C/D to 1 SM.

MALSR

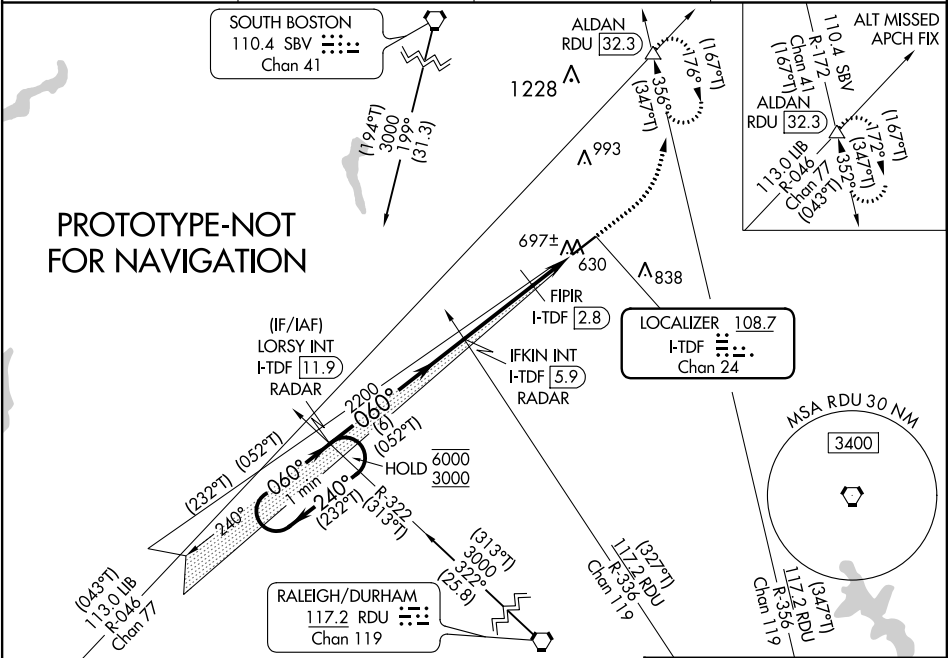
MISSED APPROACH: Climb to 1500 then climbing left turn to 3000 on heading 021° and on RDU VORTAC R-356 to ALDAN INT/RDU 32.3 DME and hold, continue climb-in-hold to 3000.

AWOS-3  
**126.725**

RALEIGH APP CON  
**132.35 256.9**

GCO  
**119.7**

UNICOM  
**122.7 (CTAF)**



One Minute Holding Pattern

LORSY INT  
I-TDF **11.9**  
RADAR

IFKIN INT  
I-TDF **5.9**  
RADAR

1500

3000

hdg 021°

RDU R-356

ALDAN

6000

3000

GS 3.00°

TCH 40

2200

1220

6 NM

3.1 NM

0.8 NM

1.1 NM

CATEGORY	A	B	C	D
S-ILS 6	804-1/2 200 (200-1/2)			
S-LOC 6	1220-1/2	616 (700-1/2)	1220-1 3/8	616 (700-1 3/8)
CIRCLING	1220-1	611 (700-1)	1300-2	1300-2 1/4
			691 (700-2)	691 (700-2 1/4)
FIPIR FIX MINIMUMS				
S-LOC 6	980-1/2	376 (400-1/2)	980-5/8	376 (400-5/8)
CIRCLING	1080-1	471 (500-1)	1300-2	1300-2 1/4
			691 (700-2)	691 (700-2 1/4)

ELEV 609

TDZE 604

REIL Rwy 24

MIRL Rwy 6-24

FAF to MAP 4.9 NM

Knots

60

90

120

150

180

Min:Sec

4:54

3:16

2:27

1:58

1:38

LOC/DME I-TDF <b>108.7</b> Chan <b>24</b>	APP CRS <b>060°</b>	Rwy Idg TDZE Apt Elev	<b>5702</b> <b>604</b> <b>609</b>
---	------------------------	-----------------------------	---

**OLD**

# ILS or LOC RWY 6

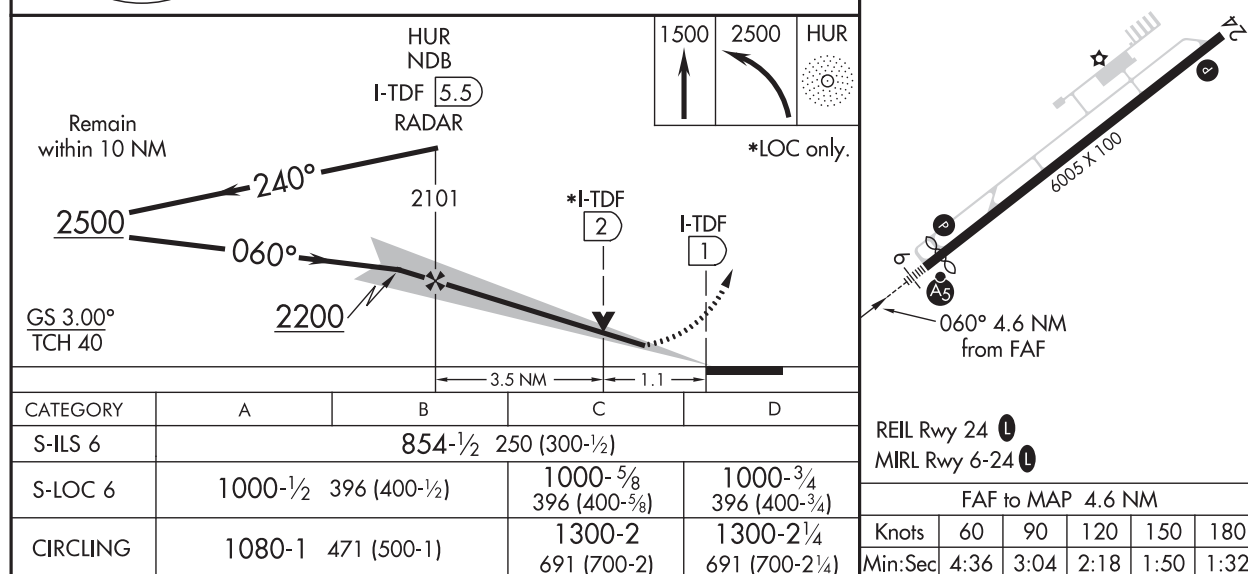
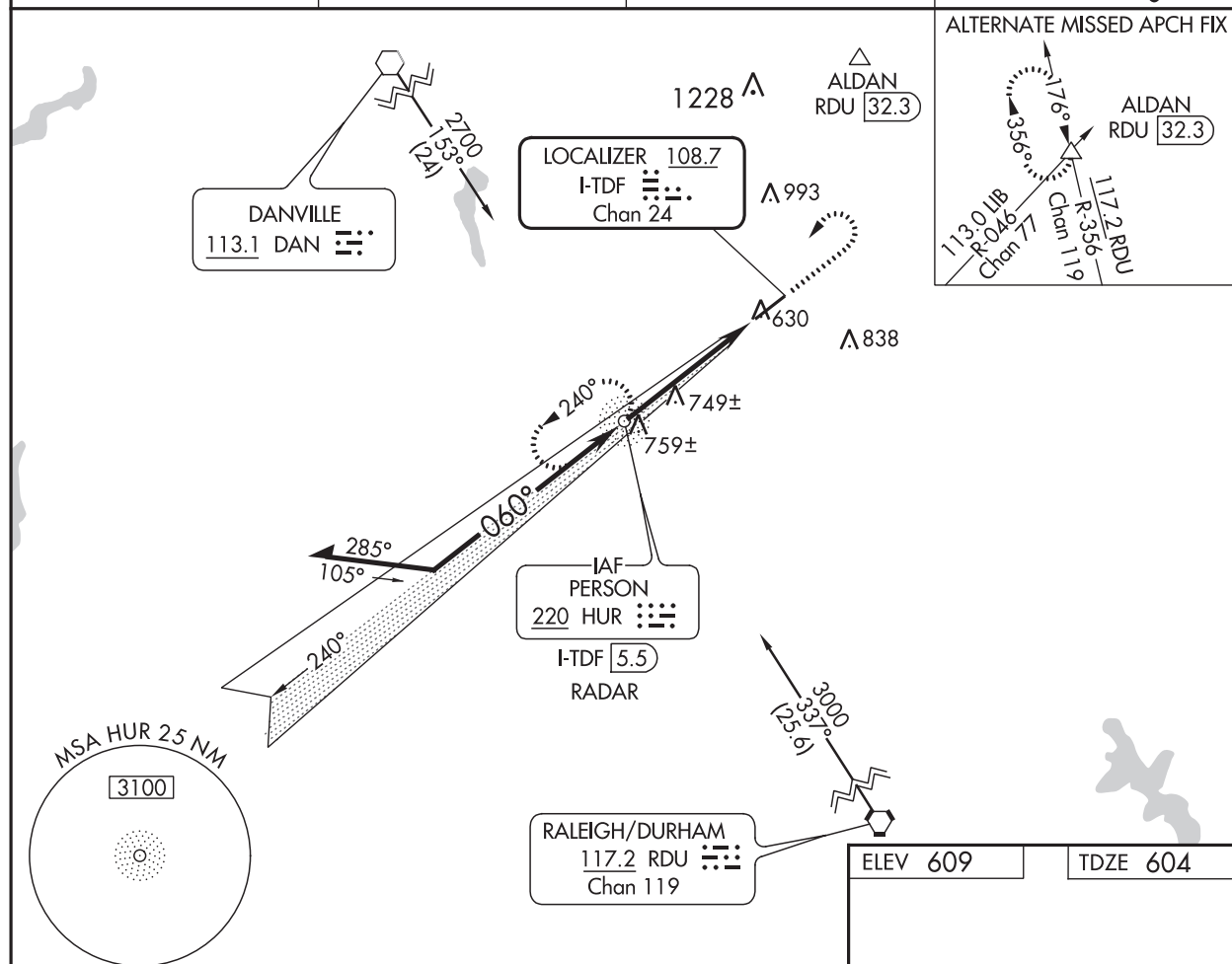
RALEIGH RGNL AT PERSON COUNTY (TDF')

ADF required.



MISSED APPROACH: Climb to 1500 then climbing left turn to 2500 direct HUR NDB and hold.

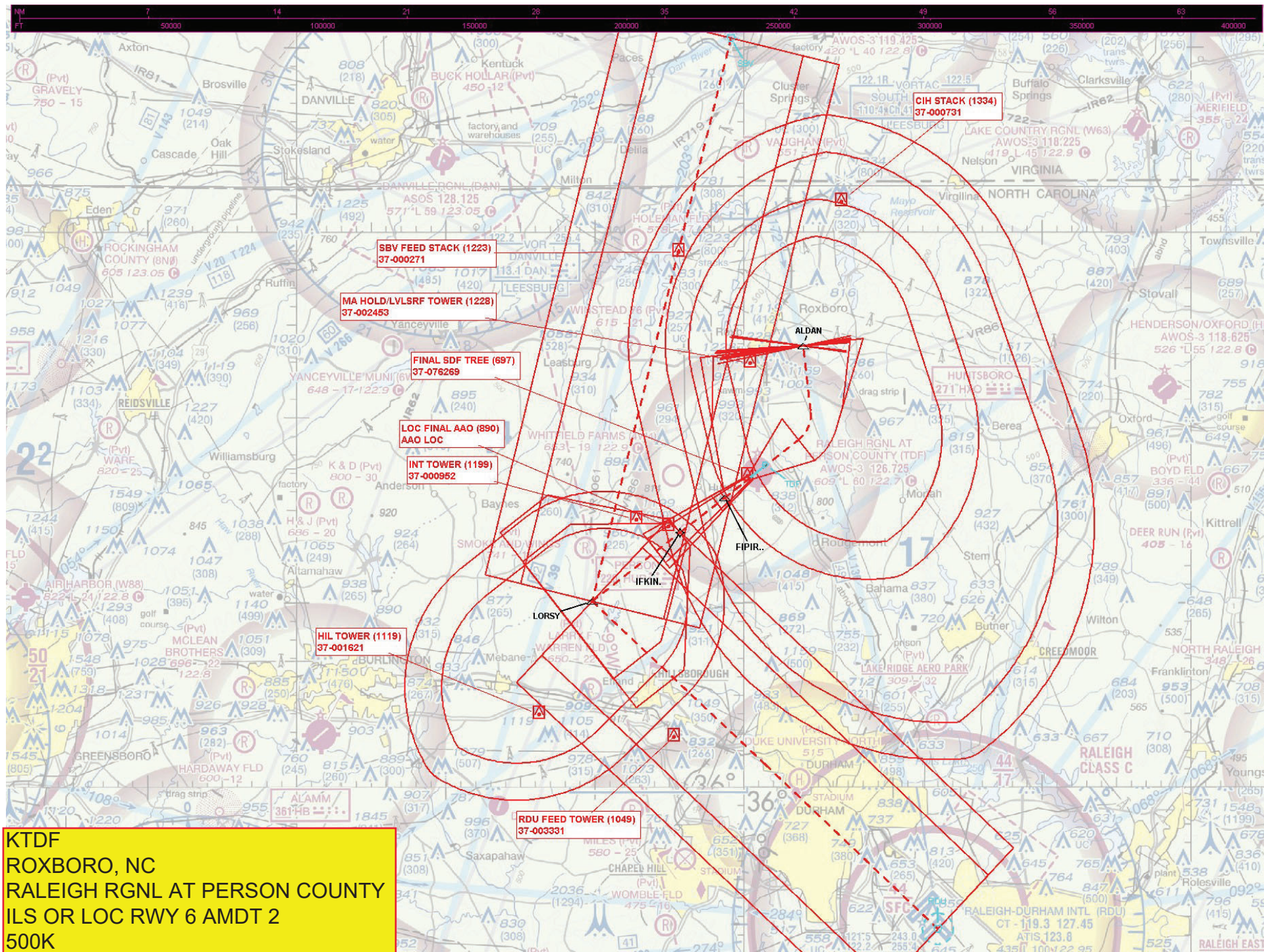
AWOS-3 <b>126.725</b>	RALEIGH APP CON <b>132.35 256.9</b>	GCO <b>119.7</b>	UNICOM <b>122.7 (CTAF)</b> <b>1</b>
--------------------------	--	---------------------	--



SE-2, 23 FEB 2023 to 23 MAR 2023

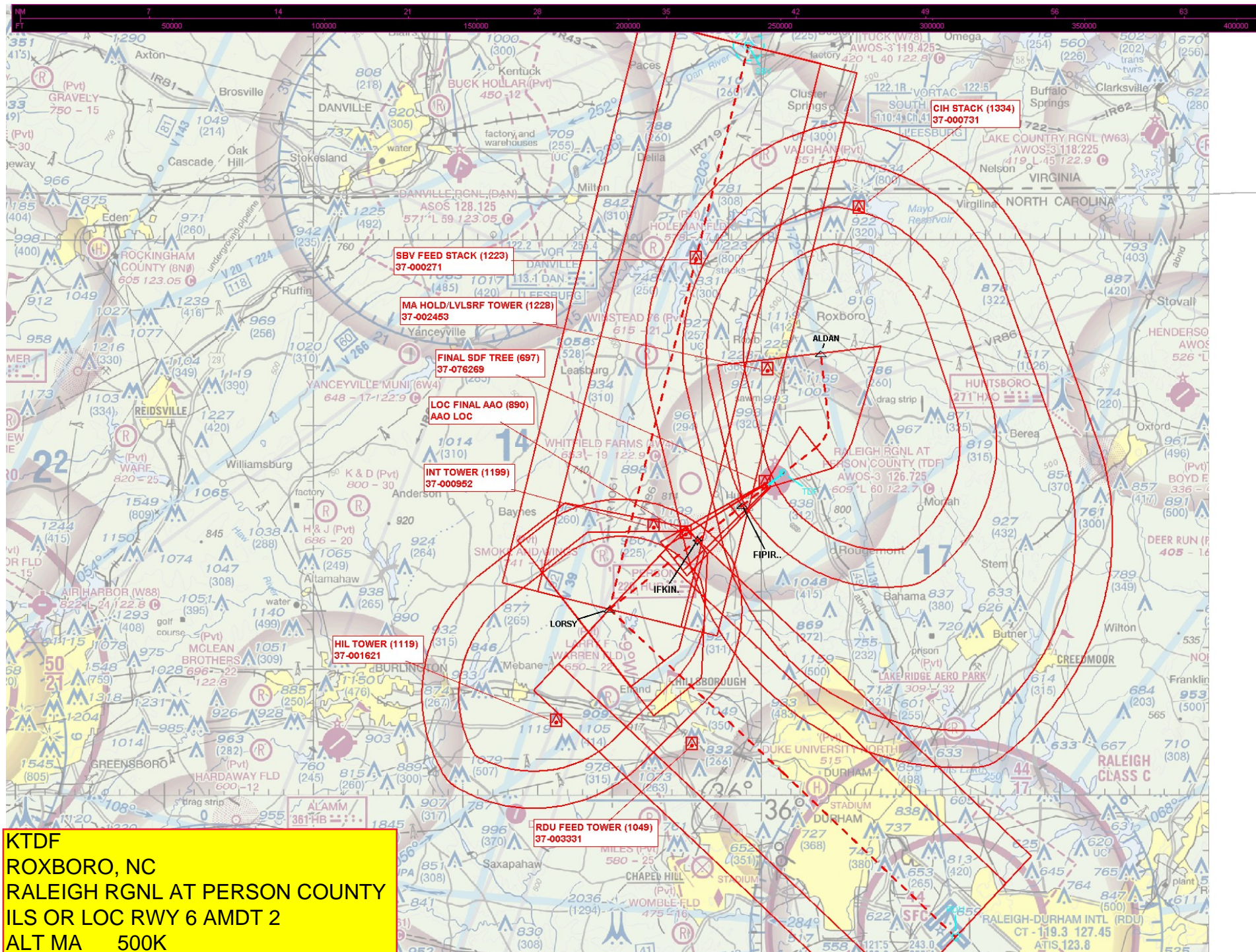
SE-2, 23 FEB 2023 to 23 MAR 2023



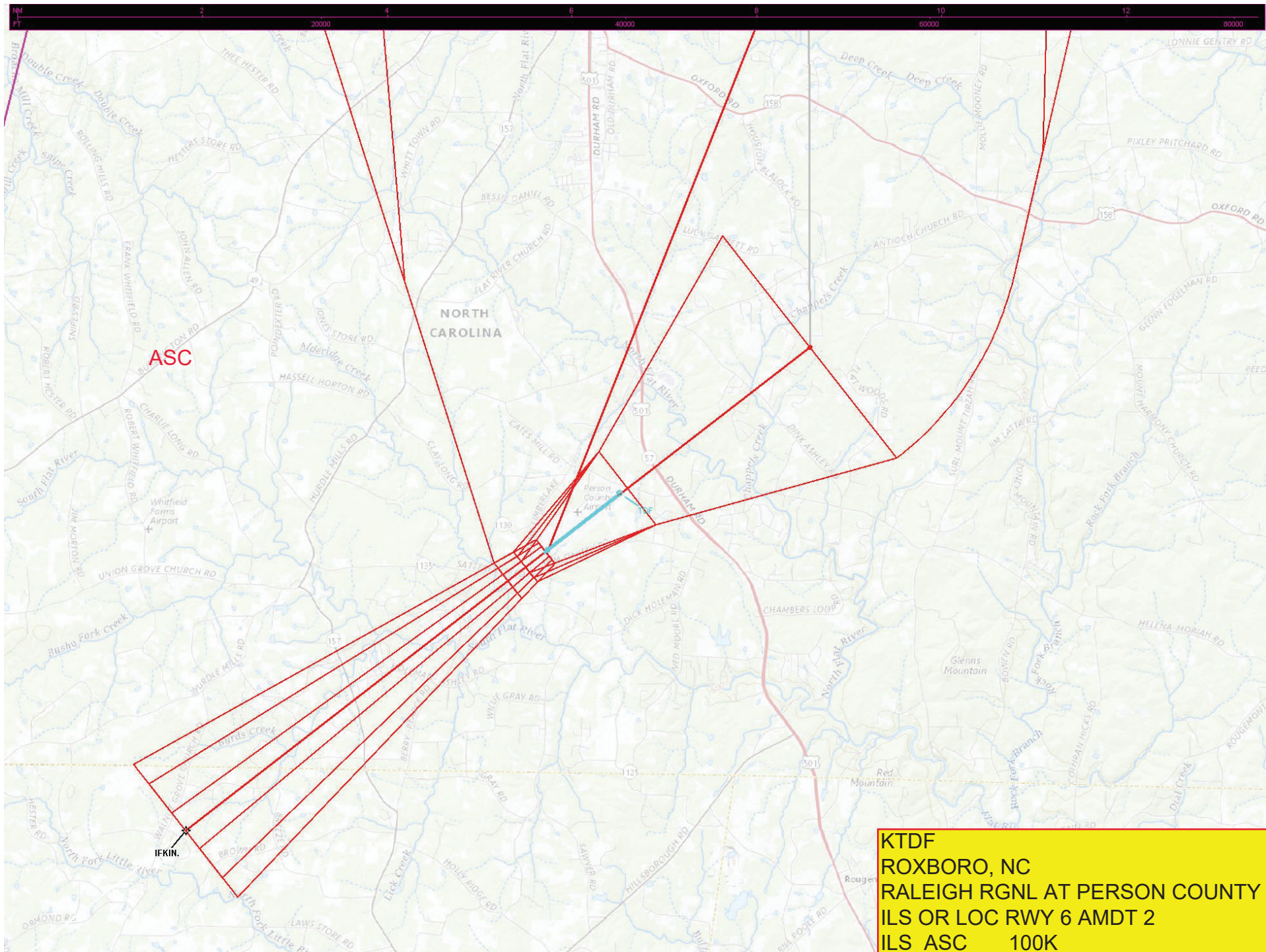


KTDF  
ROXBORO, NC  
RALEIGH RGNL AT PERSON COUNTY  
ILS OR LOC RWY 6 AMDT 2  
500K

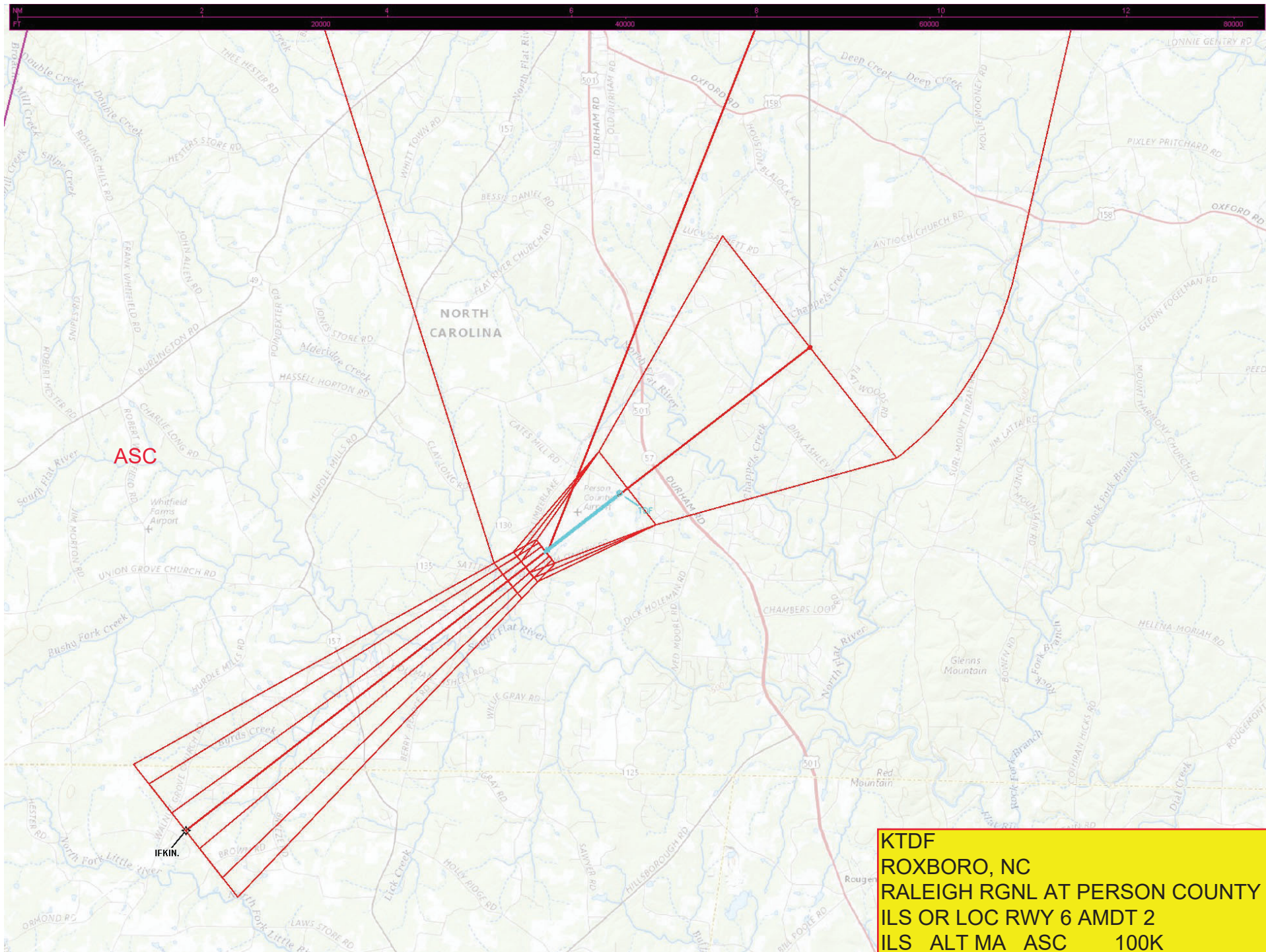












KTFD  
ROXBORO, NC  
RALEIGH RGNL AT PERSON COUNTY  
ILS OR LOC RWY 6 AMDT 2  
ILS ALT MA ASC 100K



