

Flight Procedures Cover Page	Task Action: Abbreviated Amendment	Task Type: IAP	Estimated Chart Date: 06/17/2021	APWS Task ID: EC5FE6751B8347A5ABBCADEC931AC7B	APWS Project ID: A2C66FD16E7747BAA0DA0672C8AC16C4
Procedure: LOC RWY 1R AMDT 4B		Enroute: NO	Specialist: Schones, Christopher		Agreement Number:
Airport ID: KTPA			Airport City: TAMPA		State: FL
Facility ID: TWJ	Facility Type: LOC	Flight Inspection Remark Type:			
<p><b>Procedure Comments:</b>          PROCESSED IAW AIRCRAFT OPERATIONS GROUP (AJF-10) MEMO, APRIL 29, 2020, SUBJECT:          FLIGHT INSPECTION REVIEW NOT REQUIRED</p> <p>THIS CANCELS NOTAM !FDC 0/9434 UPON PUBLICATION.</p> <p>CONTACT: DONANLD LANIER (405) 954-8242.</p> <p>4/12/2021: THIS IS A CORRECTED COPY OF THE FORM APPROVED ON: 3/8/2021          1. PROFILE LINE 4, ADDED "MUWTY INT/I-TWJ 14.33 DME 2600"</p>					



Flight Procedures Cover Page	Task Action: Abbreviated Amendment	Task Type: IAP	Estimated Chart Date: 06/17/2021	APWS Task ID: EC5FE6751B8347A5ABBCADEC931AC7B	APWS Project ID: A2C66FD16E7747BAA0DA0672C8AC16C4
Procedure: LOC RWY 1R AMDT 4B		Enroute: NO	Specialist: Schones, Christopher		Agreement Number:
Airport ID: KTPA			Airport City: TAMPA		State: FL
Facility ID: TWJ	Facility Type: LOC	Flight Inspection Remark Type:			
<div>Procedure Comments: PROCESSED IAW AIRCRAFT OPERATIONS GROUP (AJF-10) MEMO, APRIL 29, 2020, SUBJECT: FLIGHT INSPECTION REVIEW NOT REQUIRED</div> <div>THIS CANCELS NOTAM !FDC 0/9434 UPON PUBLICATION.</div> <div>CONTACT: DONANLD LANIER (405) 954-8242</div>					

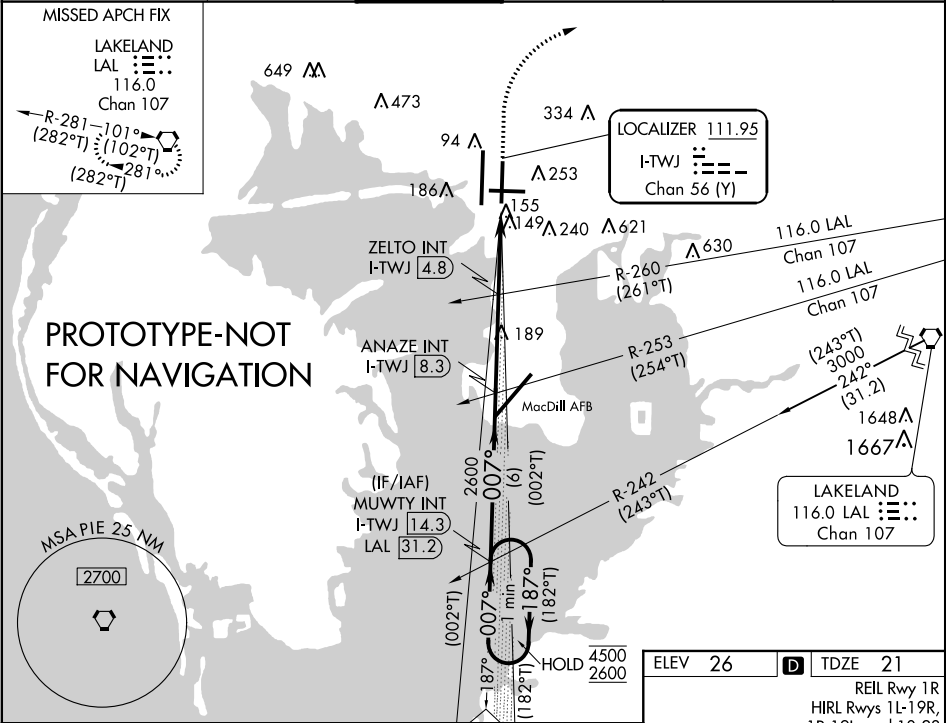
QUALITY  
SN 3/4/21 6  
CHECKED






QUALITY  
41  
CHECKED

LOC/DME I-TWJ <b>111.95</b> Chan <b>56</b> (Y)	APP CRS <b>007°</b>	Rwy Idg TDZE Apt Elev <b>8300</b> <b>21</b> <b>26</b>
--	------------------------	--

LOC RWY 1R  
TAMPA INTL (TPA)

ARR <b>126.45</b> D-ATIS <b>128.475</b> DEP		TAMPA APP CON <b>118.5 307.175</b>	TAMPA TOWER <b>119.5 269.4</b>	GND CON <b>121.7 269.4</b>	CLNC DEL <b>133.6</b>	CPDLC
---	--	------------------------------------	--------------------------------	----------------------------	-----------------------	-------



One Minute Holding Pattern		MUWTY INT I-TWJ [14.3]	ANAZE INT I-TWJ [8.3]		500 	2000 	LAL 
(182°T)		(002°T)					
4500 ← 187°		007° →	2600		ZELTO INT I-TWJ [4.8]	I-TWJ [2.7]	I-TWJ [1.5]
(002°T)					1300		
VGSI and descent angles not coincident (VGSI Angle 3.00/TCH 71).			3.50° TCH 55				
		6 NM		3.5 NM	2.1 NM	1.2 NM	
CATEGORY	A		B		C		D
S-1R	1300-1¼ 1279 (1300-1¼)		1300-1½ 1279 (1300-1½)		1300-3		1279 (1300-3)
 CIRCLING	1300-1¼ 1274 (1300-1¼)		1300-1½ 1274 (1300-1½)		1300-3		1274 (1300-3)
ZELTO FIX MINIMUMS (DUAL VOR RECEIVERS OR DME REQUIRED)							
S-1R	460-1		439 (500-1)		460-1⅞		439 (500-1⅞)
 CIRCLING	560-1		534 (600-1)		680-1¾ 654 (700-1¾)		980-3 954 (1000-3)

