

Flight Procedures Cover Page	Task Action: FLIGHT CHECK	Task Type: IAP	Estimated Chart Date: 10/02/2025	APWS Task ID: EC0F20B61EB84B27AACF9055B4E71B3C	APWS Project ID: 3544DF1CEA874300B7F82A2AA21E4D92
Procedure: RNAV (GPS) RWY 3 AMDT 2		Enroute: NO	Specialist: Purnell, Troy		Agreement Number:
Airport ID: KAKH			Airport City: GASTONIA		State: NC
Facility ID:	Facility Type:	Flight Inspection Remark Type: New FC Slot			
<div>Procedure Comments: ADDED TAA, REDESIGN MISSED APPROACH AND REMOVED LPV MINIMUMS. FDC NOTAM 5/2212 AND 5/2211 ISSUED BASED ON VGS PENETRATIONS. CONTACT ROBERT G. HAMILTON, AJV-A33 405-954-4608</div> <div>QUALITY 6 SN 4/22/25 CHECKED QUALITY 38 CHECKED</div>					

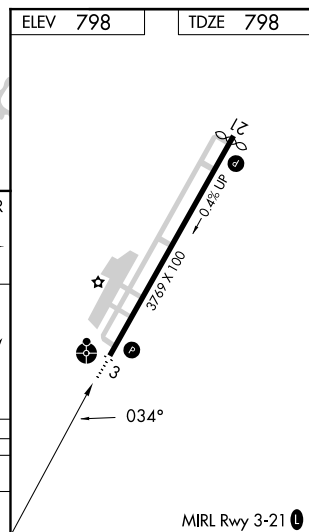
RNAV (GPS) RWY 3

GASTONIA MUNI (AKH)

MISSED APPROACH: Climbing left turn to 3000 direct SIDAR and hold.

UNICOM
123.0 (CTAF) **L**

PROTOTYPE-NOT
FOR NAVIGATION



CATEGORY	A	B	C	D
LP MDA	1240-1	442 (500-1)	1240-1 $\frac{1}{8}$ 442 (500-1 $\frac{1}{8}$)	NA
LNAV MDA	1280-1	482 (500-1)	1280-1 $\frac{1}{4}$ 482 (500-1 $\frac{1}{4}$)	NA

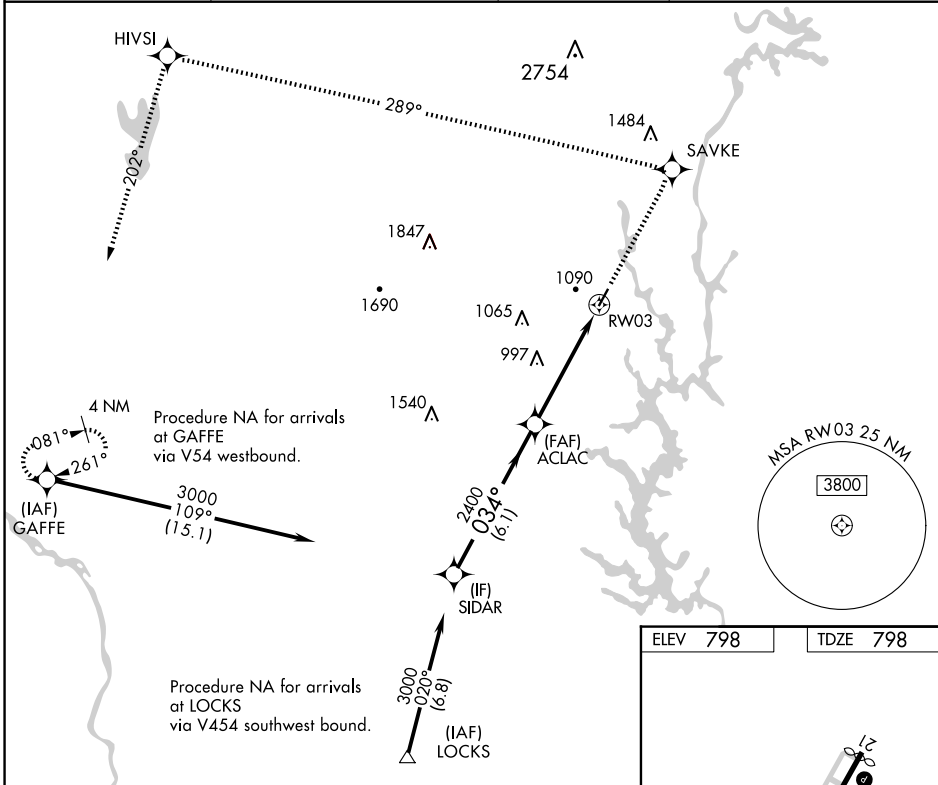
WAAS CH 90302 W03A	APP CRS 034°	Rwy Idg TDZE Apt Elev	3769 798 798
--	------------------------	-----------------------------	---



RNAV (GPS) RWY 3
GASTONIA MUNI (AKH)

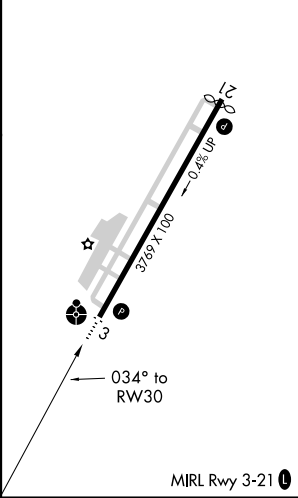
RNP APCH. ▼ If local altimeter setting not received, use Charlotte Douglas Intl altimeter setting and increase all DAs/MDAs 40 feet. Inoperative table does not apply.	ODALS ● ⋮	MISSED APPROACH: Climb to 3200 direct SAVKE and via 289° track to HIVSI and 202° track to GAFFE and hold.
---	--------------	---

ASOS 135.725	CHARLOTTE APP CON 120.05 257.2	CLNC DEL 127.2	UNICOM 123.0 (CTAF) 0
------------------------	--	--------------------------	---------------------------------



ELEV 798	TDZE 798
----------	----------

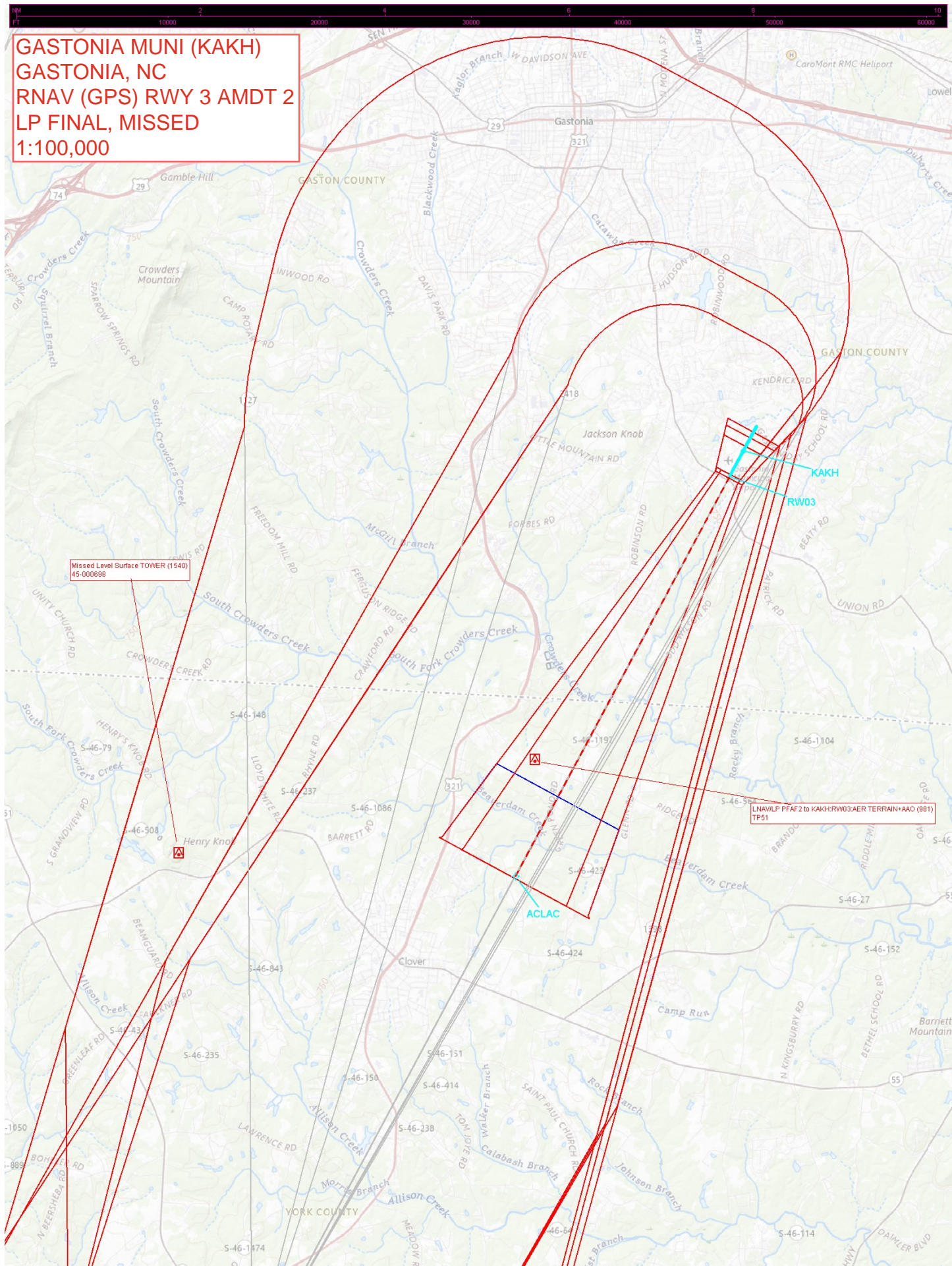
VGSI and RNAV glidepath not coincident (VGSI Angle 3.00/TCH 26).				3200	SAVKE	HIVSI	GAFFE
Procedure Turn NA				↑	tr 289°	tr 202°	
GP 3.00° TCH 40				3000	034°	2400	RW03
				6.1 NM	4.8 NM		
CATEGORY	A	B	C	D			
LPV DA	1118-1¼	320 (400-1¼)		NA			
LNAV MDA	1440-1	642 (700-1)	1440-1¾	642 (700-1¾)			

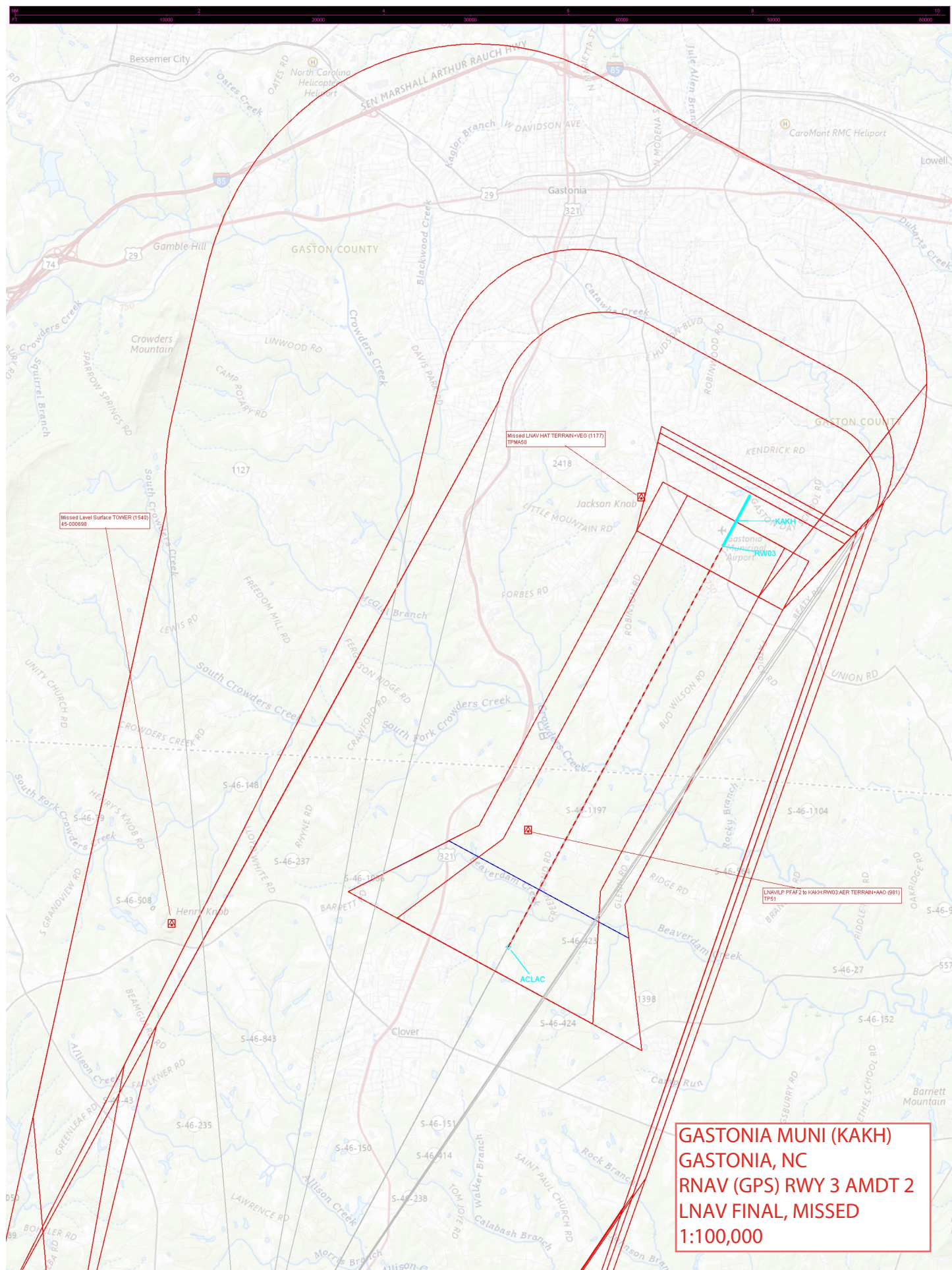


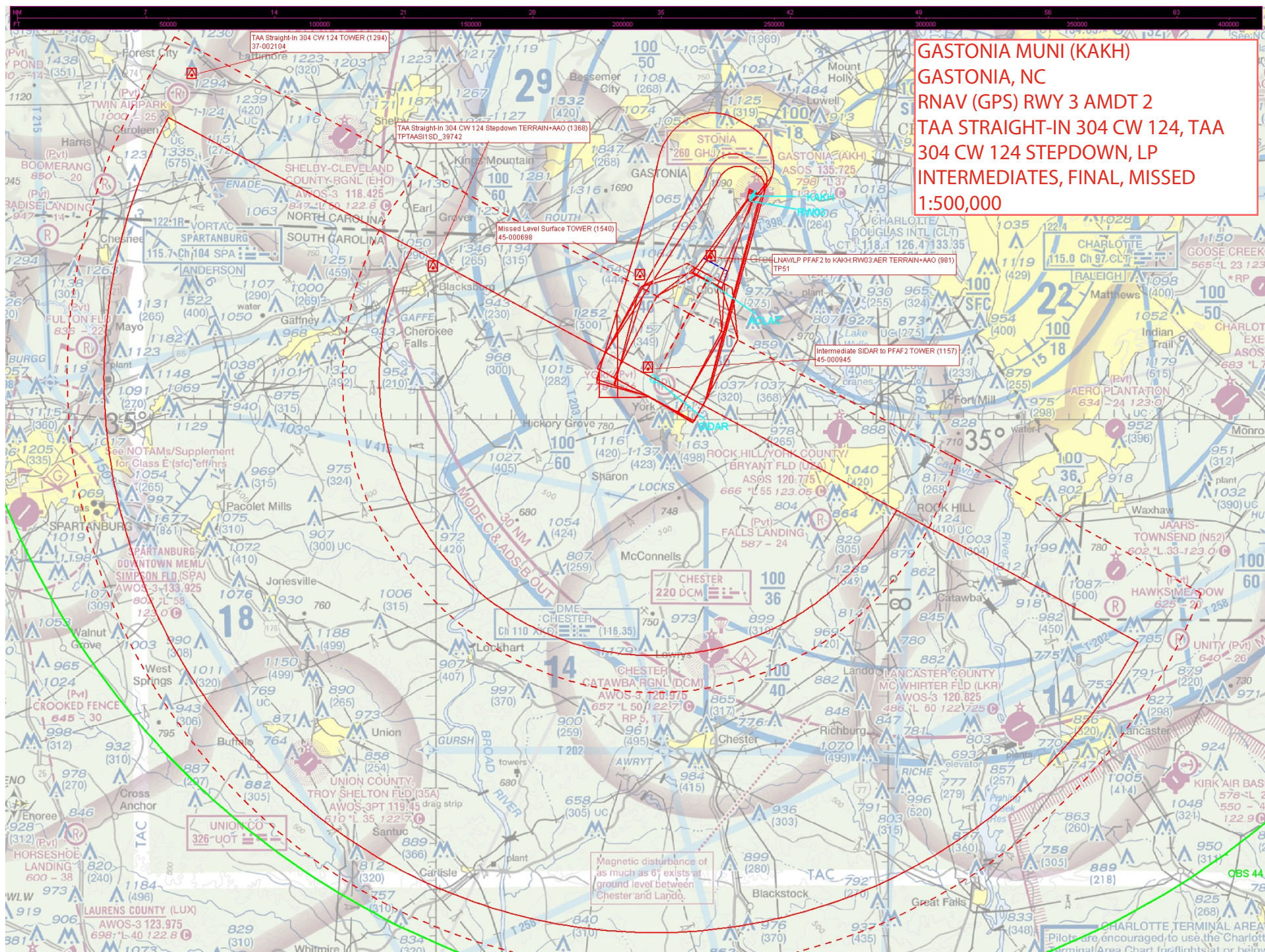
SE-2, 20 FEB 2025 to 20 MAR 2025

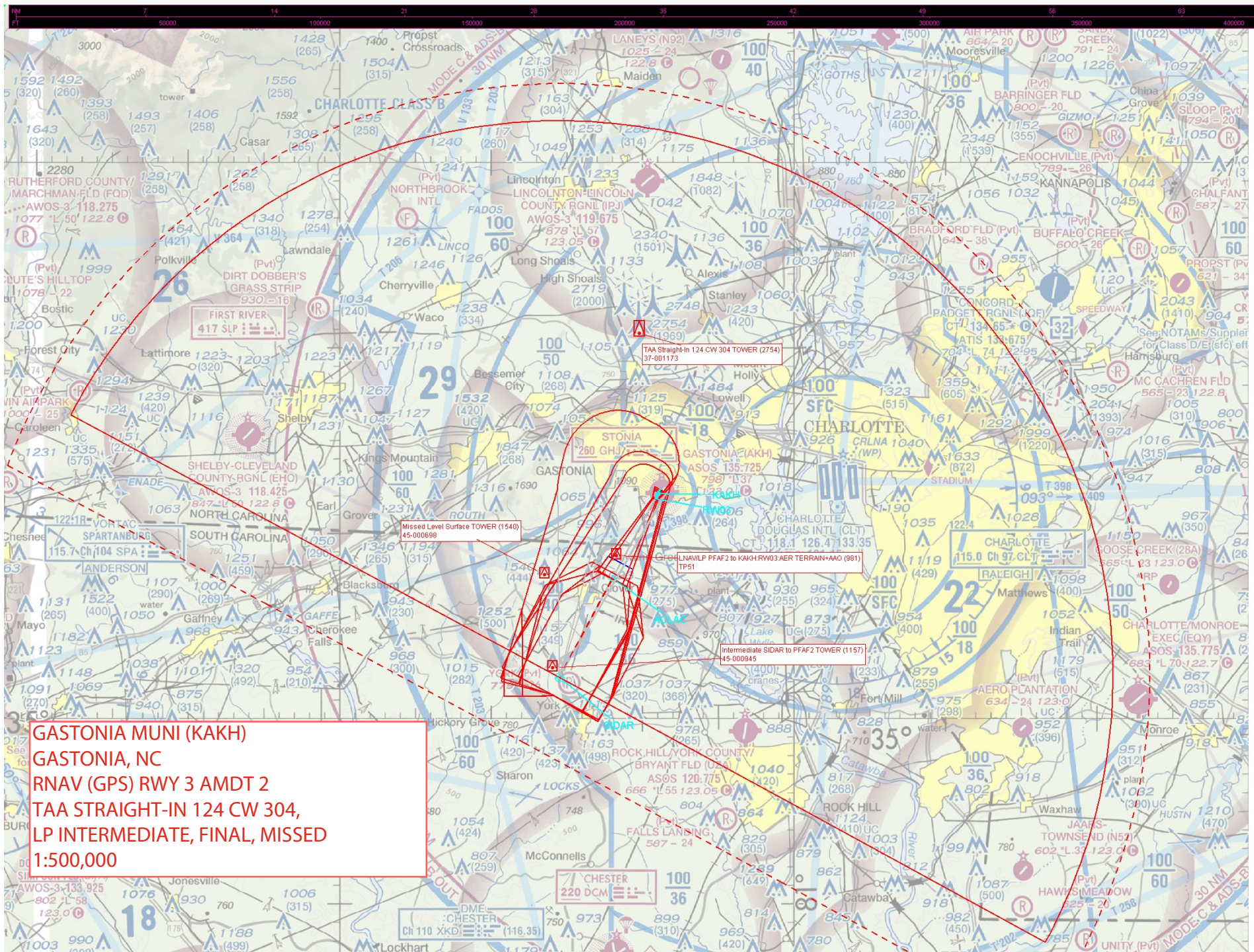
SE-2, 20 FEB 2025 to 20 MAR 2025

**GASTONIA MUNI (KAKH)
GASTONIA, NC
RNAV (GPS) RWY 3 AMDT 2
LP FINAL, MISSED
1:100,000**









GASTONIA MUNI (KAKH)
GASTONIA, NC
RNAV (GPS) RWY 3 AMDT 2
LNAV FINAL, MISSED, MISSED HOLDING, HILPT
1:500,000

