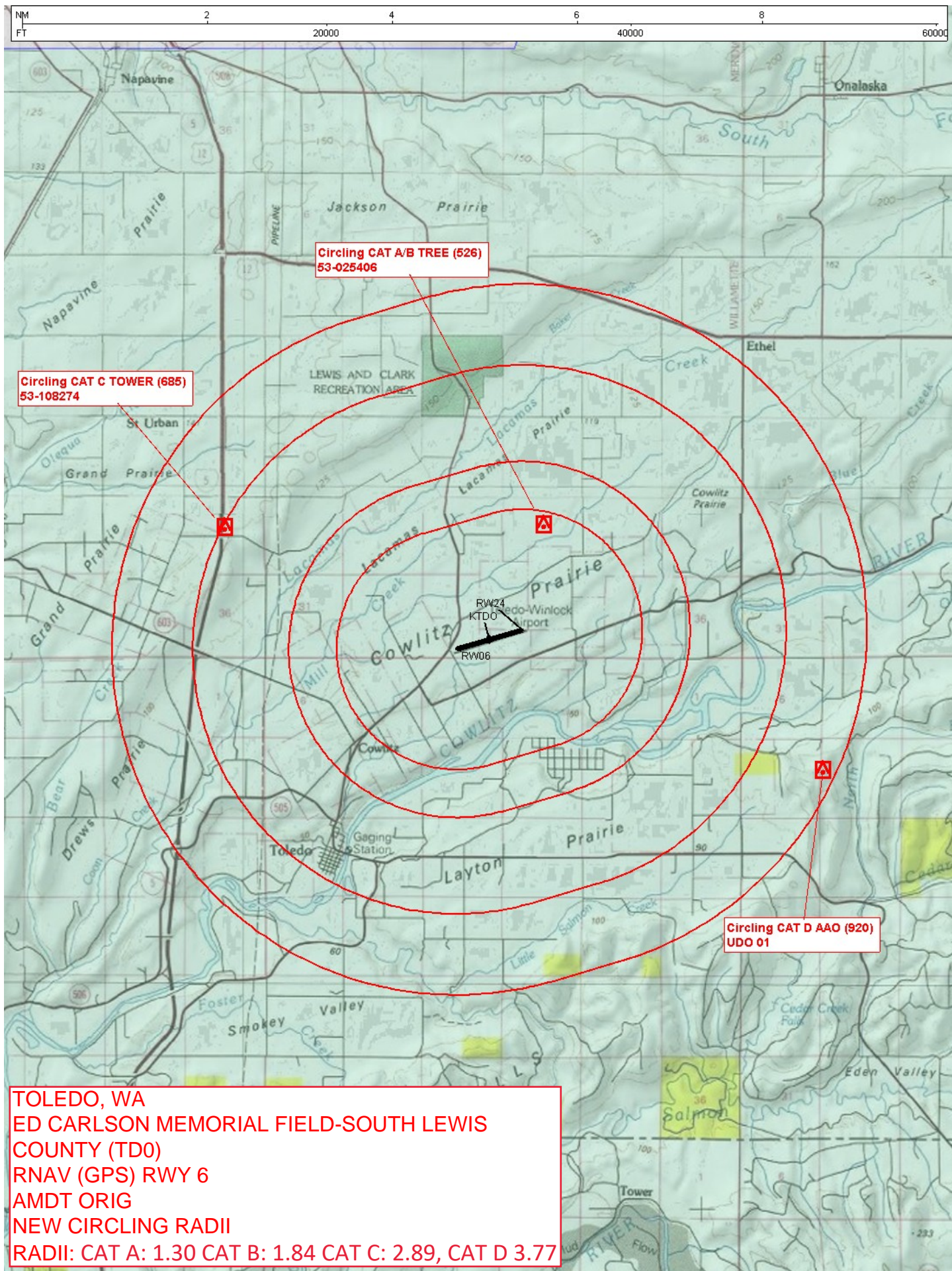


Flight Procedures Cover Page	Task Action: P-NOTAM	Task Type: IAP	Estimated Chart Date: 03/24/2022	APWS Task ID: EBA2E7152441443F89EEA093504FBB79	APWS Project ID: 5607F92583764199A2A9BB6A519B1A52
Procedure: RNAV (GPS) RWY 6 AMDT 0A		Enroute: NO	Specialist: Marsh, Andre		Agreement Number:
Airport ID: KTDO			Airport City: TOLEDO		State: WA
Facility ID:	Facility Type:	Flight Inspection Remark Type:			
<div>Procedure Comments: P-NOTAM CIRCLING RADII INCREASE JASON KRETSCHMER: 405-954-4019</div> <div>Digitally signed by <b>JASON KRETSCHMER</b> Feb 04, 2022</div> <div>QUALITY 47 CHECKED</div>					



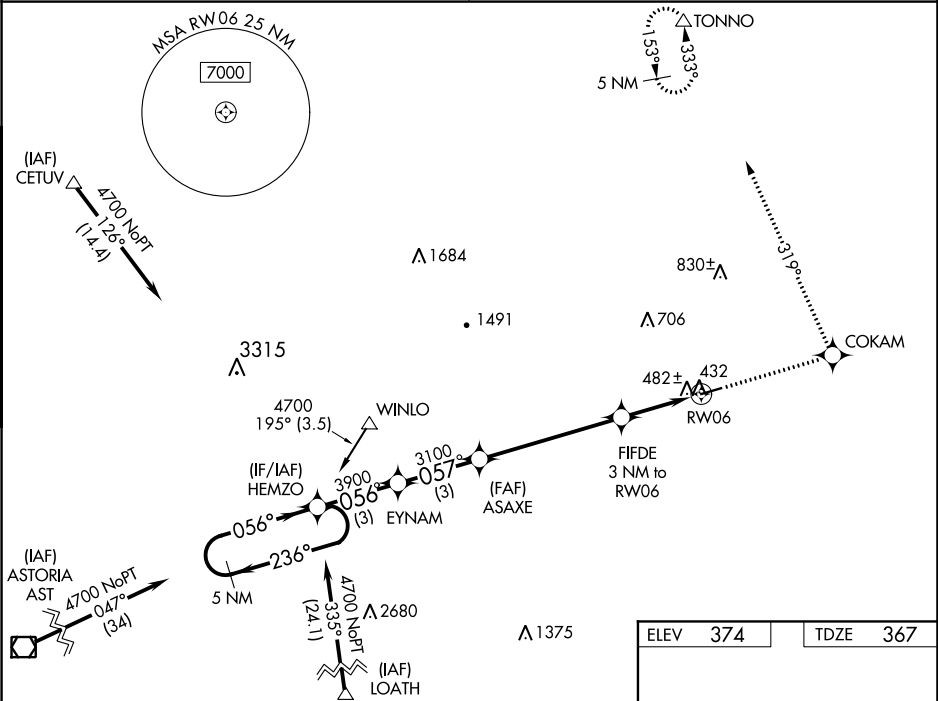
NA

Circling NA at night. Baro-VNAV NA. DME/DME RNP-0.3 NA. Visibility reduction by helicopters NA. Use Chehalis altimeter setting, when not received use Kelso altimeter setting and increase all DA/MDA 40 feet and increase LNAV/VNAV visibility all Cats ¼ mile.

MISSED APPROACH: Climb to 5000 direct COKAM and left turn on track 319° to TONNO and hold, continue climb-in-hold to 5000.

SEATTLE CENTER  
**124.2 317.6**

CTAF  
**122.9**



VGSI and RNAV glidepath not coincident (VGSI Angle 3.00/TCH 43).		5000	COKAM	TONNO
5 NM Holding Pattern		ASAXE	fr 319°	
4700 ← 236° → 056° → 056° → 056° → 3900 → 057° → 3100 → 1360 → RW06		*LNAV only		
GP 3.00° TCH 50		FIFDE 3 NM to RW06		
CATEGORY	A	B	C	D
LPV DA	767-1½		400 (400-1½)	
LNAV/VNAV DA	813-1½		446 (500-1½)	
LNAV MDA	800-1	433 (500-1)	800-1¼ 433 (500-1¼)	800-1½ 433 (500-1½)
CIRCLING	900-1	526 (600-1)	900-1½ 526 (600-1½)	940-2 566 (600-2)