

Flight Procedures Cover Page	Task Action: FLIGHT CHECK	Task Type: IAP	Estimated Chart Date: 06/12/2025	APWS Task ID: EB8D70DA77FE4640B039A6E6830DF0BF	APWS Project ID: 3A86C31F54404734BC3E786F6C9AFCA1
Procedure: ILS OR LOC RWY 4R AMDT 31		Enroute: NO	Specialist: Blanco, Joseph		Agreement Number:
Airport ID: KJFK			Airport City: NEW YORK		State: NY
Facility ID:	Facility Type:	Flight Inspection Remark Type: New FC Slot			
<div>Procedure Comments: ACTIVE AIRPORT DATA USED REASON FOR PROJECT: AMEND MISSED APPROACH TO TURN SE. FAA FORM 8260-1: NONSTANDARD IFP TO APPLY LPV MISSED CRITERIA TO AN ILS CAT II/III. CONTACT CASIMIR TABAKA 405-954-7931</div> <div>SNIPY FIX 8260-2 02/6/2025: THIS IS AN UPDATED COPY OF THE FORM DEVELOPED ON 06/12/2025. HOLDING PAT 2: CHANGED RAD/COURSE/BRG FROM 298.47 TO 118.47.</div> <div>QUALITY 16 CHECKED</div> <div>QUALITY 38 CHECKED</div> <div>QUALITY 34 CHECKED</div>					

1. FLIGHT PROCEDURE IDENTIFICATION:

ILS OR LOC RWY 4R (CAT I, CAT II and CAT III)
John F. Kennedy INTL (KJFK)
New York, New York

2. WAIVER REQUIRED AND APPLICABLE STANDARD:

FAAO 8260.3F, 10-3-1, the LPV missed criteria may be used in a CAT I ILS missed approach.
FAAO 8400.13F, 8400.13 F, Chapter 4 para 5F and chapter 7 para 5F. MAS, the MAS must meet the current CAT II/III development standard.

3. REASON FOR WAIVER (JUSTIFICATION FOR NONSTANDARD TREATMENT):

This Alternate RNAV missed approach is needed to allow deconfliction between RWY 4L/4R missed approaches and departures off runway 4 L/R which will give ATC divergence. These RNAV legs provide the needed positive course guidance and allow this missed approach to mirror the primary missed in the event that JFK VOR/DME is out of service; Deer Park VOR would not provide positive course guidance with the same separation requirements with departures off RWY 4L/R and would not allow for positive course guidance with 10 NM. Currently Colt Neck (COL), Canarsie (CRI), Teterboro (TEB) and La Guardia (LGA) are all scheduled to be decommissioned under the VORMON program.

4. EQUIVALENT LEVEL OF SAFETY PROVIDED:

1. Only requires a climb to an altitude and then a direct turn to the holding fix.
2. Aircraft will climb straight ahead to 520 MSL (field elevation 13' MSL) before first turn.
3. This procedure will be briefed multiple times to Industry at the Delayed Initiative Meetings (DIM) which are held every 2 months which all airlines are invited along with NBAA and AOPA. Not only are these briefed, and PowerPoint's are provided to everyone on the mailing list in case they are not able to attend.
4. Combined 8260.58, LPV missed approach criteria with ILS CAT II/III criteria 8260.3F, Para 10-5.
5. Radar is required which will allow for ATC to monitor the missed approach.
6. GPS MA section 1 encompassed in CAT II conventional containment area.

5. ALTERNATIVE ACTIONS DEEMED NOT FEASIBLE:

The use of DRP VOR/DME was considered but did not provide the separation needed between JFK DP and allow for positive course guidance within 10 NM. The following VORs in this geographical area are approved for VORMON decommissioning: TEB; LGA; CRI; BWZ; COL and as a result course guidance based off these was also deemed not feasible.

6. COORDINATION WITH USER ORGANIZATIONS (SPECIFY):

N90 and JFK TWR

7. SUBMITTED BY:

DATE	OFFICE IDENTIFICATION	TITLE
10/23/24	JV-A430	MANAGER

Digitally signed by
CASIMIR L TABAKA
Jan 30, 2025

SIGNATURE

8. AFS ACTIONS:

☐ APPROVED ☐ DISAPPROVED ☐ NOT REQUIRED

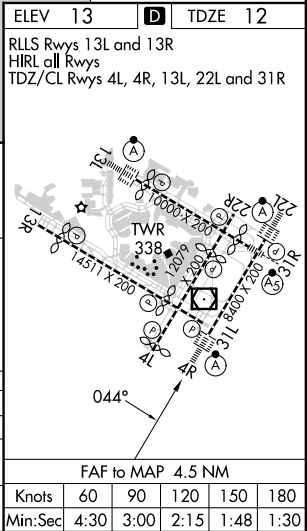
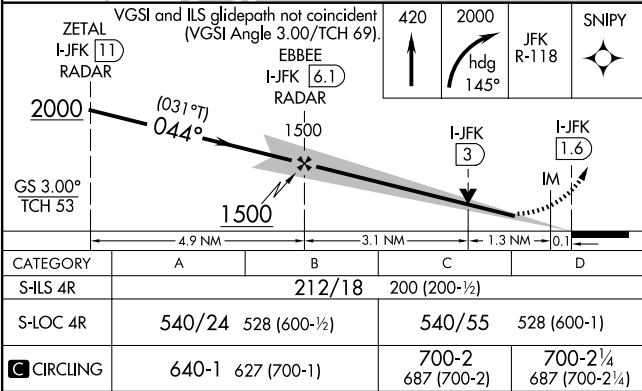
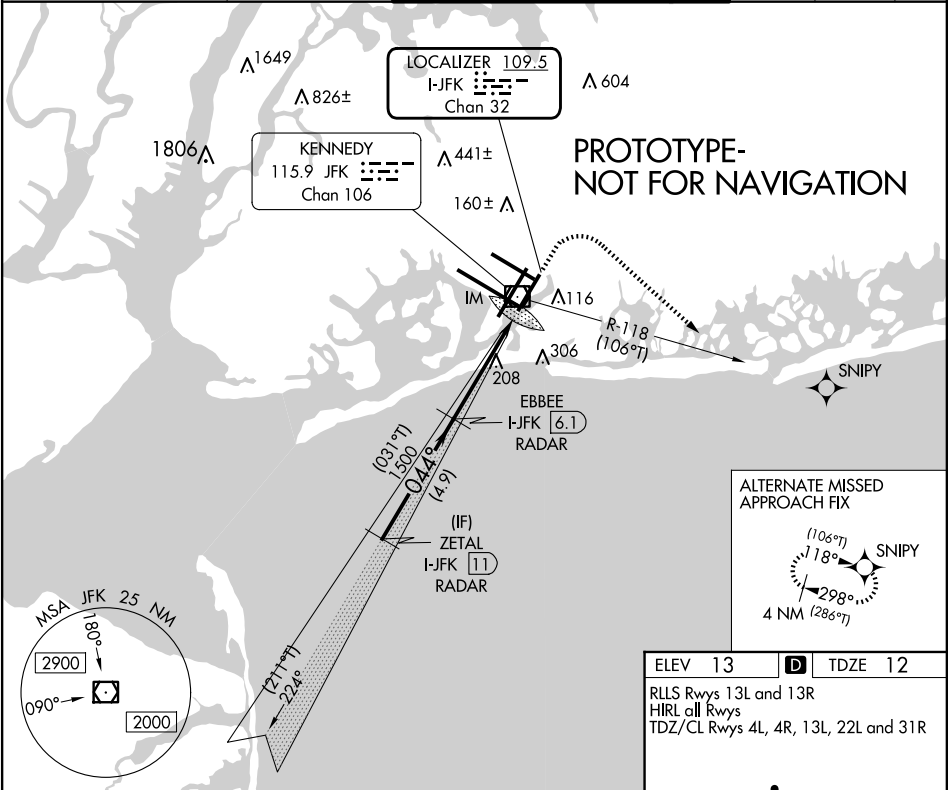
COMMENTS:

DATE	ROUTING SYMBOL	SIGNATURE
------	----------------	-----------

LOC/DME I-JFK	APP CRS	Rwy Idg	8400
109.5	044°	TDZE	12
Chan 32		Apt Elev	13

ILS or LOC RWY 4R
JOHN F KENNEDY INTL (JFK)

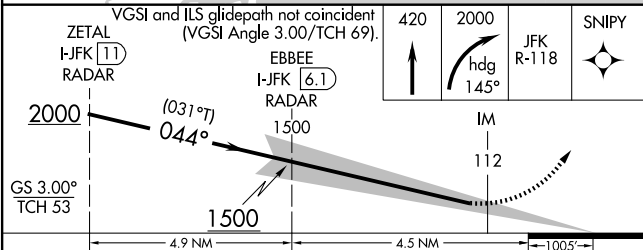
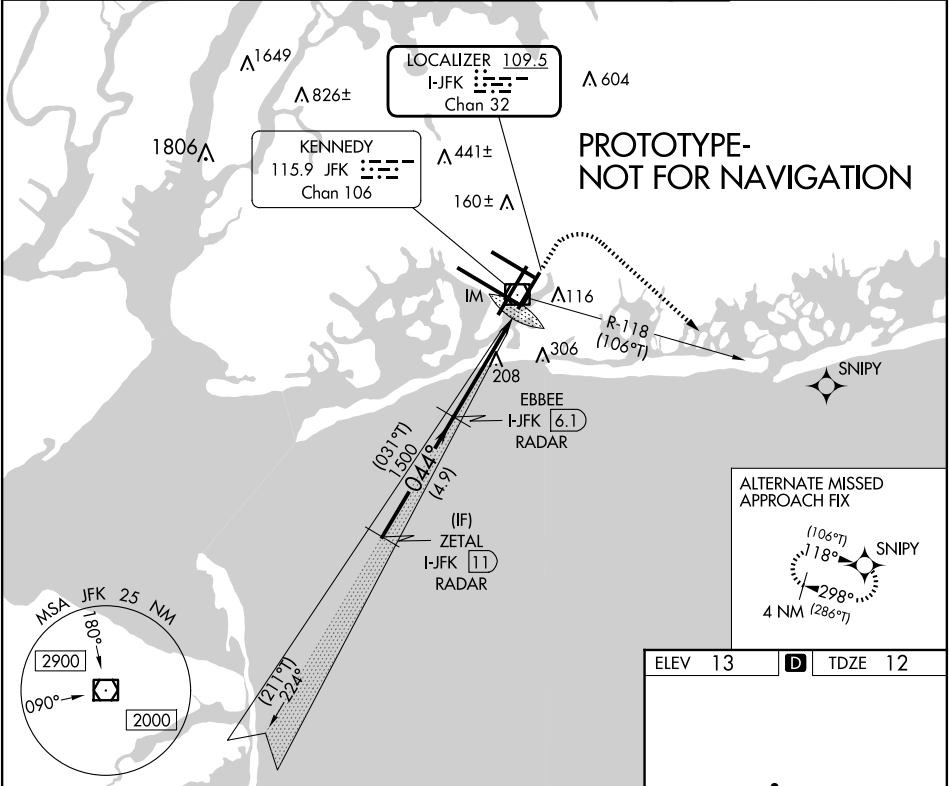
RADAR required for procedure entry.			ALSIF-2	MISSED APPROACH: Climb to 420 then climbing right turn to 2000 on heading 145° and JFK VOR/DME R-118 to SNIPY and hold.	
Simultaneous approach authorized.					
D-ATIS (ARR/DEP) (ARR-NE) (ARR-SW)	NEW YORK APP CON	KENNEDY TOWER		GND CON	CLNC DEL
128.725 117.7 115.4	128.125 269.0	Rwys 4R/22L and 13L/31R 119.1 281.55		121.9	135.05
		Rwys 4L/22R and 13R/31L 123.9 281.55		348.6	348.6
				CPDLC	



LOC/DME I-JFK	APP CRS	Rwy Idg	8400
109.5	044°	TDZE	12
Chan 32		Apt Elev	13

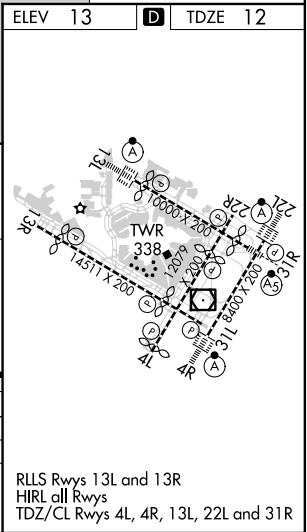
ILS RWY 4R (CAT II & III)
JOHN F KENNEDY INTL (JFK)

RADAR required for procedure entry.				ALSIF-2	MISSED APPROACH: Climb to 420 then climbing right turn to 2000 on heading 145° and JFK VOR/DME R-118 to SNIPY and hold.			
Simultaneous approach authorized.								
D-ATIS (ARR/DEP) (ARR-NE) (ARR-SW)	NEW YORK APP CON		KENNEDY TOWER		GND CON	CLNC DEL	CPDLC	
128.725 117.7 115.4	128.125 269.0		Rwys 4R/22L and 13L/31R 119.1 281.55 Rwys 4L/22R and 13R/31L 123.9 281.55		121.9 348.6	135.05 348.6		



CATEGORY	A	B	C	D
S-ILS 4R	CAT II RA 112/12 100 DA 112			
S-ILS 4R	CAT III RVR 06			

CATEGORY II & III ILS - SPECIAL AIRCREW
& AIRCRAFT CERTIFICATION REQUIRED



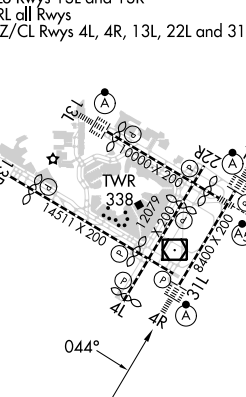
ILS or LOC RWY 4R
JOHN F KENNEDY INTL (JFK)

MISSED APPROACH: Climb to 800 then climbing right turn to 4000 heading 099° and V44 to DPK VOR/DME and hold.

T Simultaneous approach authorized.

NE-2, 03 OCT 2024 to 31 OCT 2024

NE-2, 03 OCT 2024 to 31 OCT 2024

ELEV 13	D	TDZE 12			
RLLS Rwy's 13L and 13R HIRL all Rwy's TDZ/CL Rwy's 4L, 4R, 13L, 22L and 31R					
					
FAF to MAP 4.5 NM					
Knots	60	90	120	150	180
Min:Sec	4:30	3:00	2:15	1:48	1:30

LOC/DME I-JFK	APP CRS	Rwy Idg	8400
109.5	044°	TDZE	12
Chan 32		Apt Elev	13

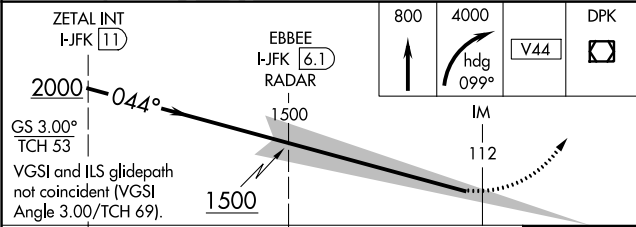
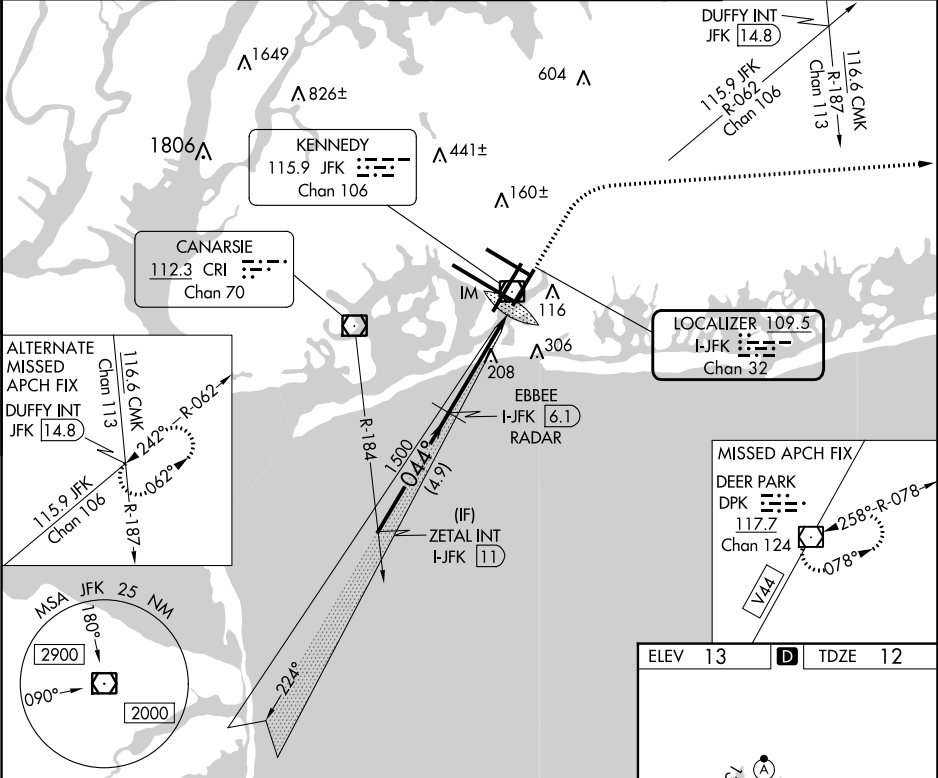
OLD

ILS RWY 4R (CAT II & III)

JOHN F KENNEDY INTL (JFK)

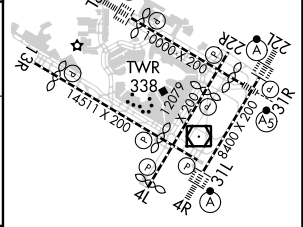
RADAR required for procedure entry.		ALSF-2	MISSED APPROACH: Climb to 800 then climbing right turn to 4000 heading 099° and V44 to DPK VOR/DME and hold.
Simultaneous approach authorized.			

D-ATIS (ARR/DEP) (ARR-NE) (ARR-SW)	NEW YORK APP CON	KENNEDY TOWER Rwys 4R/22L and 13L/31R	GND CON	CLNC DEL	CPDLC
128.725 117.7 115.4	128.125 269.0	119.1 281.55	121.9	135.05	
		Rwys 4L/22R and 13R/31L	123.9	348.6	

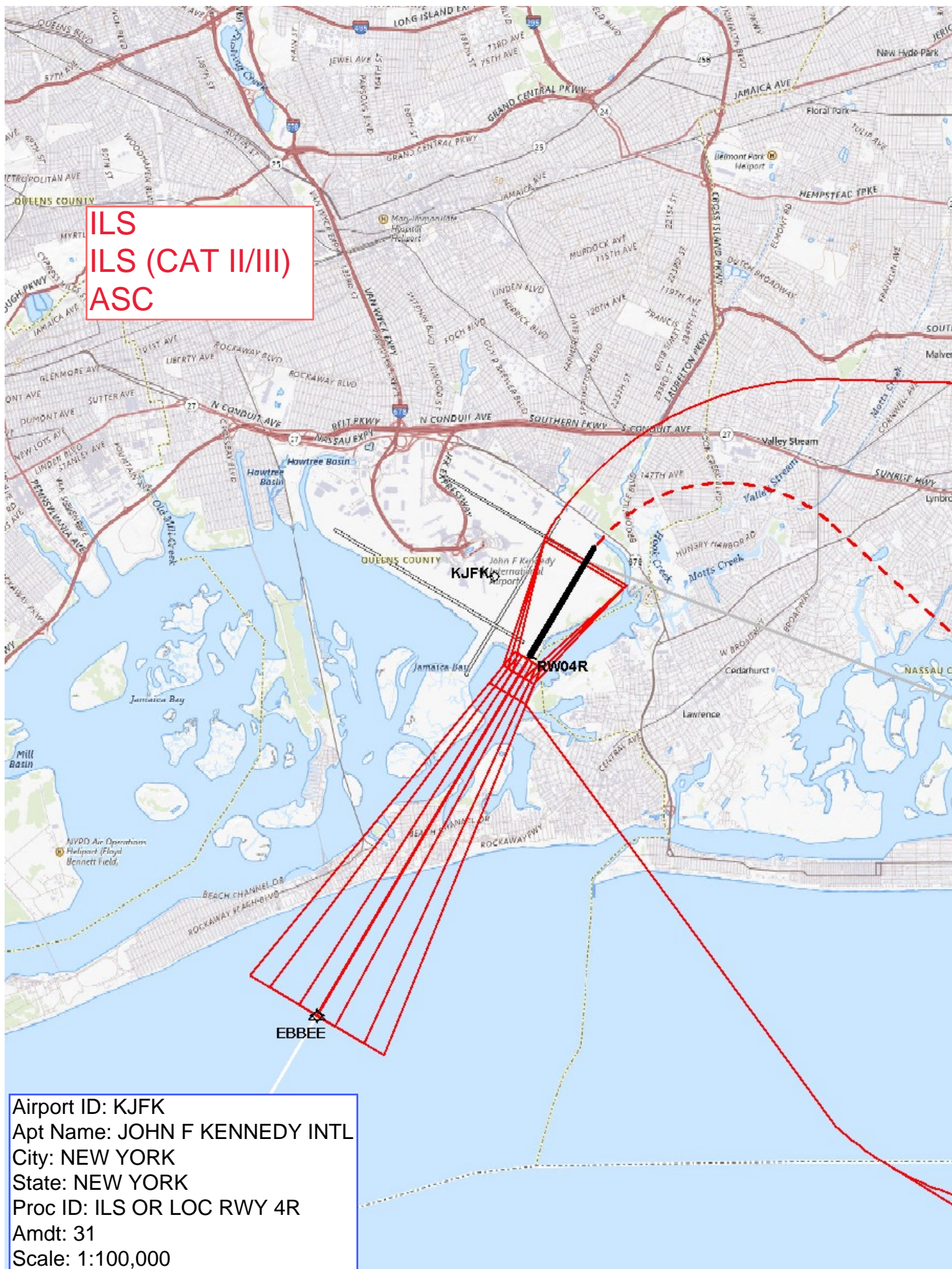


CATEGORY	A	B	C	D
S-ILS 4R	CAT II RA 112/12 100 DA 112			
S-ILS 4R	CAT III RVR 06			

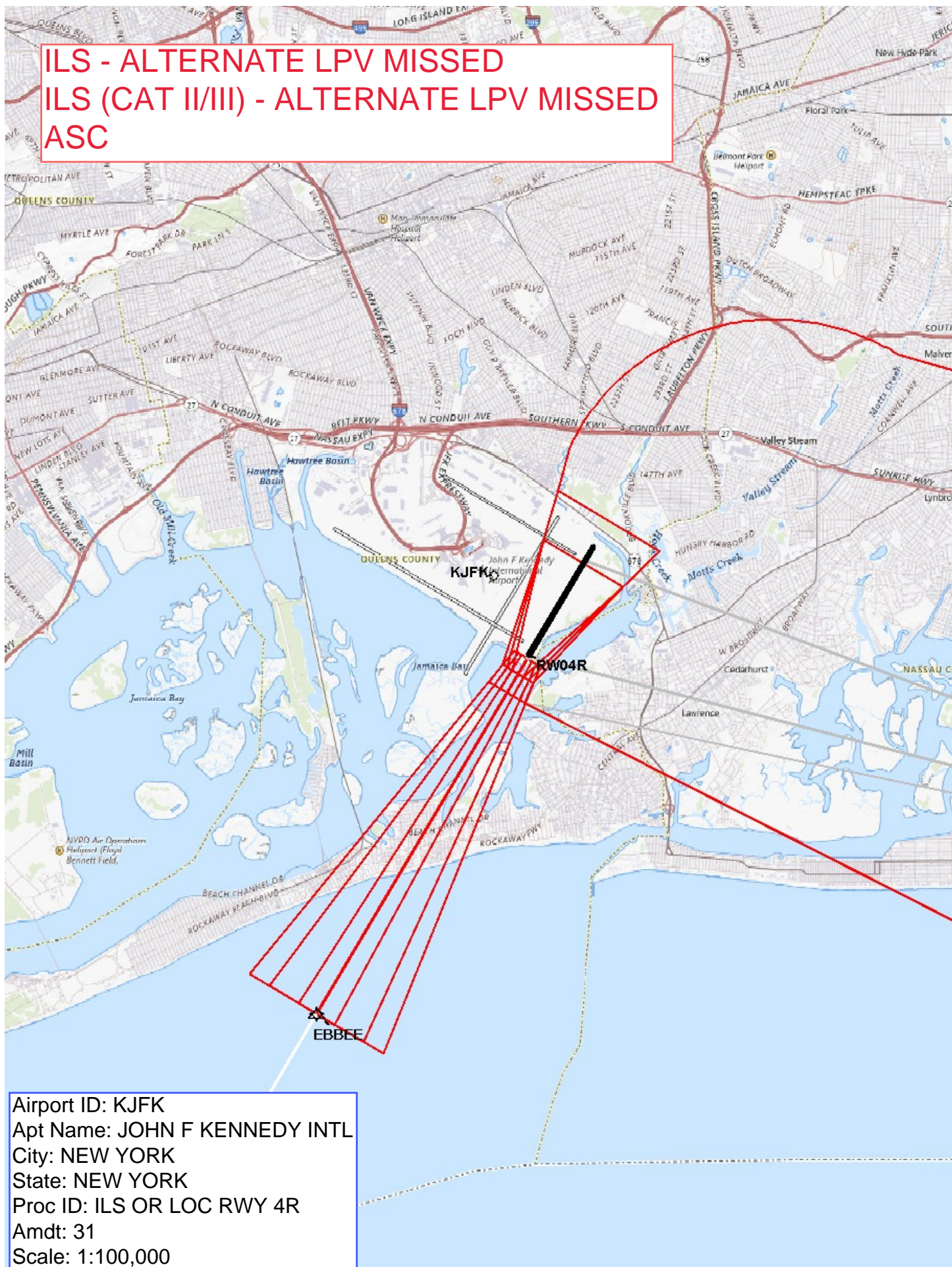
CATEGORY II & III ILS - SPECIAL AIRCREW
& AIRCRAFT CERTIFICATION REQUIRED



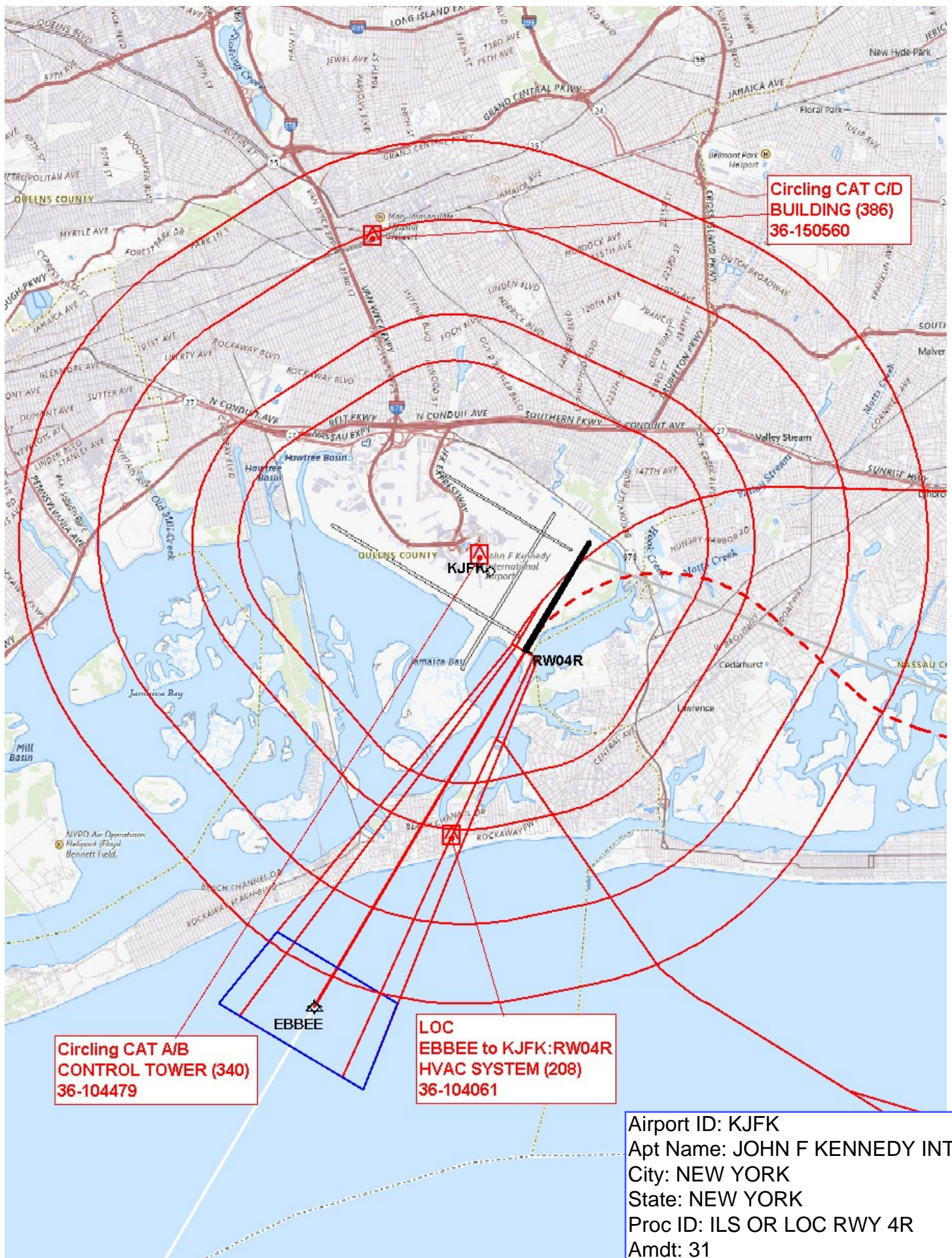
RLS Rwys 13L and 13R
HIRL all Rwys
TDZ/CL Rwys 4L, 4R, 13L, 22L and 31R

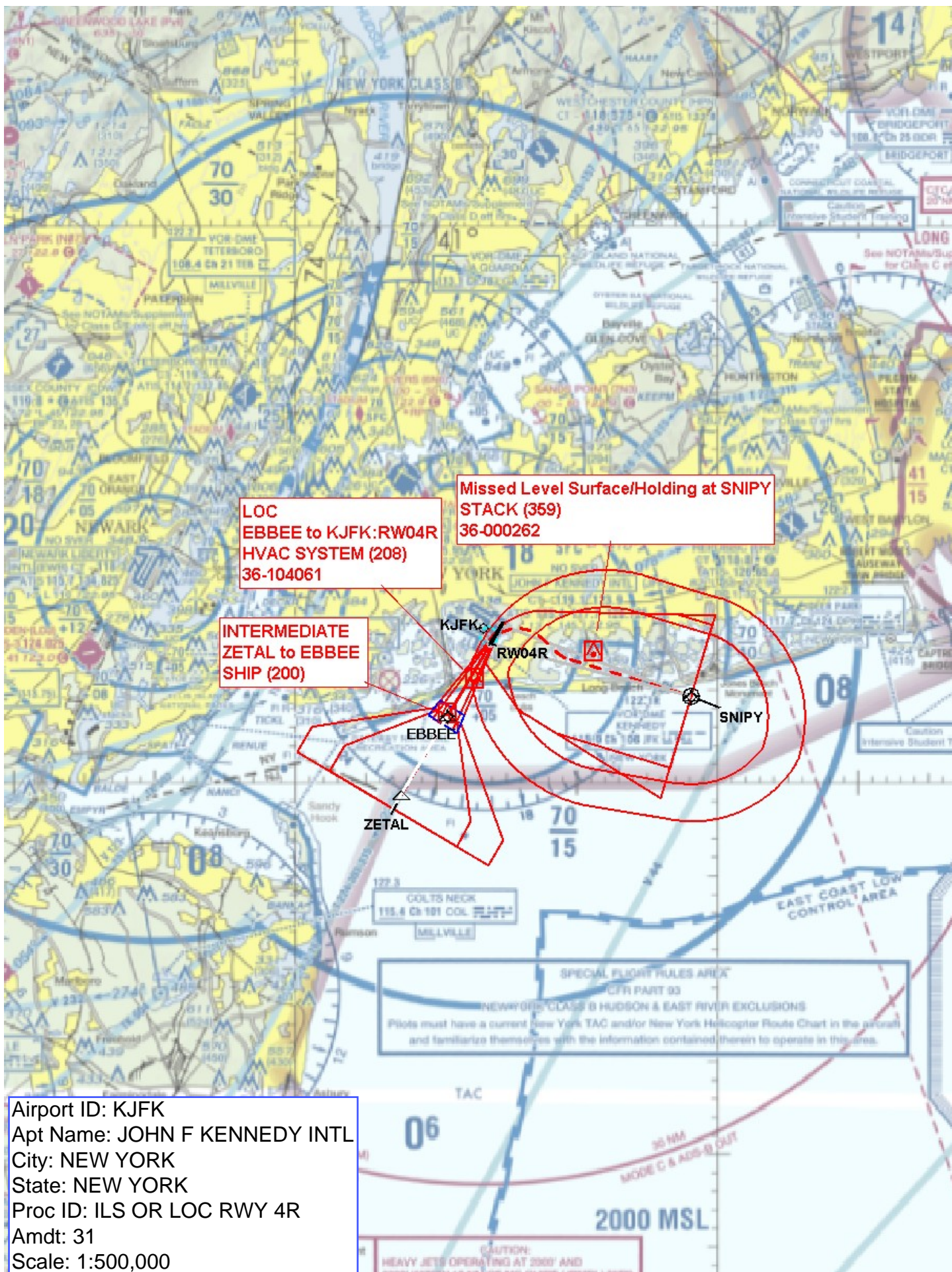


ILS - ALTERNATE LPV MISSED
ILS (CAT II/III) - ALTERNATE LPV MISSED
ASC



Airport ID: KJFK
Apt Name: JOHN F KENNEDY INTL
City: NEW YORK
State: NEW YORK
Proc ID: ILS OR LOC RWY 4R
Amdt: 31
Scale: 1:100,000





ALTERNATE LPV
MISSED

Missed Level Surface/Holding at SNIPY
STACK (359)
36-000262

INTERMEDIATE
ZETAL to EBBEE
SHIP (200)

Airport ID: KJFK
Apt Name: JOHN F KENNEDY INTL
City: NEW YORK
State: NEW YORK
Proc ID: ILS OR LOC RWY 4R
Amdt: 31
Scale: 1:500,000