

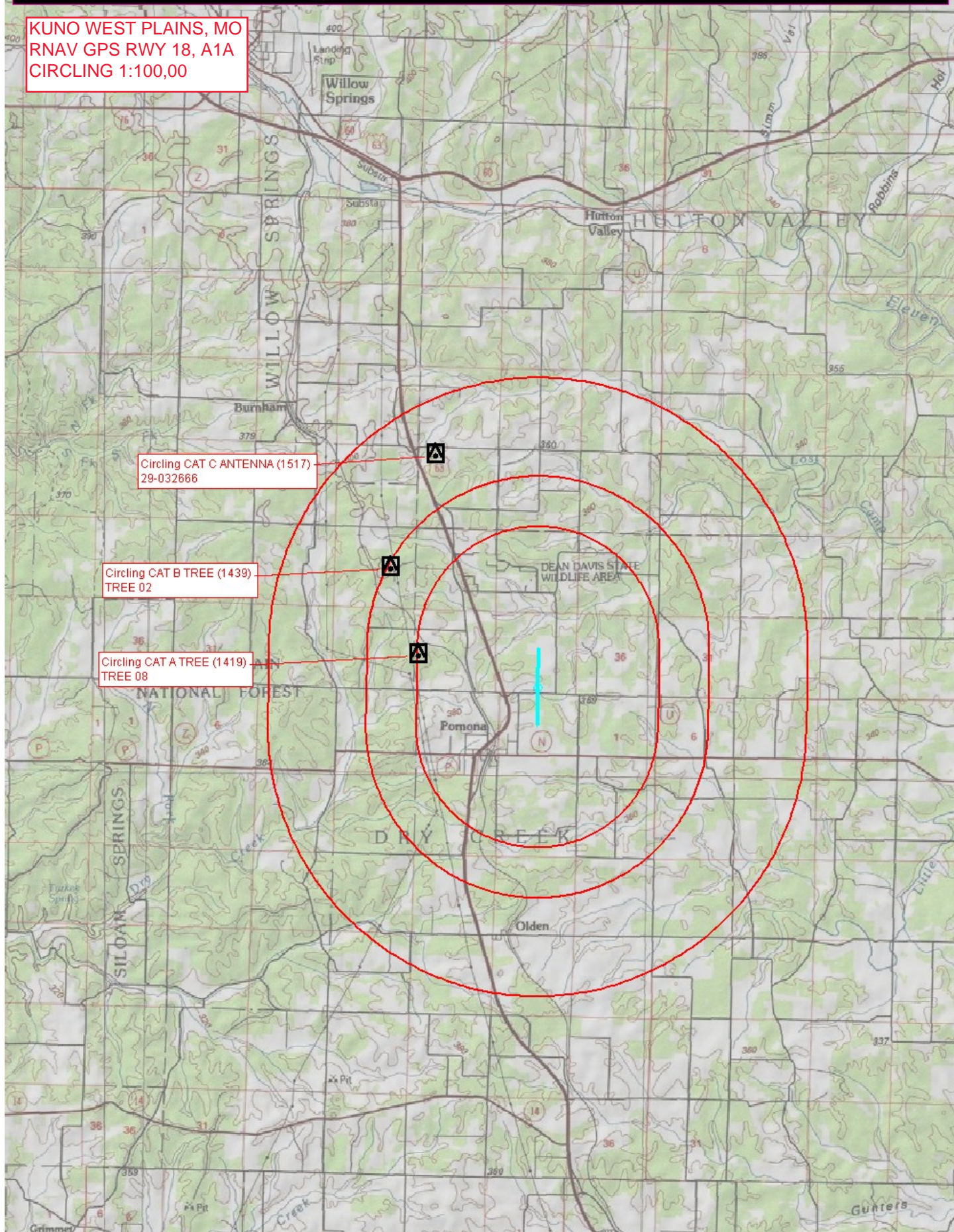


Flight Procedures Cover Page	Task Action: P-NOTAM	Task Type: IAP	Estimated Chart Date: 08/11/2022	APWS Task ID: EB4761E32B434018B872C3D387C66DA0	APWS Project ID: 4BC8259D010F41AD86EEA113D0F75A9D
Procedure: RNAV (GPS) RWY 18 AMDT 1A		Enroute: NO	Specialist: Campbell, Richard		Agreement Number:
Airport ID: KUNO			Airport City: WEST PLAINS		State: MO
Facility ID:	Facility Type:	Flight Inspection Remark Type:			
<p>Procedure Comments:</p> <p>ORDER 8260.3, CHAPTER 2, NEW CIRCLING CRITERIA APPLIED</p> <p>CONTACT: JASON KRETSCHMER AJV-A421 LEAD: 405.954.4019</p> <div style="text-align: center; margin-top: 20px;"> <i>Digitally signed by</i>  <b>JASON KRETSCHMER</b>  Jun 14, 2022 </div> <div style="text-align: right; margin-top: 100px;">   </div>					

KUNO WEST PLAINS, MO  
RNAV GPS RWY 18, A1A  
CIRCLING 1:100,00



OLD

WEST PLAINS, MISSOURI

AL-6611 (FAA)

20310

APP CRS	Rwy Idg	5101
179°	TDZE	1227
	Apt Elev	1228

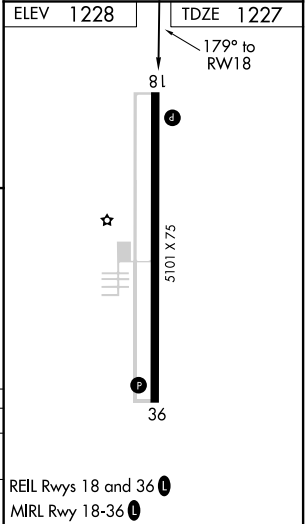
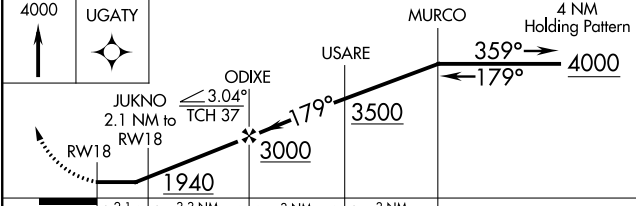
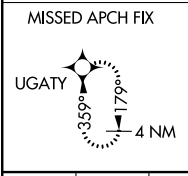
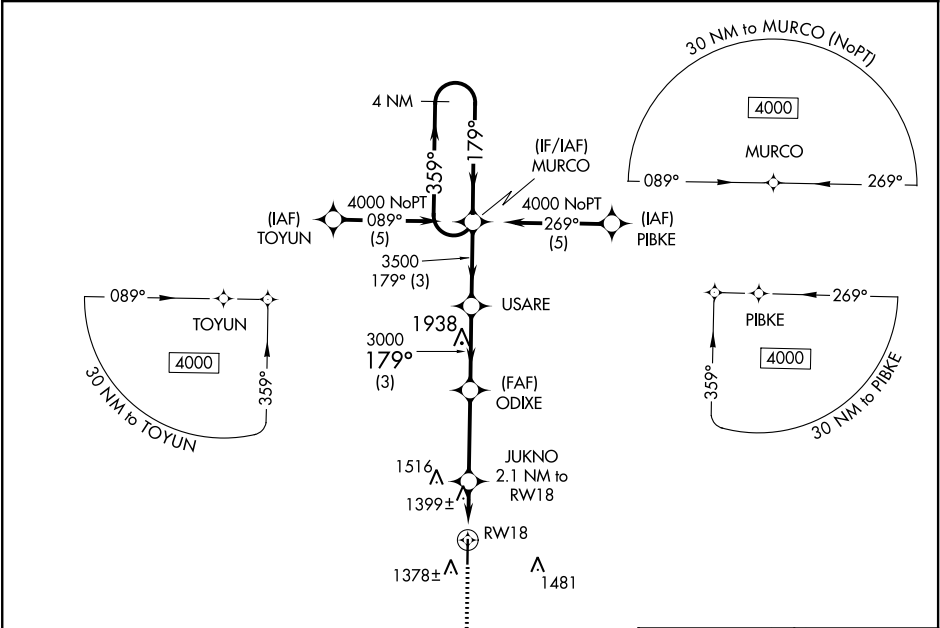
# RNAV (GPS) RWY 18

WEST PLAINS RGNL (UNO)

**⚠** DME/DME RNP-0.3 NA. Visibility reduction by helicopters NA. When local altimeter setting not received, use Mountain Home, AR altimeter setting and increase all MDA 140 feet and increase LNAV and Circling Cat C visibility ¼ mile. When VGSI inop, Straight-in NA at night.

**⚠** MISSED APPROACH: Climb to 4000 direct UGATY and hold.

ASOS 123.825	MEMPHIS CENTER 120.075 289.4	UNICOM 122.8 (CTAF) <b>0</b>
-----------------	---------------------------------	---------------------------------



CATEGORY	A	B	C	D
LNAV MDA	1660-1	433 (500-1)	1660-1¼ 433 (500-1¼)	NA
CIRCLING	1700-1	472 (500-1)	1720-1½ 492 (500-1½)	NA

WEST PLAINS, MISSOURI  
Amdt1 18NOV10

36°53'N-91°54'W

OLD

# WEST PLAINS RGNL (UNO)

## RNAV (GPS) RWY 18

NC-3, 21 APR 2022 to 19 MAY 2022