

Flight Procedures Cover Page	Task Action: Abbreviated Amendment	Task Type: IAP	Estimated Chart Date: 01/25/2024	APWS Task ID: EA4A662EAF6847259D8F73326337B1F3	APWS Project ID: 8032C2A71A4C4176BE36369D40D8E65D
Procedure: VOR/DME RWY 6 AMDT 19D		Enroute: NO	Specialist: Schones, Christopher		Agreement Number:
Airport ID: KBMG			Airport City: BLOOMINGTON		State: IN
Facility ID: OOM	Facility Type: VORTAC	Flight Inspection Remark Type:			
<div>Procedure Comments:</div> <div>ACTIVE data used for KBMG airport and PENDING data used for KBMG runways.</div> <div>CONTACT: CASIMIR TABAKA (405) 954-7931</div> <div>12/05/23: This is a corrected copy of the form approved on 11/16/23.</div> <div>1. Missed approach instructions changed from "CLIMB TO 2000 THEN CLIMBING RIGHT TURN TO 3000 ON DIRECT OOM VORTAC AND HOLD." to "CLIMB TO 2000 THEN CLIMBING RIGHT TURN TO 3000 DIRECT OOM VORTAC AND HOLD."</div> <div>2. Changed chart note from "WHEN LOCAL ALTIMETER SETTING NOT RECEIVED, USE TERRE HAUTE INTL-HULMAN FIELD ALTIMETER SETTING AND INCREASE ALL MDA 140 FEET AND S-6 CAT C AND D VISIBILITY 3/8 MILE, CIRCLING CAT C VISIBILITY 1/2 MILE, AND CIRCLING CAT D VISIBILITY 1/4 MILE." to "WHEN LOCAL ALTIMETER SETTING NOT RECEIVED, USE TERRE HAUTE RGNL ALTIMETER SETTING AND INCREASE ALL MDA 140 FEET AND S-6 CAT C AND D VISIBILITY 3/8 SM, CIRCLING CAT C VISIBILITY 1/2 SM, AND CIRCLING CAT D VISIBILITY 1/4 SM."</div> <div><div>QUALITY 41 CHECKED</div><div>QUALITY 13 CHECKED</div></div>					

VORTAC OOM	APP CRS	Rwy Idg	3494
110.2	058°	TDZE	840
Chan 39		Apt Elev	846

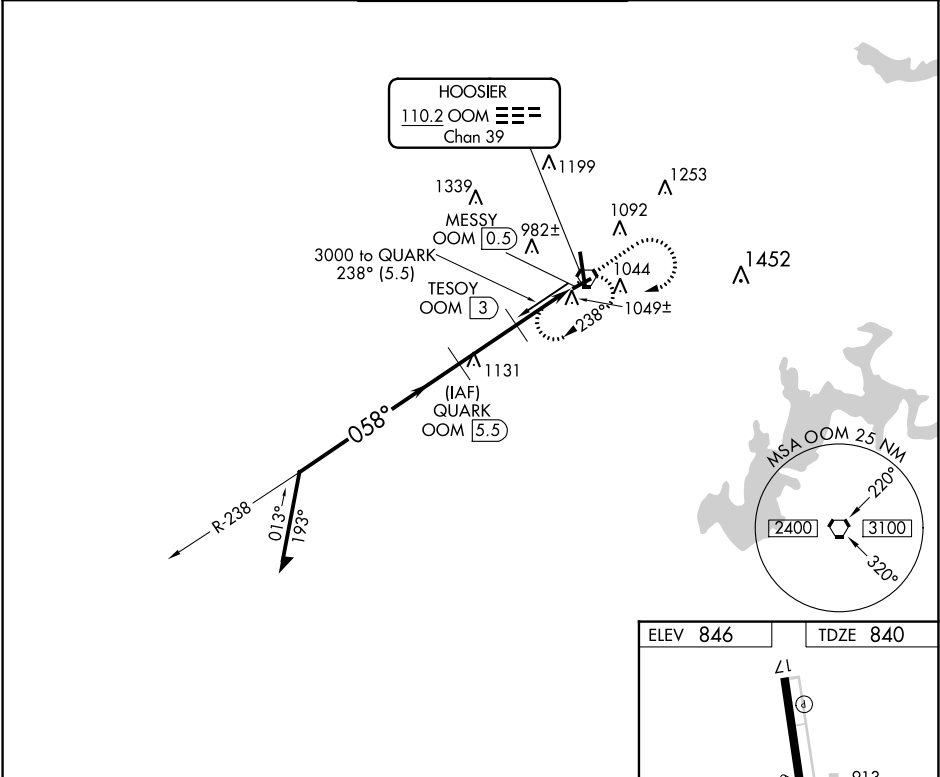
OLD

VOR/DME RWY 6
MONROE COUNTY (BMG)

⚠ Rwy 6 Straight-in and Circling and Circling to Rwy 24 NA at night. Helicopter visibility reduction below 1 SM NA. When local altimeter setting not received, use Terre Haute Rgnl altimeter setting; increase all MDA 140 feet and S-6 Cat C and D visibility ¾ SM, Circling Cat C and D visibility ½ SM.

MISSSED APPROACH: Climb to 2000 then climbing right turn to 3000 direct OOM VORTAC and hold.

ASOS 134.525	HULMAN APP CON 128.025 339.8	BLOOMINGTON TOWER ★ 120.775 (CTAF) 0	GND CON 121.9	UNICOM 122.95
-----------------	---------------------------------	---	------------------	------------------



Remain within 10 NM

3000 238°

058°

2500

1680

3.09° TCH 37

2.5 NM

2.5 NM

QUARK OOM 5.5

TESQY OOM 3

MESSY OOM 0.5

2000

3000

OOM

VGSI and descent angles not coincident (VGSI Angle 4.00/TCH 37).

ELEV 846

TDZE 840

L1

6500 X 130

913

917

058° 5 NM from FAF

3798 X 100

35

MIRL Rwy 6-24 0

HIRL Rwy 17-35 0

REIL Rwy 17

CATEGORY	A	B	C	D
S-6	1300-1	460 (500-1)	1300-1¾	460 (500-1¾)
CIRCLING	1380-1 534 (600-1)	1400-1 554 (600-1)	1400-1½ 554 (600-1½)	1620-2½ 774 (800-2½)