

Flight Procedures Cover Page	Task Action: Abbreviated Amendment	Task Type: IAP	Estimated Chart Date: 01/25/2024	APWS Task ID: EA4A662EAF6847259D8F73326337B1F3	APWS Project ID: 8032C2A71A4C4176BE36369D40D8E65D
Procedure: VOR/DME RWY 6 AMDT 19D		Enroute: NO	Specialist: Schones, Christopher		Agreement Number:
Airport ID: KBMG			Airport City: BLOOMINGTON		State: IN
Facility ID: OOM	Facility Type: VORTAC	Flight Inspection Remark Type:			
<div>Procedure Comments: ACTIVE data used for KBMG airport and PENDING data used for KBMG runways. CONTACT: CASIMIR TABAKA (405) 954-7931</div> <div><div>QUALITY 41 CHECKED</div><div>QUALITY 13 CHECKED</div></div>					

VORTAC OOM	APP CRS	Rwy Idg	3494
110.2	058°	TDZE	840
Chan 39		Apt Elev	846

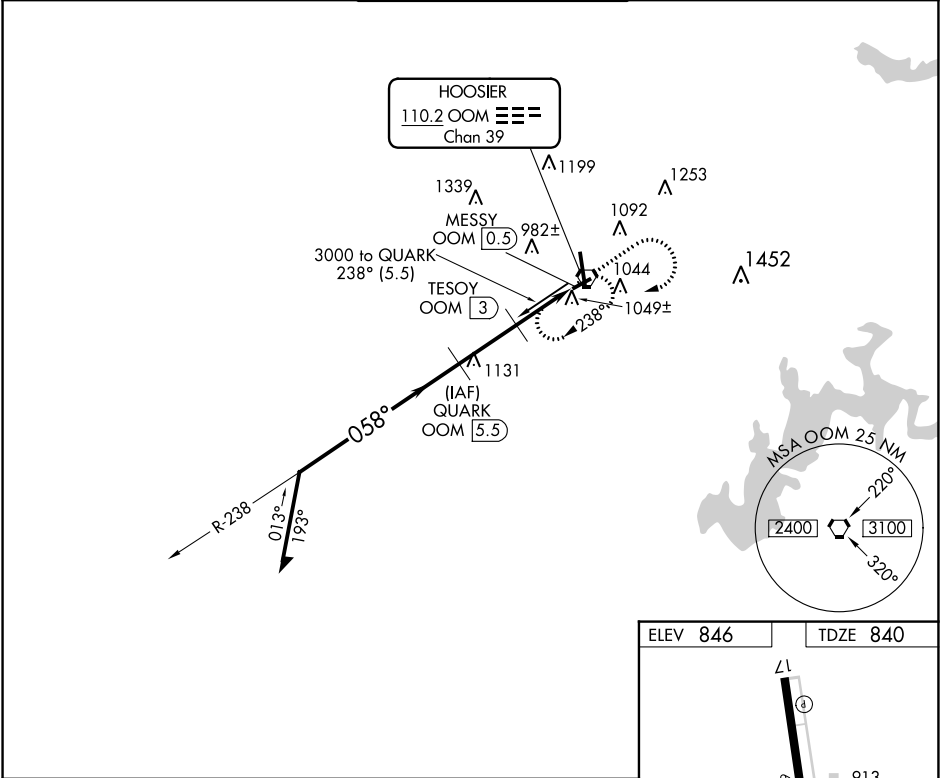
OLD

VOR/DME RWY 6
MONROE COUNTY (BMG)

⚠ Rwy 6 Straight-in and Circling and Circling to Rwy 24 NA at night. Helicopter visibility reduction below 1 SM NA. When local altimeter setting not received, use Terre Haute Rgnl altimeter setting; increase all MDA 140 feet and S-6 Cat C and D visibility ¾ SM, Circling Cat C and D visibility ½ SM.

MISSSED APPROACH: Climb to 2000 then climbing right turn to 3000 direct OOM VORTAC and hold.

ASOS 134.525	HULMAN APP CON 128.025 339.8	BLOOMINGTON TOWER ★ 120.775 (CTAF) 0	GND CON 121.9	UNICOM 122.95
-----------------	---------------------------------	---	------------------	------------------



Remain within 10 NM

3000 238°

058°

2500

1680

3.09° TCH 37

2.5 NM

2.5 NM

QUARK OOM 5.5

TESQY OOM 3

MESSY OOM 0.5

2000

3000

OOM

VGSI and descent angles not coincident (VGSI Angle 4.00/TCH 37).

CATEGORY	A	B	C	D
S-6	1300-1	460 (500-1)	1300-1¾	460 (500-1¾)
CIRCLING	1380-1 534 (600-1)	1400-1 554 (600-1)	1400-1½ 554 (600-1½)	1620-2½ 774 (800-2½)

ELEV 846 TDZE 840

058° 5 NM from FAF

6500 x 150

913

917

3798 x 100

35

MIRL Rwy 6-24 0

HIRL Rwy 17-35 0

REIL Rwy 17