

Flight Procedures Cover Page	Task Action: Abbreviated Amendment	Task Type: IAP	Estimated Chart Date: 08/07/2025	APWS Task ID: E96FAC0DEDD741D99190E2AE666203C8	APWS Project ID: 641F5A5AA2A845F682721FFB70AAC18A
Procedure: RNAV (GPS) RWY 27 AMDT 2A		Enroute: NO	Specialist: Bristow, Travis		Agreement Number:
Airport ID: KLKU			Airport City: LOUISA		State: VA
Facility ID:	Facility Type:	Flight Inspection Remark Type:			
<div>Procedure Comments:</div> <div>ACTIVE AIRPORT AND RUNWAY DATA USED.</div> <div>PROCESSED IAW TECHNICAL SUPPORT GROUP (AJF-17) MEMO DATED 07/07/2021 GUIDANCE FOR PROCEDURAL CHANGES REQUIRING FLIGHT INSPECTION/VALIDATION.</div> <div>CLEAR NOTAM FDC 4/3427: CIRCLING CAT A MINIMUM CHANGED FROM "CMDA 900/406 HAA" TO "CMDA 920/426 HAA" DUE TO NEW OBSTACLE SURVEY.</div> <div>LOC RWY 27 APPROACH IS BEING PROCESSED FOR FLIGHT CHECK. CIRCLING OBSTACLES MATCH LOC RWY 27 APPROACH.</div> <div>CONTACT DAVID DANNER, AJV-A421, 405-954-5077.</div> <div><div>QUALITY 38 CHECKED</div><div>QUALITY 25 CHECKED</div></div>					

WAAS CH <b>58318</b> <b>W27A</b>	APP CRS <b>272°</b>	Rwy Idg TDZE <b>494</b> Apt Elev <b>494</b>
--	------------------------	---

OLD

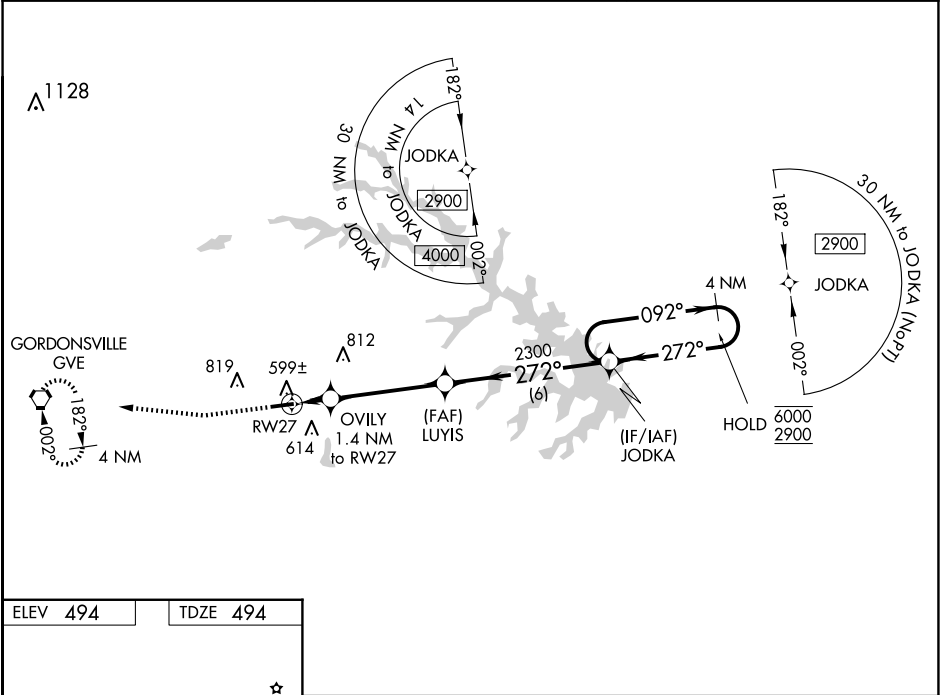
RNAV (GPS) RWY 27  
LOUISA COUNTY/FREEMAN FLD (LKU)

RNP APCH

**⚠** Circling NA north of Rwy 9-27. Baro-VNAV NA when using Orange altimeter setting. For uncompensated Baro-VNAV systems, LNAV/VNAV NA below -15°C or above 54°C. When local altimeter setting not received, use Orange altimeter setting and increase all DA to 780 feet and all MDA 40 feet and increase LPV and LNAV/VNAV visibility ½ SM.

**MISSED APPROACH:** Climb to 1000 then climbing right turn to 2900 direct GVE VORTAC and hold, continue climb-in-hold to 2900.

AWOS-3 <b>119.475</b>	POTOMAC APP CON <b>132.85 323.125</b>	UNICOM <b>122.975 (CTAF) 0</b>
--------------------------	--	-----------------------------------



ELEV **494** TDZE **494**

REIL Rwy 9 and 27 0  
MIRL Rwy 9-27 0

1000 2900 GVE

\*LNAV only

RW27 OVLVY 1.4 NM to RW27 LUYIS 2300 JODKA 272° 2300

4 NM Holding Pattern

GP 3.00° TCH 40

CATEGORY	A	B	C	D
LPV DA	744-¾	250 (300-¾)	NA	
LNAV/VNAV DA	744-¾	250 (300-¾)	NA	
LNAV MDA	860-1	366 (400-1)	NA	
CIRCLING	900-1 406 (500-1)	960-1 466 (500-1)	NA	

NE-3, 23 JAN 2025 to 20 FEB 2025

NE-3, 23 JAN 2025 to 20 FEB 2025



FT  
IN

20000

40000

50000

KLKU  
LOUISA COUNTY/FREEMAN FLD  
LOUISA, VA  
RNAV (GPS) RWY 27  
AMDT 2A  
CIRCLING  
1:100,000

