

FIG

RNAV (GPS) RWY 4

SHEBOYGAN COUNTY MEML INTL (SBM)

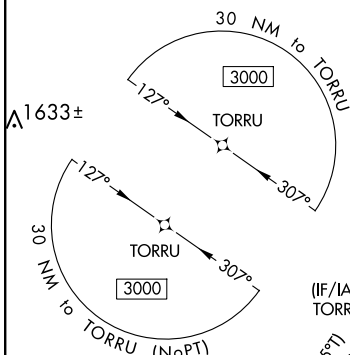
T
A Rwy 4 helicopter visibility reduction below $\frac{3}{4}$ SM NA. For uncompensated Baro-VNAV systems, LNAV/VNAV NA below -19°C or above 54°C.

MISSED APPROACH: Climb to 3000
direct JADN and hold.

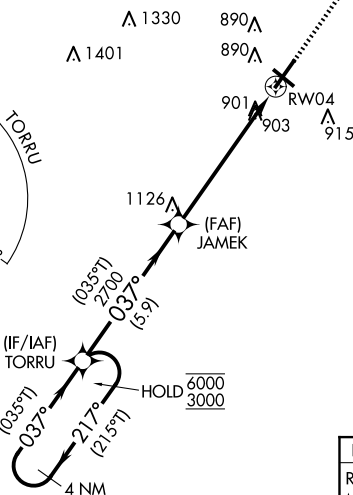
UNICOM
122.7 (CTAF) **L**

PROTOTYPE-NOT FOR NAVIGATION

307/30 CW 320/30 (NoPT)
not authorized when R-6903 active.

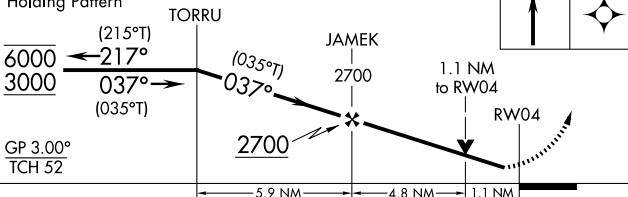


217/30 CW 307/30
not authorized when R-6903 active.




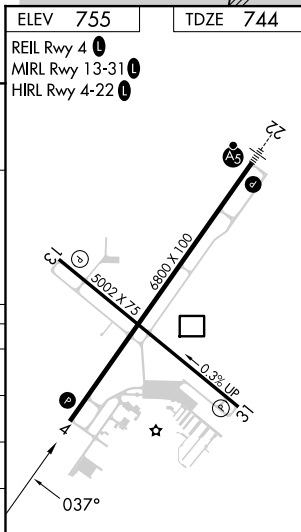
R-6903

4 NM
Holding Pattern



3000	JADNI
	

CATEGORY	A	B	C	D
LPV DA	994-1 250 (300-1)			
LNAV/ VNAV DA	1193-1 $\frac{3}{8}$ 449 (500-1 $\frac{3}{8}$)			
LNAV MDA	1160-1 416 (500-1)		1160-1 $\frac{1}{8}$ 416 (500-1 $\frac{1}{8}$)	
 CIRCLING	1200-1 445 (500-1)	1240-1 485 (500-1)	1340-1 $\frac{1}{2}$ 585 (600-1 $\frac{1}{2}$)	1360-2 605 (700-2)



SHEBOYGAN COUNTY MEML INTL (SBM)

RNAV (GPS) RWY 4