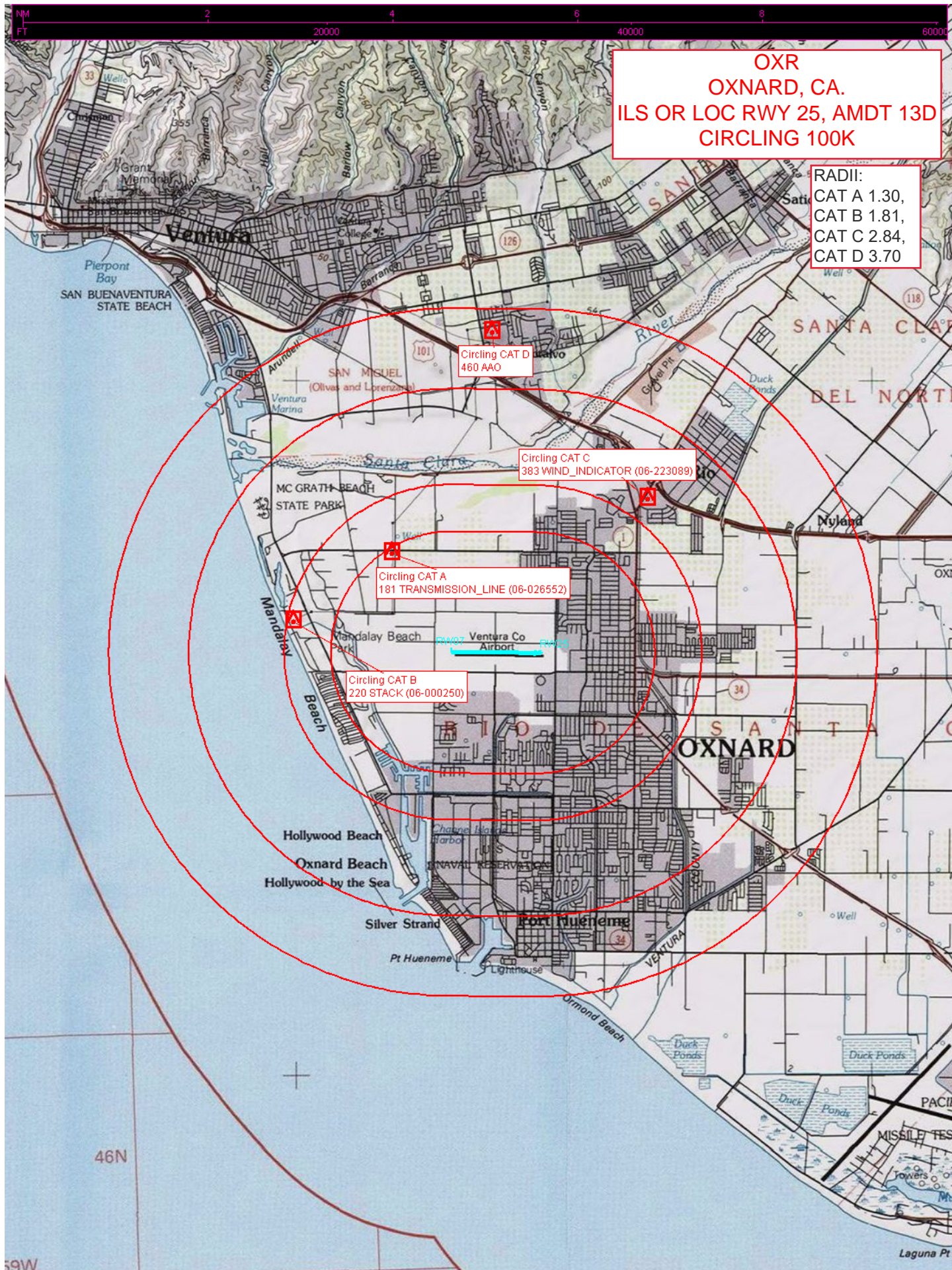


Flight Procedures Cover Page	Task Action: P-NOTAM	Task Type: IAP	Estimated Chart Date: 11/04/2021	APWS Task ID: E8AA506F775F425895767A8CBD12AEA3	APWS Project ID: 0988FD4A906D4C82AF5418E855ABBF06
Procedure: ILS OR LOC RWY 25 AMDT 13D		Enroute: NO	Specialist: Brooks, Charles		Agreement Number:
Airport ID: KOKR			Airport City: OXNARD		State: CA
Facility ID: OKR	Facility Type: ILS	Flight Inspection Remark Type:			
<p>Procedure Comments: P-NOTAM</p> <p>ORDER 8260.3, CHAPTER 2, NEW CIRCLING CRITERIA APPLIED.</p> <p>CAT B STACK (06-000250) 341223.17N/1191504.67W 220 (1A) CAT C WIND INDICATOR (06-223089) 341342.58N/1191027.92W 383 (1B) CAT D AAO 341530.22N/1191229.30W 460 (2C)</p> <p>CONTACT: JASON KRETSCHMER, AJV-A421, 405-954-4019</p> <p style="text-align: center;"><i>Digitally signed by</i> JASON KRETSCHMER Aug 26, 2021</p>					





LOC I- OXR	APP CRS	Rwy Idg	5500
108.7	256°	TDZE	44
		Apt Elev	45

ILS or LOC RWY 25

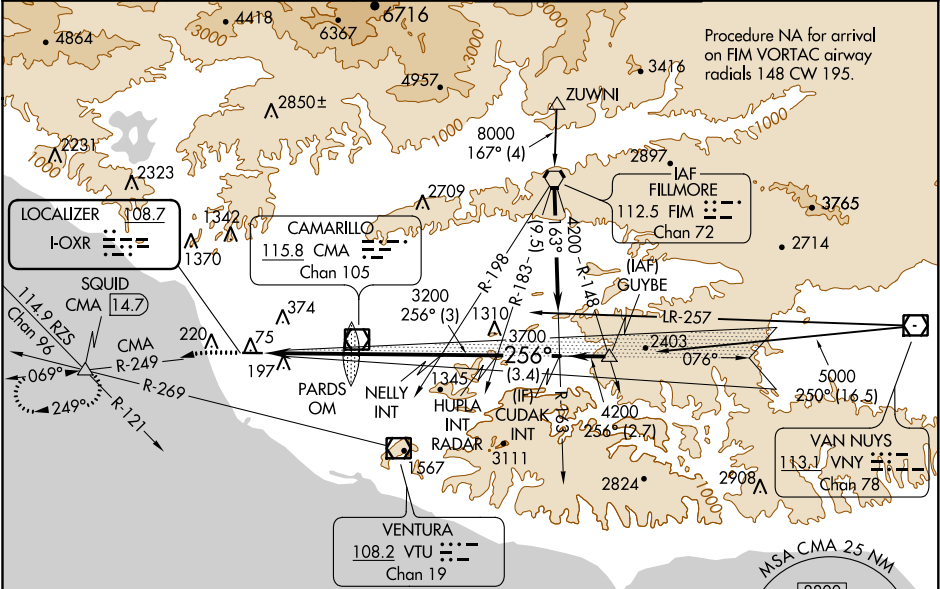
OXNARD (OXR)

W Rwy 25 helicopter visibility reduction below ¾ SM NA. Autopilot coupled approach NA below 867'. Inop table does not apply. When local altimeter setting not received, use Camarillo altimeter setting and increase S-ILS 25 DA to 312 and all MDA 20 feet, increase S-LOC 25 Cat C/D visibility ½ mile, and Circling Cat C visibility ½ mile, Cat D ¼ mile.

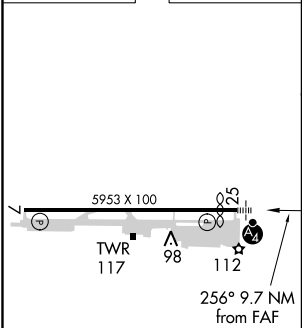
MALSF

MISSED APPROACH: Climb to 520 then climbing left turn to 2000 on CMA VOR/DME R-249 to SQUID INT/14.7 DME and hold.

ATIS 118.05	POINT MUGU APP CON ★ 124.7 335.5	OXNARD TOWER ★ 134.95 (CTAF) 0 257.8	GND CON 121.9
-----------------------	--	--	-------------------------



ELEV 45	D	TDZE 44
---------	----------	---------



REIL Rwy 7	MRL Rwy 7-25
FAF to MAP 9.7 NM	
Knots	60 90 120 150 180
Min:Sec	9:42 6:28 4:51 3:53 3:14