

OLD

ROCKWOOD, TENNESSEE

AL-5408 (FAA)

20142

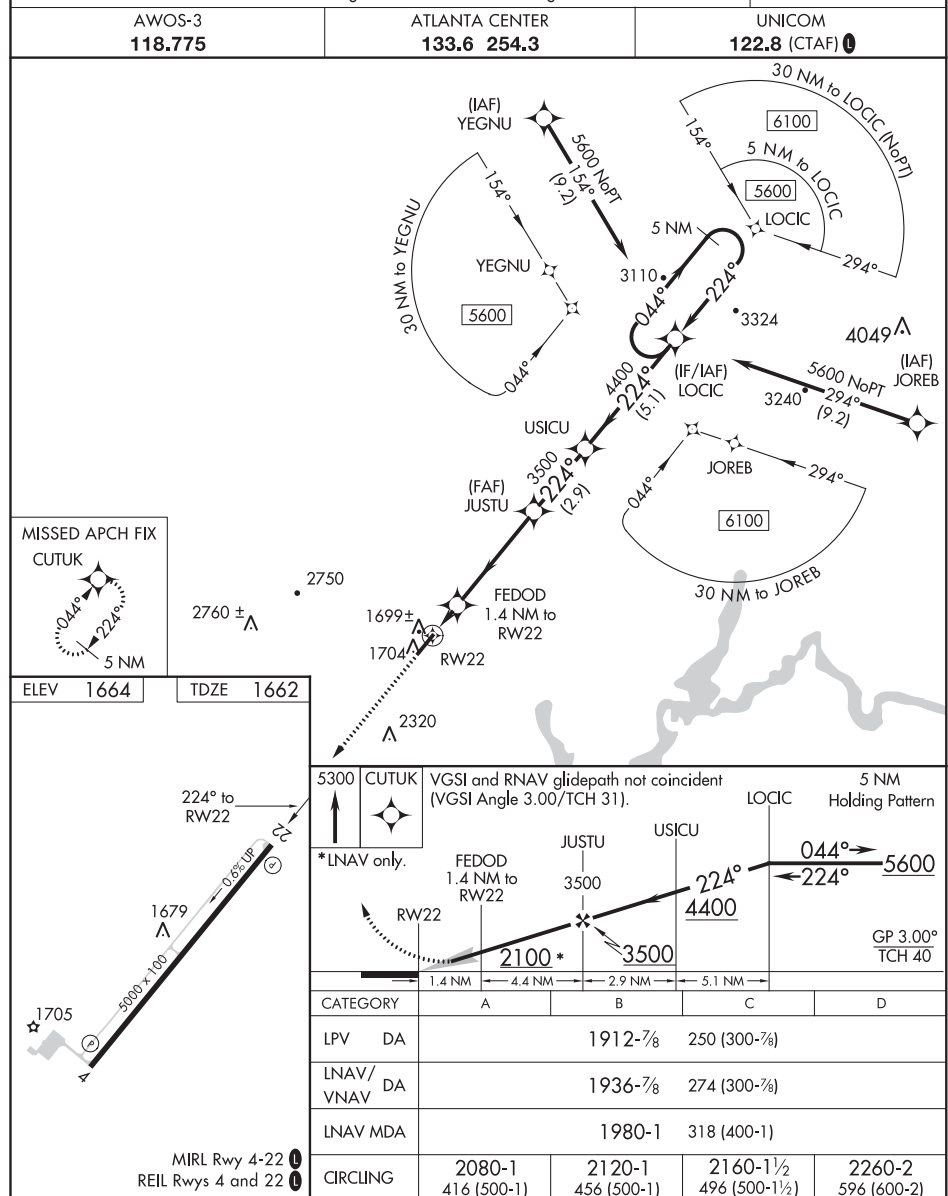
WAAS CH 61126 W22A	APP CRS 224°	Rwy Idg TDZE Apt Elev	5000 1662 1664
--	------------------------	-----------------------------	---

RNAV (GPS) RWY 22

ROCKWOOD MUNI (RKW)

NA For uncompensated Baro-VNAV systems, LNAV/VNAV NA below -18°C (0°F) or above 33°C (91°F). DME/DME RNP-0.3 NA. When local altimeter setting not received, use Crossville altimeter setting and increase all DA 75 feet and all MDA 80 feet; increase LPV all Cats, LNAV/VNAV all Cats, LNAV Cat C and D and Circling Cat D visibility ¼ mile. Baro-VNAV and VDP NA when using Crossville altimeter setting.

MISSED APPROACH:
Climb to 5300 direct CUTUK and hold, continue climb-in-hold to 5300.



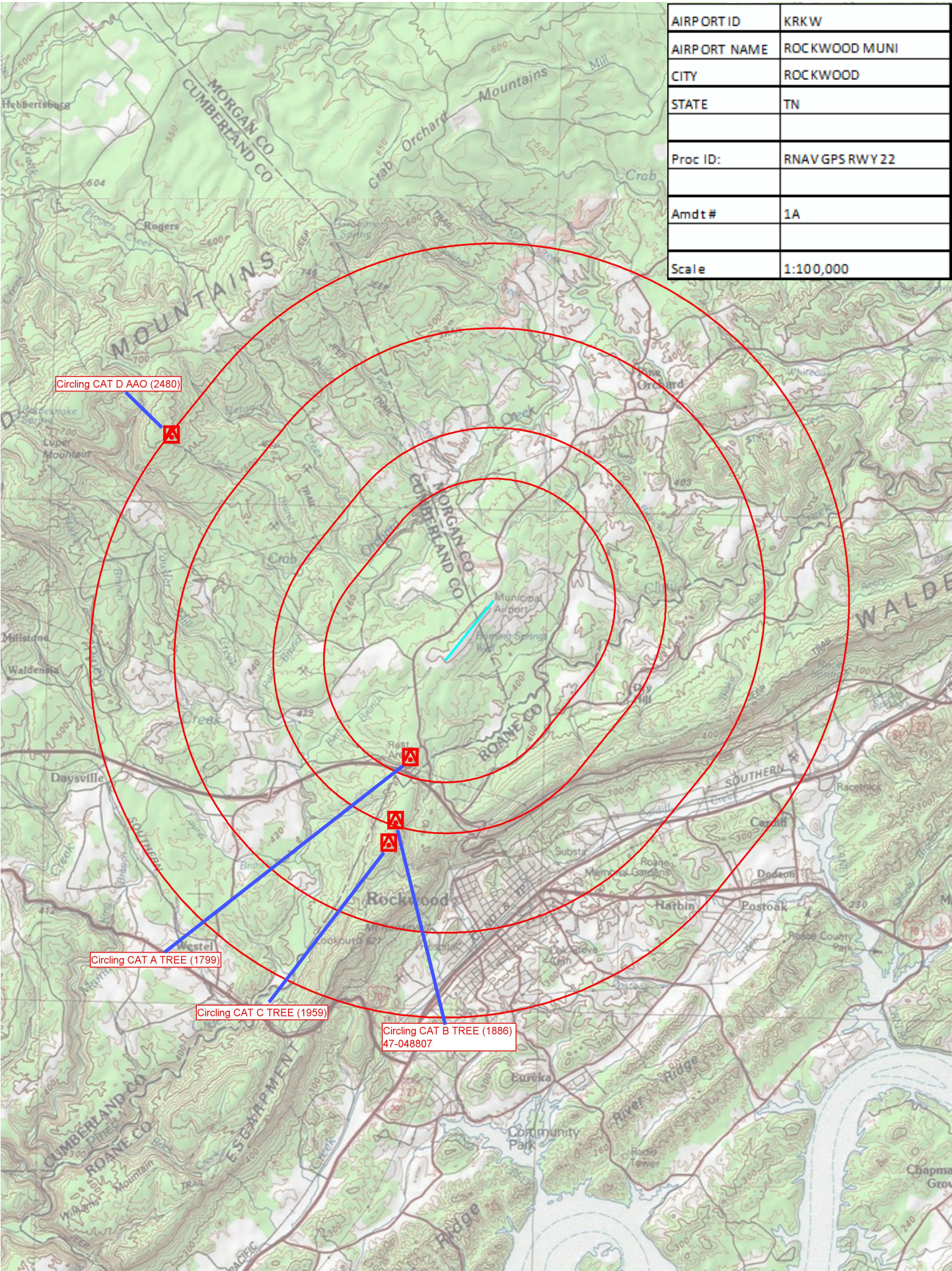
SE-1, 21 MAY 2020 to 18 JUN 2020

SE-1, 21 MAY 2020 to 18 JUN 2020

ROCKWOOD, TENNESSEE
Amdt 1A 12NOV15

35°55'N-84°41'W

ROCKWOOD MUNI (RKW)
RNAV (GPS) RWY 22



AIRPORT ID	KRKW
AIRPORT NAME	ROCKWOOD MUNI
CITY	ROCKWOOD
STATE	TN
Proc ID:	RNAVGPS RWY 22
Amdt #	1A
Scale	1:100,000