

| | | | | | |
|--|-------------------------|--------------------------------|-------------------------------------|---|--|
| Flight Procedures Cover Page | Task Action: P-NOTAM | Task Type: IAP | Estimated Chart Date: 07/15/2021 | APWS Task ID: E810352AD36944679E86A4F412CF1A83 | APWS Project ID: C202C08CCD444CE4AC559C98DE4885D8 |
| Procedure: LOC BC RWY 29R AMDT 8C | | Enroute: NO | Specialist: Lafferty, James | | Agreement Number: |
| Airport ID: KTUS | | | Airport City: TUCSON | | State: AZ |
| Facility ID: | Facility Type: | Flight Inspection Remark Type: | | | |
| <p>Procedure Comments:</p> <p>P-NOTAM</p> <p>This Cancels FDC 0/0605</p> <p>Order 8260.3, chapter 2, New Circling Criteria Applied</p> <p>Contact Dave Teffeteller at 202-267-5177</p> | | | | | |

QUALITY
18
CHECKED

QUALITY
26
CHECKED

| | | |
|---|------------------------|---|
| LOC/DME I-TUS 111.7 Chan 54 | APP CRS 303° | Rwy Idg TDZE 2643 Apt Elev 2643 |
|---|------------------------|---|

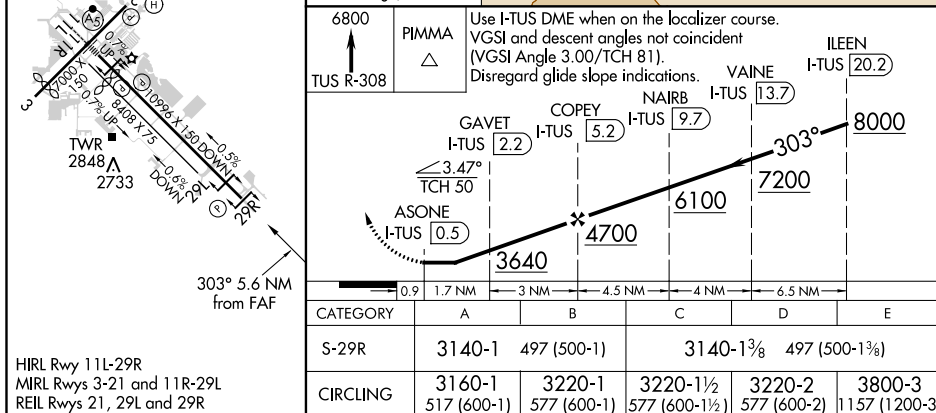
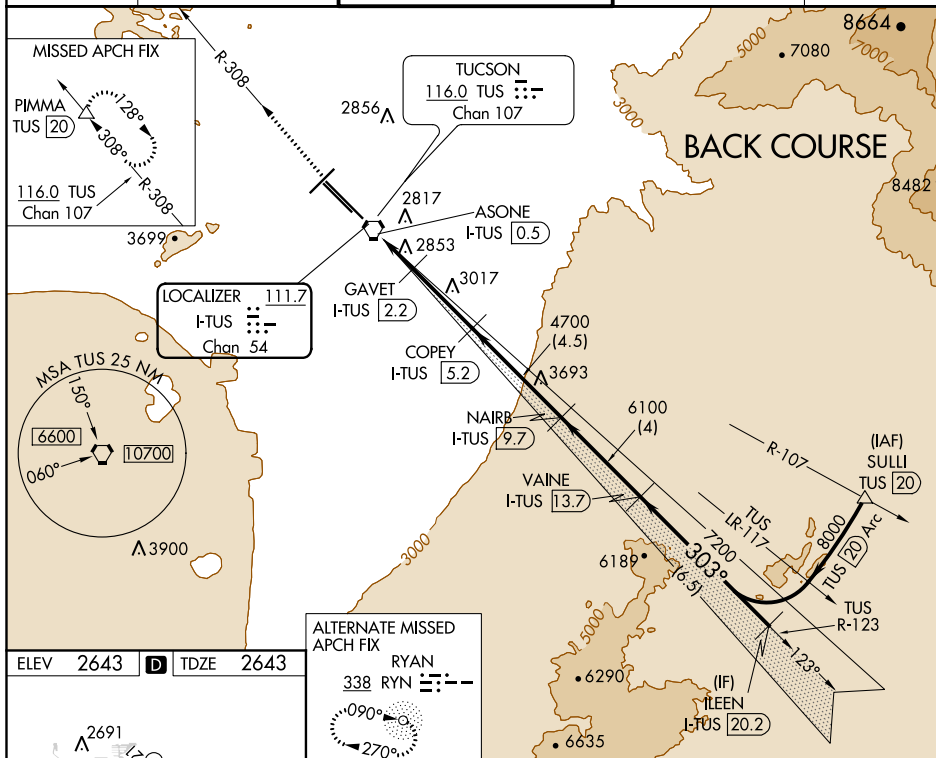
LOC BC RWY 29R

TUCSON INTL (TUS)

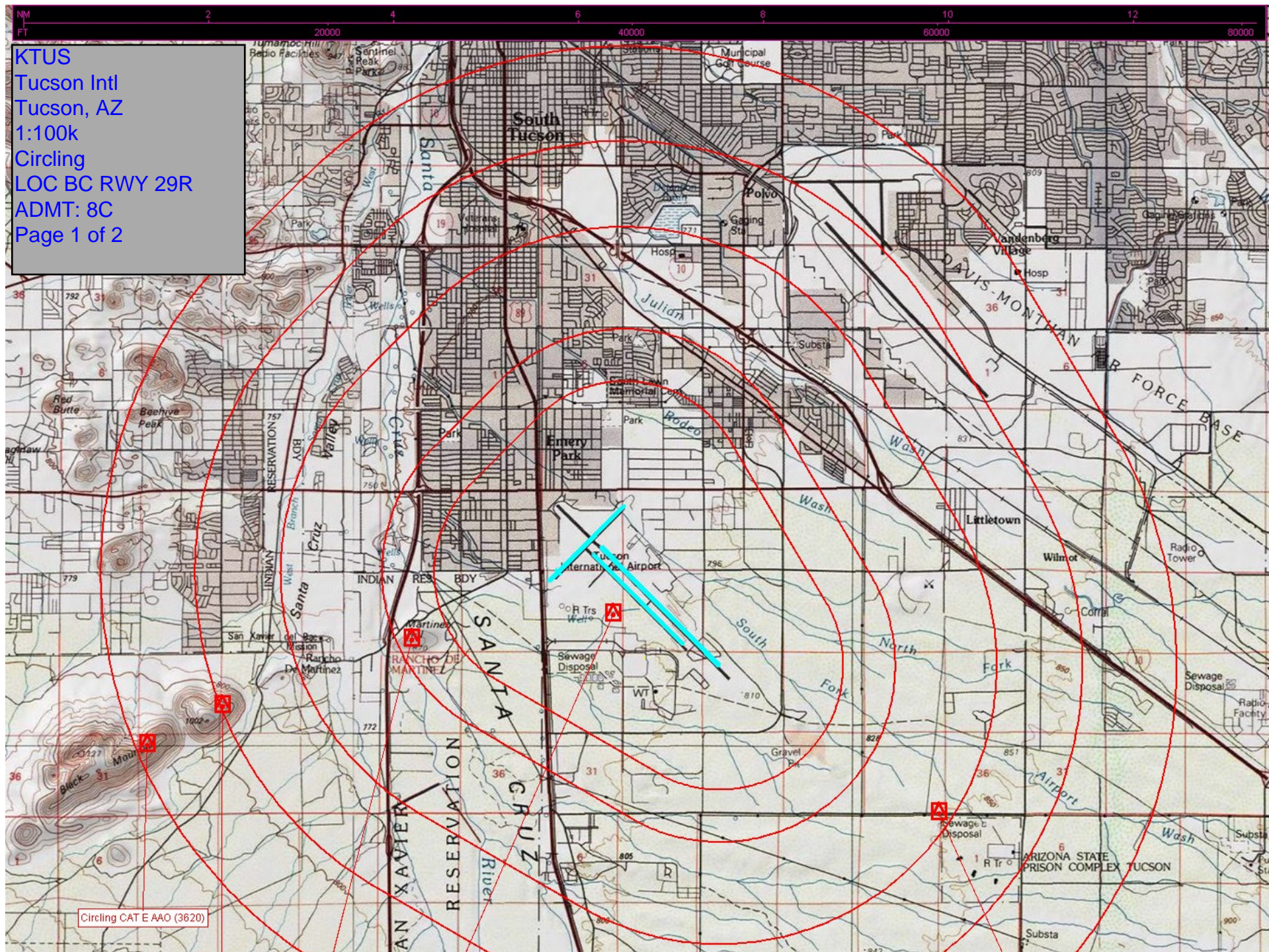
DME required for procedure entry. DME required.

MISSED APPROACH: Climb to 6800 on TUS VORTAC
R-308 to PIMMA/TUS VORTAC 20 DME and hold.

| | | | | |
|-----------------------------|--------------------------------------|------------------------------------|-------------------------------|---------------------------------|
| ATIS 123.8 279.65 | TUCSON APP CON 119.4 318.1 | TUCSON TOWER 118.3 257.8 | GND CON 124.4 348.6 | CLNC DEL 126.65 326.2 |
|-----------------------------|--------------------------------------|------------------------------------|-------------------------------|---------------------------------|



Tucson Intl
Tucson, AZ
1:100k
Circling
LOC BC RWY 29R
ADMT: 8C
Page 1 of 2



Tucson Intl
Tucson, AZ
1:100k
Circling
LOC BC RWY 29R
ADMT: 8C
Page 2 of 2

