

Flight Procedures Cover Page	Task Action: FLIGHT CHECK	Task Type: IAP	Estimated Chart Date: 11/27/2025	APWS Task ID: E7CE0B8617A44D3FBFDB0EF1CDE33E13	APWS Project ID: 0D734424C0014061A8B8E32680380953
Procedure: RNAV (GPS) RWY 12 AMDT 2		Enroute: NO	Specialist: Given, Cody		Agreement Number:
Airport ID: KJEF			Airport City: JEFFERSON CITY		State: MO
Facility ID:	Facility Type:	Flight Inspection Remark Type: New FC Slot			
<div>Procedure Comments:</div> <div>FULL AMENDMENT COMPLETED UTILIZING ACTIVE AIRNAV DATA FOR KJEF RWY 12.</div> <div>APT MAGVAR CHANGED.</div> <div>CONTACT: RAKE MCGRAW: AJV-A422, 405-954-8711.</div> <div><div>QUALITY 6 CHECKED SN 7/14/25</div><div>QUALITY 9 CHECKED BEGUE</div></div>					

JEFFERSON CITY, MISSOURI


AL-796 (FAA)

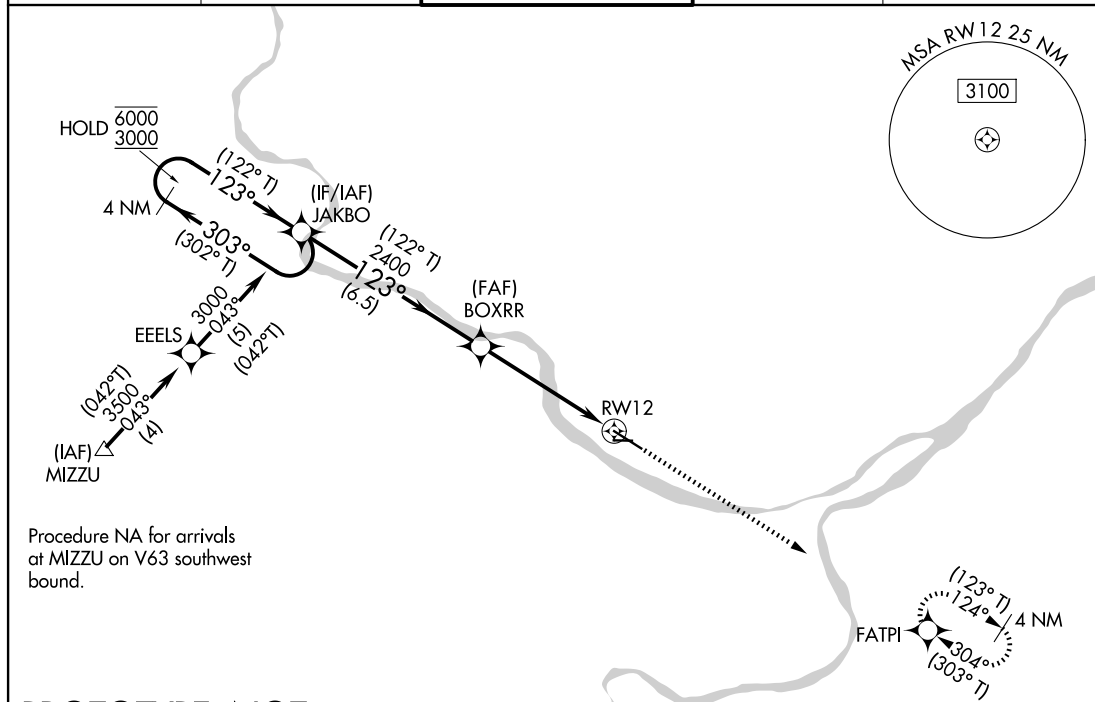
FIG

WAAS CH 49005 W12A	APP CRS 123°	Rwy Ldg TDZE Apt Elev	6000 548 549
--	------------------------	-----------------------------	---

RNAV (GPS) RWY 12

JEFFERSON CITY MEML (JEF)

RNP APCH - GPS.		MISSED APPROACH: Climb to 2800 direct FATPI and hold.		
	For uncompensated Baro-VNAV systems, LNAV/VNAV NA below -16°C or above 48°C. Rwy 12 helicopter visibility reduction below 3/4 SM NA. Circling Rwy 9 NA at night.			
ASOS 133.625	MIZZU APP CON 124.375 353.925	JEFFERSON CITY TOWER ★ 125.6 (CTAF) 0	GND CON 121.7	UNICOM 122.95



PROTOTYPE: NOT
FOR NAVIGATION

4 NM

Holding Pattern

6000

3000

(122° T)

303°

123°

(122° T)

GP 3.50°

TCH 45

JAKBO

BOXRR

2400

2400

1.5 NM to RW12

RW12

2800

FATPI

VGSI and RNAV glidepath not coincident

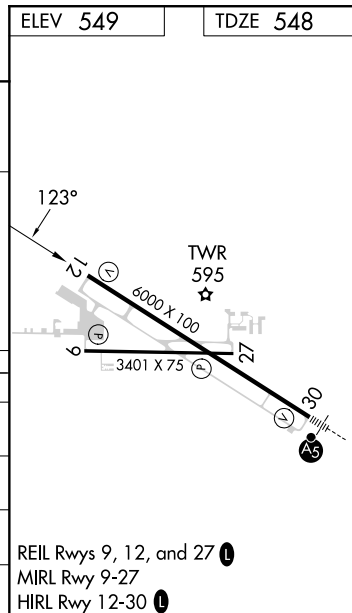
(VGSI Angle 3.50/TCH 64).

6.5 NM

3.4 NM

1.5 NM

CATEGORY	A	B	C	D
LPV DA	874-1 326 (400-1)			
LNAV/VNAV DA	964-1 ¹ / ₈ 416 (500-1 ¹ / ₈)			
LNAV MDA	1160-1 612 (700-1)		1160-1 ³ / ₄ 612 (700-1 ³ / ₄)	
CIRCLING	1240-1 691 (700-1)		1320-2 ¹ / ₄ 771 (800-2 ¹ / ₄)	1560-3 1011 (1100-3)



JEFFERSON CITY, MISSOURI

Amdt 2 FIG

38°35'N-92°09'W

JEFFERSON CITY MEML (JEF)

RNAV (GPS) RWY 12

AUTOMATED AL-796 RNAV (GPS) RWY 12

NC-3
14 JUL 2025
COMPILER: CG
REVIEWER:
DBL CHKR:
EFF: FIG

WAAS CH 49005 W12A	APP CRS 123°	Rwy Idg 6000 TDZE 548 Apt Elev 549
--	------------------------	---

RNAV (GPS) RWY 12

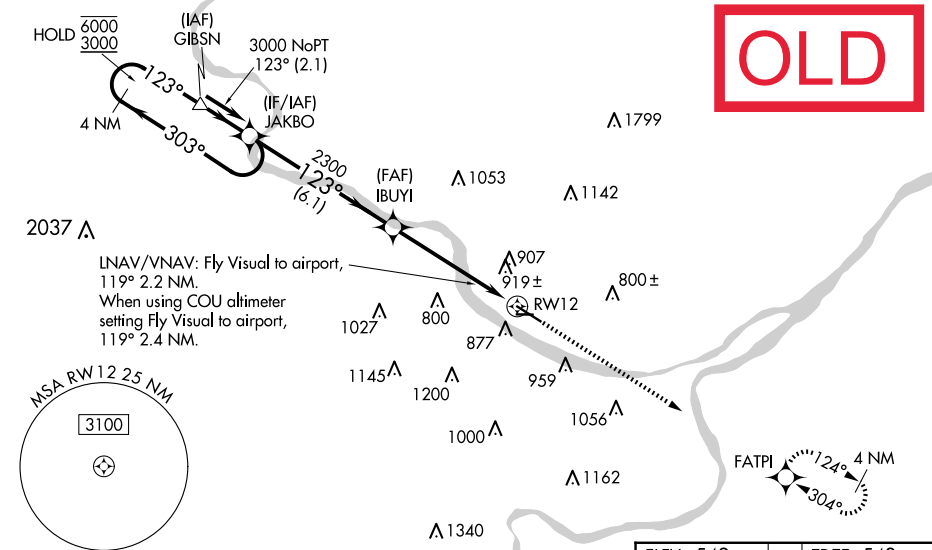
JEFFERSON CITY MEML (JEF)

RNP APCH - GPS.

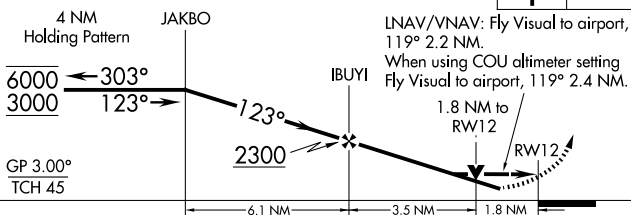
T For uncompensated Baro-VNAV systems, LNAV/VNAV NA below -16°C or above 54°C. Rwy 12 helicopter visibility reduction below ¼ SM NA. Circling Rwy 9 NA at night. When local altimeter setting not received, use COU altimeter setting and increase LPV DA to 1031 feet and all visibilities ¼ SM. Increase LNAV/VNAV DA to 1364 feet and all visibilities ½ SM. Increase all MDAs 80 feet and LNAV visibility Cat B/C/D ½ SM, and Circling visibility Cat A/B/C ¼ SM. Baro-VNAV and VDP NA when using COU altimeter setting.


MISSED APPROACH: Climb to 2800 direct FATPI and hold.

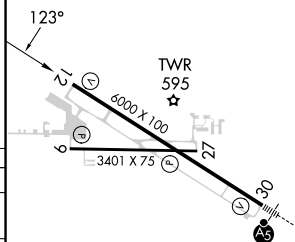
ASOS 133.625	MIZZU APP CON 124.375 353.925	JEFFERSON CITY TOWER ★ 125.6 (CTAF) 0	GND CON 121.7	UNICOM 122.95
------------------------	---	---	-------------------------	-------------------------




VGSI and RNAV glidepath not coincident
(VGSI Angle 3.50/TCH 64).



2800	FATPI
↑	



CATEGORY		A	B	C	D
LPV	DA	951-1½ 403 (500-1½)			
RNAV/ VNAV	DA	1284-2 736 (800-2)			1284-2¼ 736 (800-2¼)
RNAV	MDA	1260-1 712 (800-1)		1260-2 712 (800-2)	
 CIRCLING		1280-1 731 (800-1)		1320-2¼ 771 (800-2¼)	1560-3 1011 (1100-3)

