



Flight Procedures Cover Page	Task Action: P-NOTAM	Task Type: IAP	Estimated Chart Date: 06/16/2022	APWS Task ID: E7C3834578AE487EBBDE40B3A0E6FC1E	APWS Project ID: 5BAF831683C4423EAB966CB7E9328AB0
Procedure: RNAV (GPS) RWY 31 AMDT 1A		Enroute: NO	Specialist: Boone-walt, Rose		Agreement Number:
Airport ID: KBMT		Airport City: BEAUMONT		State: TX	
Facility ID:	Facility Type:	Flight Inspection Remark Type: New FC Slot			
<p>Procedure Comments: PNOTAM CLEARs FDC 2/5559 BMT IAP BEAUMONT MUNI, BEAUMONT, TX. CONTACT: JASON KRETSCHMER AJV-A421 LEAD: 405.954.4019</p> <p style="text-align: center;"><i>Digitally signed by</i> JASON KRETSCHMER Apr 15, 2022</p> <div style="text-align: right; margin-top: 200px;"> <p>04/15/2022</p>   </div>					

OLD

18144

WAAS CH 58241 W31A	APP CRS 308°	Rwy Idg 3934 TDZE 32 Apt Elev 32
--	------------------------	---

RNAV (GPS) RWY 31

BEAUMONT MUNI (BMT)

RNP APCH.

T Rwy 31 helicopter visibility reduction below 1 SM NA.
Straight-in Rwy 31 NA at night, Circling Rwy 31 NA at night.

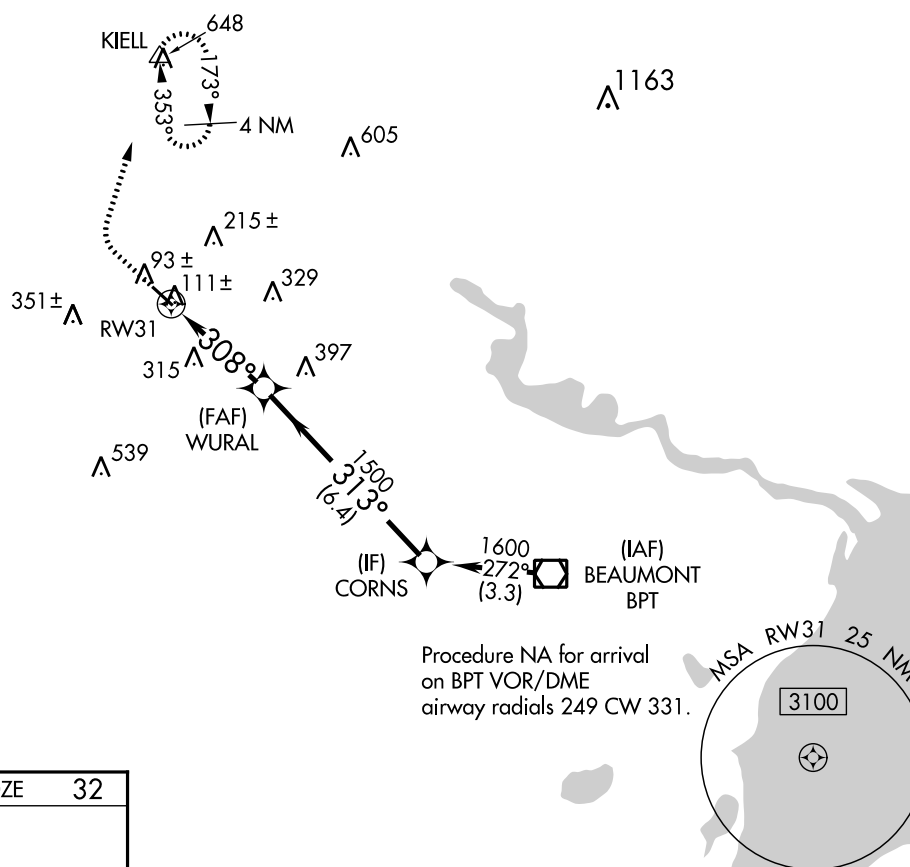
MISSED APPROACH: Climb to 500 then climbing right turn to 2000 direct KIELL and hold.

AWOS-3PT
118.425

HOUSTON APP CON
121.3 377.1

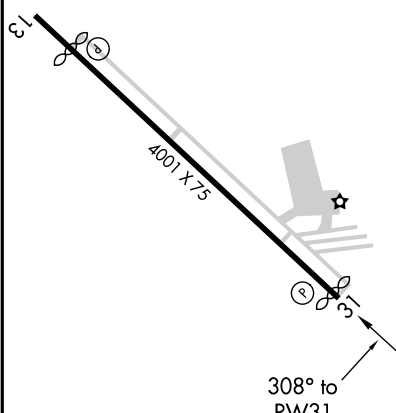
CLNC DEL
121.75

UNICOM
123.0 (CTAF) **L**

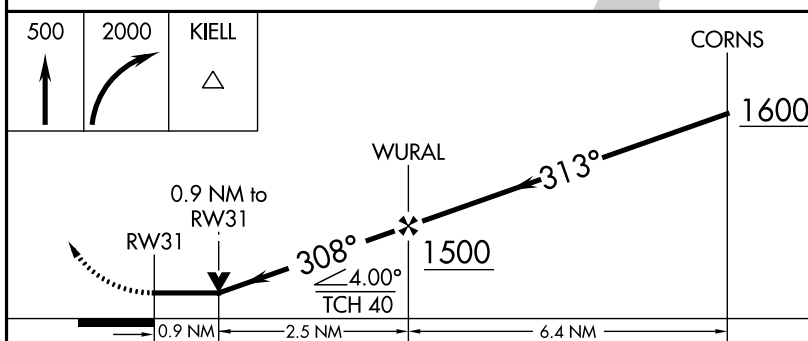



Procedure NA for arrival
on BPT VOR/DME
airway radials 249 CW 331.

ELEV	32		TDZE	32
------	----	--	------	----



REIL Rwy 13
MIRL Rwy 13-31 **L**



CATEGORY	A	B	C	D
LP MDA	380-1	348 (400-1)	NA	
LNAV MDA	440-1	408 (500-1)	NA	
 CIRCLING	560-1 528 (600-1)	620-1 588 (600-1)	NA	

BEAUMONT, TEXAS
Amdt 1 24MAY18

30°04'N-94°13'W

BEAUMONT MUNI (BMT)
RNAV (GPS) RWY 31

SC-5, 24 MAR 2022 to 21 APR 2022

SC-5, 24 MAR 2022 to 21 APR 2022

