

Flight Procedures Cover Page	Task Action: P-NOTAM	Task Type: IAP	Estimated Chart Date: 06/17/2021	APWS Task ID: E785F0A83F374D3E9DF7CE2851DF5D62	APWS Project ID: 3CDEBB7015D34D13ADCB97C1A4983C72
Procedure: RNAV (GPS) RWY 23 AMDT 1D		Enroute: NO	Specialist: Boone-walt, Rose		Agreement Number:
Airport ID: PAOR			Airport City: NORTHWAY		State: AK
Facility ID:	Facility Type:	Flight Inspection Remark Type:			
<div>Procedure Comments: PNOTAM CHART CIRCLING ICON</div> <div>CONTACT: JASON KRETSCHMER AJV-A421 LEAD: 405.954.4019</div> <div><div>Digitally signed by <b>JASON KRETSCHMER</b> Apr 12, 2021</div><div><div>QUALITY 38 CHECKED</div><div>QUALITY 8 CHECKED</div></div></div>					

WAAS CH <b>48924</b> <b>W23A</b>	APP CRS <b>232°</b>	Rwy Idg TDZE Apt Elev	<b>5100</b> <b>1719</b> <b>1720</b>
--	------------------------	-----------------------------	---

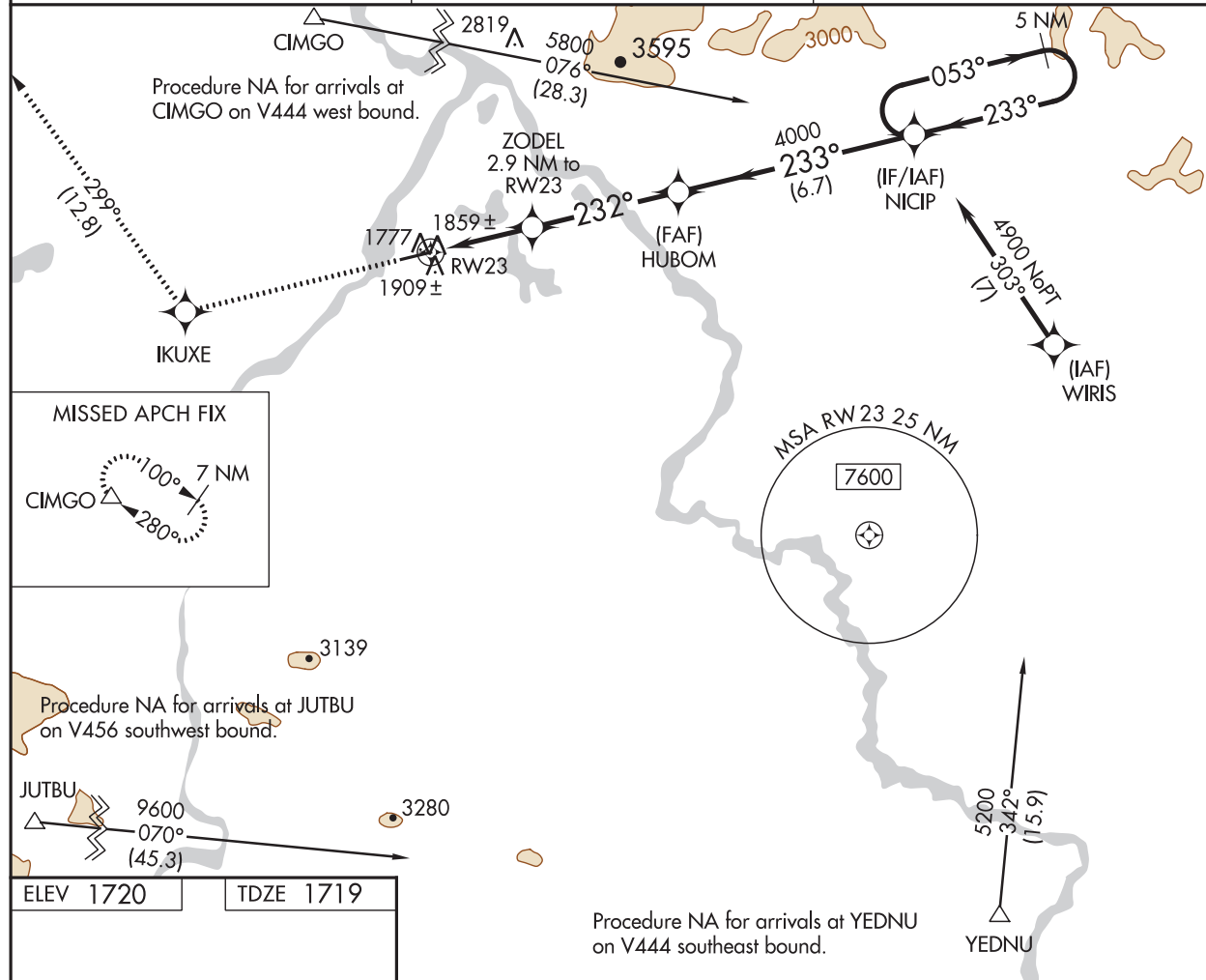
**OLD**

# RNAV (GPS) RWY 23

NORTHWAY (ORT)(PAOR)

When local altimeter setting not received, procedure NA. -38°C DME/DME RNP-0.3 NA. Helicopter visibility reduction below 3/4 SM NA.	<b>MISSED APPROACH:</b> Climb to 8000 direct IKUXE and on track 299° to CIMGO and hold, continue climb-in-hold to 8000.
---	---

ASOS <b>135.4</b>	ANCHORAGE CENTER <b>126.55 323.0</b>	NORTHWAY RADIO <b>123.6 (CTAF) 0</b>
----------------------	---	---



ELEV 1720 TDZE 1719		8000		IKUXE	tr 299°	CIMGO	NICIP		5 NM Holding Pattern
1804		232° to RWY 23		ZODEL 2.9 NM to RWY 23		HUBOM	053° → 4900		
5100 X 100		1.2 NM to RWY 23		1.2 NM to RWY 23		≤ 3.00° TCH 36'	233° ← 4900		
1.2		1.7 NM		4.2 NM		6.7 NM			
CATEGORY		A		B		C		D	
LP MDA		2120-1 401 (400-1)		2120-1 1/8 401 (400-1 1/8)					
LNAV MDA		2160-1 441 (500-1)		2160-1 3/8 441 (500-1 3/8)					
CIRCLING		2220-1 500 (500-1)		2220-1 1/2 500 (500-1 1/2)		2280-2 560 (600-2)			



