

Flight Procedures Cover Page	Task Action: P-NOTAM	Task Type: IAP	Estimated Chart Date: 09/09/2021	APWS Task ID: E748D0222E6D4C2CBC8892F537A78438	APWS Project ID: F16D2112E3204DF6A75BF89DD5ABB32C
Procedure: RNAV (GPS) RWY 27 AMDT 0B		Enroute: NO	Specialist: Lafferty, James		Agreement Number:
Airport ID: KVPZ			Airport City: VALPARAISO		State: IN
Facility ID:	Facility Type:	Flight Inspection Remark Type:			
<p>Procedure Comments:</p> <p>P-NOTAM</p> <p>This Cancels FDC 0/4286</p> <p>Order 8260.3, chapter 2, New Circling Criteria Applied</p> <p>Contact Dave Teffeteller at 202-267-5177</p>					




WAAS CH 86806 W27A	APP CRS 272°	Rwy Idg 6500 TDZE 770 Apt Elev 770
--	------------------------	---

OLD

RNAV (GPS) RWY 27
PORTER COUNTY RGNL (VPZ)

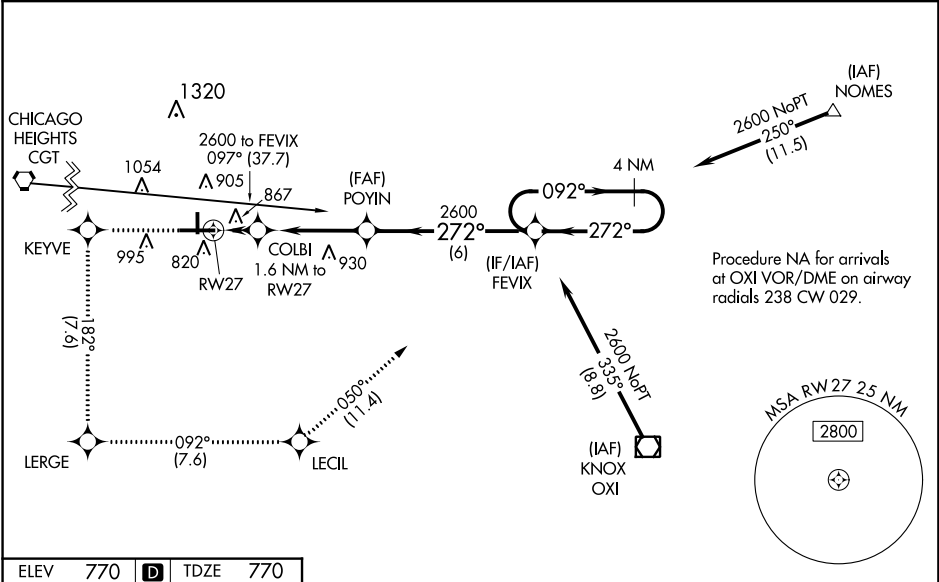
⚠ Baro-VNAV NA when using Lansing Muni altimeter setting. For uncompensated Baro-VNAV systems, procedure NA below -16°C (4°F) or above 54°C (130°F).
⚠ DME/DME RNP-0.3 NA. When local altimeter setting not received, use Lansing Muni altimeter setting and increase all DA 77 feet and all MDA 80 feet, and increase LPV and LNAV/VNAV all Cats, and Circling Cat C visibility ½ mile. For inoperative MALSR, increase LNAV Cat D visibility to 1¼, when using Lansing Muni altimeter setting increase LPV all Cats visibility to 1¼.

MALSR



MISSED APPROACH:
Climb to 2600 direct KEYVE and on track 182° to LERGE and on track 092° to LECIL and on track 050° to FEVIX and hold.

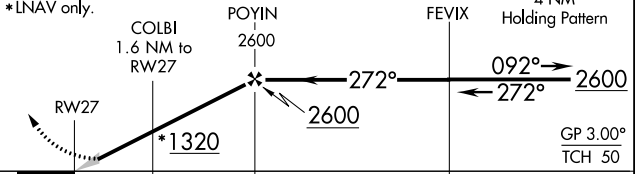
ASOS 125.875	SOUTH BEND APP CON ★ 132.05 257.8	CLNC DEL 120.525	UNICOM 122.725 (CTAF) 0
------------------------	---	----------------------------	-----------------------------------



ELEV **770** **D** TDZE **770**

2600	KEYVE	LERGE	LECIL	FEVIX	VGSI and descent angles not coincident.
↑	✧	✧	✧	✧	
	tr 182°	tr 092°	tr 050°		

***LNAV only.**



CATEGORY	A	B	C	D
LPV DA	1020-½		250 (300 -½)	
LNAV/VNAV DA	1201-1		431 (500 -1)	
LNAV MDA	1180-½	410 (500 -½)	1180-¾	1180-1
	490 (500-1)	530 (600-1)	530 (600-1½)	410 (500-1)
CIRCLING	1260-1	1300-1	1300-1½	1360-2
	490 (500-1)	530 (600-1)	530 (600-1½)	590 (600-2)

HIRL Rwy 9-27 **0**
MIRL Rwy 18-36 **0**
REIL Rws 9, 18 and 36 **0**

