

Flight Procedures Cover Page	Task Action: P-NOTAM	Task Type: IAP	Estimated Chart Date: 02/22/2024	APWS Task ID: E70BBE29034E4C8C9A032931C52D731F	APWS Project ID: EF90DACCDEC44701BE9B9549B4AF23C9
Procedure: RNAV (GPS) Z RWY 9 AMDT 0E		Enroute: NO	Specialist: Boone-walt, Rose		Agreement Number:
Airport ID: KGCD			Airport City: JOHN DAY		State: OR
Facility ID:	Facility Type:	Flight Inspection Remark Type:			
<div>Procedure Comments: Processed IAW Technical Support Group (AJF-17) Memo dated 07/07/2021, Subject: Guidance for Procedural Changes Requiring Flight Inspection/Validation  CONTACT: DAVID M. DANNER AJV-A421 LEAD: 405.954.5077</div> <div><div>QUALITY 9 CHECKED BEGUE</div><div><div>QUALITY 32 CHECKED</div><div>Digitally signed by <b>PABLO ORTIZ-JR</b> Oct 30, 2023</div></div></div>					

WAAS  
CH **73010**  
**W09A**

APP CRS  
**091°**

Rwy Idg  
TDZE **3669**  
Apt Elev **3703**

OLD

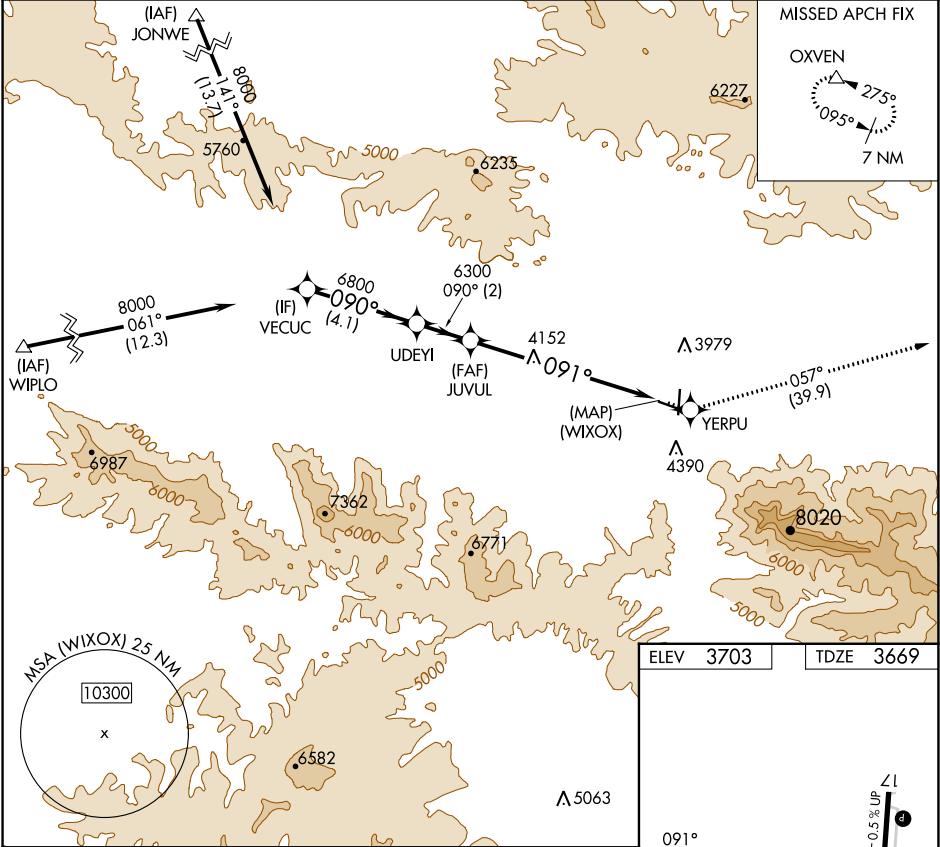
RNAV (GPS) Z RWY 9

GRANT COUNTY RGNL/OGILVIE FLD (GCD)

When local altimeter setting not received, procedure NA.  
DME/DME RNP-0.3 NA. Helicopter visibility reduction  
below ¾ SM NA.

MISSED APPROACH: Climb to 12000 direct YERPU  
and on track 057° to OXVEN and hold, continue  
climb-in-hold to 12000.

AWOS-3 <b>118.375</b>	SEATTLE CENTER <b>128.15 257.75</b>	UNICOM <b>122.8 (CTAF) 0</b>
--------------------------	--	---------------------------------



VECUC		UDEYI	JUVUL	12000	YERPU	OXVEN
8000		6800	6300	↑	✱	△
GP 3.40° TCH 54		6300	091°	VGSI and RNAV glidepath not coincident (VGSI Angle 3.00/TCH 45).		
4.1 NM		2 NM	7.1 NM	(WIXOX)		
CATEGORY	A	B	C	D		
LPV DA	4269-2 600 (600-2)			NA		

REIL Rwy 17 and 9

MRL Rwy 9-27 and 17-35