

Flight Procedures Cover Page	Task Action: FLIGHT CHECK	Task Type: IAP	Estimated Chart Date: 09/05/2024	APWS Task ID: E6B477886ABF4E12B9236B29081D40CE	APWS Project ID: 389D977980BD4D369B97C2ED0B2D4B77
Procedure: HI - ILS Y OR LOC Y RWY 7 AMDT 8C		Enroute: NO	Specialist: Owens, Westley		Agreement Number:
Airport ID: KTOL			Airport City: TOLEDO		State: OH
Facility ID:	Facility Type:	Flight Inspection Remark Type: New FC Slot			
<div>Procedure Comments:</div> <div>ACTIVE DATA USED FOR KTOL AIRPORT AND RWY AND ALL ASSOCIATED NAVAIDS.</div> <div>UPDATED -3 FORMS WITH ALL REQUESTED CHANGES.</div> <div>CONTACT: ERIC SUSKI (405) 954-7331</div> <div><div>Digitally signed by</div><div>ERIC N SUSKI</div><div>Jul 16, 2024</div></div> <div><div>QUALITY 41 CHECKED</div><div>QUALITY 30 CHECKED</div></div>					

LOC I-TOL 109.7	APP CRS 072°	Rwy Idg 10599 TDZE 683 Apt Elev 684
---------------------------	------------------------	--

HI - ILS Y OR LOC Y RWY 7

TOLEDO EXPRESS (TOL)

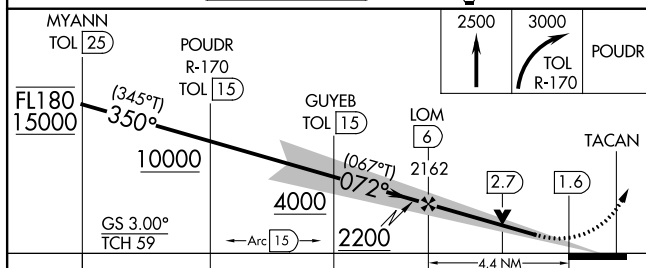
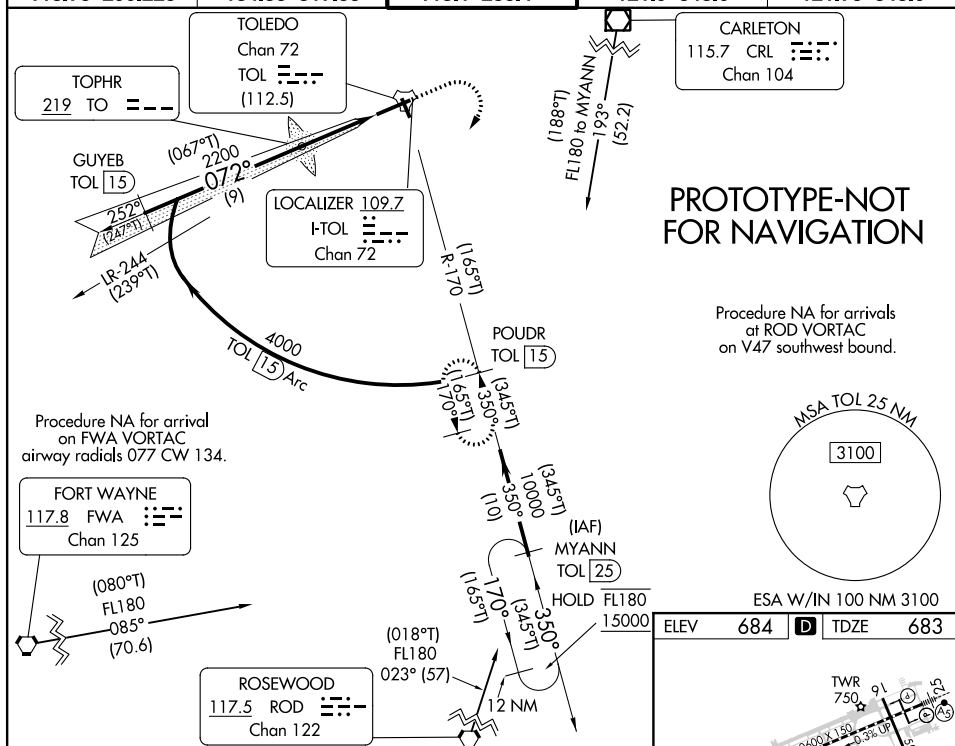
DME required.

- ▼ *For inop ALS, increase S-ILS 7 Cat E RVR to 4000, visibility to $\frac{3}{4}$ SM and
- ▲ NA **For inop ALS, increase S-LOC 7 Cat E RVR to 6000, visibility $1\frac{1}{4}$ SM.
- ASR



MISSED APPROACH: Climb to 3000 then left turn via TOL TACAN R-170 to POWDR 1.5 DME and hold.

ATIS 118.75 290.225	TOLEDO APP CON 134.35 317.55	ASHEVILLE TOWER 118.1 285.4	GND CON 121.9 348.6	CINC DEL 121.75 348.6
-------------------------------	--	---------------------------------------	-------------------------------	---------------------------------



CATEGORY	C	D	E
S-ILS 7*	886/18	203 (300- $\frac{1}{2}$)	
S-LOC 7**	1140/45	457 (500- $\frac{7}{8}$)	
C CIRCLING	1300- $1\frac{3}{4}$ 616 (700- $1\frac{3}{4}$)	1400- $2\frac{1}{4}$ 716 (800- $2\frac{1}{4}$)	1400- $2\frac{1}{2}$ 716 (800- $2\frac{1}{2}$)

TDZ/CL Rwy 7
HIRL Rwy 7-25
MIRL Rwy 16-34
REIL Rwy 16 and 34

TOLEDO, OHIO

23334

OLD

HI-ILS Y or LOC Y RWY 7

LOC I-TOL 109.7	APCH CRS 072°	Rwy Idg 10,599' TDZE 683 Arpt Elev 684
---------------------------	-------------------------	---

[USAF]

EUGENE F KRANZ TOLEDO EXPRESS (KTOL)

DME required

- When ALS inop, increase CAT E RVR to 40, vis to $\frac{1}{2}$.
 • When ALS inop, increase CAT E RVR to 60, vis to $\frac{1}{2}$.

ALS F-2

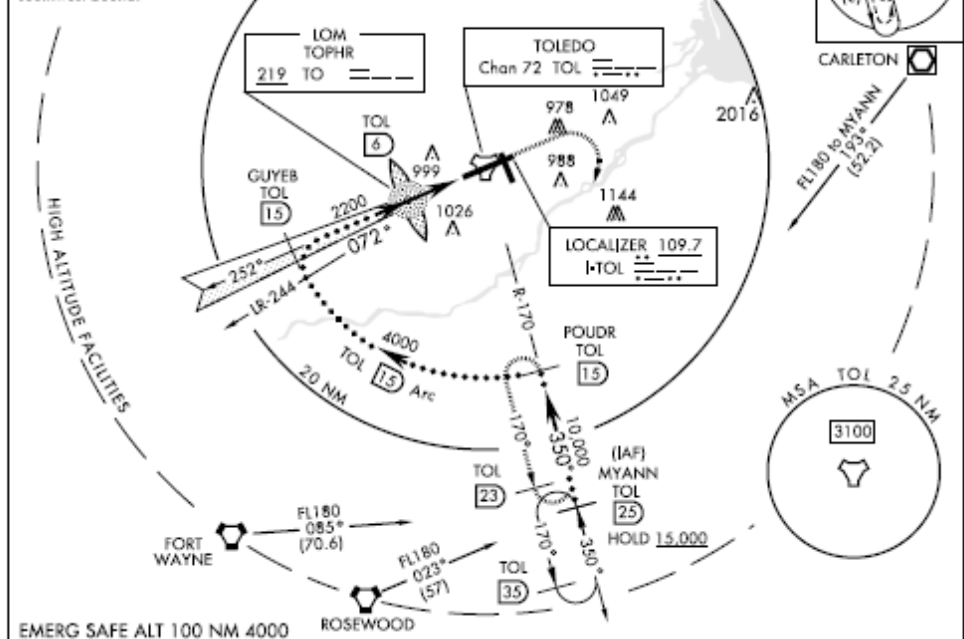


MISSED APPROACH: Climb to 2500, then climbing right turn to 3000 on TOL TACAN R-170 to POWDR/15 DME and hold.

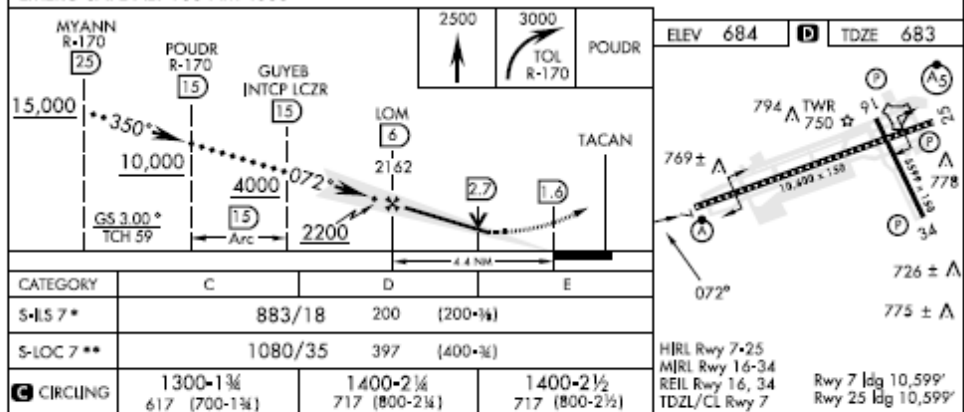
ATIS 118.75 290.225	TOLEDO APP CON 126.1 317.55	TOLEDO TOWER 118.1 285.4	GND CON 121.9 348.6	CINC DEL 121.75 348.6	ASR
-------------------------------	---------------------------------------	------------------------------------	-------------------------------	---------------------------------	-----

Procedure NA for arrival on FWA VORTAC airway radials 077 CW 134.

Procedure NA for arrival at ROD VORTAC on V47 southwest bound.



EMERG SAFE ALT 100 NM 4000

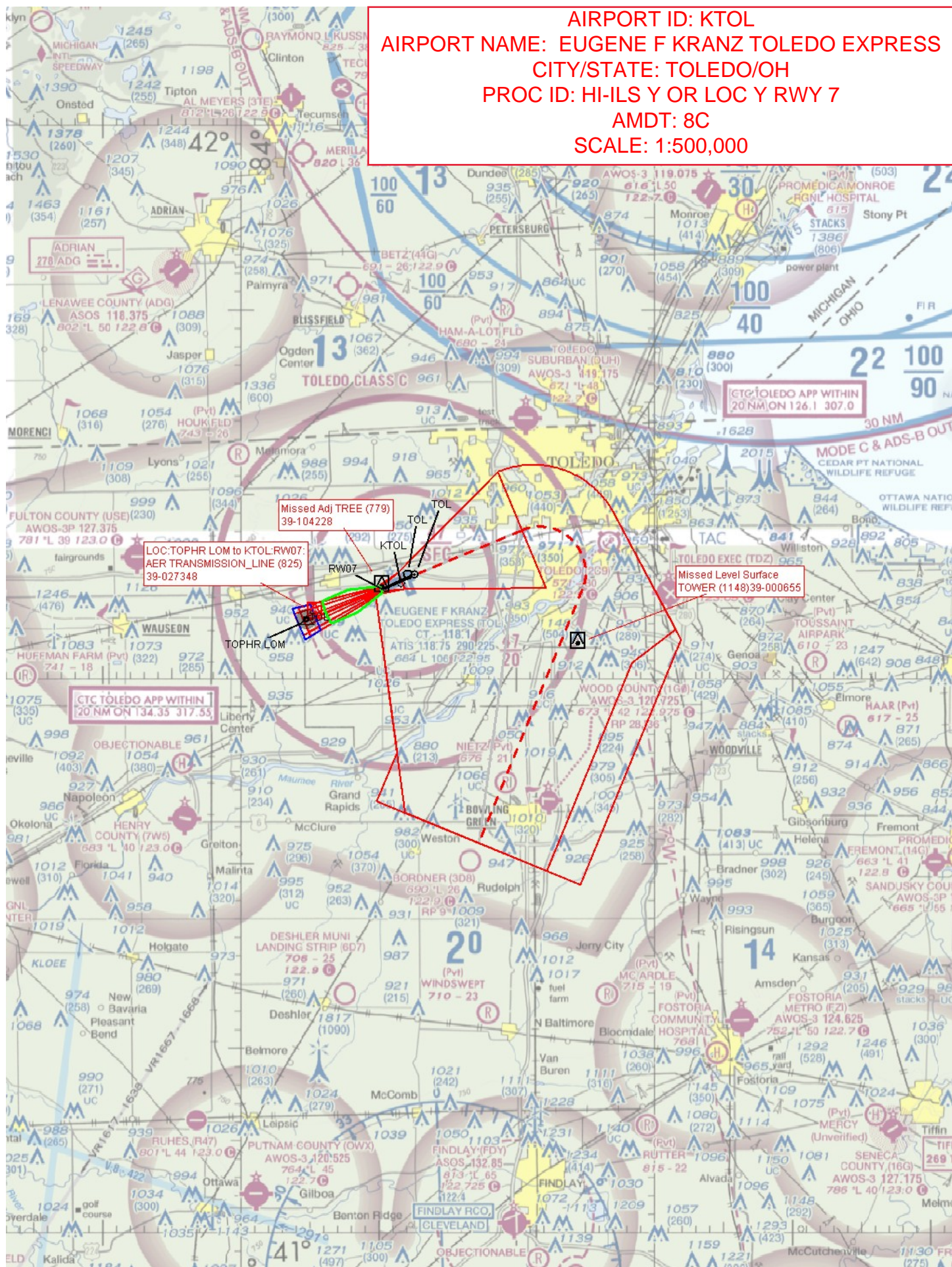


HI-ILS Y or LOC Y RWY 7

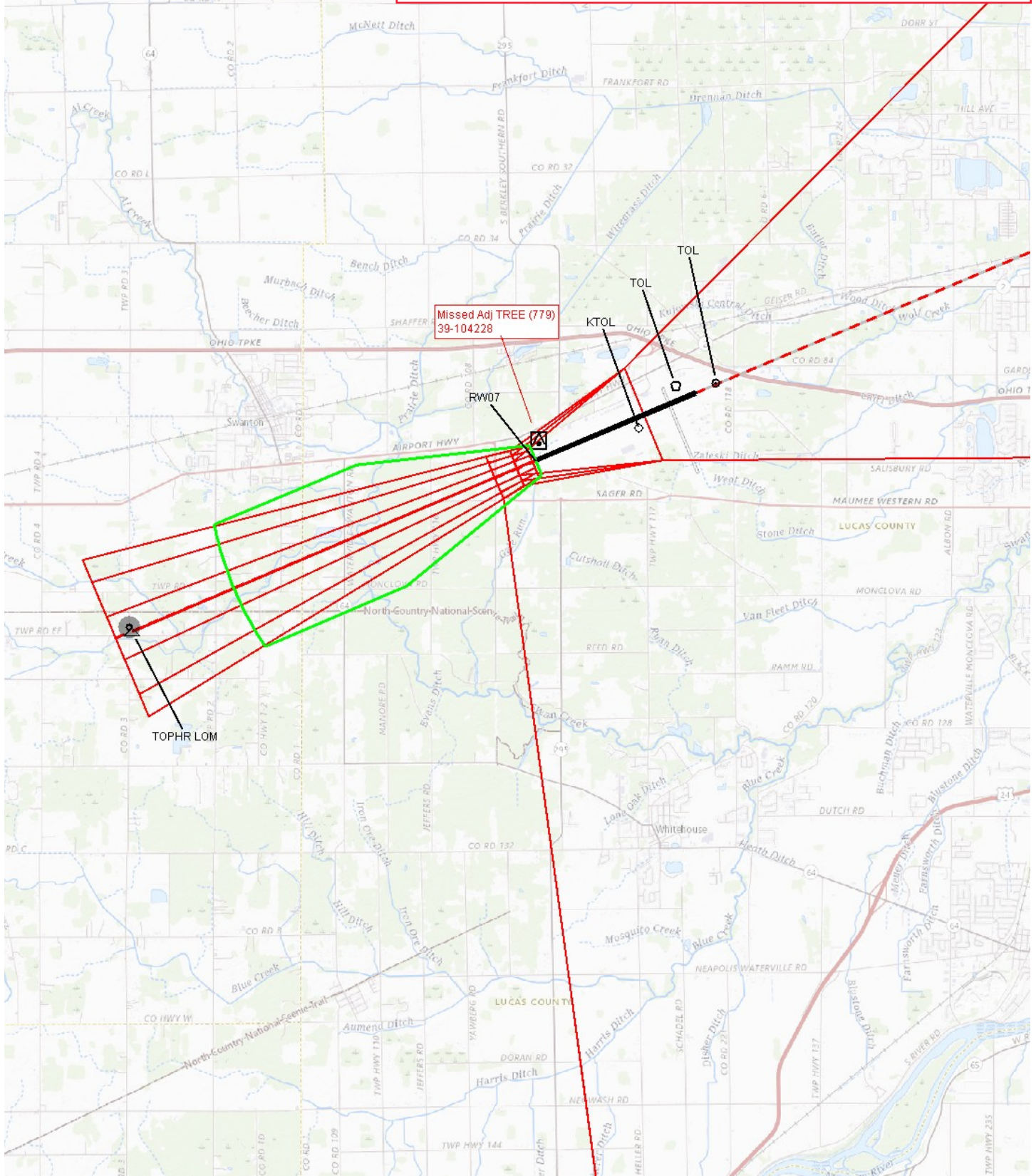
EC-2, 22 FEB 2024 to 21 MAR 2024

EC-2, 22 FEB 2024 to 21 MAR 2024

AIRPORT ID: KTOL
AIRPORT NAME: EUGENE F KRANZ TOLEDO EXPRESS
CITY/STATE: TOLEDO/OH
PROC ID: HI-ILS Y OR LOC Y RWY 7
AMDT: 8C
SCALE: 1:500,000



AIRPORT ID: KTOL
AIRPORT NAME: EUGENE F KRAVZ TOLEDO EXPRESS
CITY/STATE: TOLEDO/OH
PROC ID: HI-ILS Y OR LOC Y RWY 7
AMDT: 8C
SCALE: 1:100,000
ILS FINAL



AIRPORT ID: KTOL
AIRPORT NAME: EUGENE F KRANZ TOLEDO EXPRESS
CITY/STATE: TOLEDO/OH
PROC ID: HI-ILS Y OR LOC Y RWY 7
AMDT: 8C
SCALE: 1:100,000
LOC FINAL

