

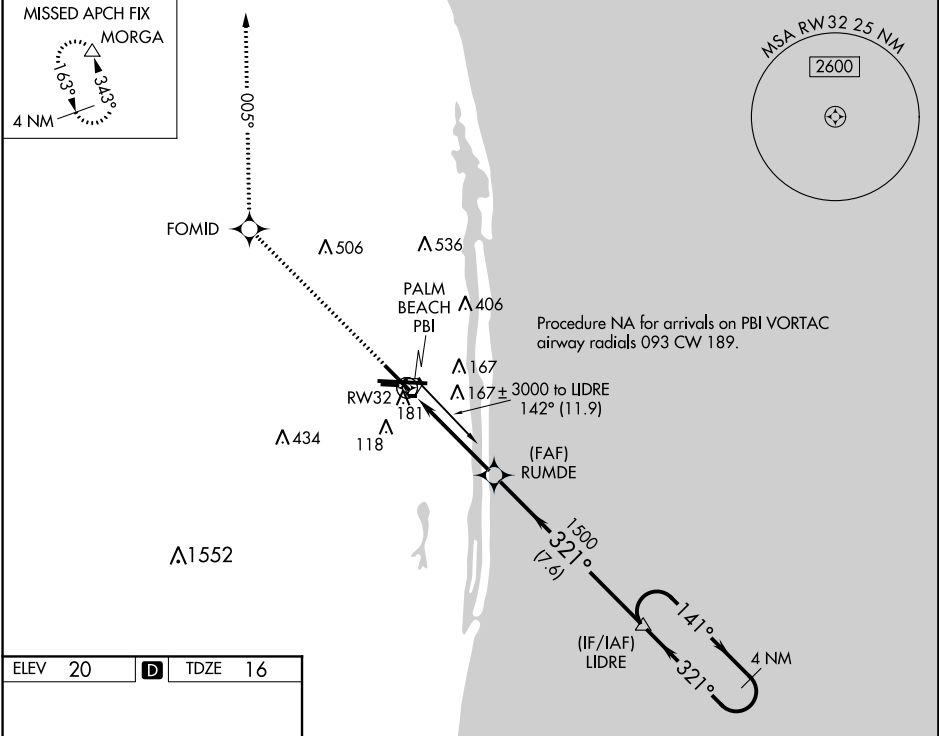
Flight Procedures Cover Page	Task Action: Amendment	Task Type: IAP	Estimated Chart Date: 04/23/2020	APWS Task ID: E647235CB02B4CFABA01DB7B3179C36E	APWS Request ID: C4DC59676625404E91FAFEB6BA88ECE2
Procedure: RNAV (GPS) Y RWY 32 AMDT 2B		Enroute: NO	Specialist: Campbell, Colin		Agreement Number:
Airport ID: KPBI	Airport Name: PALM BEACH INTL		Airport City: WEST PALM BEACH		State: FL
Facility ID:	Facility Type:	Flight Inspection Remark Type:			
<div>Procedure Comments:</div> <div>P-NOTAM</div> <div>NEW CIRCLING AREAS</div> <div>PROCESSED IAW AIRCRAFT OPERATIONS GROUP (AJW-33) MEMO, OCTOBER 3, 2018, SUBJECT:</div> <div>FLIGHT INSPECTION REVIEW NOT REQUIRED.</div> <div>DAVE DANNER, 405-954-5077</div> <div>SN 2/13/20</div> <div>QUALITY 41 CHECKED DNAC</div> <div>QUALITY 6 CHECKED</div>					

▼

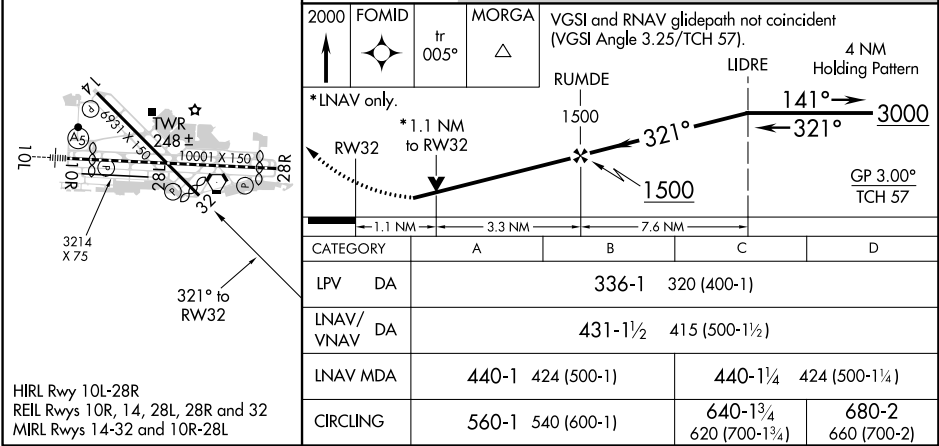
For uncompensated Baro-VNAV systems, LNAV/VNAV NA below -15°C (5°F) or above 48°C (118°F). DME/DME RNP-0.3 NA. Helicopter visibility reduction below ¾ SM NA.

MISSED APPROACH: Climb to 2000 direct FOMID and via track 005° to MORG A and hold.

D-ATIS 123.75	PALM BEACH APP CON 128.3 317.4	PALM BEACH TOWER 119.1 257.8	GND CON 121.9 284.6	CLNC DEL 121.6 284.6
------------------	-----------------------------------	---------------------------------	------------------------	-------------------------



ELEV 20	D	TDZE 16
---------	---	---------



Map from KPBI ILS OR LOC RWY 10L showing new circling areas and controlling obstacles.

Map showing the KPBI ILS and LOC RWY 10L area, including new circling areas and controlling obstacles. The map displays the airport, surrounding terrain, and various landmarks.

Legend:

- 7. FINAL - 229 MSL TOWER
- 8. STEP - 116 MSL TREE
- 11. CIRC CAT A/B - 248 MSL CONTROL TOWER
- 12. CIRC CAT C - 366 MSL BLDG
- 13. CIRC CAT D - 475 MSL TOWER

Map from KPBI ILS OR
LOC RWY 10L showing
new circling areas and
controlling obstacles.

KPBI - PALM BEACH INTL
WEST PALM BEACH, FL
ILS OR LOC RWY 10L AMDT 27
LOC FINAL 1:100,000
7. FINAL - 229 MSL TOWER
8. STEP - 116 MSL TREE
11. CIRC CAT A/B - 248 MSL CONTROL
TOWER
12. CIRC CAT C - 366 MSL BLDG
13. CIRC CAT D - 475 MSL TOWER