

Flight Procedures Cover Page	Task Action: Abbreviated Amendment	Task Type: IAP	Estimated Chart Date: 05/21/2020	APWS Task ID: E60D26E9FB6A4B26B4B9663BD28F00A5	APWS Request ID: 3F83352288344CAF85DAE15C6F4CCD08
Procedure: HI-LOC/DME BC RWY 35L, ORIG-C		Enroute: NO	Specialist: Fields, Deanna		Agreement Number:
Airport ID: KLBB	Airport Name: LUBBOCK PRESTON SMITH INTL		Airport City: LUBBOCK		State: TX
Facility ID:	Facility Type:	Flight Inspection Remark Type:			
<p>Procedure Comments:</p> <p>Abbrev Amdt for Note Change due to ODALS decomm</p> <p>PROCESSED IAW AIRCRAFT OPERATIONS GROUP (AJW-33) MEMO, OCTOBER 3, 2018, SUBJECT: FLIGHT INSPECTION REVIEW NOT REQUIRED.</p> <p>CONTACT: MARK ADAMS, SUB-TEAM MANAGER, IFP TEAM 2, 405.954.9946 (OR) JULIE MORGAN, MANAGER, AJV-A41, INSTRUMENT FLIGHT PROCEDURES TEAM 2, 405.954.8568.</p>					

Digitally signed by
MARK D ADAMS
Mar 18, 2020

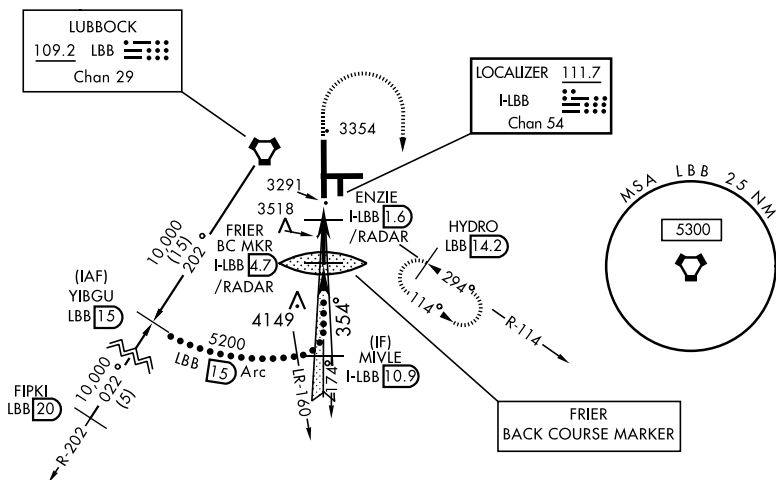
QUALITY
22
CHECKED
2.25.2020
BD

QUALITY
41
CHECKED
DNC

HI-LOC/DME BC RWY 35L

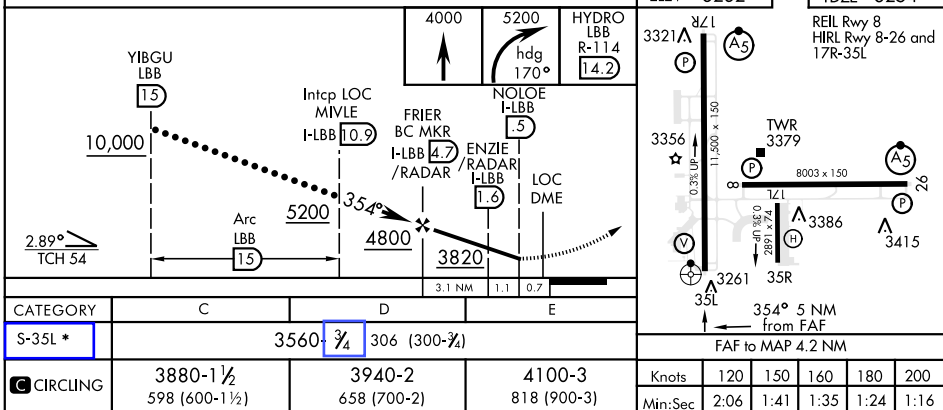
LOC I-LBB 111.7 Chan 54	APCH CRS 354°	Rwy Idg 11,500 TDZE 3254 Arpt Elev 3282	JAL-241 [USAF]	LUBBOCK PRESTON SMITH INTL (KLBB)
<p>* When ALS inop, increase all CAT vis to $\frac{3}{4}$ mile.</p> <p>Use I-LBB DME when on Localizer course</p>			ODALS	MISSED APPROACH: Climb to 4000, then climbing right turn to 5200 on Hdg 170° and on LBB VORTAC R-114 to HYDRO INT/LBB 14.2 DME and hold.

ATIS 125.3 270.275	LUBBOCK APP CON 119.2 351.8	LUBBOCK TOWER 120.5 239.3	GND CON 121.9 348.6	CLNC DEL 125.8 281.55
------------------------------	---------------------------------------	-------------------------------------	-------------------------------	---------------------------------



BACKCOURSE

EMERG SAFE ALT 100 NM 7300



HI-LOC/DME BC RWY 35L