



Flight Procedure Tracking Form		Action: AMENDMENT	Task Type: IAP	Date Open: 10/01/2019	Task #: 2019100128342801001	Request #: 20191001283428	
Procedure: APPROACH VOR A AMDT 1B			Airport ID: KYIP	Airport: WILLOW RUN		Reimbursable #: NO	
City: DETROIT	ST: MI	GPS #:	Estimated Chart Date: 03/26/2020		FICO #:		
Fac ID: N/A		Fac. Type:		Specialist: ALEXANDER MILES			
Procedure Review							
	Rec'd	Rel'd	Full Name	Comments			
Lead:	10/01/2019						
QA:							
Liaison:							
Procedure Comments:			ENROUTE-NON	Remark Type: INFORMATION			
P-NOTAM 9/8822			P-NOTAM DOES NOT AFFECT CODING				
NEW CIRCLING AREAS							
PROCESSED IAW AIRCRAFT OPERATIONS GROUP (AJW-33) MEMO, OCTOBER 3, 2018, SUBJECT: FLIGHT INSPECTION REVIEW NOT REQUIRED. DAVE DANNER, 405-954-5077							

DETROIT, MICHIGAN

AL-467 (FAA)

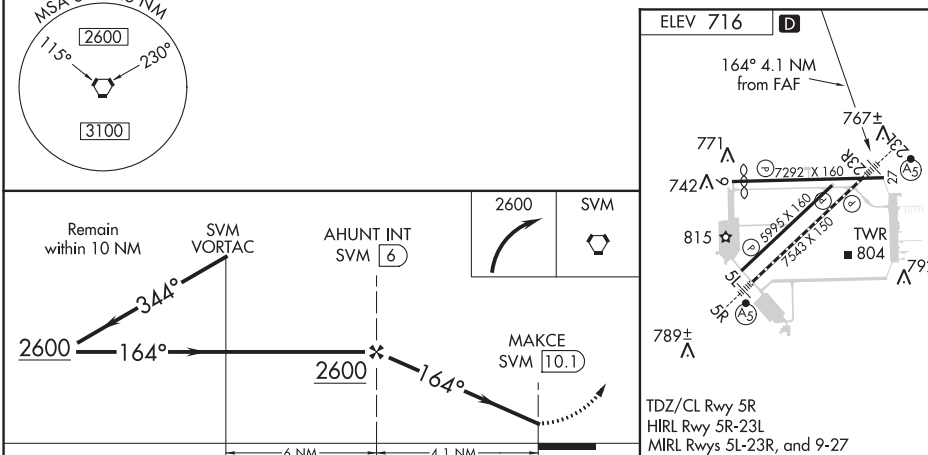
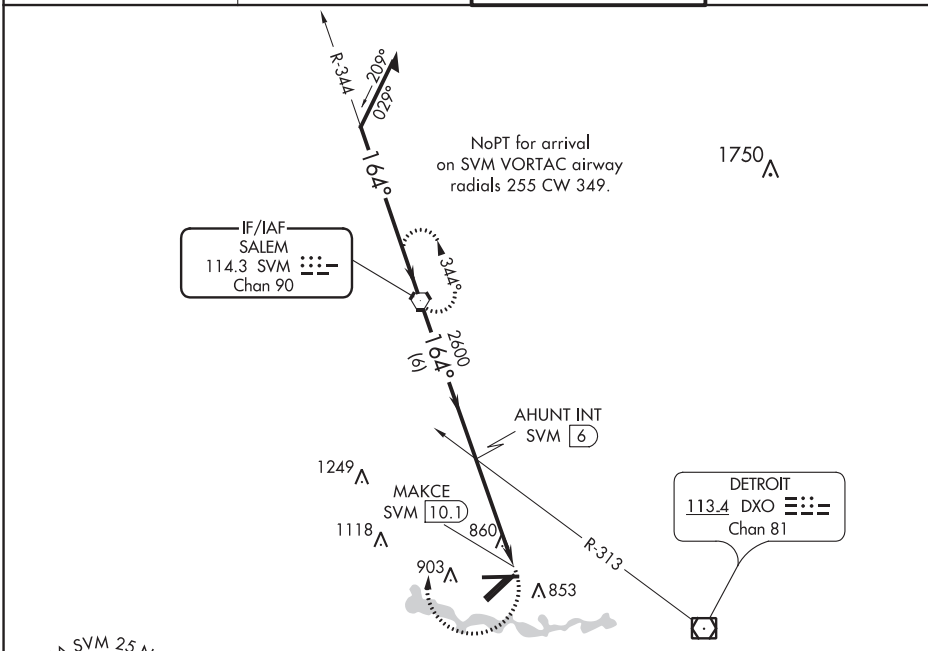
19171

VORTAC SVM 114.3 Chan 90	APP CRS 164°	Rwy Idg TDZE Apt Elev N/A N/A 716
--	------------------------	---

OLD

VOR-A
WILLOW RUN (YIP)

<p>V Helicopter visibility reduction below $\frac{3}{4}$ SM NA.</p>		<p>MISSED APPROACH: Climbing right turn to 2600 direct SVM VORTAC and hold.</p>	
<p>ATIS 127.425</p>	<p>DETROIT APP CON 118.95 284.0</p>	<p>WILLOW RUN TOWER 125.275 256.9</p>	<p>GND CON 119.975</p>



CATEGORY	A	B	C	D	FAF to MAP 4.1 NM					
CIRCLING	1420-1	704 (800-1)	1420-2 704 (800-2)	1420-2¼ 704 (800-2¼)	Knots	60	90	120	150	180
					Min:Sec	4:06	2:44	2:03	1:38	1:22

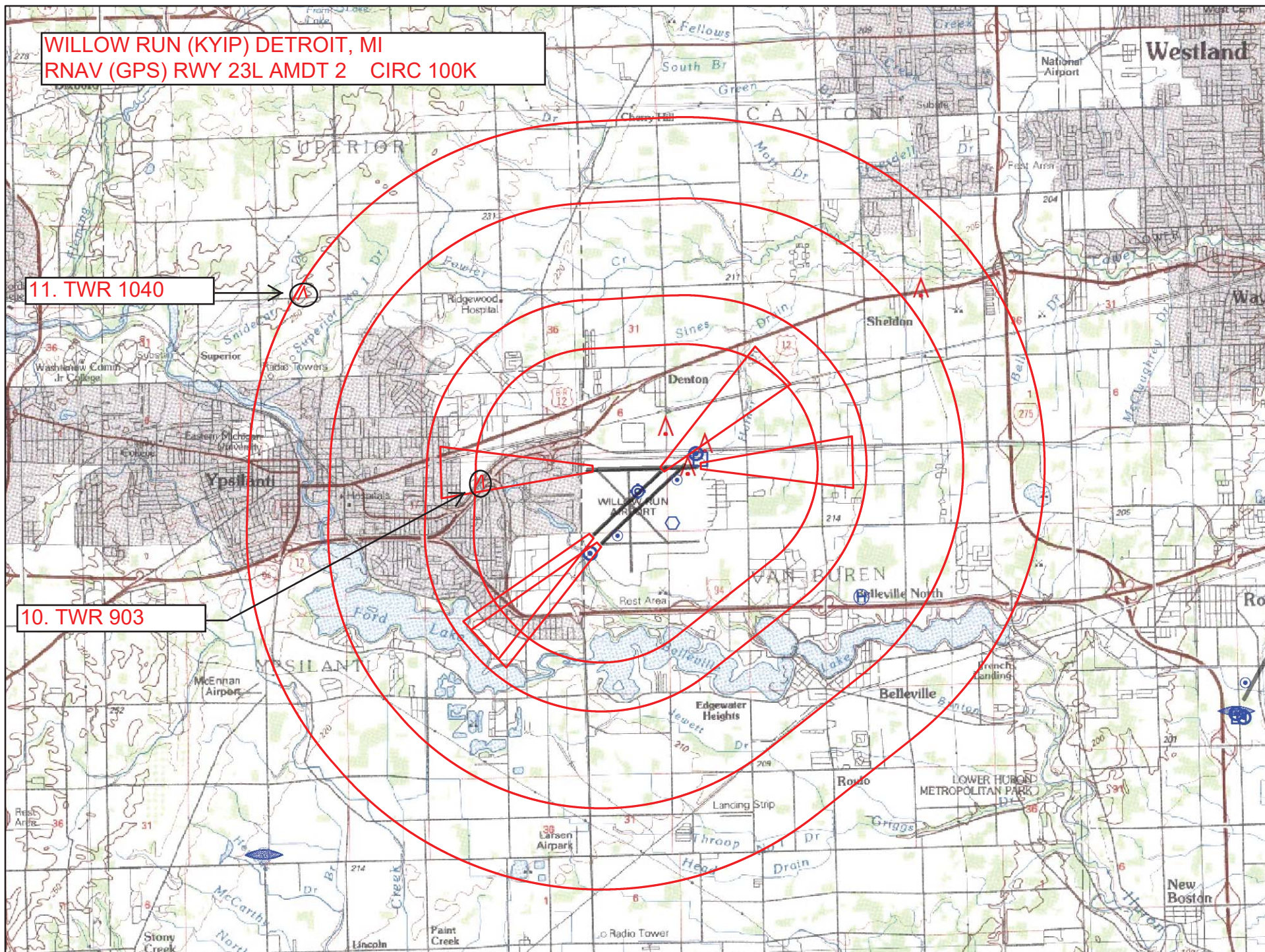
DETROIT, MICHIGAN
Amdt 1A 25JUN15

42°14'N-83°32'W

WILLOW RUN (YIP)
VOR-A

EC-1, 10 OCT 2019 to 07 NOV 2019

EC-1, 10 OCT 2019 to 07 NOV 2019



MAP FROM KYIP RNAV (GPS) RWY 23L SHOWING NEW CIRCLING AREAS AND CONTROLLING OBSTACLES

STANDARD INSTRUMENT APPROACH PROCEDURE DATA RECORD	
--	--

	PART - A OBSTRUCTION DATA
--	---------------------------

1. APP SEGMENT		FROM		TO		OBSTRUCTION		COORDINATES		ELEV. MSL		ROC		ALT. ADJUSTMENTS		MIN. ALT.	
INITIAL		KUPNE		PLYMT		1. TWR (26-000724)		422522.00N/0832739.00W		1250 (5D)		1000		AT150		2400	
						2. TERRAIN		422624.16N/0832918.46W		932 (900)				AS1000		1900	
INTERMEDIATE		PLYMT		FELUS		3. TWR (26-026988)		422308.46N/0832616.82W		1014 (2C)		500		AT486		2000	
						4. TERRAIN		422310.66N/0832727.47W		755 (800)				AS1000		1800	
FINAL: LPV		FELUS		RW23L		5. TREE (KYIP0075)		421455.92N/0833052.24W		763 (1A)		34:1		MA21		959/249	
FINAL: LNAV/VNAV		FELUS		RW23L		6. TREE (KYIPT1260)		421506.77N/0833126.79W		813 (1A)		23.73:1				974/264	
FINAL: LNAV		FELUS		RW23L		7. TWR (26-026738)		421637.08N/0832743.73W		832 (1B)		250				1100	

FAA Form 8260 - 9 / April 2006 (Computer Generated)

PAGE 1 OF 1 PAGES

EXCERPT FROM KYIP RNAV (GPS) RWY 23L SHOWING NEW CIRCLING AREAS AND CONTROLLING OBSTACLES

TL# 16-02 01/07/2016