

Flight Procedures Cover Page	Task Action: FLIGHT CHECK	Task Type: IAP	Estimated Chart Date: 10/02/2025	APWS Task ID: E52EEE6CD43E4DC3A97746B954B21FE3	APWS Project ID: 73AD3E95FA804EB3A275149AB8B79F66
Procedure: RNAV (GPS) Y RWY 20R AMDT 4		Enroute: NO	Specialist: Armentrout, Britney		Agreement Number:
Airport ID: KBNA			Airport City: NASHVILLE		State: TN
Facility ID:	Facility Type:	Flight Inspection Remark Type: New FC Slot			
<div>Procedure Comments: ACTIVE AIRNAV DATA USED.  CONTACT RAKE MCGRAW AJV-A422 405-954-8711.</div> <div><div>QUALITY 41 CHECKED</div><div>QUALITY 34 CHECKED</div></div>					

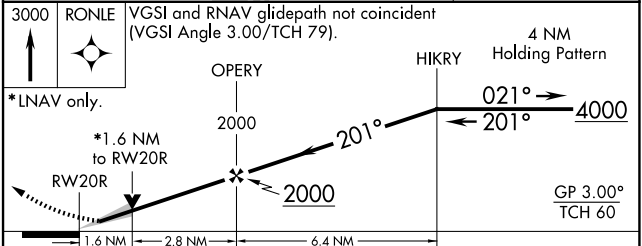
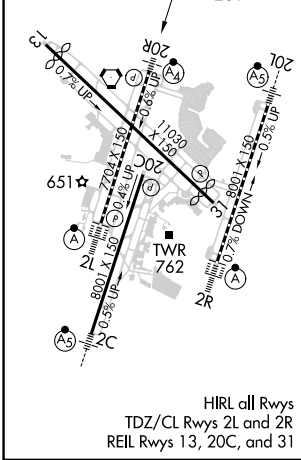
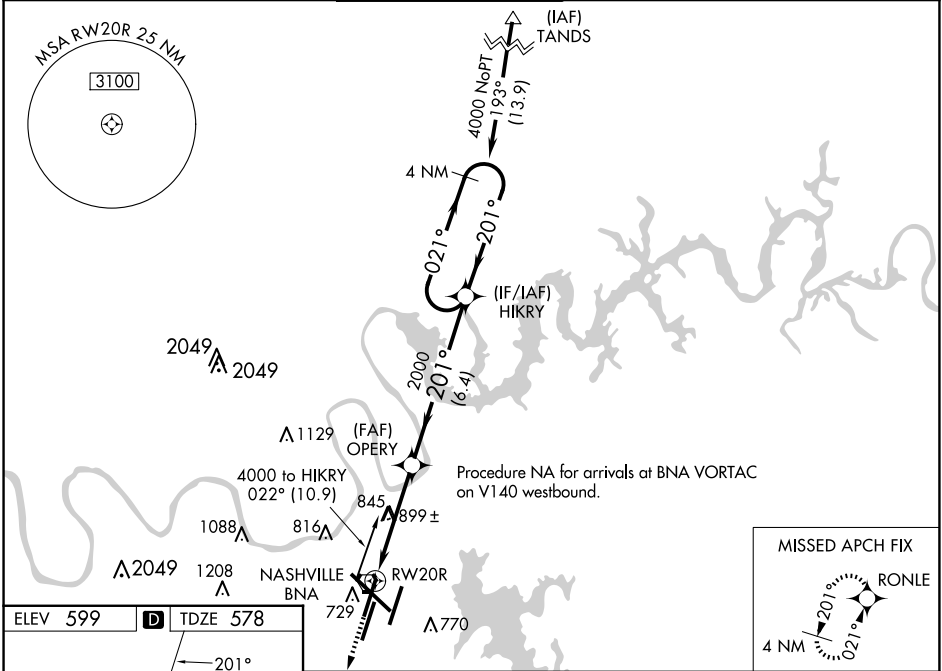
RNAV (GPS) Y RWY 20R  
NASHVILLE INTL (BNA)

WAAS CH <b>78411</b> <b>W20A</b>	APP CRS <b>201°</b>	Rwy Idg TDZE <b>578</b> Apt Elev <b>599</b>
--	------------------------	---

⚠ For uncompensated Baro-VNAV systems, LNAV/VNAV NA below -11°C (13°F) or above 54°C (130°F). Use of FD or AP providing RNAV track guidance required during simultaneous operations. Simultaneous approach authorized with Rwy 20L. LNAV procedure NA during simultaneous operations. DME/DME RNP-0.3 NA. For inop ALS, increase LNAV/VNAV Cat D visibility to 1½ SM and LNAV Cats C and D visibility to 1¼ SM.

MALSF 	MISSED APPROACH: Climb to 3000 direct RONLE and hold.
-----------	---

D-ATIS <b>135.1</b>	NASHVILLE APP CON <b>118.4 360.7</b>	NASHVILLE TOWER <b>118.6 257.8</b>	GND CON <b>121.9 348.6</b>	CLNC DEL <b>126.05</b>	CPDLC
------------------------	---	---------------------------------------	-------------------------------	---------------------------	-------

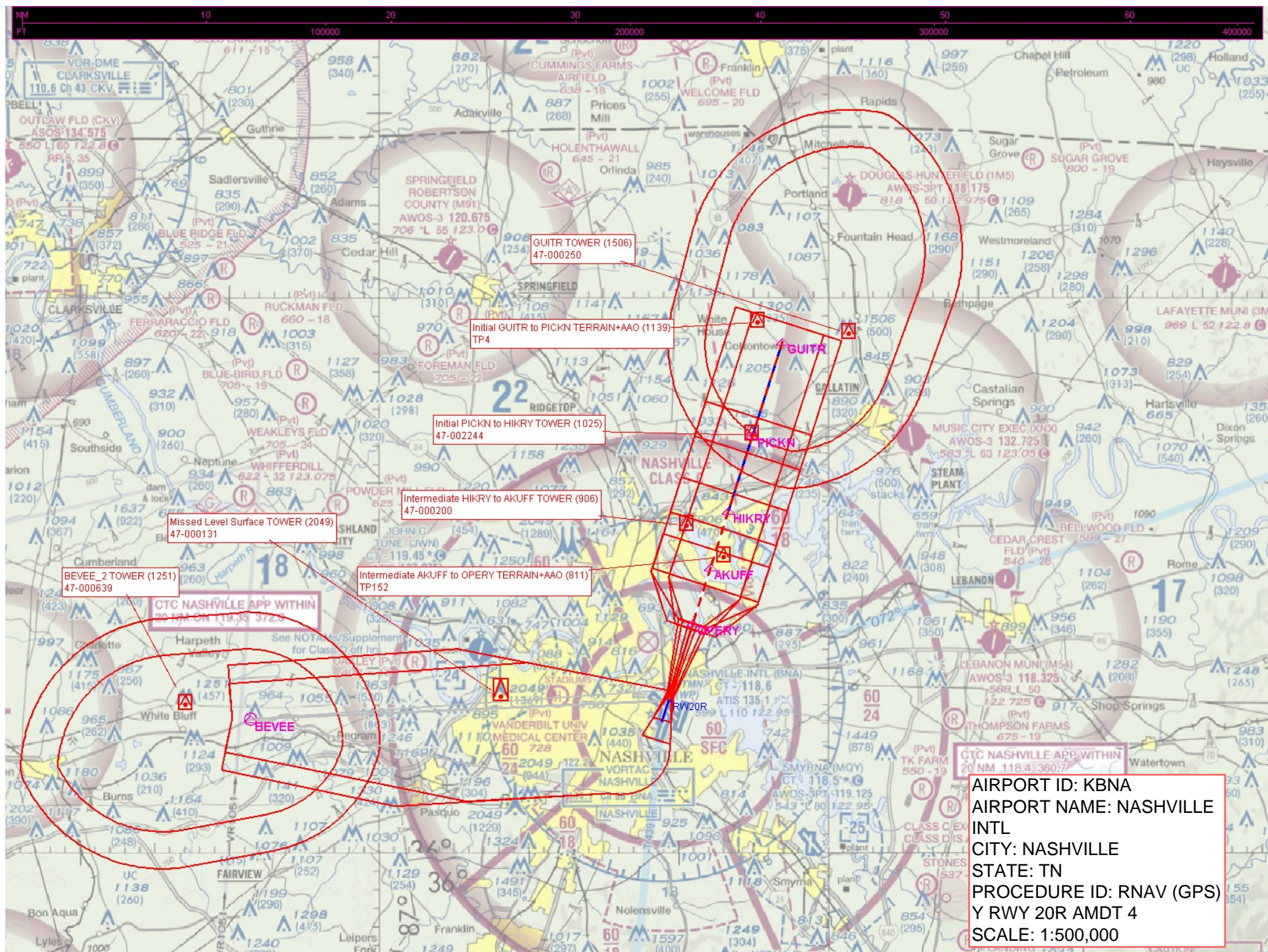


CATEGORY	A	B	C	D
LPV DA	778/40 200 (200-¾)			
LNAV/VNAV DA	1038-1¾ 460 (500-1¾)			
LNAV MDA	1160/40	582 (600-¾)	1160-1¾	582 (600-1¾)
CIRCLING	1160-1	561 (600-1)	1200-1¾ 601 (700-1¾)	1380-2½ 781 (800-2½)

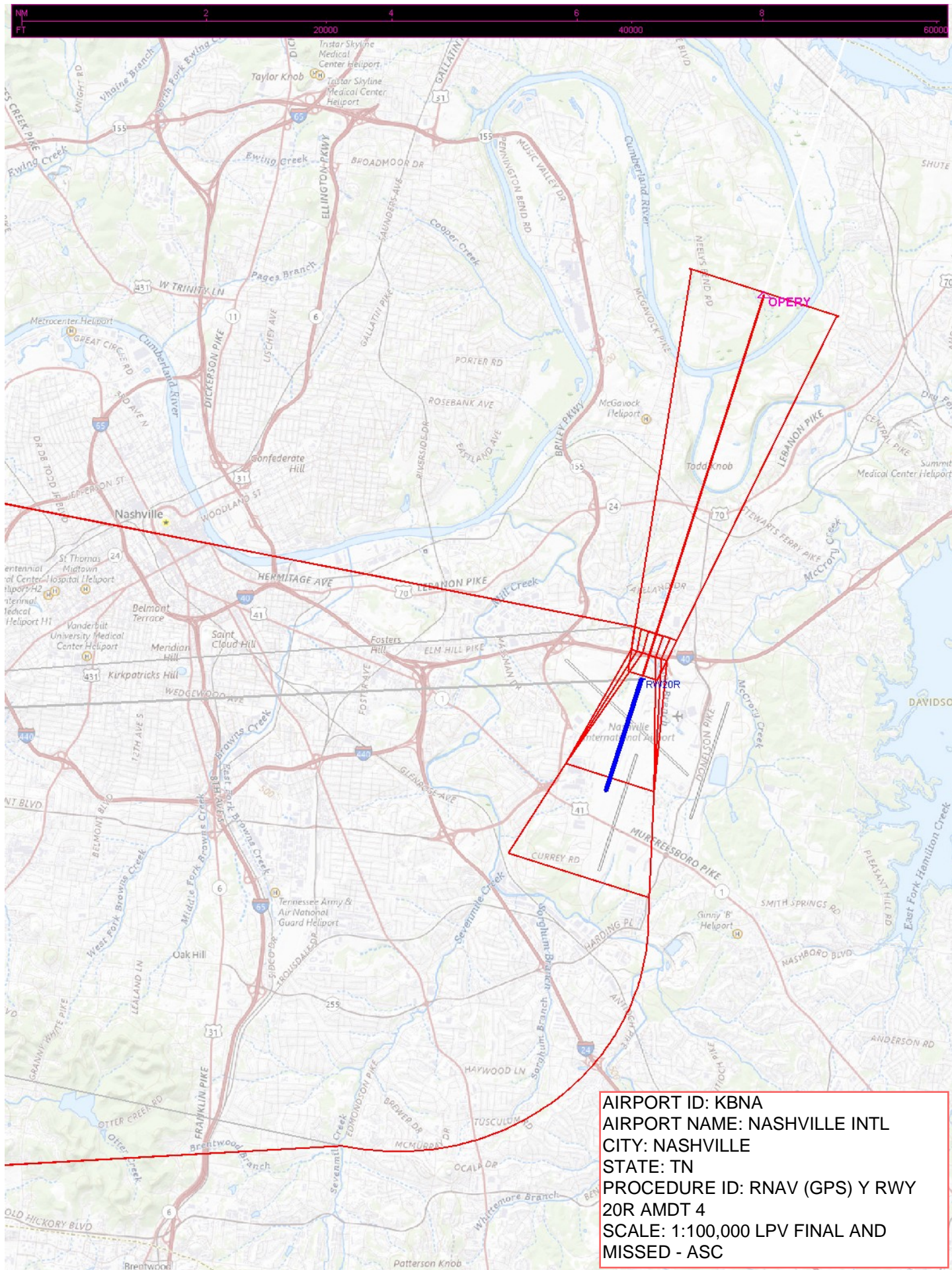
SE-1, 20 FEB 2025 to 20 MAR 2025

SE-1, 20 FEB 2025 to 20 MAR 2025

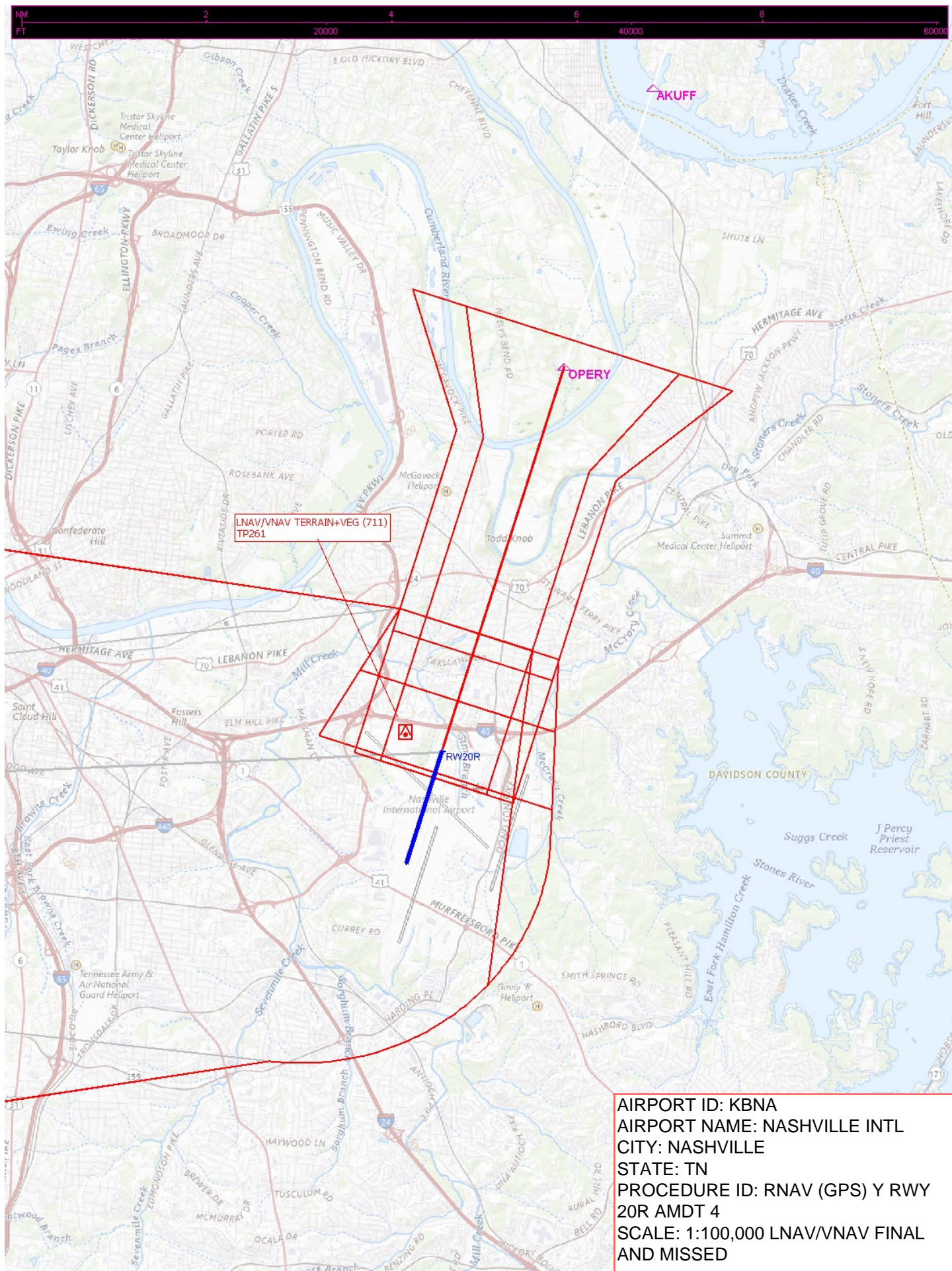














NM  
FT

6

50000

LNAV OPERY to MARJG TOWER (850)  
47-024931

LNAV MARJG to KBNA:RW20R:AER TERRAIN+VEG (711)  
TP261

OPERY

MARJG

AIRPORT ID: KBNA  
AIRPORT NAME: NASHVILLE INTL  
CITY: NASHVILLE  
STATE: TN  
PROCEDURE ID: RNAV (GPS) Y RWY 20R  
AMDT 4  
SCALE: 1:100,000 LNAV FINAL AND  
MISSED



