

Flight Procedures Cover Page	Task Action: FLIGHT CHECK	Task Type: IAP	Estimated Chart Date: 01/27/2022	APWS Task ID: E4B9339246E747738F8563A490CF740B	APWS Project ID: 7168F11B9259468FAD29C14A939A0D23
Procedure: RNAV (GPS) RWY 6 AMDT 2		Enroute: NO	Specialist: Martinelli, Tara		Agreement Number:
Airport ID: KERI			Airport City: ERIE		State: PA
Facility ID:	Facility Type:	Flight Inspection Remark Type: New FC Slot			
<div>Procedure Comments: ERI VORMON PROJECT</div> <div>CRC REMAINDER CHANGE FROM 257F1277 TO F3EEB2CE</div> <div>CONTACT DON LANIER: AJV-A431, 405-954-8242.</div> <div>QUALITY 10 CHECKED</div>					

WAAS CH 77612 W06A	APP CRS 064°	Rwy Idg 7501 TDZE 732 Apt Elev 732
----------------------------------------	------------------------	---------------------------------------------------------------

RNAV (GPS) RWY 6

ERIE INTL/TOM RIDGE FLD (ERI)

RNP APCH - GPS.

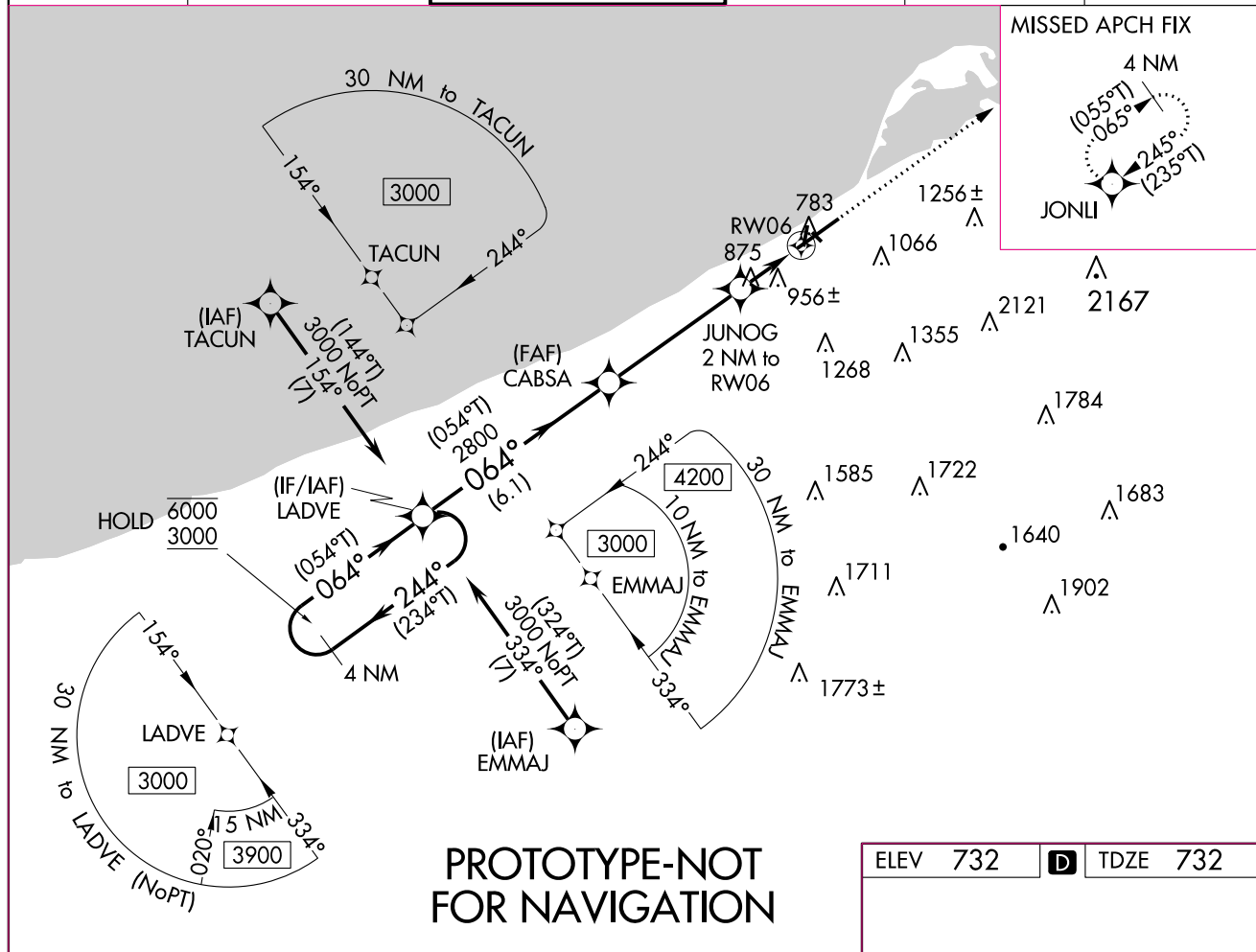
⚠ Circling NA southeast of Rwy 6-24. Circling Rwy 2, 20 NA at night. For uncompensated Baro-VNAV systems, LNAV/VNAV NA below -15°C or above 54°C. For inop ALS, increase LNAV Cats C and D visibility to 1 $\frac{3}{8}$ SM.

MALSR

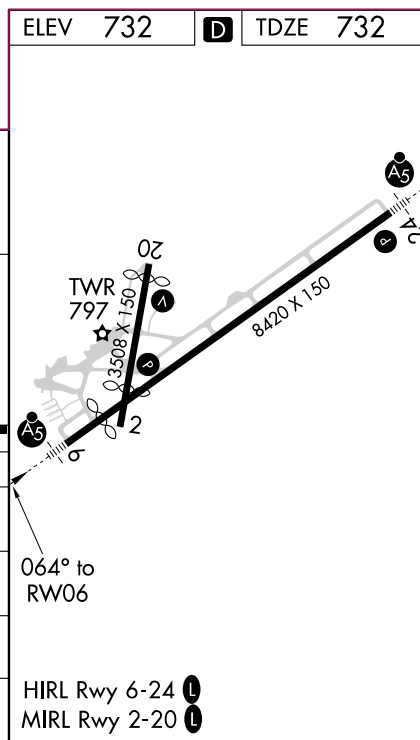


MISSED APPROACH: Climb to 3200 direct JONLI and hold.

ATIS 120.35	BUFFALO APP CON★ 121.0 257.8	ERIE TOWER★ 118.1 (CTAF) 0 257.8	GND CON 121.9	CLNC DEL 126.8	UNICOM 122.95
-----------------------	----------------------------------------	--------------------------------------------	-------------------------	--------------------------	-------------------------



4 NM Holding Pattern LADVE		3200 JONLI	
6000 3000		JUNOG 2 NM to RW06	
GP 3.00° TCH 55		1.4 NM to RW06	
6.1 NM		0.6 NM	
CATEGORY	A	B	D
LPV DA	982/24 250 (300-1/2)		
LNAV/VNAV DA	1256/55 524 (600-1 1/4)		
LNAV MDA	1220/24	488 (500-1/2)	1220/50 488 (500-1)
C CIRCLING	1220-1	488 (500-1)	1220-1 1/2 488 (500-1 1/2) 1340-2 608 (700-2)




OLD

ERIE, PENNSYLVANIA

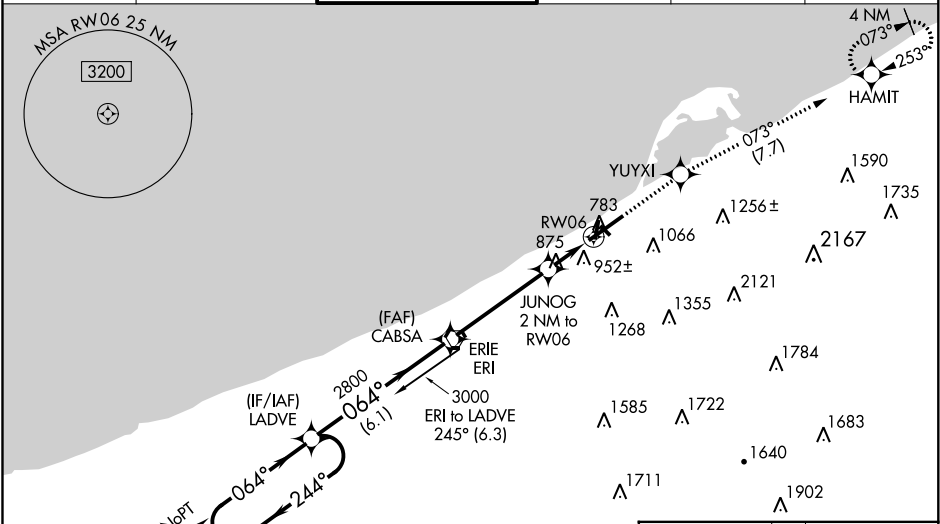
21112

WAAS CH 77612 W06A	APP CRS 064°	Rwy Idg 7501 TDZE 732 Apt Elev 732
----------------------------------------	------------------------	---------------------------------------------------------------

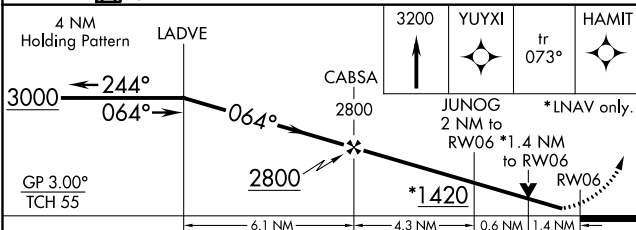
RNAV (GPS) RWY 6
ERIE INTL/TOM RIDGE FLD (ERI)

RNAV 1-GPS or RADAR required for procedure entry. RNP APCH.		 MALSR	MISSED APPROACH: Climb to 3200 direct YUYXI and on track 073° to HAMIT and hold.
<p>▼ Baro-VNAV NA when using Ashtabula, OH altimeter setting. For uncompensated Baro-VNAV systems, LNAV/VNAV NA below -19°C (-2°F) or above 54°C (130°F).</p> <p>▲ Circling Rwy 2, 20 NA at night. Rwy 2, 20 helicopter visibility reduction below 1 SM NA. Rwy 6 helicopter visibility reduction below RVR 4000 NA. VDP NA with Ashtabula, OH altimeter setting. When local altimeter setting not received, use Ashtabula, OH altimeter setting and increase all DA 96 feet, all MDA 100 feet and increase LNAV/VNAV all Cats visibility to 1 1/8 SM, LNAV Cats C and D visibility to 1 1/4 SM, Circling Cat C visibility to 2 1/4 SM and Cat D visibility to 2 1/2 SM. For inop MALSR, when using Ashtabula, OH altimeter setting, increase LPV all Cats visibility to RVR 6000, LNAV/VNAV all Cats visibility to 2 1/4 SM and LNAV Cats A and B visibility to RVR 5000.</p>			

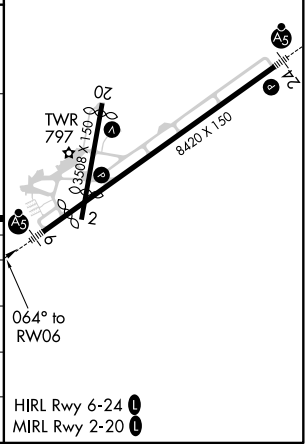
ATIS 120.35	BUFFALO APP CON★ 121.0 257.8	ERIE TOWER★ 118.1 (CTAF) 0 257.8	GND CON 121.9	CLNC DEL 126.8	UNICOM 122.95
-----------------------	----------------------------------------	--------------------------------------------	-------------------------	--------------------------	-------------------------



(IAF) JEFFERSON JFN	(IF/AF) LADVE	(FAF) CABSAS	ERIE ERI	ELEV 732	TDZE 732
---------------------	---------------	--------------	----------	----------	----------



CATEGORY	A	B	C	D
LPV DA	982/40 250 (300-3/4)			
LNAV/VNAV DA	1255/60 523 (600-1 1/4)			
LNAV MDA	1220/40	488 (500-3/4)	1220/50	488 (500-1)
CIRCLING	1320-1 588 (600-1)	1340-1 608 (700-1)	1380-1 3/4 648 (700-1 3/4)	1380-2 648 (700-2)



ERIE, PENNSYLVANIA
Amdt 1B 24MAY18

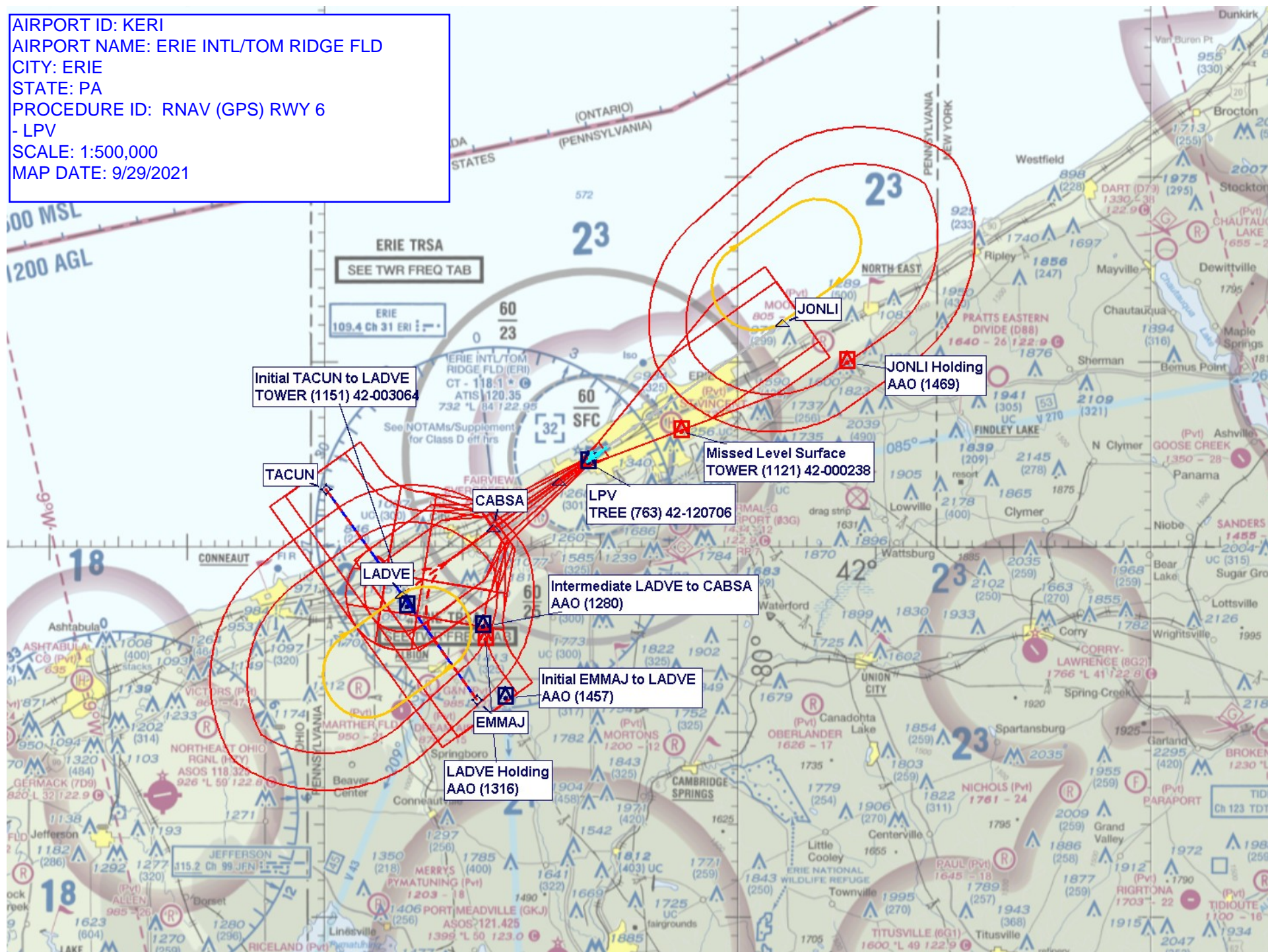
42°05'N-80°10'W

ERIE INTL/TOM RIDGE FLD (ERI)
RNAV (GPS) RWY 6

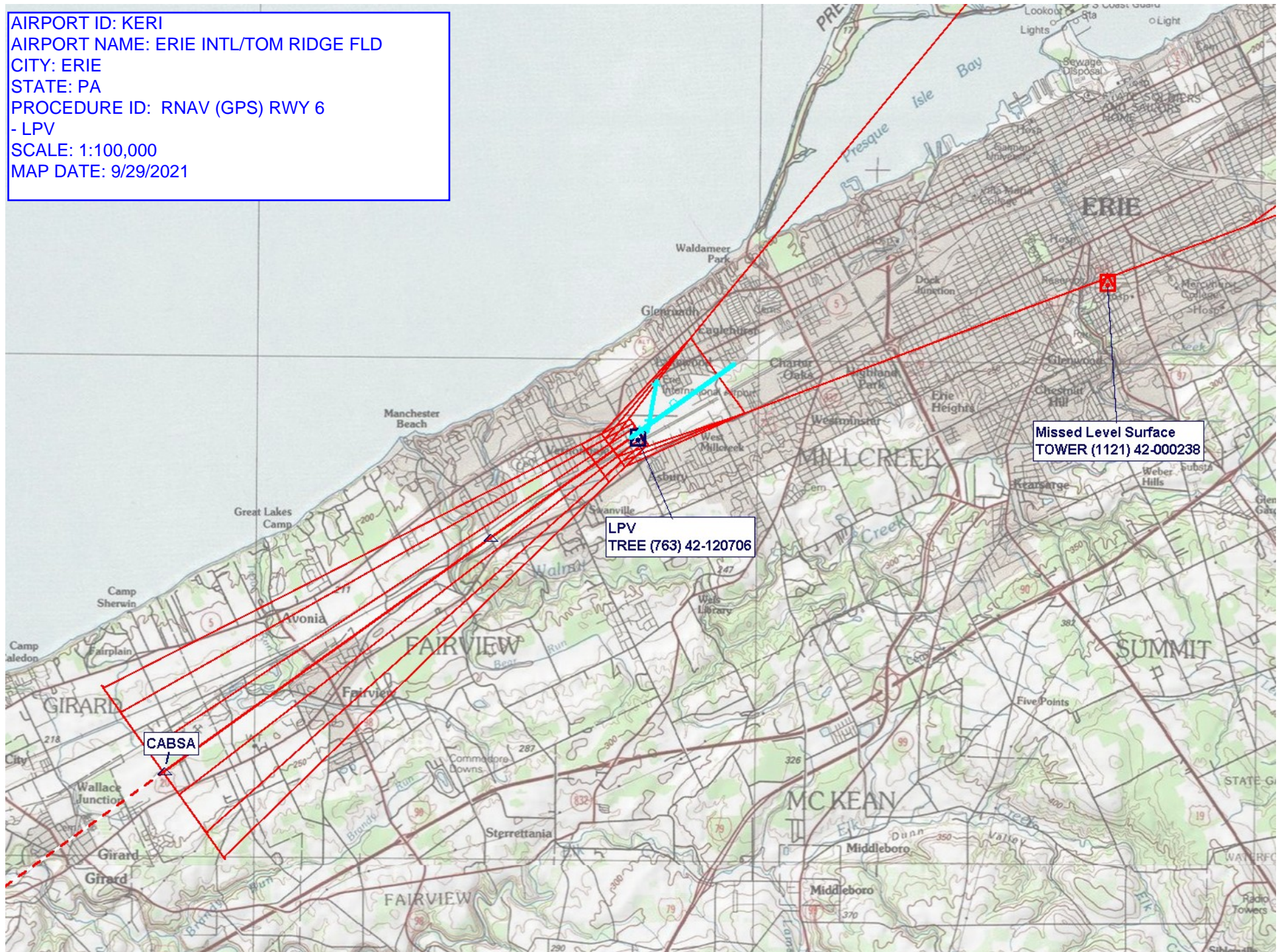
NE-4, 12 AUG 2021 to 09 SEP 2021

NE-4, 12 AUG 2021 to 09 SEP 2021

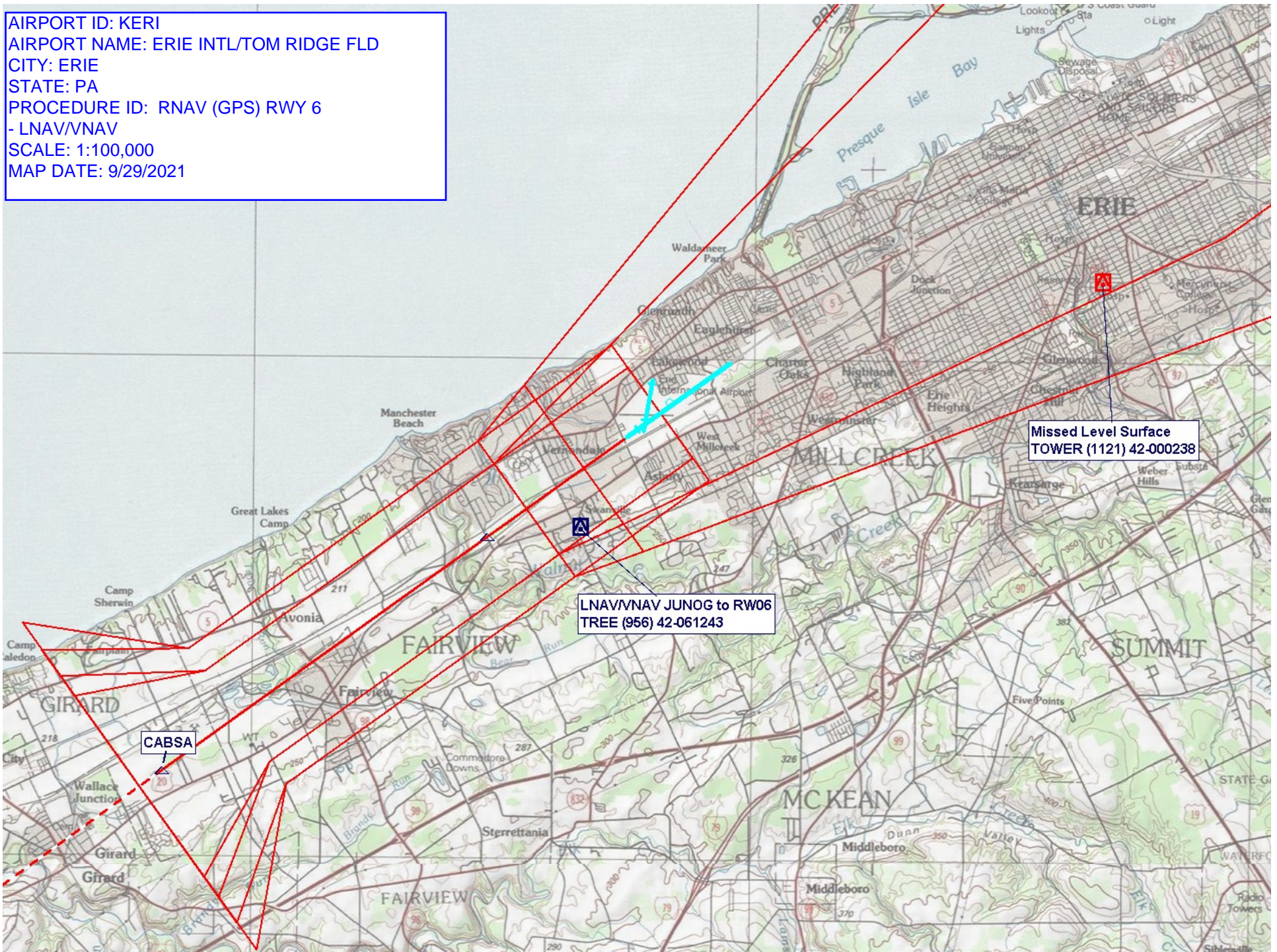
AIRPORT ID: KERI
AIRPORT NAME: ERIE INTL/TOM RIDGE FLD
CITY: ERIE
STATE: PA
PROCEDURE ID: RNAV (GPS) RWY 6
- LPV
SCALE: 1:500,000
MAP DATE: 9/29/2021



AIRPORT ID: KERI
AIRPORT NAME: ERIE INTL/TOM RIDGE FLD
CITY: ERIE
STATE: PA
PROCEDURE ID: RNAV (GPS) RWY 6
- LPV
SCALE: 1:100,000
MAP DATE: 9/29/2021



AIRPORT ID: KERI
AIRPORT NAME: ERIE INTL/TOM RIDGE FLD
CITY: ERIE
STATE: PA
PROCEDURE ID: RNAV (GPS) RWY 6
- LNAV/VNAV
SCALE: 1:100,000
MAP DATE: 9/29/2021



AIRPORT ID: KERI
AIRPORT NAME: ERIE INTL/TOM RIDGE FLD
CITY: ERIE
STATE: PA
PROCEDURE ID: RNAV (GPS) RWY 6
- LNAV
SCALE: 1:100,000
MAP DATE: 9/29/2021

