

Flight Procedures Cover Page	Task Action: FLIGHT CHECK	Task Type: STAR	Estimated Chart Date: 07/11/2024	APWS Task ID: E36E3C85F35B4FE8986BE7F2006D5A80	APWS Project ID: 17BE0ABF9BF14D4EBA1564AF06D6CD14
Procedure: STAR WILKES-BARRE FIVE TETERBORO NJ KTEB		Enroute: YES	Specialist: Young, Silvia		Agreement Number:
Airport ID: KTEB			Airport City: TETERBORO		State: NJ
Facility ID:	Facility Type:	Flight Inspection Remark Type: New FC Slot			
<div>Procedure Comments:</div> <div>ABBREV AMDT; FC FOR MOCA VALUES; FIXES THAT ARE NOW DME ONLY FIXES--DME VALUES PREVIOUSLY FLIGHT CHECKED SAT.</div> <div>ESV (4): LVZ R-301: 90 DME AND 71 DME</div> <div>CONTACT CASIMIR TABAKA (405) 954-7931.</div> <div>HARD DATE, READY FOR FC/CHARTING</div> <div>03/29/2024</div> <div><div>QUALITY 14 CHECKED</div><div>QUALITY 41 CHECKED</div></div>					

ESV Details

Originating Office :ajv-a432		Airspace Docket Number :		Request Type :Revision		
Facility Data						
Chart Name:DMACK		City:WILKES BARRE		Ident:LVZ		State:PA
Type/Class: L-VOR		Frequency: M111.6		Reference Number: 24037611		
Extended Service Volume Data: (Original Record)						
ESV ID	Radial 1	Radial 2	Distance	Minimum Altitude	Maximum Altitude	
FAA 851943 - 008	301		85	180	450	
Requirement: 911125E J70-106 COP TO JHW 861009A 870107A 920618A FC BY VERNON CRUSE ACY FIFO ON 01/07/1987.						
Signature:Young Silvia		Routing Symbol:			Date:06/16/2005	
Extended Service Volume Data: (Requesting Officer)						
ESV ID	Radial 1	Radial 2	Distance	Minimum Altitude	Maximum Altitude	
FAA 851943 - 008	301		90	180	450	
Requirement: REVISE DMACK DISTANCE FROM 85 TO 90						
Signature:Young Silvia		Routing Symbol:AJV-A432			Date:03/28/2024	
Extended Service Volume Data: (FIFO)						
ESV ID	Radial 1	Radial 2	Distance	Minimum Altitude	Maximum Altitude	Action Type
FAA 851943 - 008	301					
Requirement/Remarks:						
Signature:		Routing Symbol:			Date:	

ESV Details

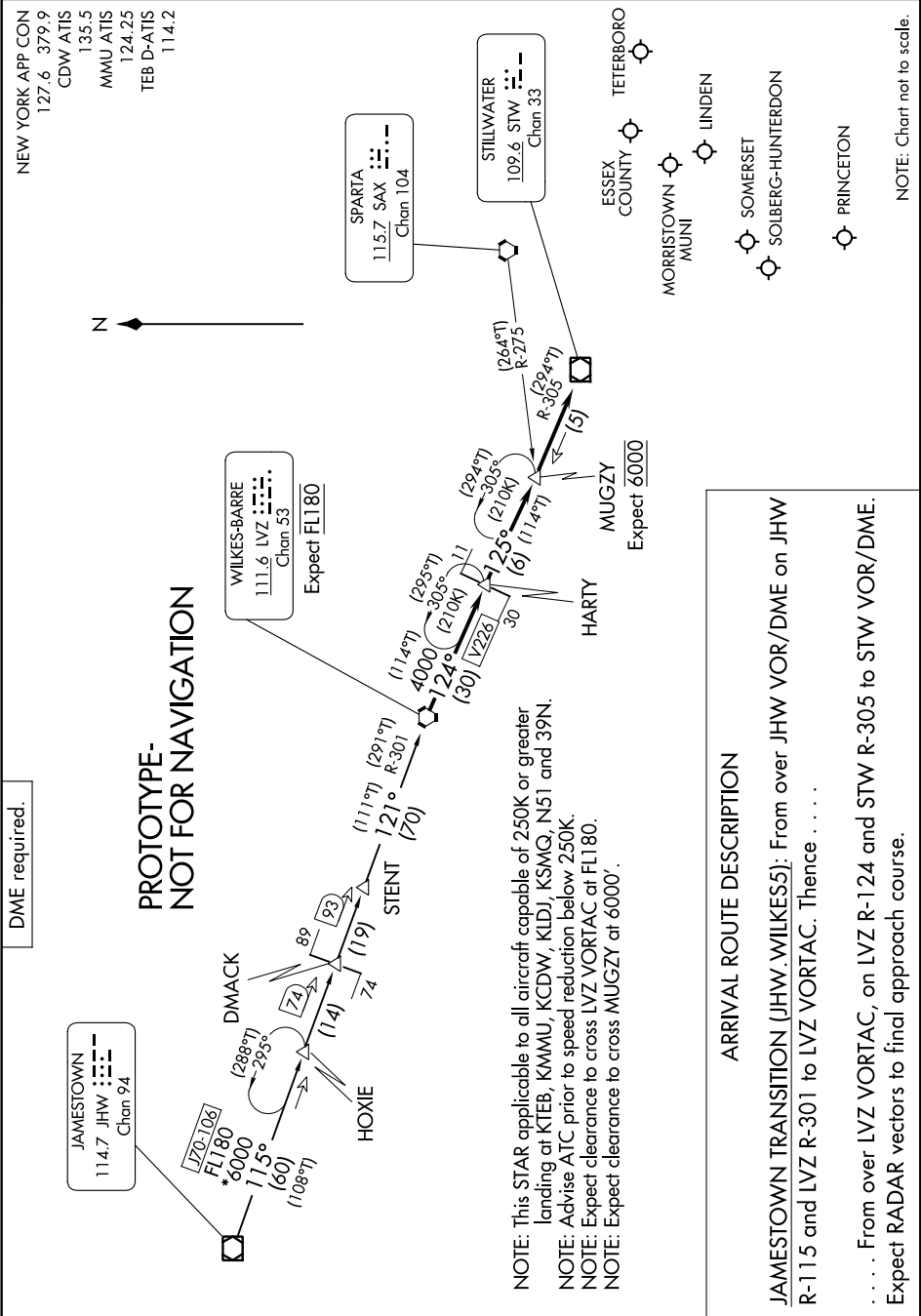
Originating Office :ajv-a432		Airspace Docket Number :		Request Type :Establish		
Facility Data						
Chart Name:STENT		City:WILKES BARRE		Ident:LVZ		State:PA
Type/Class: L-VOR		Frequency: M111.6		Reference Number: 24037613		
Extended Service Volume Data: (Requesting Officer)						
ESV ID	Radial 1	Radial 2	Distance	Minimum Altitude	Maximum Altitude	
FAA 851943 - 018	301		71	180	450	
Requirement: ESTABLISH STENT VOR ESV						
Signature:Young Silvia		Routing Symbol:AJV-A432				Date:03/28/2024
Extended Service Volume Data: (FIFO)						
ESV ID	Radial 1	Radial 2	Distance	Minimum Altitude	Maximum Altitude	Action Type
FAA 851943 - 018	301					
Requirement/Remarks:						
Signature:		Routing Symbol:			Date:	

ESV Details

Originating Office :ajv-a432		Airspace Docket Number :		Request Type :Establish		
Facility Data						
Chart Name:DMACK		City:WILKES BARRE		Ident:LVZ		State:PA
Type/Class: TACAN		Frequency: M1014		Reference Number: 24037612		
Extended Service Volume Data: (Requesting Officer)						
ESV ID	Radial 1	Radial 2	Distance	Minimum Altitude	Maximum Altitude	
FAA 851944 - 009	301		90	180	450	
Requirement: ESTABLISH DMACK DME ESV						
Signature:Young Silvia		Routing Symbol:AJV-A432				Date:03/28/2024
Extended Service Volume Data: (FIFO)						
ESV ID	Radial 1	Radial 2	Distance	Minimum Altitude	Maximum Altitude	Action Type
FAA 851944 - 009	301					
Requirement/Remarks:						
Signature:		Routing Symbol:			Date:	

ESV Details

Originating Office :ajv-a432		Airspace Docket Number :		Request Type :Establish		
Facility Data						
Chart Name:STENT		City:WILKES BARRE		Ident:LVZ		State:PA
Type/Class: TACAN		Frequency: M1014		Reference Number: 24037614		
Extended Service Volume Data: (Requesting Officer)						
ESV ID	Radial 1	Radial 2	Distance	Minimum Altitude	Maximum Altitude	
FAA 851944 - 010	301		71	180	450	
Requirement: ESTABLISH STENT TACAN ESV						
Signature:Young Silvia		Routing Symbol:AJV-A432				Date:03/28/2024
Extended Service Volume Data: (FIFO)						
ESV ID	Radial 1	Radial 2	Distance	Minimum Altitude	Maximum Altitude	Action Type
FAA 851944 - 010	301					
Requirement/Remarks:						
Signature:		Routing Symbol:			Date:	



(LVZ.LVZ4) 24025

WILKES-BARRE FOUR ARRIVAL

TETERBORO, NEW JERSEY

NE-2, 22 FEB 2024 to 21 MAR 2024

NEW YORK APP CON
1127.6 379.9
NEW D-ATIS
1115.7 134.825

NOTE: This STAR applicable to all aircraft capable of 250 KIAS or greater landing at Teterboro, Morristown Muni, Essex Court Princeton, Solberg-Hunterdon, Linden, and Somerset.

NOTE: Advise ATC prior to speed reduction below 250 Knots.

●

ELMIRA
65 ULW ::
Chan 33 (Y)

NOTE: Advise A

WILKES-BARRE
111.6 LVZ : : : : .
Chan 53
Expect FL180

SPARTA
115.7 SAX $\therefore \therefore$ $\therefore \therefore$ $\therefore \therefore$
Chan 104


SLATE RUN
113.9 SLT :
Chan 86

Chen 33

ALLTOWN
117.5 FJC :
Chan 122

MUGZY
Expect 6000

ESSEX COUNTY TETERBORO

 MORRISTOWN
MUNI

SOMERSET

 SOLBERG-HUNTERDON
PRINCETON

NOTE: Chart not to scale.

ARRIVAL ROUTE DESCRIPTION

JAMESTOWN TRANSITION (JHW.LVZ4): From over JHW VOR/DME on JHW R-115 and LVZ R-301 to LVZ VORTAC. Thence

..... from over LVZ VORTAC, on LVZ R-124 and STW R-305 to STW VOR/DME.
Expect radar vectors to final approach course.

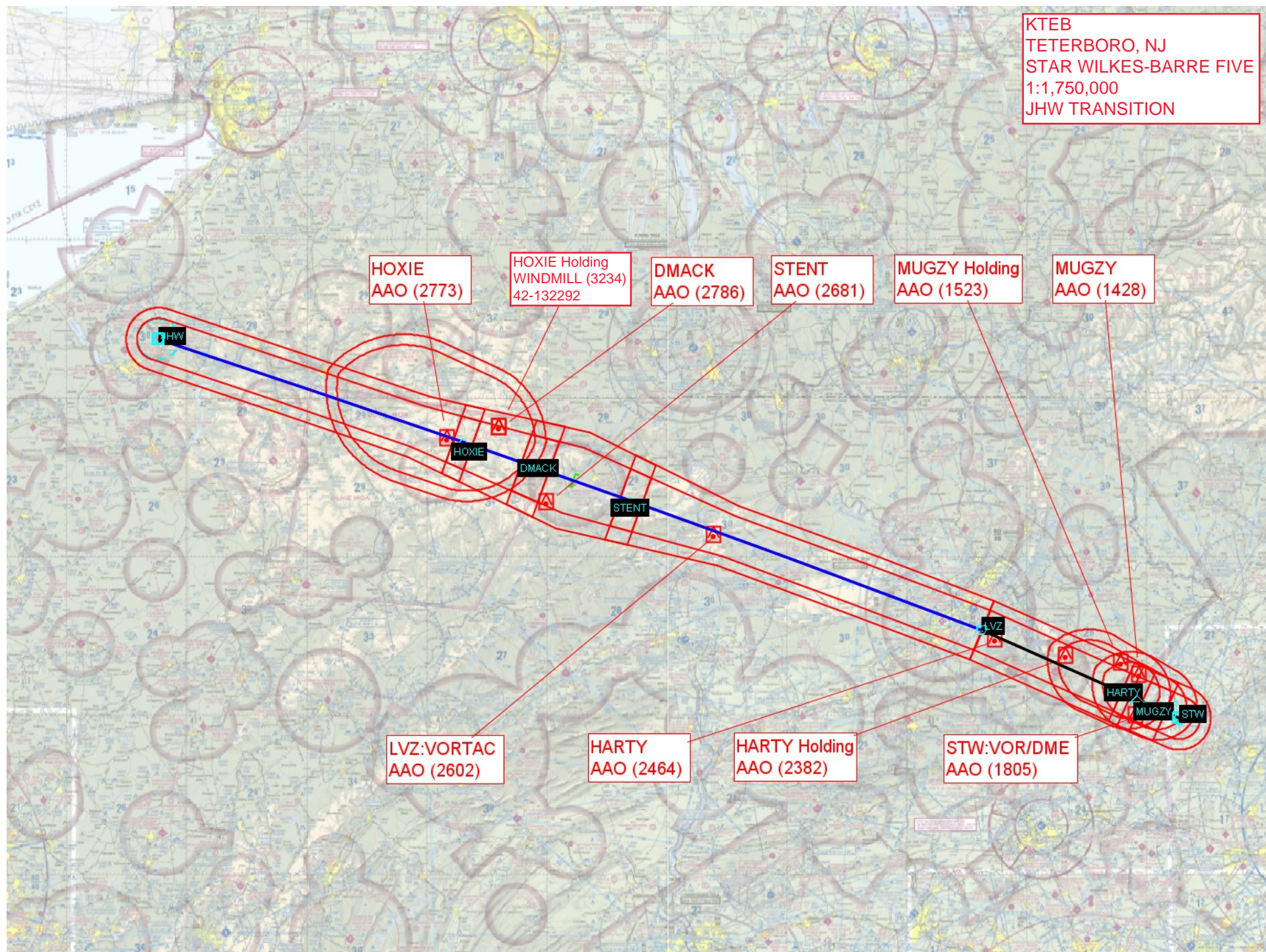
NE-2, 22 FEB 2024 to 21 MAR 2024

WILKES-BARRE FOUR ARRIVAL

(LVZ.LVZ4) 20OCT11

TETERBORO, NEW JERSEY

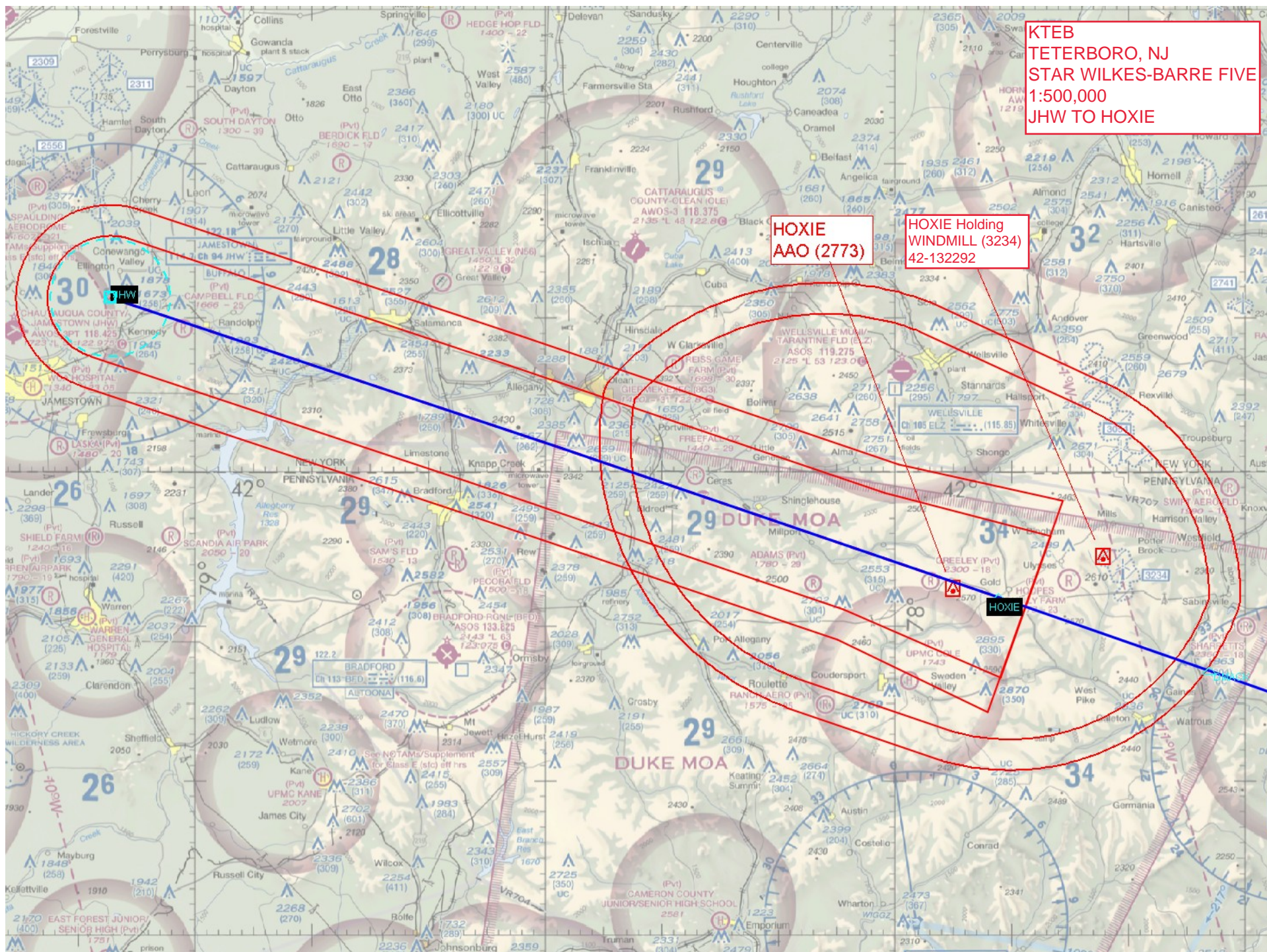
KTEB
TETERBORO, NJ
STAR WILKES-BARRE FIVE
1:1,750,000
JHW TRANSITION

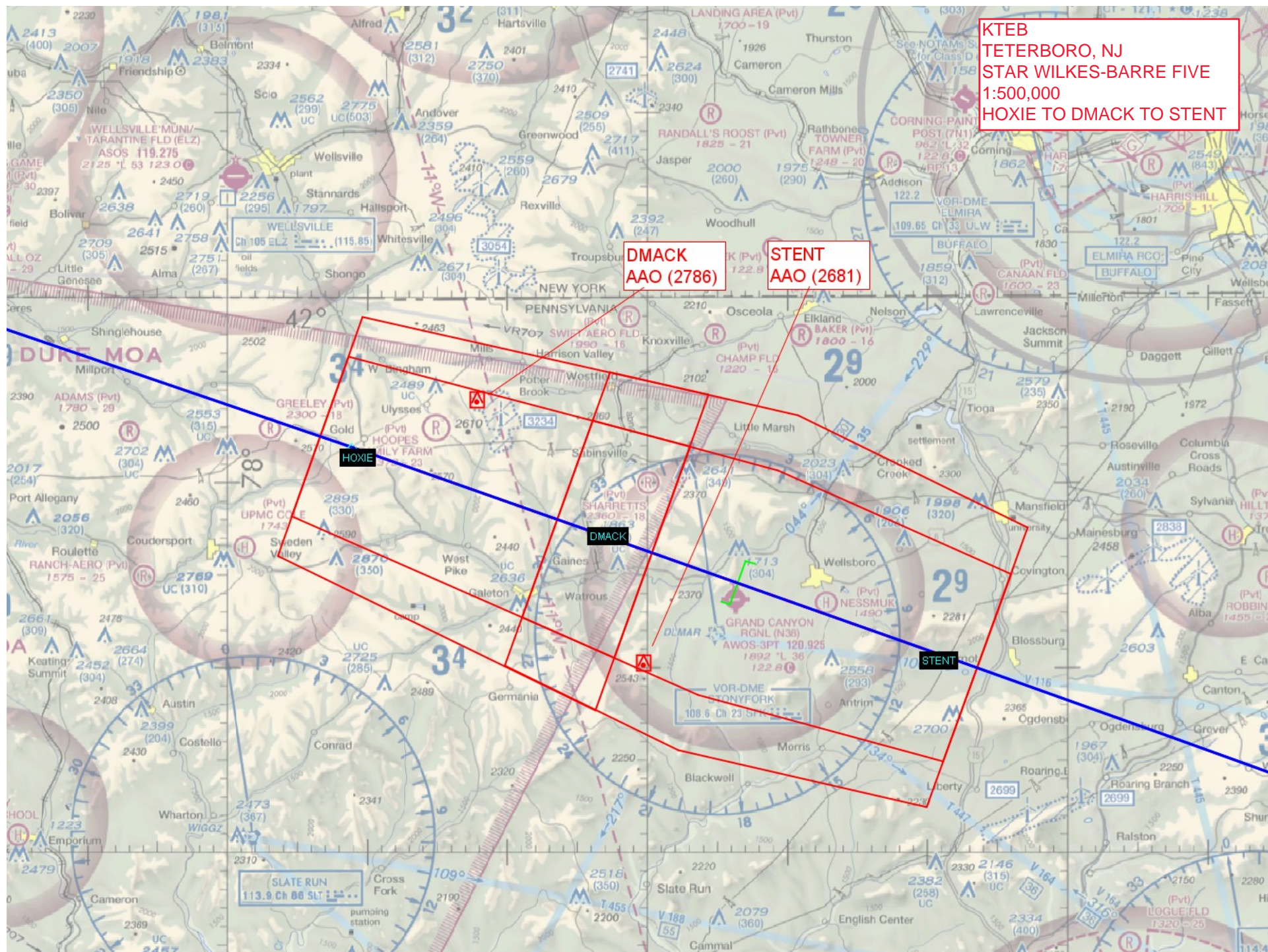


KTEB
TETERBORO, NJ
STAR WILKES-BARRE FIVE
1:500,000
JHW TO HOXIE

HOXIE
AAO (2773)

HOXIE Holding
WINDMILL (3234)
42-132292





KTEB
TETERBORO, NJ
STAR WILKES-BARRE FIVE
1:500,000
STENT TO LVZ

LVZ: VORTAC
AAO (2602)

STENT

WILKES-BARRE TRSA
SEE TWR FREQ TAB

LVZ

KTEB
TETERBORO, NJ
STAR WILKES-BARRE FIVE
1:500,000
LVZ TO HARTY TO MUGZY TO STW

HARTY
AAO (2464)

HARTY Holding
AAO (2382)MUGZY Holding
AAO (1523)

MUGZY
AAO (1428)

STW:VOR/DM
AAO (1805)

