

Flight Procedures Cover Page	Task Action: P-NOTAM	Task Type: IAP	Estimated Chart Date: 09/08/2022	APWS Task ID: E353F0D889124A84ADB044FB3D9BFB9B	APWS Project ID: 5BCEE36AA2EE4D11B94C1D1C9D123B24
Procedure: ILS OR LOC RWY 8R AMDT 1D		Enroute: NO	Specialist: Hanby, William		Agreement Number:
Airport ID: KPUB			Airport City: PUEBLO		State: CO
Facility ID: PUB	Facility Type: ILS	Flight Inspection Remark Type:			
<p>Procedure Comments: P-NOTAM</p> <p>ACTIVE DATA USED.</p> <p>NEW CIRCLING CAT C CONTROLLING OBSTACLE: TRAVERSE WAY (08-075140), 382031.65N/1043258.69W, 5275 MSL/15 AGL, AC (2C), ROC 300. NEW CIRCLING CAT C CONTROLLING OBSTACLE MDA/HAA INCREASES FROM MDA 5560/HAA 831 TO MDA 5580/HAA 851. 5275 + 300 (ROC) = 5575 (5580 ROUNDED).</p> <p>PROCESSED IAW TECHNICAL SUPPORT GROUP (AJF-17) MEMO DATED 07/07/2021 SUBJECT: GUIDANCE FOR PROCEDURAL CHANGES REQUIRING FLIGHT INSPECTION/VALIDATION.</p> <p>THIS CANCELS FDC 1/5316.</p> <p>CONTACT MARK ADAMS: (405) 954-9946.</p>					



6/2/22 J. DuBois

Digitally signed by  
**MARK D ADAMS**  
Jun 14, 2022



AL-334 (FAA)

PUEBLO, COLORADO

21056

LOC I-PUB <b><u>109.5</u></b>	APP CRS <b>080°</b>	Rwy Idg TDZE Apt Elev	<b>10496</b> <b>4671</b> <b>4729</b>
----------------------------------	------------------------	-----------------------------	--

ILS or LOC RWY 8R  
PUEBLO MEML (PUB)

DME required.

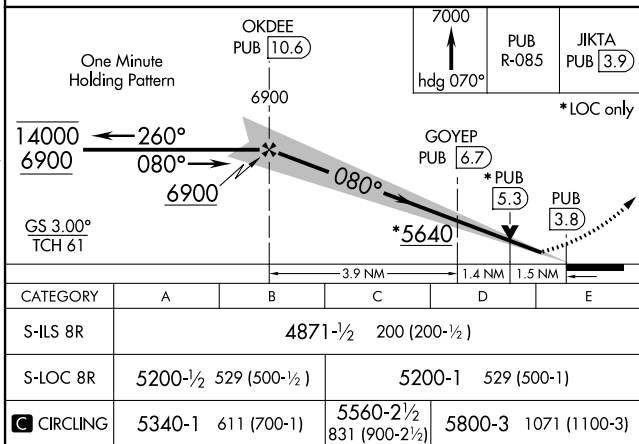
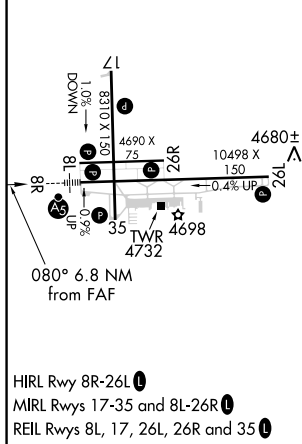
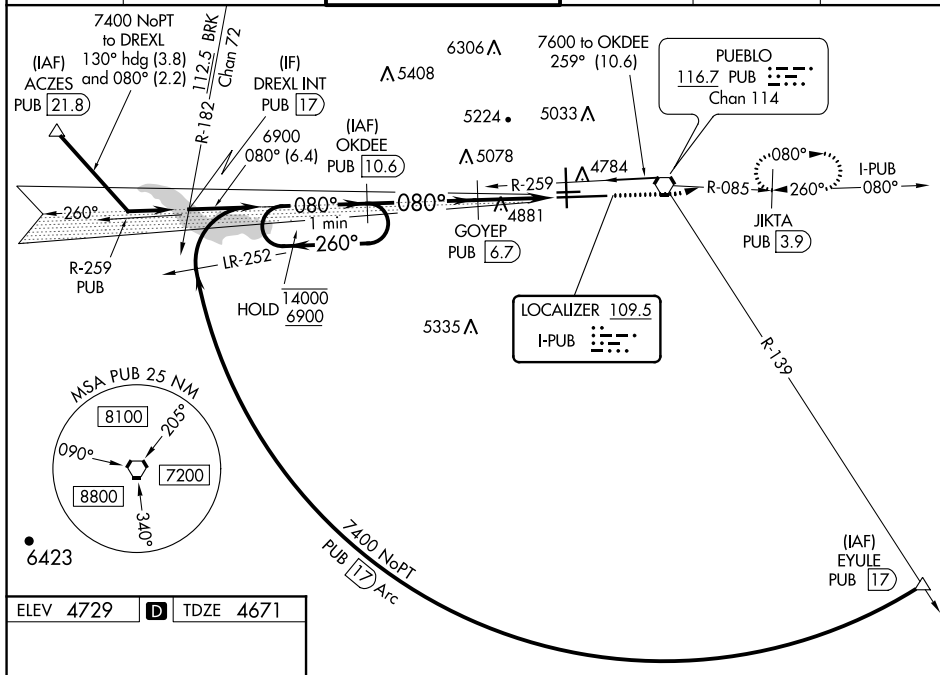
**T** Circling NA for Cat E west of Rwy 17-35. Autopilot coupled approach  
**A** NA below 4950. Procedure turn NA for Cat E aircraft. DME from PUB  
VORTAC, simultaneous reception of I-PUB and PUB DME required. For  
inop ALS, increase S-ILS 8R Cat E visibility to  $\frac{3}{4}$  SM and S-LOC 8R  
Cat E visibility to  $1\frac{1}{2}$  SM.

MALSR



**MISSED APPROACH:** Climb to 7000 on heading 070° and on PUB VORTAC R-085 to JIKTA/ PUB 3.9 DME and hold, continue climb-in-hold to 7000.

ATIS <b>125.25</b>	DENVER APP CON ★ <b>120.1 290.5</b>	PUEBLO TOWER ★ <b>119.1 (CTAF) 0 257.8</b>	GND CON <b>121.9</b>	CLNC DEL <b>120.9</b>	UNICOM <b>122.95</b>
-----------------------	--	---	-------------------------	--------------------------	-------------------------



PUEBLO, COLORADO

Amdt 1C 25FEB21

38°17'N-104°30'W

PUEBLO MEML (PUB)

ILS or LOC RWY 8R

SW-1, 24 FEB 2022 to 24 MAR 2022

SW-1, 24 FEB 2022 to 24 MAR 2022

