

Flight Procedures Cover Page	Task Action: P-NOTAM	Task Type: IAP	Estimated Chart Date: 12/30/2021	APWS Task ID: E32B900F4E7A4053AAC3B8AAC78AF116	APWS Project ID: EA4D8612C65940CFAD2483562C295F06
Procedure: APPROACH VOR OR GPS A AMDT 1A		Enroute: NO	Specialist: Donkor, Kweku		Agreement Number:
Airport ID: KPTV			Airport City: PORTERVILLE		State: CA
Facility ID:	Facility Type:	Flight Inspection Remark Type:			
<p>Procedure Comments: P-NOTAM.</p> <p>THIS CANCELS FDC 0/3973.</p> <p>ORDER 8260.3, CHAPTER 2, NEW CIRCLING CRITERIA APPLIED.</p> <p>CONTACT: LONNIE EVERHART 405-954-4576/DAVID TEFFETELLER 202-267-5177.</p>					



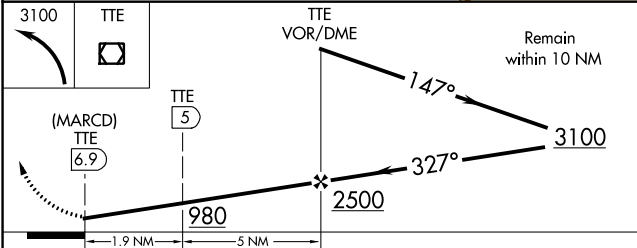
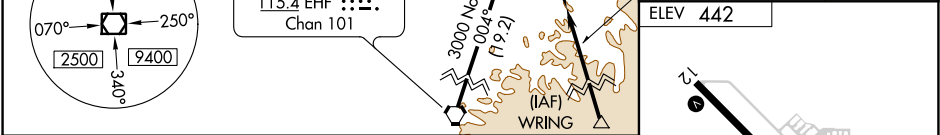
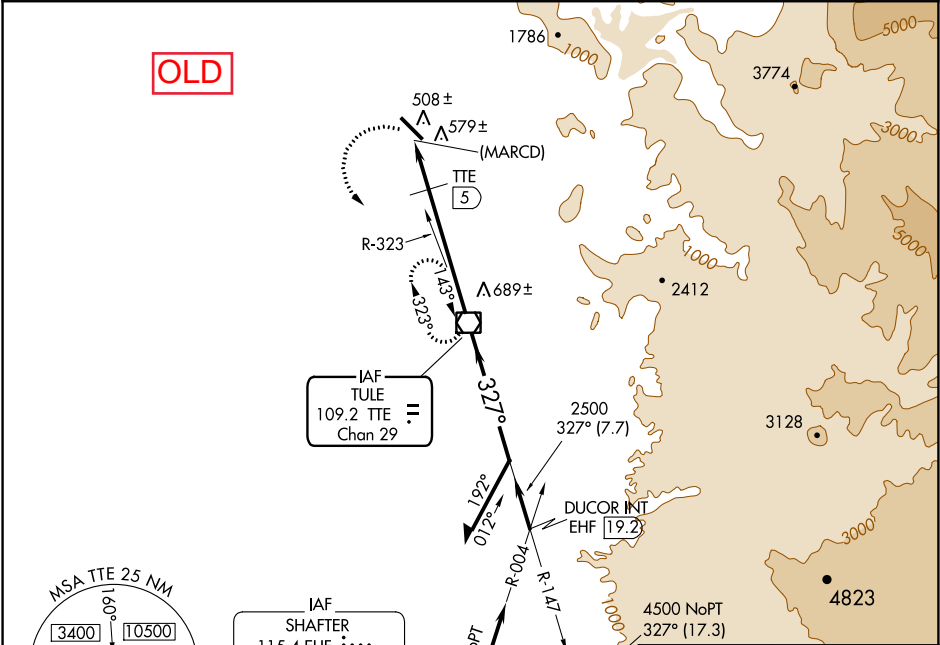
VOR/DME TTE	APP CRS	Rwy Idg	N/A
109.2	327°	TDZE	N/A
Chan 29		Apt Elev	442

VOR or GPS-A

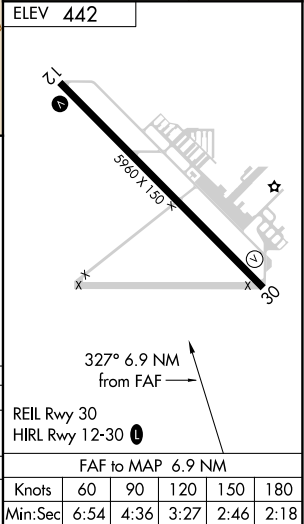
PORTERVILLE MUNI (PTV)

MISSED APPROACH: Climbing left turn to 3100 direct TTE VOR/DME and hold.

AWOS-3PT 134.625	BAKERFIELD APP CON★ 120.5	UNICOM 122.8 (CTAF) 0
---------------------	------------------------------	--------------------------



CATEGORY	A	B	C	D
CIRCLING	980-1 538 (600-1)	980-1½ 538 (600-1½)	1000-2 558 (600-2)	
DME MINIMA				
CIRCLING	880-1 438 (500-1)	900-1 458 (500-1)	900-1½ 458 (500-1½)	1000-2 558 (600-2)



PTV
PORTERVILLE MUNI
VOR OR GPS-A
CIRCLING 100K

