

Flight Procedures Cover Page	Task Action: Amendment	Task Type: SID	Estimated Chart Date: 06/17/2021	APWS Task ID: E2995EE8D5A343D187070C8648310261	APWS Project ID: A3CEF82BFB644E3684EF15A4886C560B
Procedure: SID EEONS EIGHT (RNAV) DENVER CO KDEN		Enroute: YES	Specialist: Garrity, Michael		Agreement Number:
Airport ID: KDEN			Airport City: DENVER		State: CO
Facility ID:	Facility Type:	Flight Inspection Remark Type:			
<div>Procedure Comments: ABBREVIATED AMENDMENT</div> <div>PROCESSED IAW AIRCRAFT OPERATIONS GROUP (AJF-10) MEMO, APRIL 29, 2020 SUBJECT: FLIGHT INSPECTION REVIEW NOT REQUIRED</div> <div>CONTACT: ALLAN WILL, TEAM 2 SUBTEAM-C MANAGER, 405.954.6103, OR MARLON ROBINSON, TEAM 2 MANAGER, 405.954.3636</div> <div>QUALITY 26 CHECKED</div> <div>QUALITY 8 CHECKED</div>					

**TOP ALTITUDE:**  
**FL230**

D-ATIS DEP  
134.025  
CLNC DEL  
118.75  
CPDLC  
DENVER DEP CON  
128.25 371.95

NOTE: DME/DME/IRU or GPS required.

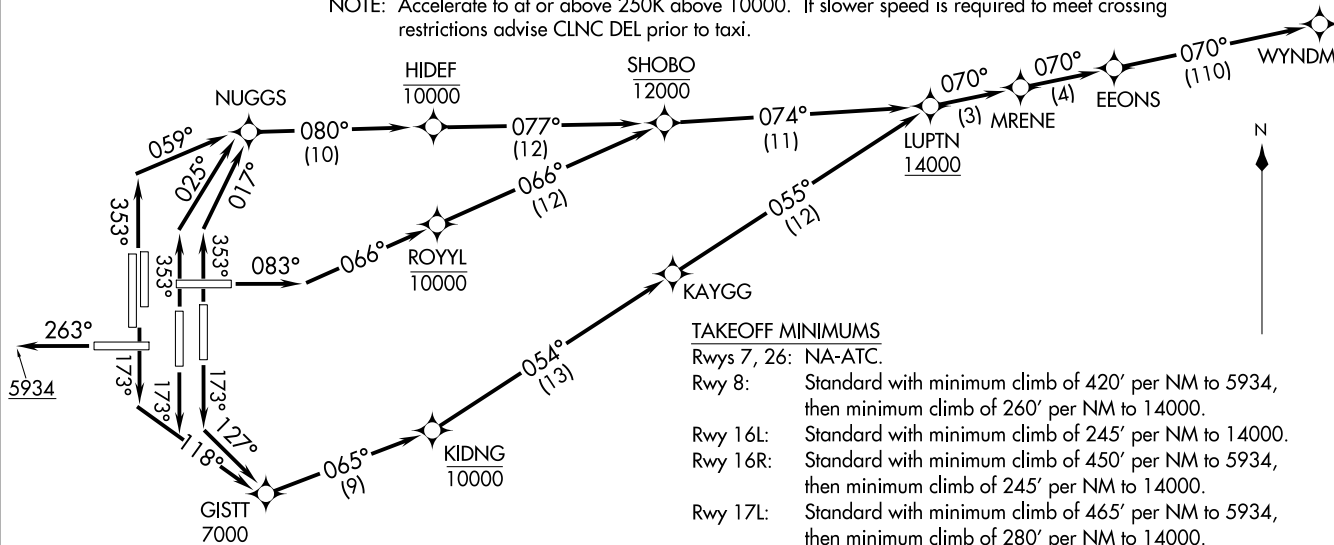
NOTE: RNAV 1.

NOTE: Turbojets only.

NOTE: Takeoff Rwy 8, 16L/R, 17L/R, 34L/R, 35L/35R - RADAR required for non-GPS equipped aircraft.

NOTE: Rwy 25 Departures - RADAR required.

NOTE: Accelerate to at or above 250K above 10000. If slower speed is required to meet crossing restrictions advise CLNC DEL prior to taxi.



## TAKEOFF MINIMUMS

Rwys 7, 26: NA-ATC.

Rwy 8: Standard with minimum climb of 420' per NM to 5934, then minimum climb of 260' per NM to 14000.

Rwy 16L: Standard with minimum climb of 245' per NM to 14000.

Rwy 16R: Standard with minimum climb of 450' per NM to 5934, then minimum climb of 245' per NM to 14000.

Rwy 17L: Standard with minimum climb of 465' per NM to 5934, then minimum climb of 280' per NM to 14000.

Rwy 17R: Standard with minimum climb of 465' per NM to 5934, then minimum climb of 250' per NM to 14000.

Rwy 25: Standard with minimum climb of 400' per NM to 5934.  
Rwys 34L/R: Standard with minimum climb of 500' per NM to 5934.

Rwy 35L: Standard with minimum climb of 320' per NM to 8400.

Rwy 35R: Standard with minimum climb of 300' per NM to 5934, then minimum climb of 230' per NM to 14000.

NOTE: Chart not to scale.

(NARRATIVE ON FOLLOWING PAGE)



DEPARTURE ROUTE DESCRIPTION

TAKEOFF RUNWAY 8: Climb on heading 083° to intercept course 066° to cross ROYYL at/below 10000, then on track 066° to cross SHOBO at/below 12000, then on track 074° to cross LUPTN at/above 14000, thence . . . .

TAKEOFF RUNWAYS 16L/R, 17R: Climb on heading 173° to intercept course 118° to cross GISTT at/above 7000, then on track 065° to cross KIDNG at/below 10000, then on track 054° to KAYGG, then on track 055° to cross LUPTN at/above 14000, thence . . . .

TAKEOFF RUNWAY 17L: Climb on heading 173° to intercept course 127° to cross GISTT at/above 7000, then on track 065° to cross KIDNG at/below 10000, then on track 054° to KAYGG, then on track 055° to cross LUPTN at/above 14000, thence . . . .

TAKEOFF RUNWAY 25: Climb on heading 263° to 5934, then continue climb on heading 263° or as assigned by ATC for RADAR vectors to EEONS, thence . . . .

TAKEOFF RUNWAYS 34L/R: Climb on heading 353° to intercept course 059° to NUGGS, then on track 080° to cross HIDEF at/below 10000, then on track 077° to cross SHOBO at/below 12000, then on track 074° to cross LUPTN at/above 14000, thence . . . .

TAKEOFF RUNWAY 35L: Climb on heading 353° to intercept course 025° to NUGGS, then on track 080° to cross HIDEF at/below 10000, then on track 077° to cross SHOBO at/below 12000, then on track 074° to cross LUPTN at/above 14000, thence . . . .

TAKEOFF RUNWAY 35R: Climb on heading 353° to intercept course 017° to NUGGS, then on track 080° to cross HIDEF at/below 10000, then on track 077° to cross SHOBO at/below 12000, then on track 074° to cross LUPTN at/above 14000, thence . . . .

. . . . on depicted route to WYNDM, maintain FL230 or lower filed altitude. Expect higher filed altitude 10 minutes after departure.

SW-1, 31 DEC 2020 to 28 JAN 2021

SW-1, 31 DEC 2020 to 28 JAN 2021

# Federal Aviation Administration Categorical Exclusion Declaration

**Date:** 12/15/20

**IFP:** Thompson, Kyle (kyle.thompson@faa.gov)

**Airport Contact:** -

**Request ID:** KDEN\_201215

**Single or Multiple Procedure:** Multiple

**Procedure Name(s):** EEONS SID EMMYS SID EXTAN SID LANDR STAR

**Procedure Request Description:**

Procedure Description:

Amend chart note on all three SIDs from "Accelerate to at or above 250K above 10000..." to "Accelerate to 250KIAS or greater, upon reaching 10000..."

Remove all of the Satellite airports (KAPA, KBJC, KFNL AND KCFO) from all three SIDs. KDEN should be the only airport on these procedures.

Remove Chart note on LANDR Arrival - "NOTE: Adjacent STAR is SAYGE ARRIVAL".

Procedure Benefit:

Procedure changes will reduce confusion.

Procedure Need:

This is poorly worded and was identified by industry as being very confusing to pilots. ATC facility routinely receives calls from pilots asking what the chart note means.

**Declaration of Exclusion:**

The FAA has reviewed the above referenced proposed action and it has been determined, by the undersigned, to be categorically excluded from further environmental documentation according to FAA Order 1050.1, "Environmental Impacts: Policies and Procedures." The implementation of this action will not result in any extraordinary circumstances in accordance with FAA Order 1050.1.

**Basis for this Determination:**

This review was conducted in accordance with policies and procedures in Department of Transportation Order 5610.1, "Procedures for Considering Environmental Impacts" and FAA Order 1050.1.

**The applicable Categorical Exclusion is:**

**5-6.5.k:** Publication of existing air traffic control procedures that do not essentially change existing tracks, create new tracks, change altitude, or change concentration of aircraft on these tracks. (ATO, AVS)

**The above flight procedure has been developed within the accepted parameters.**

Concurrence/Reviewed By:

LONNIE DEL COVALT  
Digitally signed by LONNIE DEL COVALT  
Date: 2020.12.15 12:22:29 -0600

Date: \_\_\_\_\_

Title: \_\_\_\_\_  
Environmental Protection Specialist

Approved By:

**MARINA JMP LANDIS**

 Digitally signed by MARINA JMP LANDIS  
Date: 2020.12.15 10:24:03 -08'00'

Date: \_\_\_\_\_

Title: \_\_\_\_\_  
Environmental Protection Specialist