

Flight Procedures Cover Page	Task Action: Amendment	Task Type: IAP	Estimated Chart Date: 02/25/2021	APWS Task ID: E2559AF3834045FA9642D6EA462ED947	APWS Project ID: F7E2BDF5B600451AB34CF096A4964A80
Procedure: RNAV (GPS) RWY 33 AMDT 0A		Enroute: YES	Specialist: Lima, Eduardo		Agreement Number:
Airport ID: KGDB		Airport City: GRANITE FALLS		State: MN	
Facility ID:	Facility Type:	Flight Inspection Remark Type:			
<p><b>Procedure Comments:</b>  NEW CONTROLLING OBSTACLE FOR CIRCLING CAT B-C (27-026270, TRANSMISSION LINE, 1182 MSL), CAT D (27-024313, TOWER, 1211 MSL).    PROCESSED IAW AIRCRAFT OPERATIONS GROUP (AJW-33) MEMO, OCTOBER 3, 2018, SUBJECT: FLIGHT INSPECTION REVIEW NOT REQUIRED.    ACTIVE AIRPORT DATA UTILIZED.    CONTACT JOHN BORDY (405) 954-0980.    01/08/21: THIS IS A CORRECTED COPY OF THE FORM APPROVED ON 05/12/20.  1. TERMINAL ROUTES: UPDATED MOLOW TO JOCKA RNP FROM 0.30 TO 1.00.</p>					

QUALITY  
49  
CHECKED

QUALITY  
41  
CHECKED

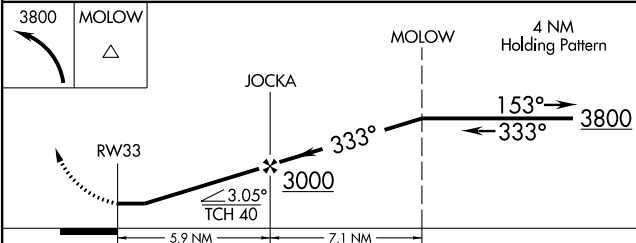
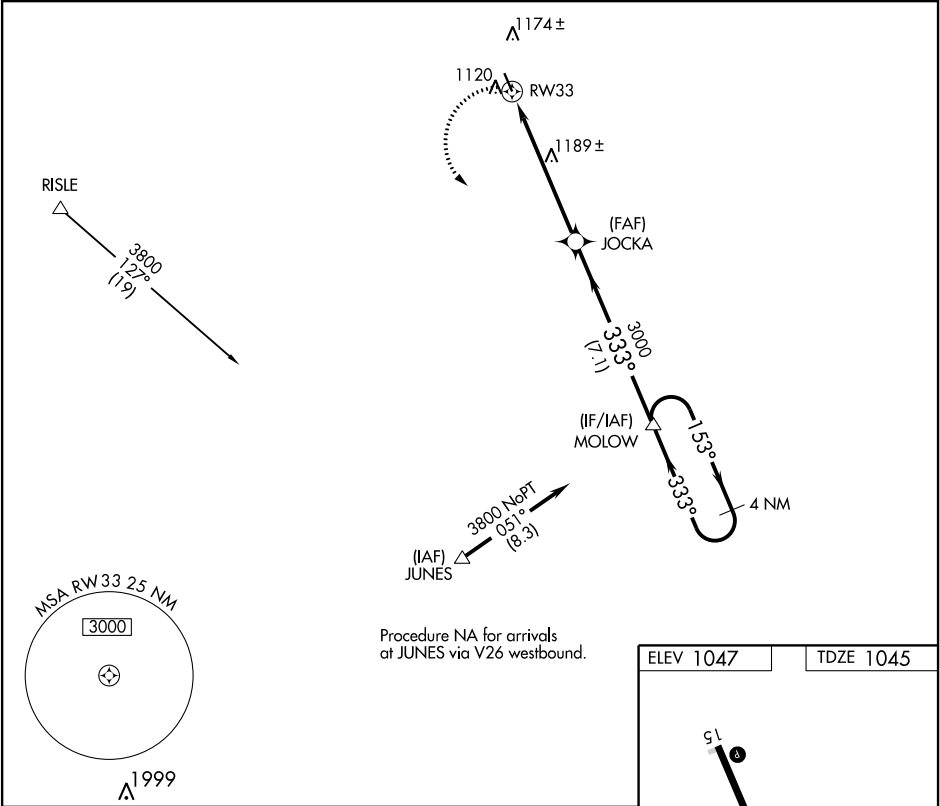
▼

▲

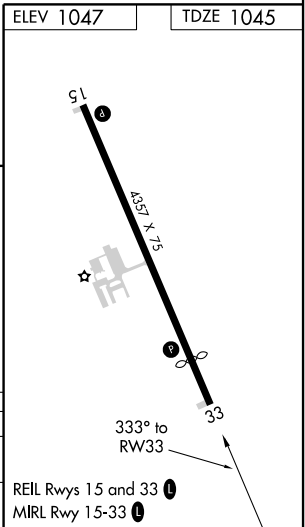
DME/DME RNP-0.3 NA. Visibility reduction by helicopters NA.  
When local altimeter setting not received, use Montevideo  
altimeter setting and increase all MDA 40 feet.

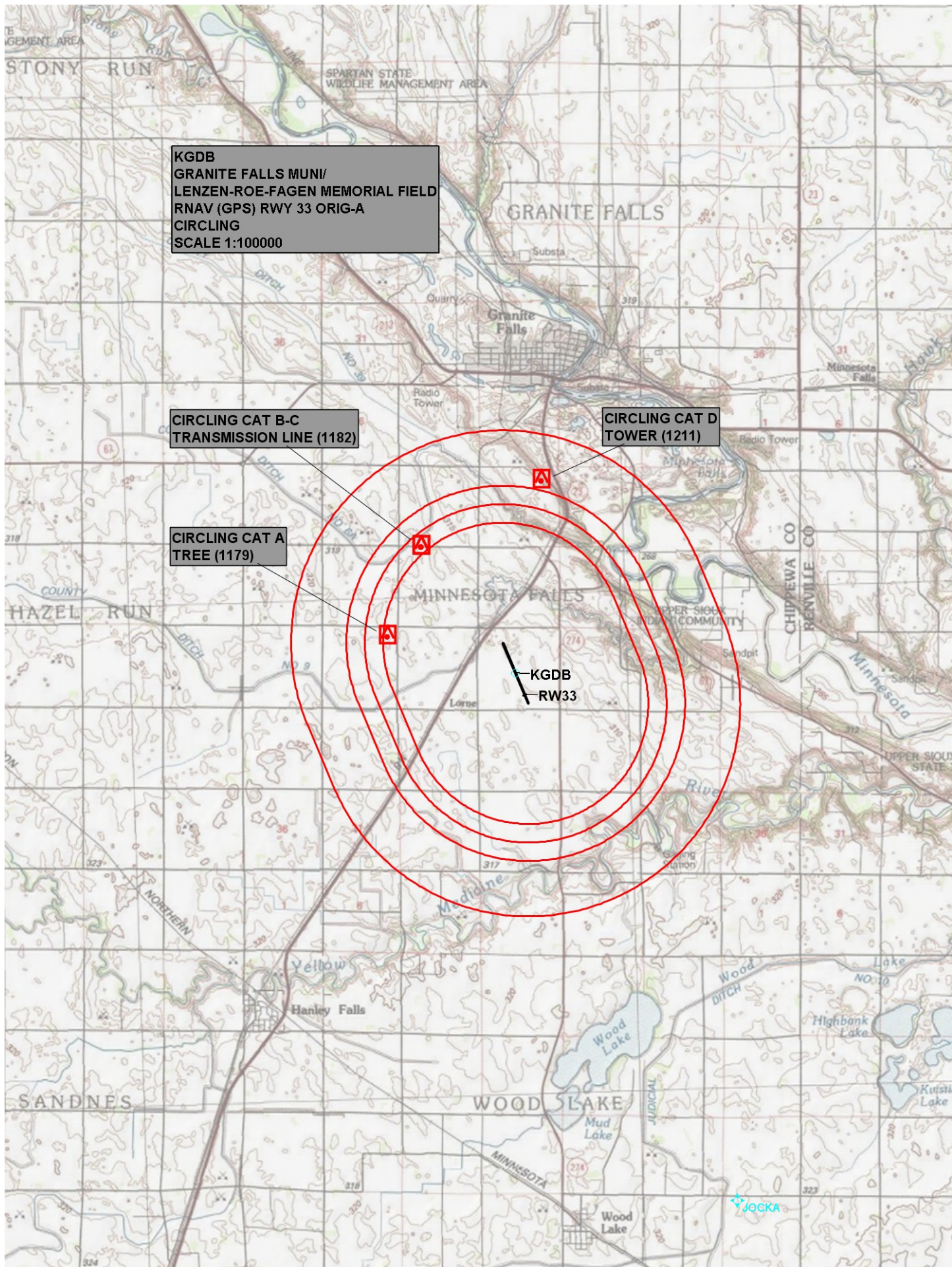
MISSED APPROACH: Climbing left turn  
to 3800 direct MOLOW and hold.

AWOS-3 120.1	MINNEAPOLIS CENTER 127.1 290.2	GCO 121.725	UNICOM 122.8 (CTAF) 0
-----------------	-----------------------------------	----------------	--------------------------



CATEGORY	A	B	C	D
LNNAV MDA	1480-1	435 (500-1)	1480-1¼ 435 (500-1¼)	1480-1½ 435 (500-1½)
CIRCLING	1480-1 433 (500-1)	1500-1 453 (500-1)	1500-1½ 453 (500-1½)	1600-2 553 (600-2)





KGDB  
GRANITE FALLS MUNI/  
LENZEN-ROE-FAGEN MEMORIAL FIELD  
RNAV (GPS) RWY 33 ORIG-A  
CIRCLING  
SCALE 1:100000

CIRCLING CAT B-C  
TRANSMISSION LINE (1182)

CIRCLING CAT A  
TREE (1179)

CIRCLING CAT D  
TOWER (1211)

KGDB  
RW33

JOCKA