

Flight Procedures Cover Page	Task Action: Amendment	Task Type: IAP	Estimated Chart Date: 03/26/2020	APWS Task ID: E1479DC28899481C8D1F87E51CC96D84	APWS Request ID: 11FD04B0B5E44EDD8239FE161C492EAC
Procedure: RNAV (GPS) RWY 11 AMDT 1B		Enroute: NO	Specialist: Sweeting, Dexter		Agreement Number:
Airport ID:	Airport Name: STUART-ATKINSON MUNI	Airport City: ATKINSON	<i>Digitally signed by</i> <b>DONALD H LANIER</b>		State: NE
Facility ID:	Facility Type:	Flight Inspection Remark Type: Jan 16, 2020			
<p><b>Procedure Comments:</b>          PROCESSED IAW AIRCRAFT OPERATIONS GROUP (AJW-33) MEMO, OCTOBER 3, 2018, SUBJECT: FLIGHT INSPECTION REVIEW NOT REQUIRED.</p> <p>REMOVED ONL VORTAC FEEDER AND AIRWAY NOTE - ONL VORTAC DECOMMISSIONING          REMOVED AIRWAY NOTE FOR FIX ADEDY - ONL VORTAC DECOMMISSIONING</p> <p>INCORPORATED FDC 9/5429</p> <p>01/15/2020: THIS IS A CORRECTED COPY OF THE FORM APPROVED ON: 12/09/2019:          1. CORRECTED ALL REFERENCES OF O'NEAL TO O'NEILL.</p> <p>CONTACT: DONALD LANIER 405-954-8242</p>					



ATKINSON, NEBRASKA

AL-9257 (FAA)

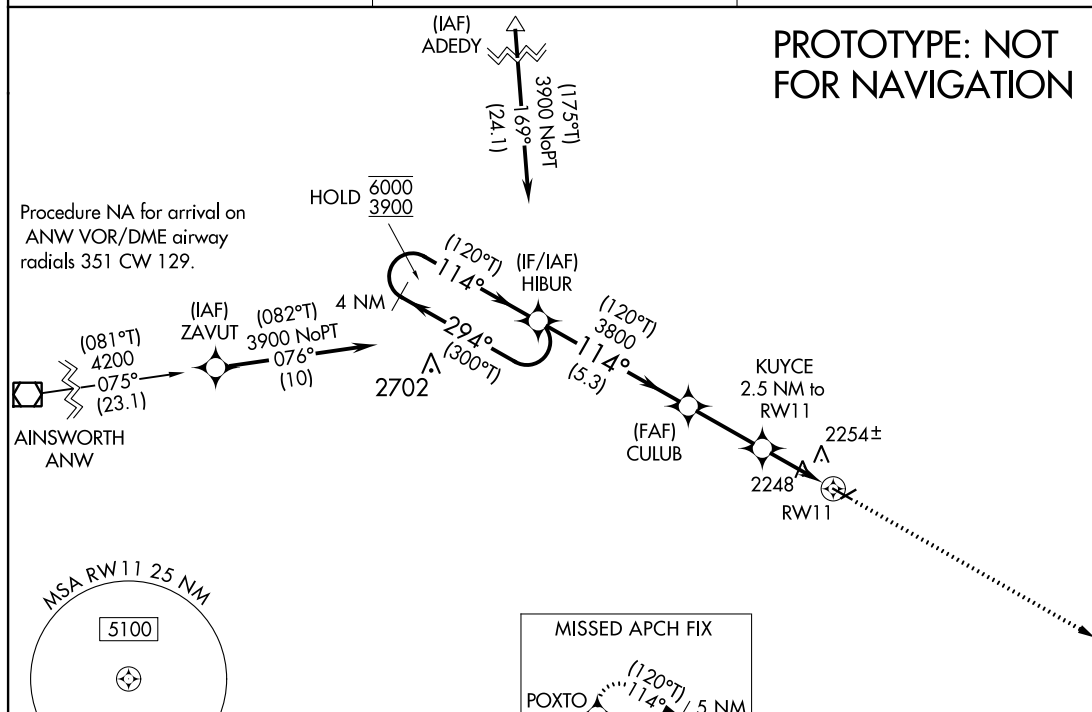
FIG

WAAS CH <b>69427</b> <b>W11A</b>	APP CRS <b>114°</b>	Rwy Idg TDZE Apt Elev	<b>3900</b> <b>2131</b> <b>2131</b>
--	------------------------	-----------------------------	---

# **RNAV (GPS) RWY 11** **STUART-ATKINSON MUNI (8V2)**

RNP APCH.	MISSED APPROACH: Climb to 5000 direct POXTO and hold, continue to climb-in-hold to 5000.
-----------	--

ONL AWOS-3 <b>121.125</b>	MINNEAPOLIS CENTER <b>128.0 257.95</b>	CTAF <b>122.9 0</b>
------------------------------	---	------------------------



ELEV 2131		TDZE 2131	
4 NM Holding Pattern		5000 POXTO	
HIBUR		*LNAV only	
CULUB		RW11	
KUYCE 2.5 NM to RW11		3900 X 60	
*2960		2970 X 100	
GP 3.00° TCH 40		MIRL Rwy 11-29 0	
CATEGORY	A	B	D
LPV DA	2433-1	302 (400-1)	NA
LNAV/VNAV DA	2577-1 3/8	466 (500-1 3/8)	NA
LNAV MDA	2560-1	429 (500-1)	NA
CIRCLING	2620-1 489 (500-1)	2640-1 509 (600-1)	NA

AUTOMATED AL-9257 RNAV (GPS) RWY 11

NC-2

29 NOV 2019

COMPILER: CG

REVIEWER:

DBL CHKR:

EFF: FIG

ATKINSON, NEBRASKA

Amdt 1B FIG

42°34'N-99°02'W

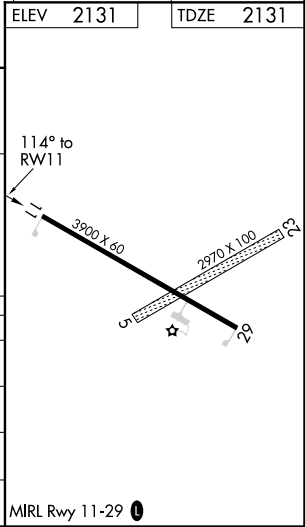
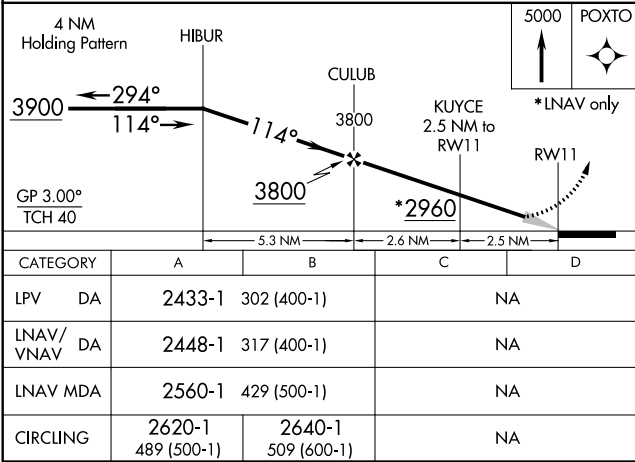
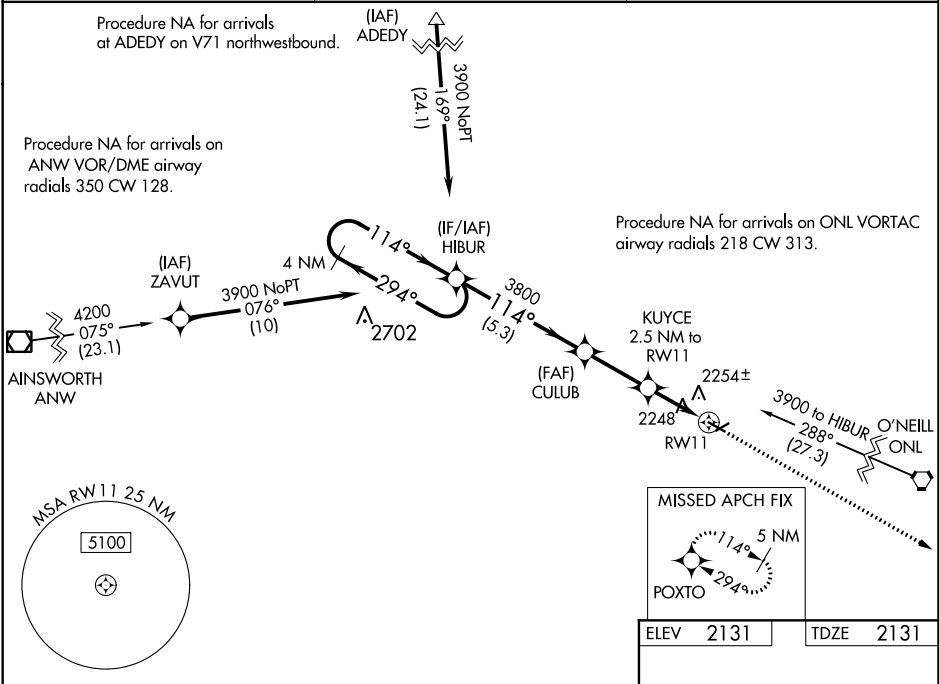
**STUART-ATKINSON MUNI (8V2)**  
**RNAV (GPS) RWY 11**

WAAS CH <b>69427</b> <b>W11A</b>	APP CRS <b>114°</b>	Rwy Idg TDZE <b>2131</b> Apt Elev <b>2131</b>
--	------------------------	---

RNAV (GPS) RWY 11  
STUART-ATKINSON MUNI (8V2)

Baro-VNAV NA. Use O'Neill altimeter setting; when not received, use Ainsworth altimeter setting and increase LPV DA to 2543 feet and visibility all Cats to 1½ mile, LNAV/VNAV DA to 2558 feet and visibility all Cats to 1½ mile, increase all MDA 120 feet. DME/DME RNP-0.3 NA.	MISSED APPROACH: Climb to 5000 direct POXTO and hold, continue to climb-in-hold to 5000.
---	--

O'NEILL AWOS-3 <b>121.125</b>	MINNEAPOLIS CENTER <b>128.0 257.95</b>	CTAF <b>122.9</b>
----------------------------------	---	----------------------



NC-2, 10 OCT 2019 to 07 NOV 2019

NC-2, 10 OCT 2019 to 07 NOV 2019

