

Flight Procedures Cover Page	Task Action: FLIGHT CHECK	Task Type: IAP	Estimated Chart Date: 01/25/2024	APWS Task ID: E08607A2BC5C481483AE50CBC912C4B1	APWS Project ID: BC3E1582132C41DA863E15CBC616A65E
Procedure: ILS OR LOC RWY 24 AMDT 1		Enroute: NO	Specialist: Lindholm, Scott		Agreement Number:
Airport ID: KSRR			Airport City: RUIDOSO		State: NM
Facility ID: SRR	Facility Type: ILS	Flight Inspection Remark Type: New FC Slot			
<p>Procedure Comments:</p> <p>KSRR HAS REMOVED ITS VGSI DATA FOR RWY 24. NON-COINCIDENT NOTES NEED TO BE REMOVED FROM PROCEDURES. PFAF LOCATION ADJUSTMENT AND ADDITION OF INTERMEDIATE STEPDOWN.</p> <p>AMENDMENT COMPLETED USING PENDING NAVAID AND AIRPORT DATA.</p> <p>CONTACT ERIC SUSKI (AJV-A431) 405-954-7331</p> <div><div><p>Digitally signed by</p><p><b>ERIC N SUSKI</b></p><p>Oct 16, 2023</p></div><div><p>QUALITY 9 CHECKED BEGUE</p><p>QUALITY 35 CHECKED</p></div></div>					

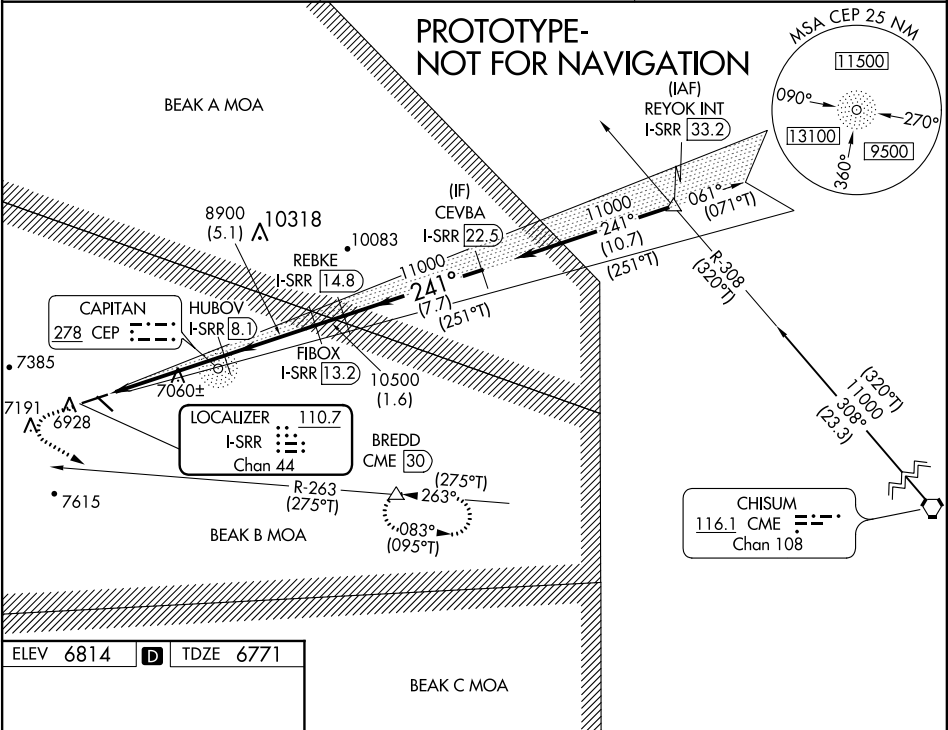
[illegible]

LOC/DME	I-SRR	APP CRS	Rwy Idg	8120
110.7		241°	TDZE	6771
Chan 44			Apt Elev	6814

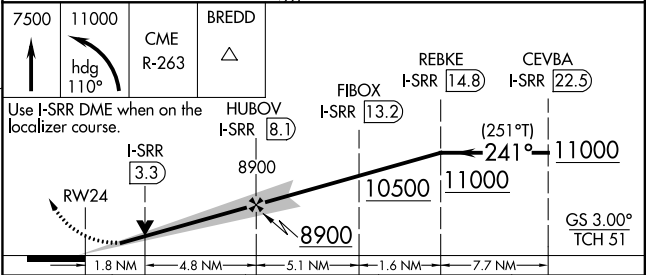
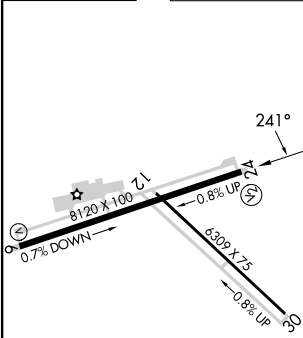
ILS or LOC RWY 24  
SIERRA BLANCA RGNL (SRR)

DME required.	MISSED APPROACH: Climb to 7500 then climbing left turn to 11000 on heading 110° and on CME VORTAC R-263 to BREDD/CME 30 DME and hold, continue climb-in-hold to 11000.
Circling Rwy 12 NA at night. When local altimeter setting not received, procedure NA.	

AWOS-3 126.475	ALBUQUERQUE CENTER 132.65 257.6	UNICOM 122.8 (CTAF) 0
-------------------	------------------------------------	--------------------------



ELEV 6814	TDZE 6771
-----------	-----------



MIRL Rwy 6-24 and 12-30
FAF to MAP 6.6 NM
Knots 60 90 120 150 180
Min:Sec 6:36 4:24 3:18 2:38 2:12

CATEGORY	A	B	C	D
S-ILS 24	6974-3/4	203 (200-3/4)		
S-LOC 24	7340-1	569 (600-1)	7340-1 5/8	569 (600-1 1/8)
CIRCLING	7340-1	526 (600-1)	7560-2 1/4 746 (800-2 1/4)	7920-3 1106 (1200-3)

**OLD** ILS or LOC/DME RWY 24  
SIERRA BLANCA RGNL (SBR)

**MISSED APPROACH:** Climb to 7500 then climbing left turn to 11000 via heading 110° and CME VORTAC R-263 to BREDD/CME 30 DME and hold, continue climb-in-hold to 11000.

RUIDOSO, NEW MEXICO  
Orig-A 25MAR21

33°28'N-105°32'W

SIERRA BLANCA RGNL (SR.R)  
ILS or LOC/DME RWY 24



AIRPORT ID: KSRR  
CITY/STATE: RUIDOSO, NM  
PROCEDURE: ILS OR LOC RWY 24  
FEEDER: CME TO REYOK  
INITIAL: REYOK TO CEVBA  
INTERMEDIATE:CEVBA-REBKE-FIBOX-HUBOV  
AMDT: 1  
SCALE: 1:500,000

CEVBA to REBKE TERRAIN+AAO (10194)  
TP1710493

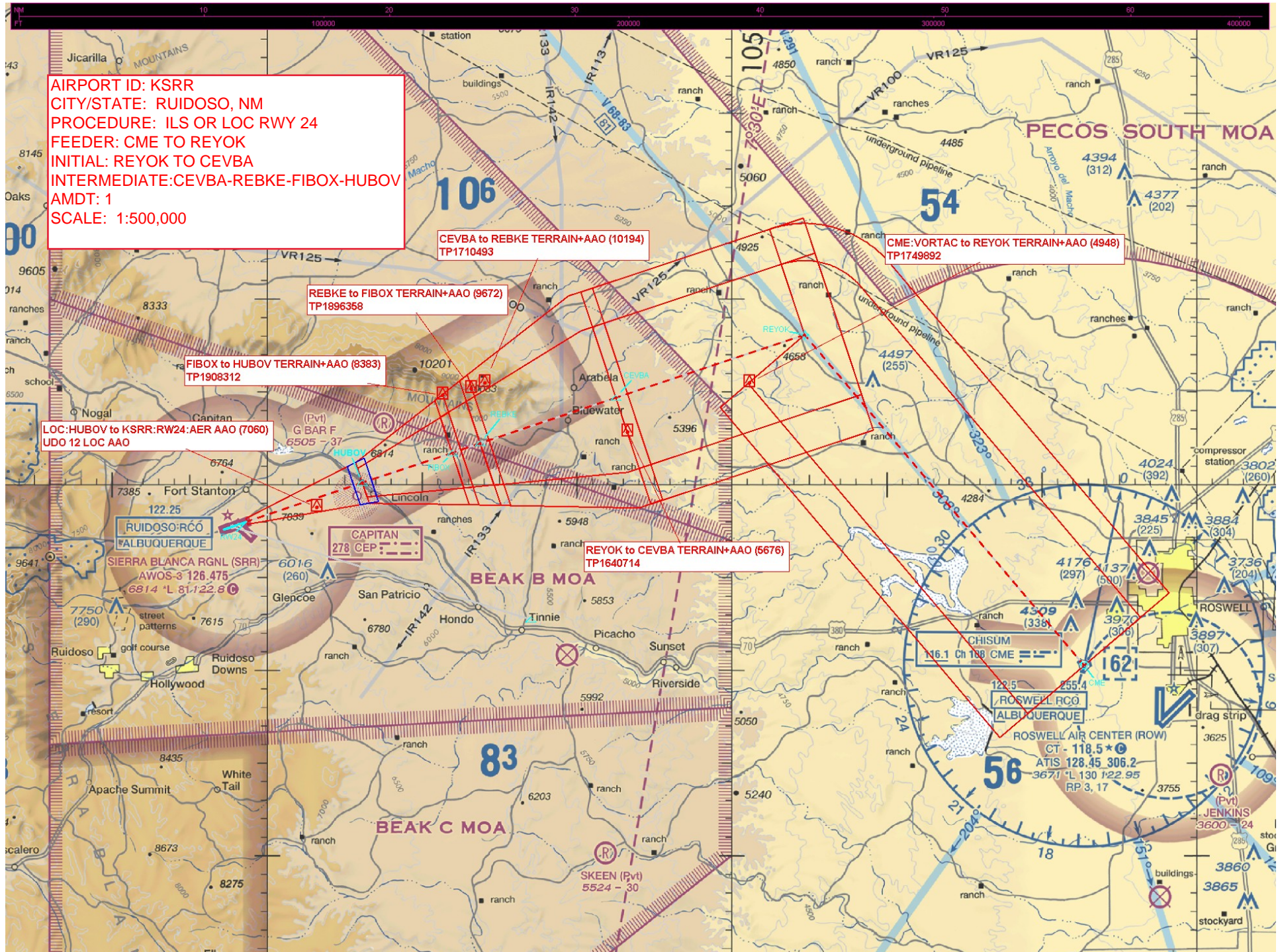
CME:VORTAC to REYOK TERRAIN+AAO (4948)  
TP1749892

REBKE to FIBOX TERRAIN+AAO (9672)  
TP1896358

FIBOX to HUBOV TERRAIN+AAO (8383)  
TP1908312

LOC:HUBOV to KSRR:RW24:AER AAO (7060)  
UDO 12 LOC AAO

REYOK to CEVBA TERRAIN+AAO (5676)  
TP1640714





AIRPORT ID: KSRR  
CITY/STATE: RUIDOSO, NM  
PROCEDURE: ILS OR LOC RWY 24  
MISSED AND MISSED HOLDING  
AMDT: 1  
SCALE: 1:500,000

LOC:HUBOV to KSRR:RW24:AER OTHER (7028)  
UDO 01 LOC AAO

Misssed Level Surface TERRAIN+AAO (7855)  
TP3605241

BREDD\_2 TERRAIN+AAO (6795)  
TerrainPoint\_T11P694

