

Flight Procedures Cover Page	Task Action: P-NOTAM	Task Type: IAP	Estimated Chart Date: 03/24/2022	APWS Task ID: E078FEB3788842878CD46CBC013834CE	APWS Project ID: 042E498743D3499EA206437D09AF7497
Procedure: RNAV (GPS) RWY 33 AMDT 1B		Enroute: NO	Specialist: Harris, Michael		Agreement Number:
Airport ID: KEQA			Airport City: EL DORADO		State: KS
Facility ID:	Facility Type:	Flight Inspection Remark Type:			
<p>Procedure Comments: PENDING RWY 33 VGSI DATA (TCH) REQUIRES NON-COINCIDENT NOTE REMOVAL.</p> <p>PROCESSED IAW TECHNICAL SUPPORT GROUP (AJF-17) MEMO DATED 07/07/2021, SUBJECT, GUIDANCE FOR PROCEDURAL CHANGES REQUIRING FLIGHT INSPECTION/VALIDATION.</p> <p>CONTACT ALLAN WILL, 405.954.6103.</p>					

07/18/2022

QUALITY
14
CHECKED

QUALITY
41
CHECKED

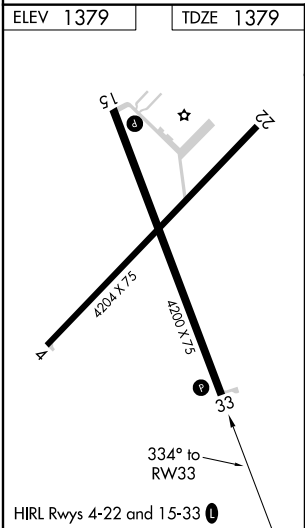
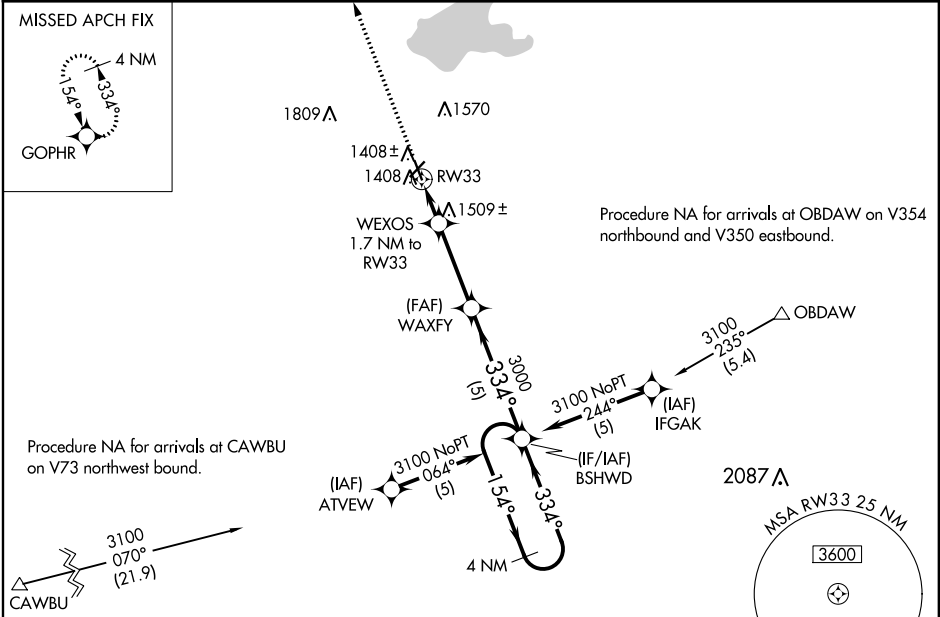
WAAS CH 70434 W33A	APP CRS 334°	Rwy Idg TDZE Apt Elev	4200 1379 1379
--	------------------------	-----------------------------	---

OLD

RNAV (GPS) RWY 33
EL DORADO/CAPT JACK THOMAS MEML (EQA)

V NA	For uncompensated Baro-VNAV systems, LNAV/VNAV NA below -17°C (2°F) or above 54°C (130°F). DME/DME RNP-0.3 NA. When local altimeter setting not received, use Colonel James Jabara altimeter setting and increase all DA 51 feet and all MDA 60 feet. Baro-VNAV and VDP NA when using Colonel James Jabara altimeter setting.	MISSED APPROACH: Climb to 3100 direct GOPHR and hold.
-----------------------	---	---

AWOS-3P 120.875	WICHITA APP CON 134.8 269.1	UNICOM 122.8 (CTAF) 0
---------------------------	---------------------------------------	---------------------------------



ELEV 1379	TDZE 1379
VGSI and RNAV glidepath not coincident. (VGSI Angle 3.00/TCH 25)	
3100	GOPHR
* LNAV only.	
WEXOS 1.7 NM to RW33	
RW33	
1.1 NM to RW33	
1960*	
3000	
WAXFY	
3000	
BSHWD	
4 NM Holding Pattern	
154°	
334°	
3100	
GP 3.00° TCH 40	
CATEGORY	A B C D
LPV DA	1 579-1 200 (200-1) NA
LNAV/VNAV DA	1 629-1 250 (300-1) NA
LNAV MDA	1 760-1 381 (400-1) NA
CIRCLING	1 820-1 441 (500-1) 1 960-1 581 (600-1) NA

NC-2, 02 DEC 2021 to 30 DEC 2021

NC-2, 02 DEC 2021 to 30 DEC 2021