

Flight Procedures Cover Page	Task Action: FLIGHT CHECK	Task Type: IAP	Estimated Chart Date: 04/20/2023	APWS Task ID: E04AB413B3754A1E9298EA95D3F07266	APWS Project ID: 0C591F96011D461AAAEF26B2E9FBA535
Procedure: RNAV (GPS) RWY 5 AMDT 0D		Enroute: NO	Specialist: Thibodeaux, Charles		Agreement Number:
Airport ID: KMQI			Airport City: MANTEO		State: NC
Facility ID:	Facility Type:	Flight Inspection Remark Type: New FC Slot			
<div>Procedure Comments: ADD CIRCLING RESTRICTIONS CRC CHANGED CONTACT JASON KRETSCHMER: 405.954.4019</div> <div><div>Digitally signed by JASON KRETSCHMER Dec 14, 2022</div><div><div>QUALITY 10 CHECKED</div><div>QUALITY 38 CHECKED</div></div></div>					

FIPC BASIC FORM						
PROCEDURE: RNAV (GPS) RWY 5 AMDT 0D			AIRPORT NAME: DARE COUNTY RGNL		AIRPORT ID: KMQI	SPECIAL CONTROL NO: AG-12-172-22
FAC ID: KMQI05		CITY: MANTEO			ST: NC	ORIG CHART DATE: 04/20/2023
DFL TYPE: PROC/S	THIRD PARTY: <input type="checkbox"/> YES	EST. TIME ON SITE: 0.4	REIMB. NUMBER:	PTS TASK ID: E04AB413B3754A1E9298EA95D3F07266		
PREFLIGHT NOTES						
REVIEWER:					DATE:	
COMMENTS:					CHECK ONE:	
					<input type="checkbox"/> FLT CK REQ <input type="checkbox"/> NFCR <input type="checkbox"/> REJECT	
						YES
					CPV COMPLETE?	X
PROCEDURE RESULTS						
INSPECTION DATE: 01/24/2023	CREW #: VN137	N #: N77	INSTRUMENT PROCEDURE STATUS: <input checked="" type="checkbox"/> SAT <input type="checkbox"/> SAT W/CHANGES <input type="checkbox"/> UNSAT		ARINC CODING: <input checked="" type="checkbox"/> SAT <input type="checkbox"/> SAT/GOLD <input type="checkbox"/> UNSAT	
FLIGHT INSPECTOR SIGNATURE: bob s pressler @ 01/24/2023 15:26			PRINTED NAME: PRESSLER, ROBERT STEPHEN			NOTAM INITIATED? <input type="checkbox"/> YES <input checked="" type="checkbox"/> NO
FLIGHT INSPECTOR REMARKS: SAT.						
IN-FLIGHT OBSTACLE REPORT						
OBSTRUCTION ID #:	COORDINATES OR LOCATION:	GNSS ALTITUDE (MSL):	BAROMETRIC ALTITUDE (MSL):		HEIGHT ABOVE GROUND LEVEL:	

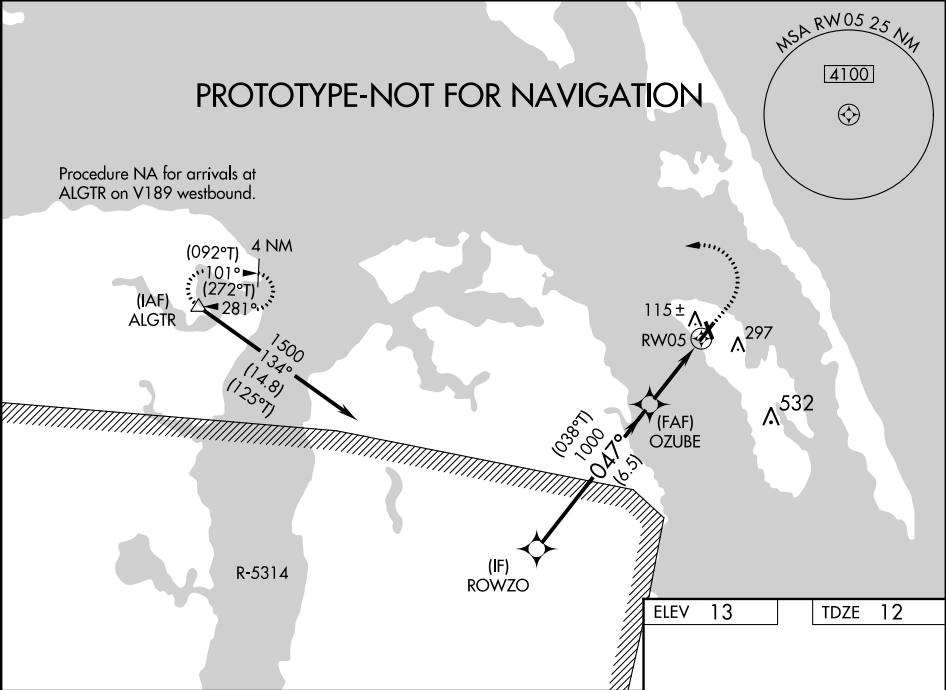
WAAS CH 72626 W05A	APP CRS 047°	Rwy Idg TDZE Apt Elev	4001 12 13
--	------------------------	-----------------------------	---------------------------------------

RNAV (GPS) RWY 5

DARE COUNTY RGNL (MQI)

RNP APCH-GPS.	MISSED APPROACH: Climb to 500 then climbing left turn to 3000 direct ALGTR and hold.
<div><div></div><div></div></div> <div>Circle Rwy 17, 23, 35 NA at night. For uncompensated Baro-VNAV systems, LNAV/VNAV NA below -5°C or above 54°C.</div>	

AWOS-3 128.275	CHERRY POINT APP CON 124.725 350.35	UNICOM 122.8 (CTAF) 0
--------------------------	---	---------------------------------



VGSI and RNAV glidepath not coincident (VGSI Angle 3.00/TCH 28).				
ROWZO		500	3000	ALGTR
1500		<div><div></div><div></div><div></div></div>		
GP 3.00° TCH 45		<div><div>038°T</div><div>047°</div><div>1000</div><div>OZUBE</div><div>1.3 NM to RW05</div><div>RW05</div><div>6.5 NM</div><div>1.7 NM</div><div>1.3 NM</div></div>		
CATEGORY	A	B	C	D
LPV DA	262-3/4	250 (300-3/4)		NA
LNAV/VNAV DA	347-1	335 (400-1)		NA
LNAV MDA	460-1	448 (500-1)	460-1 3/8 448 (500-1 3/8)	NA
CIRCLING	600-1	587 (600-1)	600-1 1/2 587 (600-1 1/2)	NA
<div><div>REIL Rwy 5 0</div><div>MIRL Rwy 5-23 and 17-35 0</div></div>				

OLD

MANTEO, NORTH CAROLINA

AL-6372 (FAA)

22139

WAAS CH 72626 W05A	APP CRS 047°	Rwy Idg TDZE 12 Apt Elev 13	4000
--	------------------------	---	-------------

RNAV (GPS) RWY 5

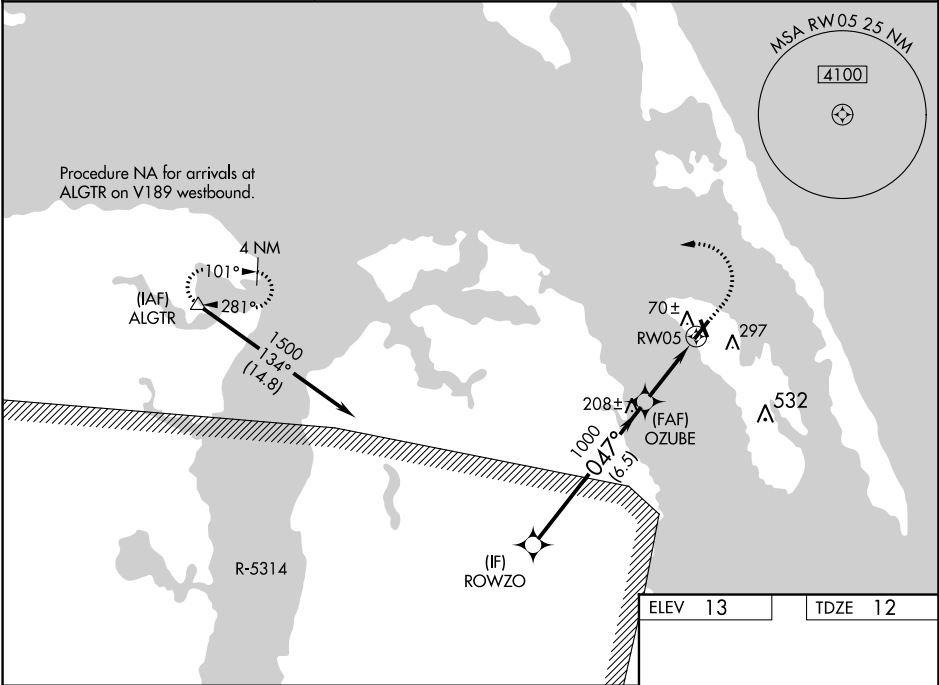
DARE COUNTY RGNL (MQI)

RNP APCH-GPS.

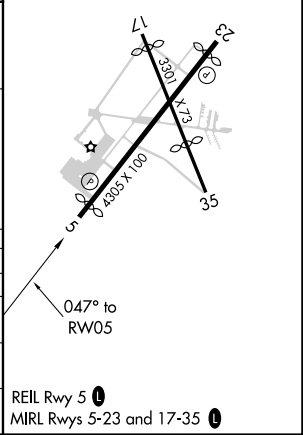
⚠ For uncompensated Baro-VNAV systems, LNAV/VNAV NA below -5°C or above 54°C. When local altimeter setting not received, use Elizabeth City altimeter setting and increase all DA 72 feet and all MDA 80 feet; increase LPV all Cnts visibility $\frac{3}{8}$ mile; increase LNAV/VNAV all Cnts visibility $\frac{1}{4}$ mile; increase LNAV Cat C visibility $\frac{1}{8}$ mile. Baro-VNAV and VDP NA when using Elizabeth City altimeter setting. Circling Rwy 17, 35 NA at night.

MISSED APPROACH: Climb to 500 then climbing left turn to 3000 direct ALGTR and hold.

AWOS-3 128.275	CHERRY POINT APP CON 124.725 350.35	UNICOM 122.8 (CTAF) 0
--------------------------	---	---------------------------------



VGSi and RNAV glidepath not coincident (VGSi Angle 3.00/TCH 28).				
ROWZO				
1500				
GP 3.00° TCH 45				
047°				
1000				
OZUBE				
1000				
* 0.9 NM to RW05				
RW05				
* LNAV only.				
6.5 NM 2.1 NM 0.9 NM				
CATEGORY	A	B	C	D
LPV DA	262- $\frac{3}{4}$	250 (300- $\frac{3}{4}$)		NA
LNAV/VNAV DA	347-1 $\frac{1}{8}$	335 (400-1 $\frac{1}{8}$)		NA
LNAV MDA	460-1	448 (500-1)	460-1 $\frac{3}{8}$ 448 (500-1 $\frac{3}{8}$)	NA
CIRCLING	600-1	587 (600-1)	600-1 $\frac{1}{2}$ 587 (600-1 $\frac{1}{2}$)	NA



MANTEO, NORTH CAROLINA
Orig-C 19MAY22

35°55'N-75°42'W

DARE COUNTY RGNL (MQI)
RNAV (GPS) RWY 5

SE-2, 06 OCT 2022 to 03 NOV 2022

SE-2, 06 OCT 2022 to 03 NOV 2022

