

Flight Procedures Cover Page	Task Action: Abbreviated Amendment	Task Type: IAP	Estimated Chart Date: 12/26/2024	APWS Task ID: E034F6DC7C5C457EA9504766DCF556A5	APWS Project ID: CB7BE25950B8499F9B5714C0DDCC795D
Procedure: LDA RWY 11 AMDT 16A		Enroute: NO	Specialist: Tuttle, Judith		Agreement Number:
Airport ID: PASI			Airport City: SITKA		State: AK
Facility ID: SIT	Facility Type: LOC	Flight Inspection Remark Type:			
<div>Procedure Comments:</div> <div>ACTIVE DATA USED FOR AIRPORT AND RUNWAYS.</div> <div>REMOVED ALTERNATE MISSED APPROACH - SIT NDB DECOMMISSIONING.</div> <div>CONTACTS: ERIC SUSKI (AJV-A431), 405.954.7331</div> <div>PROCESSED IAW TECHNICAL SUPPORT GROUP (AJF-17) MEMO DATED 07/07/2021, SUBJECT: GUIDANCE FOR PROCEDURAL CHANGES REQUIRING FLIGHT INSPECTION/ VALIDATION.</div> <div><div>QUALITY 41 CHECKED</div><div>QUALITY 34 CHECKED</div></div>					

23334

LDA RWY 11  
SITKA ROCKY GUTIERREZ (SIT)(PASI)

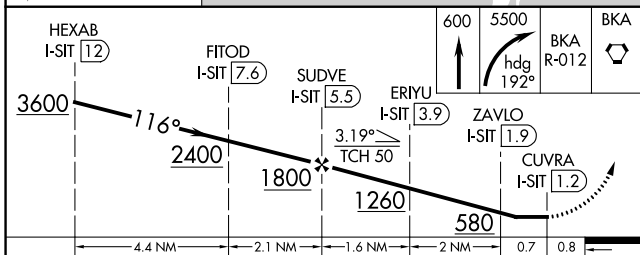
**MISSED APPROACH:** Climb to 600 then climbing right turn to 5500 on heading 192° and BKA VORTAC R-012 to BKA VORTAC and hold, continue climb-in-hold to 5500.

The chart displays a complex network of flight paths across the Sea of Japan. Key elements include:

- Top Left:** A compass rose showing headings of 090°, 310°, and 270°. A circular inset labeled "MSA BKA 25 NM" contains altitudes of 6500 and 1600.
- Top Center:** A shaded area labeled "HOLD 5000" with altitudes of 2000, 3350, and 1550. Nearby are labels for "BKA R-335", "IAF CLUCK", and "BKA (30)".
- Center:** A large curved path labeled "BKA (20) Arc" with altitudes of 5500, 3600, and 2250. Other labels include "ICILI BKA (20)", "IR-327", "1608", "R-318", "FITOD I-SIT (7.6)", "SUDVE I-SIT (5.5)", "ERIJU I-SIT (3.9)", and "ZAVLO I-SIT (1.9)".
- Bottom Left:** Labels for "(IAF) JETUT BKA (20)", "(IAF) KOYEG BKA (1.5)", and "R-303".
- Bottom Center:** A box labeled "LOCALIZER I-SIT 108.9 Chan 26".
- Bottom Right:** A dashed line leading to a point labeled "216".
- Right Side:** Various altitudes and labels like "5096", "4955", "3226", "CUVRA I-SIT (1.2)", "3976", and "2805".
- Top Right:** A legend for "ALTERNATE MISSED APCH FIX" showing a circular arrow and a dot. Labels include "SITKA", "SIT", and "358".

Procedure NA for arrival on BKA Vortac airway radial 347.

ELEV 27	<b>D</b>	TDZE 24
---------	----------	---------



CATEGORY	A	B	C	D
S-11	520-1	496 (500-1)	520-1 $\frac{3}{8}$	496 (500- $\frac{1}{8}$ )
<b>C</b> CIRCLING	520-1	493 (500-1)	540-1 $\frac{1}{2}$ 513 (600-1 $\frac{1}{2}$ )	1500-3 1473 (1500-3)

REIL Rwy 11-29

REIL Rwy 11-29

200X 150

116°

SITKA ROCKY GUTIERREZ (SIT)(PASI)  
LDA RWY 11

57°03'N-135°22'W

AK, 16 MAY 2024 to 11 JUL 2024