

Flight Procedures Cover Page	Task Action: FLIGHT CHECK	Task Type: IAP	Estimated Chart Date: 09/08/2022	APWS Task ID: 0D0E9F57D8DF4BE3AFD38AB25F8A5D99	APWS Project ID: 84B17D8C98A3448F871F81C8008EA848
Procedure: VOR RWY 7 AMDT 14B		Enroute: NO	Specialist: Jackson, Frank		Agreement Number:
Airport ID: KART			Airport City: WATERTOWN		State: NY
Facility ID: ART	Facility Type: VORTAC	Flight Inspection Remark Type: New FC Slot			
<p><b>Procedure Comments:</b>          PROCESSED IAW TECHNICAL SUPPORT GROUP (AJF-17) MEMO DATED 07/07/2021 GUIDANCE FOR PROCEDURAL CHANGES REQUIRING FLIGHT INSPECTION/VALIDATION.</p> <p>NEW CIRCLING CRITERIA APPLIED, EXPANDING CIRCLING RADII AND CONTROLLING OBSTACLES FLIGHT CHECKED SAT ON 11/29/17 REFERENCE ILS OR LOC RWY 7, AMDT 8. NEW CIRCLING RADII: CAT A: 1.30, CAT B: 1.82, CAT C: 2.85, CAT D: 3.73.</p> <p>THIS CANCELS: FDC 1/2755.          CONTACT: DON LANIER, AJV-A430 LEAD, 405.954.6141.</p>					



4/26/22 J. DuBois



WATERTOWN, NEW YORK

AL-666 (FAA)

21224

VORTAC ART <b>109.8</b> Chan 35	APP CRS <b>043°</b>	Rwy Idg TDZE Apt Elev <b>4784</b> <b>319</b> <b>325</b>
---------------------------------------	------------------------	--

**OLD**

**VOR RWY 7**  
WATERTOWN INTL (ART)

<b>ASOS</b> <b>132.325</b>	<b>GTB ATIS</b> <b>119.525</b>	<b>WHEELER-SACK APP CON</b> <b>124.875 257.6</b>	<b>CLNC DEL</b> <b>120.8</b>	<b>UNICOM</b> <b>123.0 (CTAF)</b>
-------------------------------	-----------------------------------	---	---------------------------------	--------------------------------------

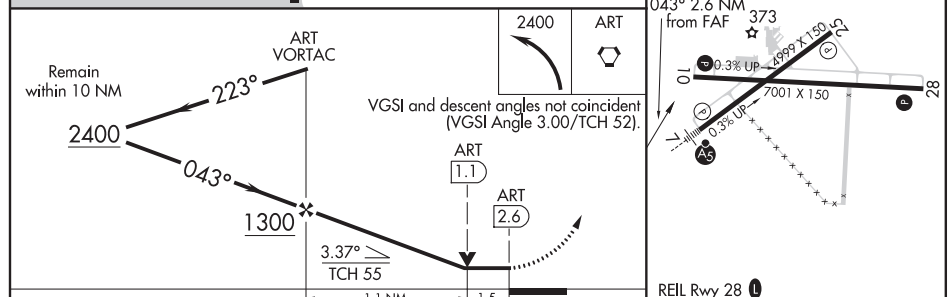
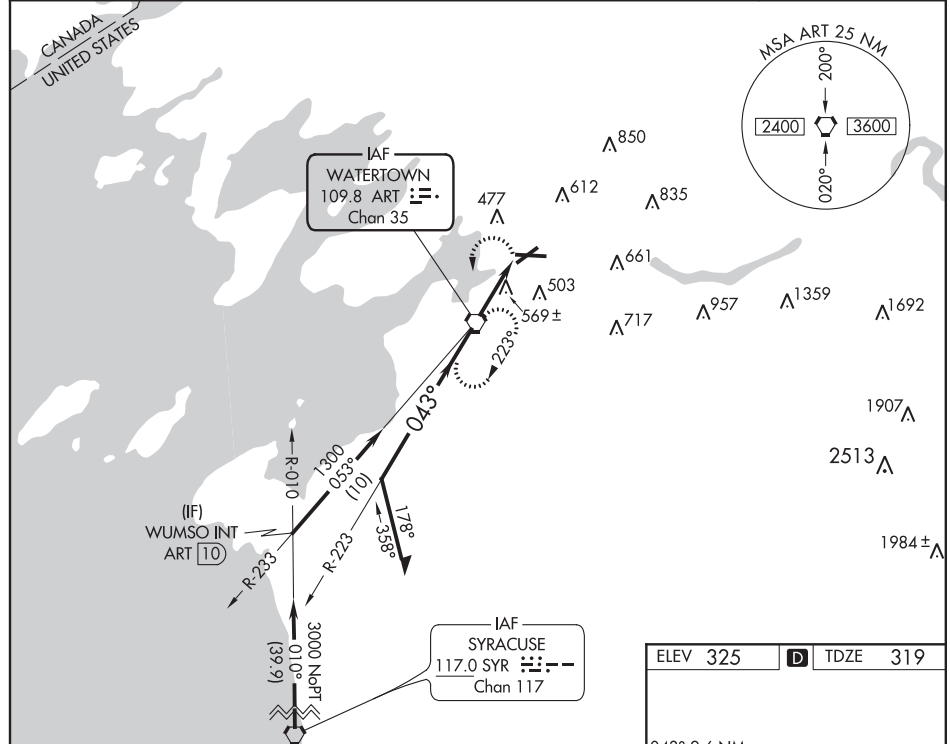
**INOPERATIVE** table does not apply. When VGSI inop, Circling Rwy 10 NA at night. Helicopter visibility reduction below ¼ SM NA.

MALSR

**MISSED APPROACH:** Climbing left turn to 2400 direct ART VORTAC and hold, continue climb-in-hold to 2400.

NE-2, 24 FEB 2022 to 24 MAR 2022

NE-2, 24 FEB 2022 to 24 MAR 2022



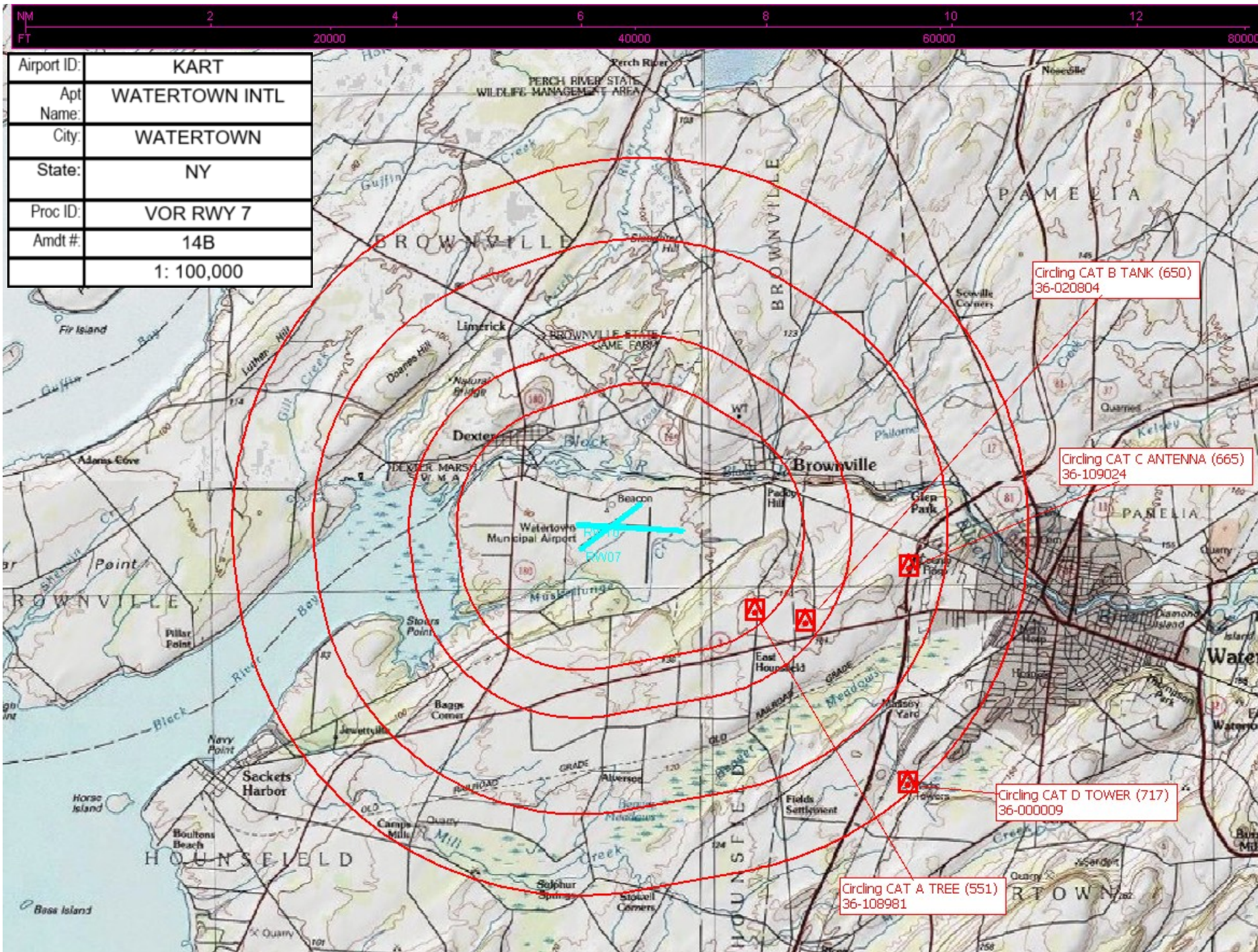
CATEGORY	A	B	C	D
S-7	840-1 521 (600-1)		840-1½ 521 (600-1½)	
CIRCLING	960-1 635 (700-1)		980-1¾ 655 (700-1¾)	1000-2¼ 675 (700-2¼)

WATERTOWN, NEW YORK  
Amdt 14A 26JUN14

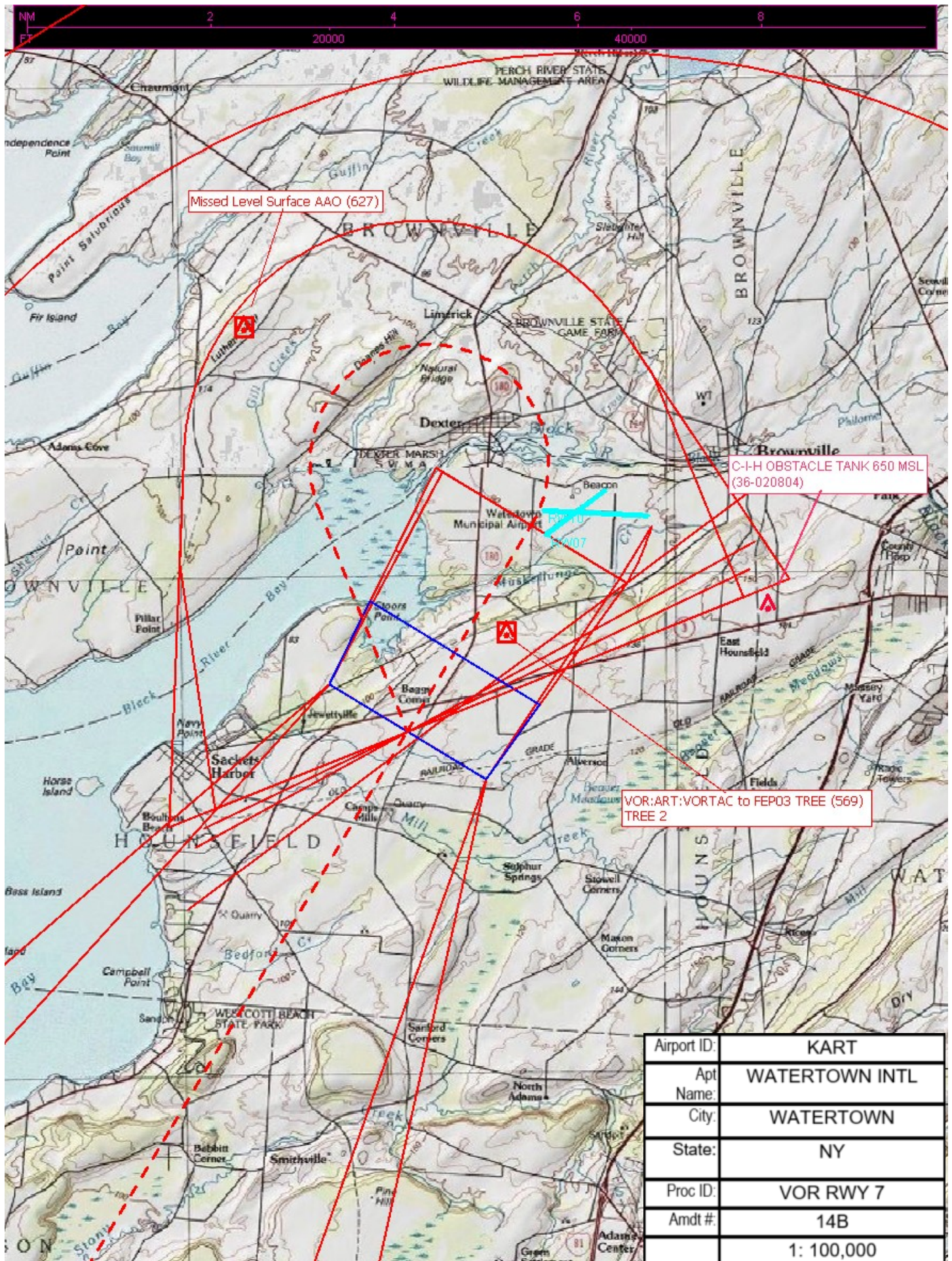
44°00'N-76°01'W

**WATERTOWN INTL (ART)**  
**VOR RWY 7**









Airport ID:	KART
Apt Name:	WATERTOWN INTL
City:	WATERTOWN
State:	NY
Proc ID:	VOR RWY 7
Amdt #:	14B
	1: 100,000



