

Flight Procedures Cover Page	Task Action: P-NOTAM	Task Type: IAP	Estimated Chart Date: 06/17/2021	APWS Task ID: DF8B1A7F8C1F477FAFC0B36B89B8CAA8	APWS Project ID: 462F6DF93B9547649FFB329EF8595945
Procedure: VOR RWY 17 AMDT 2A		Enroute: NO	Specialist: Cannon, Brett		Agreement Number:
Airport ID: KSLN			Airport City: SALINA		State: KS
Facility ID:	Facility Type:	Flight Inspection Remark Type:			
<div>Procedure Comments: P-NOTAM</div> <div>This Cancels FDC 0/2600</div> <div>Order 8260.3, chapter 2, New Circling Criteria Applied</div> <div>Contact Dave Teffeteller at 202-267-5177</div> <div>QUALITY 18 CHECKED</div> <div>QUALITY 26 CHECKED</div>					

SALINA, KANSAS

AL-362 (FAA)

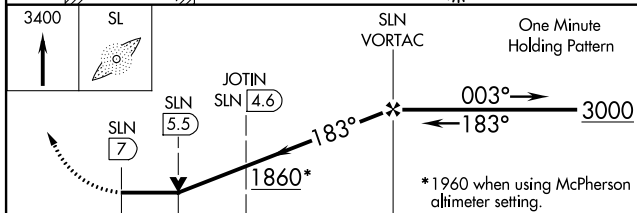
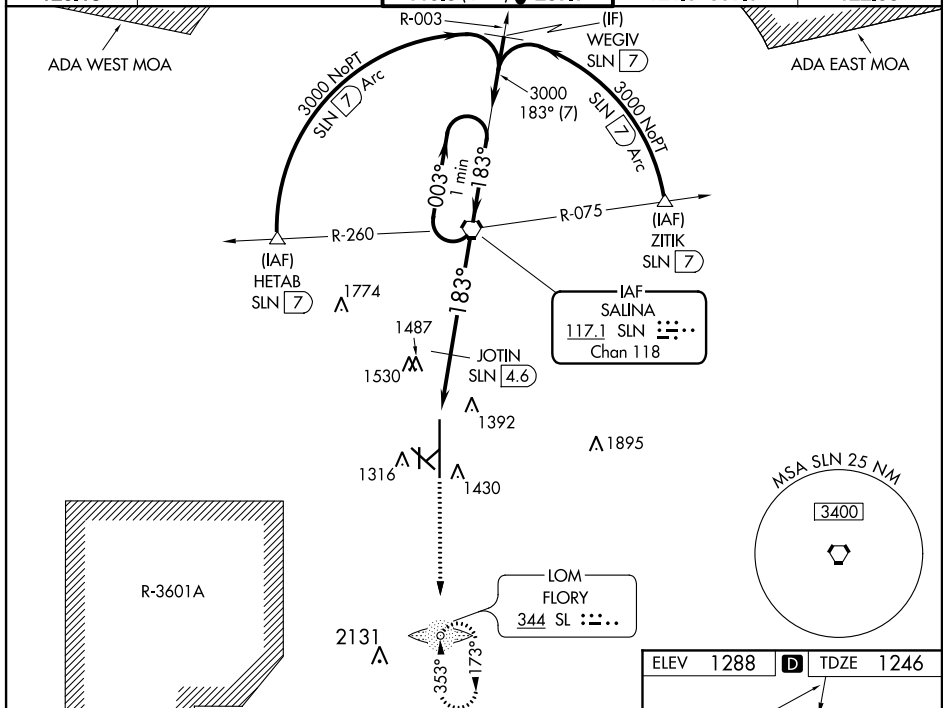
19339

VORTAC SLN	APP CRS	Rwy Idg	12300
117.1	183°	TDZE	1246
Chan 118		Apt Elev	1288

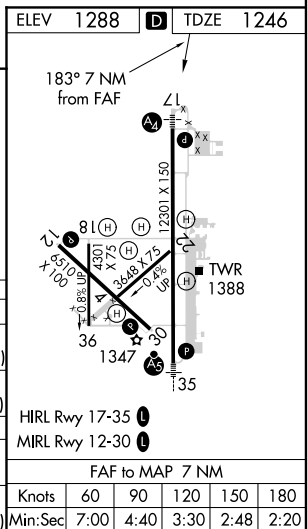
VOR RWY 17
SALINA RGNL (SLN)

<p>⚠ Inoperative table does not apply to Cat C/D/E. Circling NA for Cat D/E southwest of Rwy 12-30. ADF required. When local altimeter setting not received, use McPherson altimeter setting and increase all MDA 100 feet and Cat C/D/E visibility ¼ mile and increase JOTIN fix minimums S-17 Cat C/D visibility ½ mile, Cat E visibility ½ mile, Circling Cat C/E visibility ¼ mile. VDP NA when using McPherson altimeter setting.</p>	<p>MALS</p> <p>A4</p>	<p>MISSED APPROACH: Climb to 3400 direct SL LOM and hold.</p>
---	------------------------------	---

ATIS 120.15	KANSAS CITY CENTER 134.9 363.2	SALINA TOWER * 119.3 (CTAF) 0 257.7	GND CON 121.9 397.9	UNICOM 122.95
----------------	-----------------------------------	--	------------------------	------------------



CATEGORY	A	B	C	D	E
S-17	1860-¾ 614 (600-¾)		1860-1¾ 614 (600-1¾)	1860-2 614 (600-2)	1860-2¼ 614 (600-2¼)
CIRCLING	1860-1 572 (600-1)		1860-1¾ 572 (600-1¾)	1860-2 572 (600-2)	1920-2¼ 632 (700-2¼)
JOTIN FIX MINIMUMS					
S-17	1760-¾ 514 (500-¾)		1760-1½ 514 (500-1½)	1760-1¾ 514 (500-1¾)	
CIRCLING	1820-1 532 (600-1)		1840-1½ 552 (600-1½)	1840-2 552 (600-2)	1920-2¼ 632 (700-2¼)



SALINA, KANSAS
Amdt 2 20NOV08

38°47'N-97°39'W

SALINA RGNL (SLN)
VOR RWY 17

NC-2, 28 JAN 2021 to 25 FEB 2021

