

Flight Procedures Cover Page	Task Action: FLIGHT CHECK	Task Type: IAP	Estimated Chart Date: 12/02/2021	APWS Task ID: DEE060BB5112458F9DB3D99EC252A7A8	APWS Project ID: FC8D6427C1864D28AF3242A830FED323
Procedure: RNAV (GPS) RWY 33 AMDT 0B		Enroute: NO	Specialist: Copeland, Guy		Agreement Number:
Airport ID: 96D			Airport City: WALHALLA		State: ND
Facility ID:	Facility Type:	Flight Inspection Remark Type: New FC Slot			
<p>Procedure Comments: ABBREVIATED AMENDMENT</p> <p>Contact Dave Teffeteller at 202-267-5177</p> <p>On 12/15/20 N86 Palmer K96D R33 PROC/G B-06-433-20: Circling radius/obstacle flown SAT</p> <p>Processed IAW Technical Support Group (AJF-17) Memo dated 07/07/2021, Subject: Guidance for Procedural Changes Requiring Flight Inspection/Validation</p>					



10/12/21 J. DuBois



OLD

WALHALLA, NORTH DAKOTA


AL-9442 (FAA)


16119

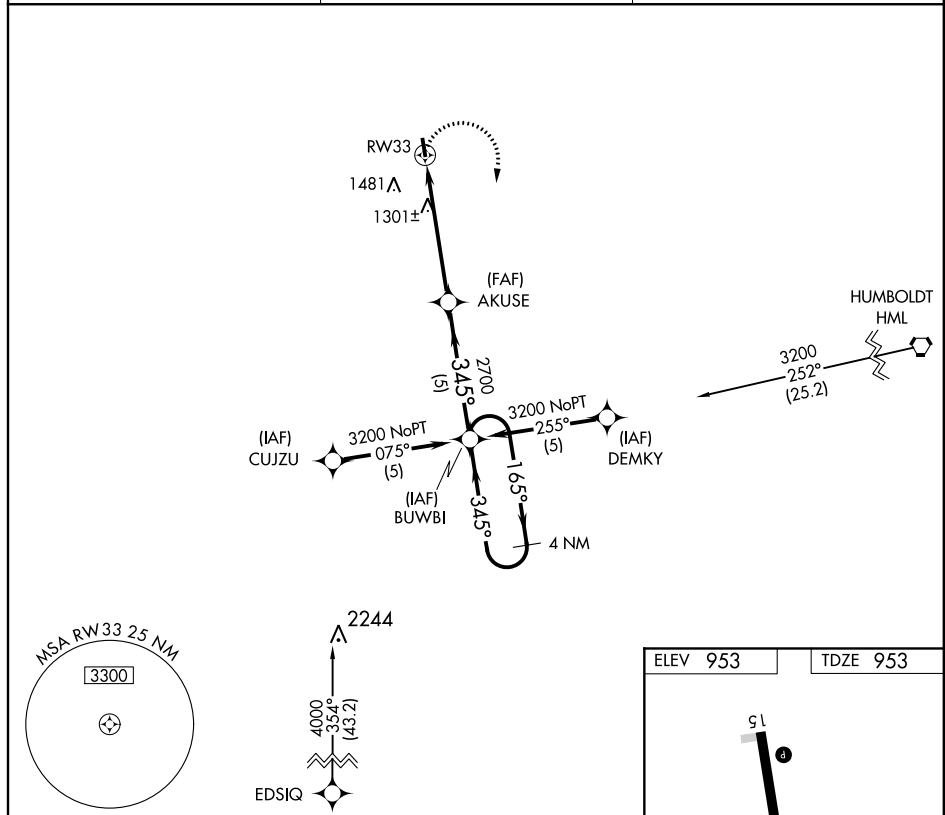
APP CRS	Rwy Idg	3400
345°	TDZE	953
	Apt Elev	953



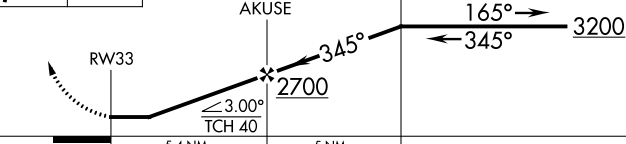
RNAV (GPS) RWY 33

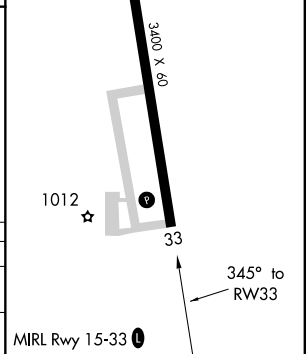
WALHALLA MUNI (96D)

 NA	Use Hallock Muni altimeter setting. DME/DME RNP-0.3 NA. Helicopter visibility reduction below 3/4 SM NA.	MISSED APPROACH: Climbing right turn to 3200 direct BUWBI WP and hold.
---	--	---

AWOS-3PT 118.175	MINNEAPOLIS CENTER 132.15 269.6	CTAF 122.9 
---------------------	------------------------------------	---



<div>3200</div> <div></div>	<div>BUWBI</div> <div></div>	VGSI and descent angles not coincident (VGSI Angle 3.00/TCH 28).		<div>4 NM</div> <div>Holding Pattern</div>
<div></div>				
CATEGORY	A	B	C	D
LNAV MDA	1680-1	727 (800-1)	NA	
CIRCLING	1680-1	727 (800-1)	NA	



WALHALLA, NORTH DAKOTA

Orig-A 28APR16

48°56'N-97°54'W

RNAV (GPS) RWY 33

NC-1, 28 APR 2016 to 26 MAY 2016

NC-1, 28 APR 2016 to 26 MAY 2016

WALHALLA, NORTH DAKOTA

AL-9442 (FAA)

FIG

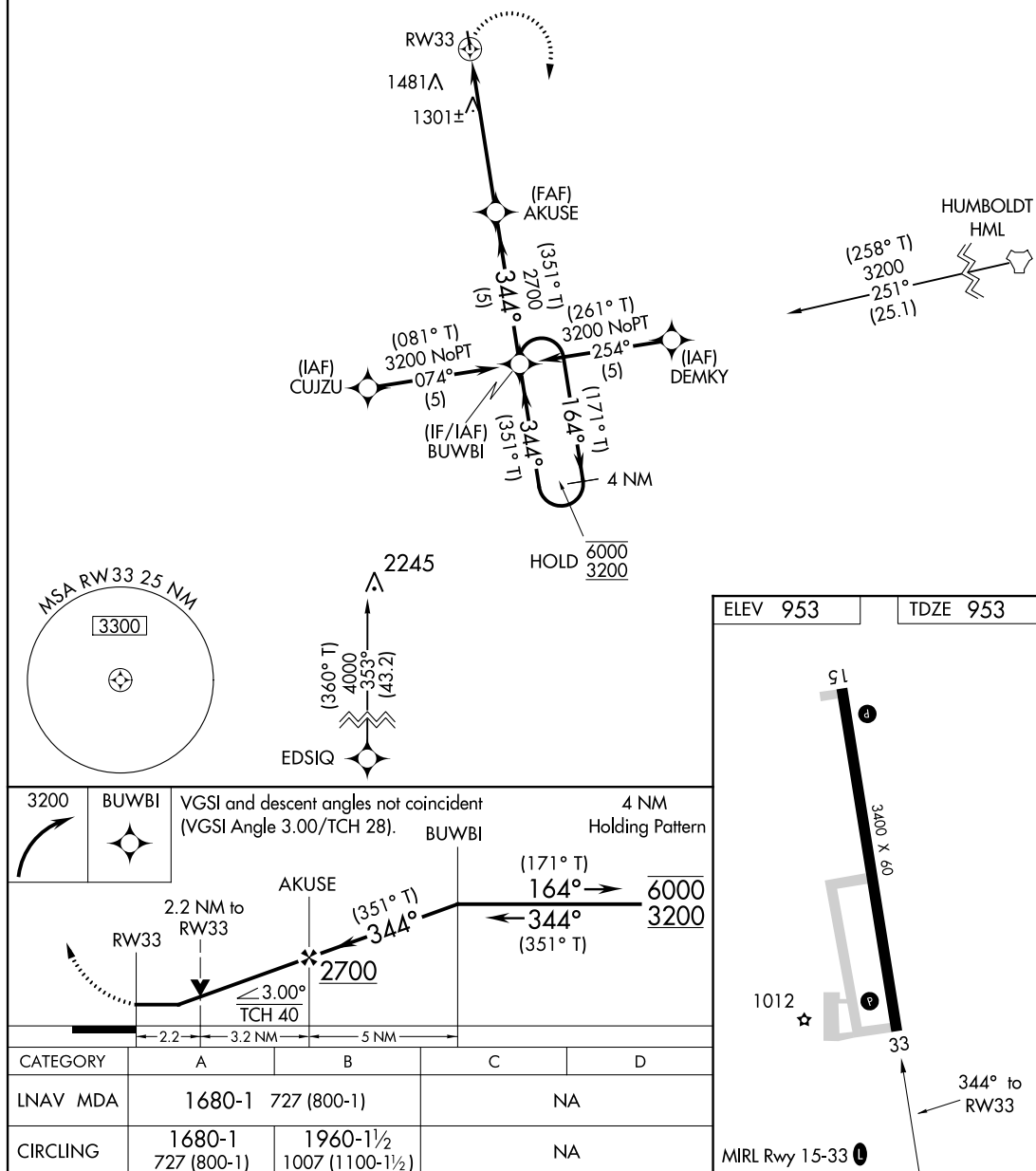
APP CRS	Rwy Idg	3400
344°	TDZE	953
	Apt Elev	953

RNAV (GPS) RWY 33

WALHALLA MUNI (96D)

RNP APCH - GPS.		MISSED APPROACH: Climbing right turn to 3200 direct BUWBI and hold.
▼ Rwy 33 helicopter visibility reduction below $\frac{3}{4}$ SM NA. ▲ When local altimeter setting not received, use Hallock altimeter setting.		
AWOS-3PT 118.175	MINNEAPOLIS CENTER 132.15 269.6	CTAF 122.9

PROTOTYPE: NOT
FOR NAVIGATION



AUTOMATED AL-9442 RNAV (GPS) RWY 33

NC-1

27 SEPT 2021

COMPILER: CG

REVIEWER:

DBL CHKR:

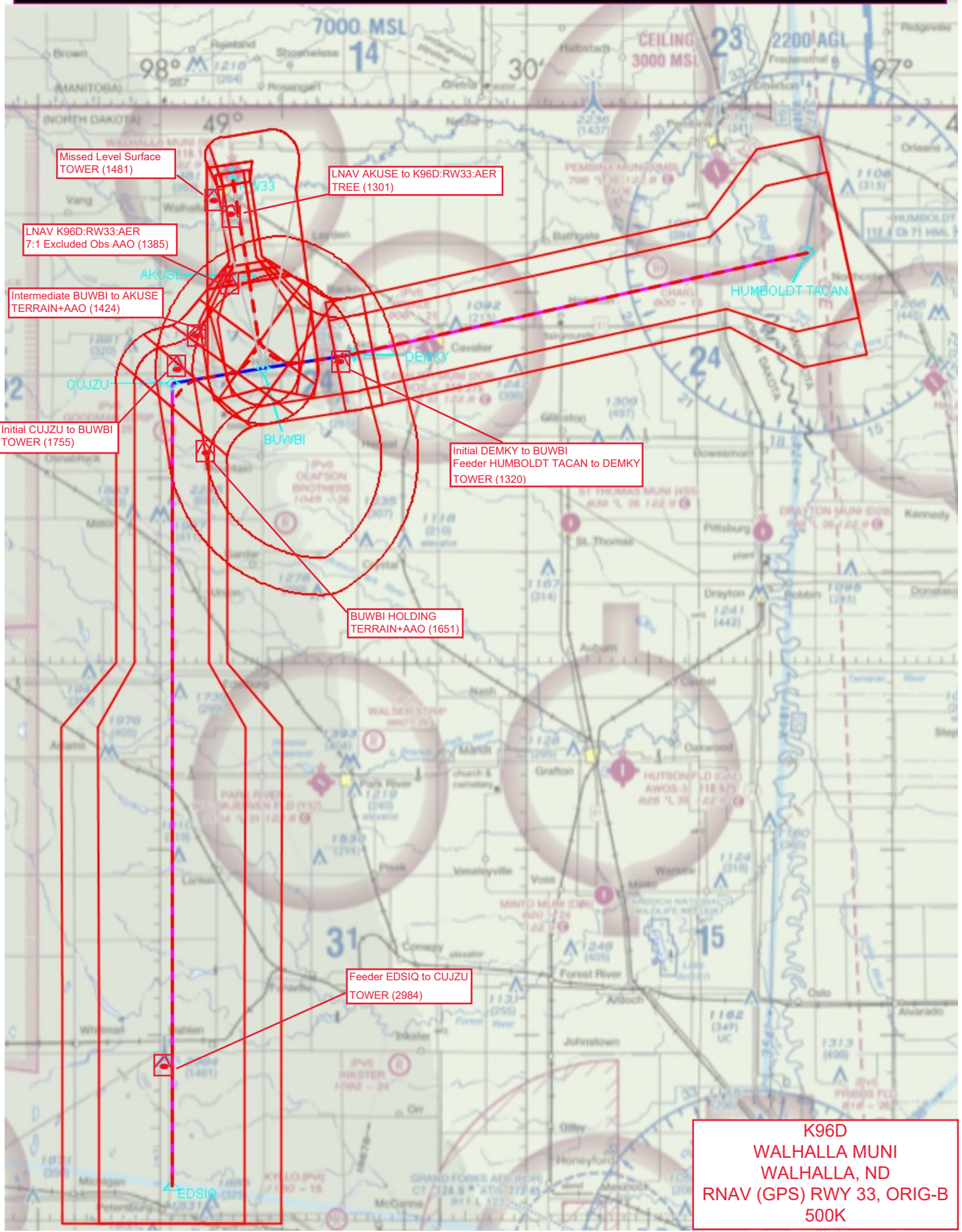
EFF DATE: FIG

WALHALLA, NORTH DAKOTA

Orig-B FIG

48°56'N-97°54'W

WALHALLA MUNI (96D)
RNAV (GPS) RWY 33



K96D
WALHALLA MUNI
WALHALLA, ND
RNAV (GPS) RWY 33, ORIG-B
500K

40000

[illegible]