



Flight Procedures Cover Page	Task Action: P-NOTAM	Task Type: IAP	Estimated Chart Date: 12/29/2022	APWS Task ID: DE7D1F0B51414E86867F52DB1C5A35DD	APWS Project ID: EB85B49E3475497F8F3EAC7CE16D5DCE
Procedure: RNAV (GPS) RWY 9L AMDT 0B		Enroute: NO	Specialist: Marsh, Andre		Agreement Number:
Airport ID: KSEE			Airport City: SAN DIEGO/EL CAJON		State: CA
Facility ID:	Facility Type:	Flight Inspection Remark Type:			
<p>Procedure Comments: P-NOTAM</p> <p>Processed IAW Technical Support Group (AJF-17) Memo dated 07/07/2021 Guidance for Procedural Changes Requiring Flight Inspection/Validation</p> <p>CONTACT JASON KRETSCHMER, AJV-A421, 405-954-4019</p> <p style="text-align: center;"><i>Digitally signed by</i> <b>JASON KRETSCHMER</b> Oct 28, 2022</p> <div style="text-align: right; margin-top: 200px;">   </div>					

# INFORMATION ONLY

SAN DIEGO/EL CAJON, CALIFORNIA

AL-5402 (FAA)

22139

APP CRS	Rwy Idg	<b>5342</b>
<b>089°</b>	TDZE	<b>379</b>
	Apt Elev	<b>388</b>

## RNAV (GPS) RWY 9L

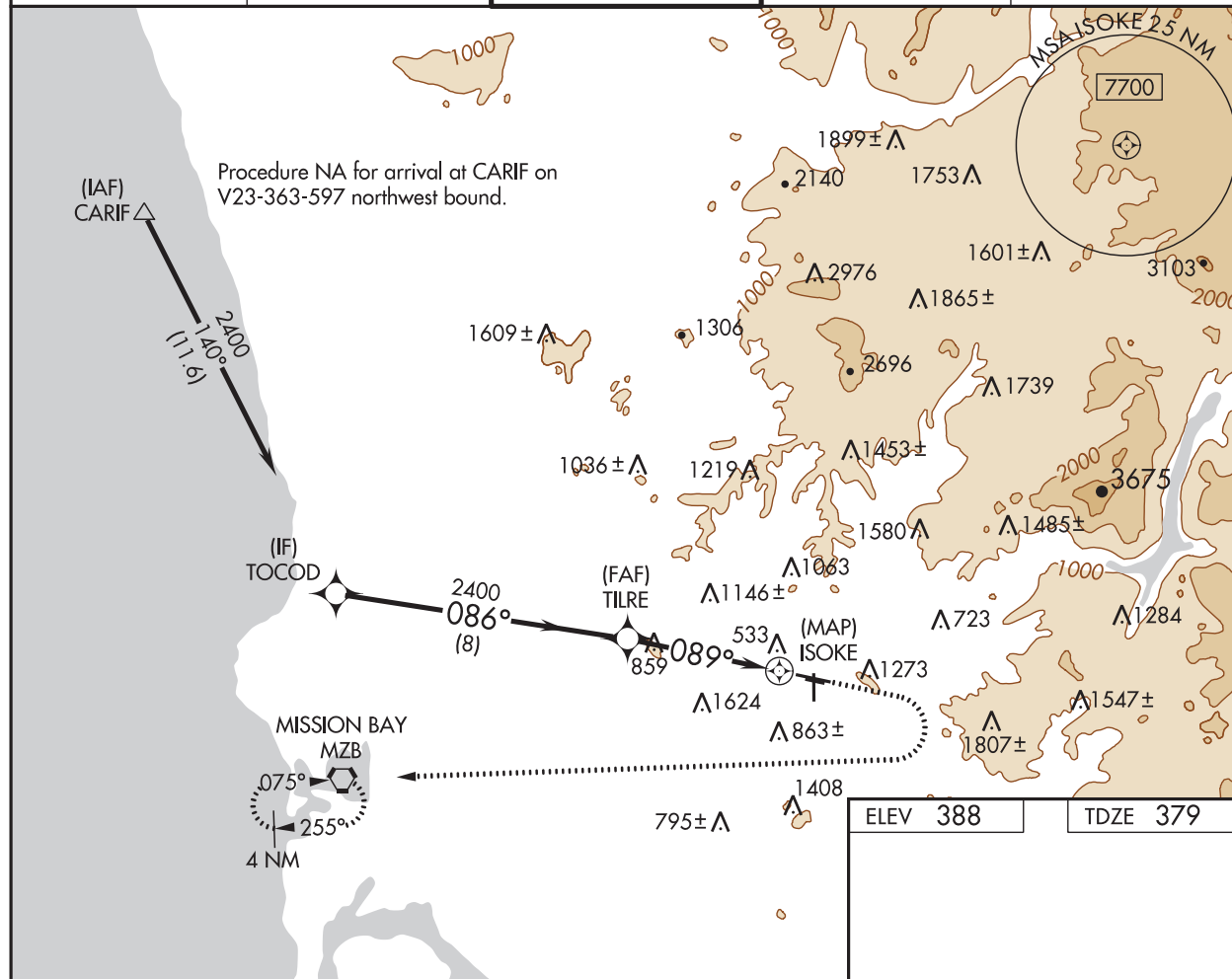
GILLESPIE FLD (SEE)

RNP APCH.

**▼** For uncompensated Baro-VNAV systems, LNAV/VNAV NA below 5°C or above 14°C. Circling NA northeast of Rwy 17 and 27R.  
**▲** Circling Rwy 27R, 35 NA at night. Rwy 9L helicopter visibility reduction below 1 SM NA.

MISSED APPROACH: Climb to 1900 then climbing right turn to 2700 direct MZB VORTAC and hold.

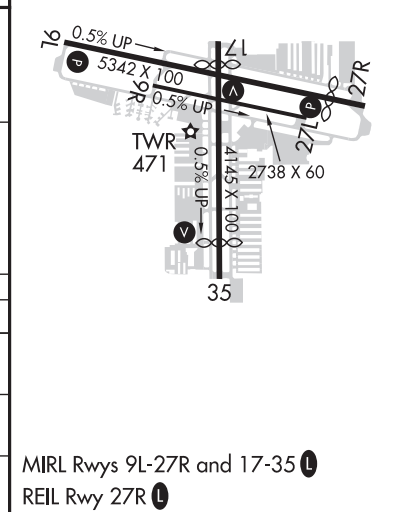
ATIS <b>125.45</b>	SOCAL APP CON <b>124.35 279.625</b>	GILLESPIE TOWER★ <b>120.7 (CTAF) 0 257.8</b>	GND CON <b>121.7</b>	CLNC DEL <b>125.1</b>
-----------------------	--	---	-------------------------	--------------------------



SW-3, 06 OCT 2022 to 03 NOV 2022

SW-3, 06 OCT 2022 to 03 NOV 2022

TOCOD	TILRE	1900	2700	MZB
2400	2400	086°	089°	
GP 4.00°				
TCH 41				
	8 NM	4.2 NM	0.5	
CATEGORY	A	B	C	D
LNAV/VNAV DA	1350-3	971 (1000-3)	NA	
LNAV MDA	1720-1¼ 1341 (1400-1¼)	1720-1½ 1341 (1400-1½)	NA	
CIRCLING	1720-1¼ 1332 (1400-1¼)	1720-1½ 1332 (1400-1½)	NA	



SAN DIEGO/EL CAJON, CALIFORNIA

Orig-A 20JUN19

32°50'N-116°58'W

GILLESPIE FLD (SEE)

## RNAV (GPS) RWY 9L