

Flight Procedures Cover Page	Task Action: FLIGHT CHECK	Task Type: SID	Estimated Chart Date: 08/10/2023	APWS Task ID: DE2AAB1541C64174918B37623F94B658	APWS Project ID: C17A806355614A709A64CE26D8F4A600
Procedure: SID ROYAL ONE KANSAS CITY MO KMKC		Enroute: YES	Specialist: Mitchell, Tyler		Agreement Number:
Airport ID: KMKC			Airport City: KANSAS CITY		State: MO
Facility ID:	Facility Type:	Flight Inspection Remark Type: New FC Slot			
<p>Procedure Comments:</p> <p>Processed IAW Technical Support Group (AJF-17) Memo dated 07/07/2021, Subject: Guidance for Procedural Changes Requiring Flight Inspection/Validation.</p> <p>Abbreviated amendment to add TOP ALTITUDE 10,000 and change MKC RWY 3/21 to 4/22.</p> <p>Contact Casimir Tabaka: 405-954-7931</p> <div><div>QUALITY 41 CHECKED</div><div>QUALITY 8 CHECKED</div></div>					



ROYAL NINE DEPARTURE  
(ROYAL9.MCI) 01FEB18

CHARLES B WHEELER DOWNTOWN (MKC)  
KANSAS CITY, MISSOURI

ATIS  
120.75  
CLNC DEL  
121.9

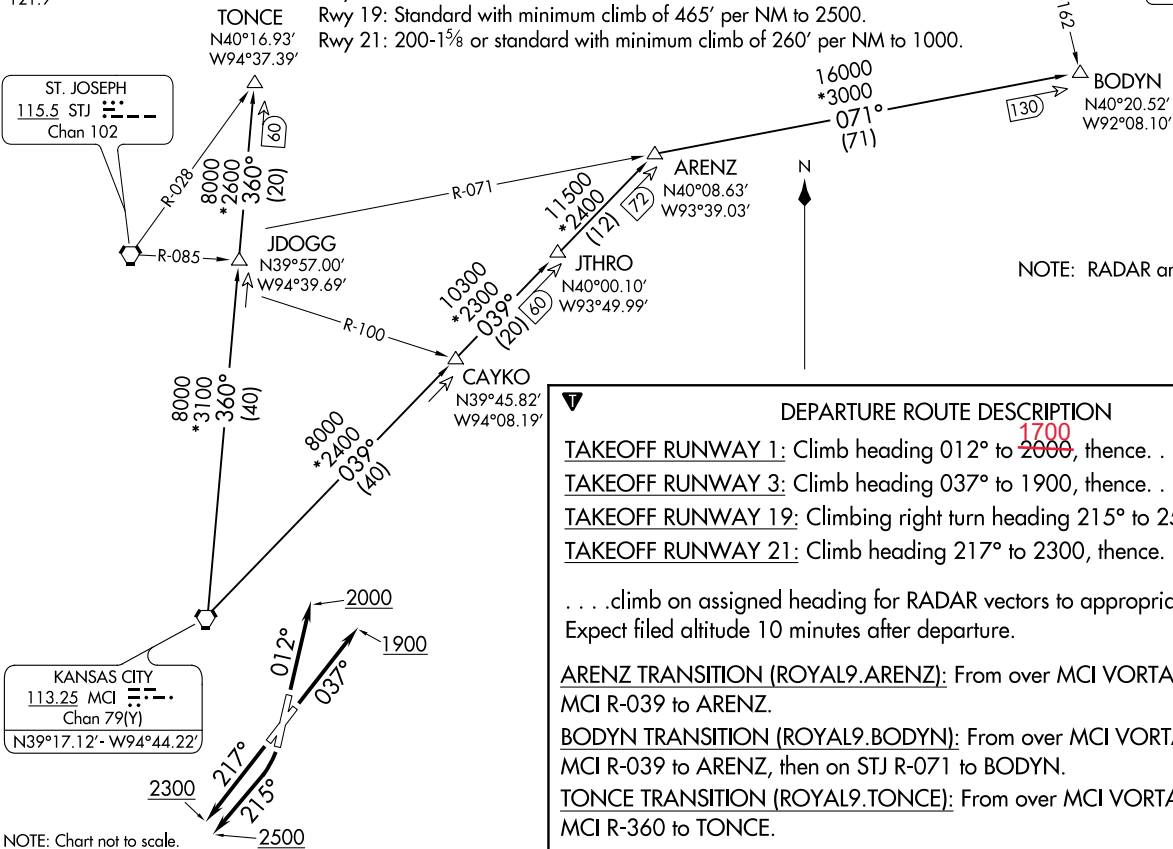
ST. JOSEPH  
115.5 STJ  
Chan 102

KANSAS CITY  
113.25 MCI  
Chan 79(Y)  
N39°17.12' - W94°44.22'

NOTE: Chart not to scale.

# TAKEOFF MINIMUMS

Rwy 1: 300-1 $\frac{1}{8}$  or standard with a minimum climb of ~~312' per NM to 1000.~~  
Rwy 3: Standard.  
Rwy 19: Standard with minimum climb of 465' per NM to 2500.  
Rwy 21: 200-1 $\frac{1}{2}$  or standard with minimum climb of 260' per NM to 1000.



OTTUMWA  
111.6 OTM  
Chan 53

(ROYAL9.MCI) 20086  
ROYAL NINE DEPARTURE

AL-213 (FAA)

CHARLES B WHEELER DOWNTOWN (MKC)  
KANSAS CITY, MISSOURI

## DEPARTURE ROUTE DESCRIPTION

TAKEOFF RUNWAY 1: Climb heading 012° to 2000, then...  
TAKEOFF RUNWAY 3: Climb heading 037° to 1900, then...  
TAKEOFF RUNWAY 19: Climbing right turn heading 215° to 2500, then...  
TAKEOFF RUNWAY 21: Climb heading 217° to 2300, then...

...climb on assigned heading for RADAR vectors to appropriate route.  
Expect filed altitude 10 minutes after departure.

ARENZ TRANSITION (ROYAL9.ARENZ): From over MCI VORTAC on MCI R-039 to ARENZ.

BODYN TRANSITION (ROYAL9.BODYN): From over MCI VORTAC on MCI R-039 to ARENZ, then on STJ R-071 to BODYN.

TONCE TRANSITION (ROYAL9.TONCE): From over MCI VORTAC on MCI R-360 to TONCE.