


Flight Procedures Cover Page	Task Action: Amendment	Task Type: IAP	Estimated Chart Date: 08/13/2020	APWS Task ID: DD8C0C5C93994592B33084BAA7B08B8A	APWS Request ID: 28655F88DF9D4728A18CC5A99B4A5041
Procedure: RNAV (GPS) RWY 14 AMDT 1B		Enroute: NO	Specialist: McCarthy, Christopher		Agreement Number:
Airport ID: KMFD	Airport Name: MANSFIELD LAHM RGNL		Airport City: MANSFIELD		State: OH
Facility ID:	Facility Type:	Flight Inspection Remark Type:			
<div> <div> Procedure Comments: P-NOTAM NEW CIRCLING AREAS PROCESSED IAW AIRCRAFT OPERATIONS GROUP (AJW-33) MEMO, OCTOBER 3, 2018, SUBJECT: FLIGHT INSPECTION REVIEW NOT REQUIRED. DAVE DANNER, 405-954-5077 </div> <div>  </div> </div>					

WAAS
CH **53426**
W14A

APP CRS
143°

Rwy Idg
TDZE **1276**
Apt Elev **1297**

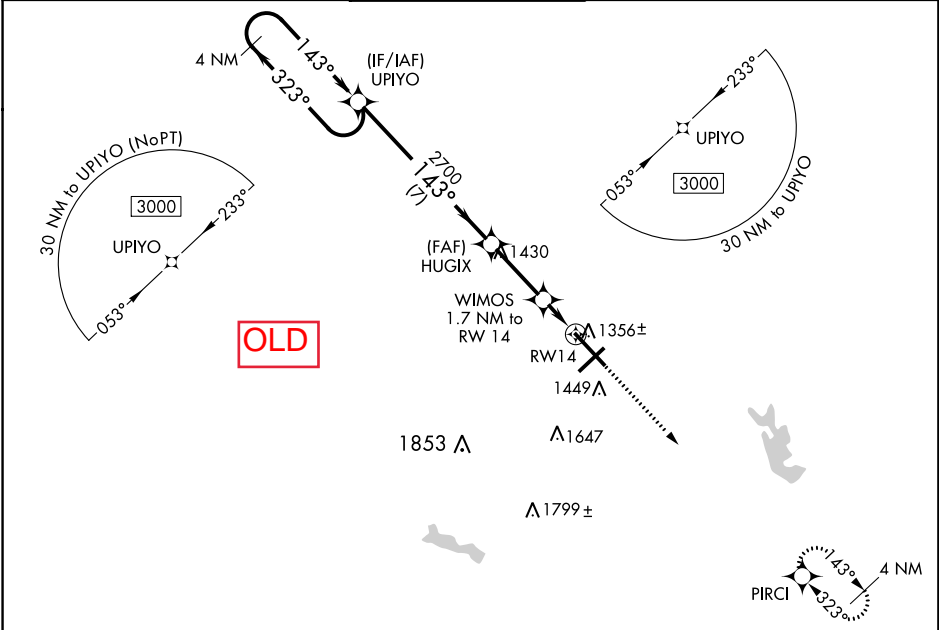
RNAV (GPS) RWY 14

MANSFIELD LAHM RGNL (MFD)

⚠ For uncompensated Baro-VNAV systems, LNAV/VNAV NA below -18°C (0°F) or above 36°C (96°F).
When local altimeter setting not received, use Marion altimeter setting and increase all DA 107 feet and all MDA 120 feet, and LPV all Cats visibility to 1 mile, LNAV/VNAV all Cats, and LNAV Cat C/D to 1 3⁄8 mile, and Circling Cat D to 2 1⁄4 mile. VDP and Baro-VNAV NA when using Marion altimeter setting.

MISSED APPROACH:
Climb to 3000 direct PIRCI and hold.

ATIS 125.3	CLEVELAND APP CON ★ 124.2 360.65	MANSFIELD TOWER ★ 119.8 (CTAF) 291.775	GND CON 121.8 291.775	UNICOM 122.95
----------------------	--	--	---------------------------------	-------------------------



ELEV 1297 D TDZE 1276

4 NM Holding Pattern UPIYO

3000 ← 323°
143° →

GP 3.00°
TCH 42

HUGIX 2700

WIMOS 1.7 NM to RWY14

*1 NM to RWY14

RWY14

*LNAV only.

3000 PIRCI

CATEGORY	A	B	C	D
LPV DA		1476-3⁄4	200 (200-3⁄4)	
LNAV/VNAV DA		1557-7⁄8	281 (300-7⁄8)	
LNAV MDA		1620-1	344 (400-1)	
CIRCLING	1760-1	463 (500-1)	1760-1 1⁄2 463 (500-1 1⁄2)	1880-2 583 (600-2)

143° to RWY14

0.85 Up

9001 X 150

8819 X 150

TWR 1409

1354

AS 32

HIRL Rwy 5-23 and 14-32

REIL Rwy 5 and 23

KMFD
MANSFIELD LAHM RGNL
RNAV (GPS) RWY 14
AMDT 1B
CIRCLING 100K

