


Flight Procedures Cover Page	Task Action: P-NOTAM	Task Type: IAP	Estimated Chart Date: 11/04/2021	APWS Task ID: DD2ADECA5D1C4896986F74475D3AF467	APWS Project ID: 3958138F85634A86B358A1D5679001C0
Procedure: RNAV (GPS)-F AMDT 0B		Enroute: NO	Specialist: Miller, Ralph		Agreement Number:
Airport ID: KASE			Airport City: ASPEN		State: CO
Facility ID:	Facility Type:	Flight Inspection Remark Type:			
<p>Procedure Comments: P-NOTAM.</p> <p>ORDER 8260.3, CHAPTER 2, NEW CIRCLING CRITERIA APPLIED</p> <p>ACTIVE DATA USED.</p> <p>CONTACT JASON KRETSCHMER, AJV-A421, 405-954-5077.</p> <div style="text-align: right;">  </div>					

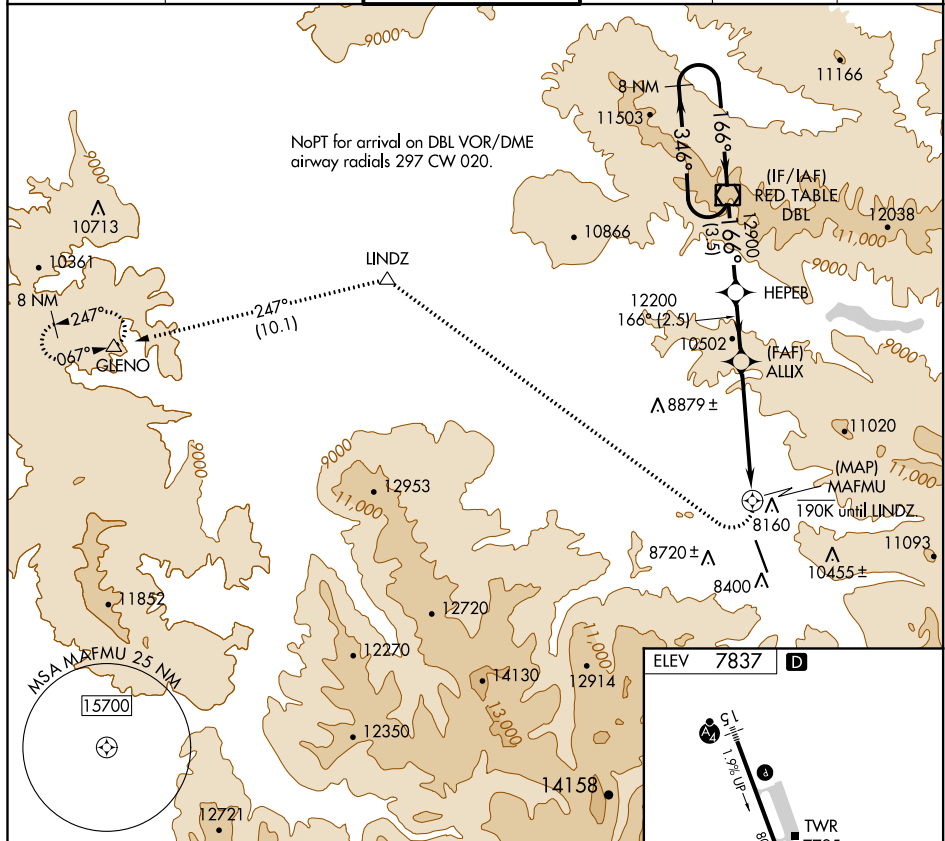
21168

# RNAV (GPS)-F

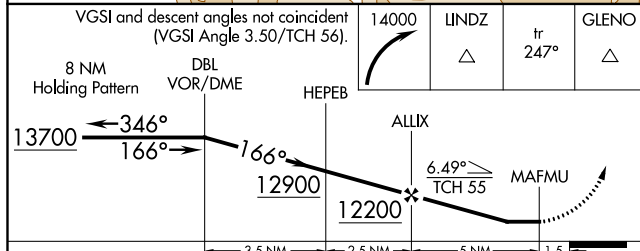
## ASPEN-PITKIN COUNTY/SARDY FLD (ASE)

MISSED APPROACH: Climbing right turn to 14000 direct LINDZ and on track 247° to GLENO and hold.

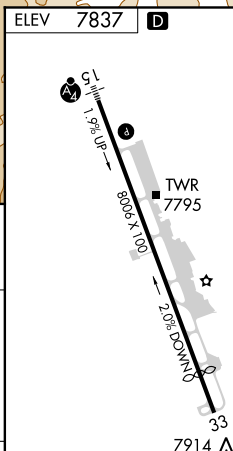
ATIS 120.4	ASPEN APP CON ★ 123.8 288.3	ASPEN TOWER ★ 118.85 (CTAF) 0 288.3	GND CON 121.9	CLNC DEL 123.75	UNICOM 122.95
---------------	--------------------------------	--	------------------	--------------------	------------------



VGSI and descent angles not coincident  
(VGSI Angle 3.50/TCH 56).



CATEGORY	A	B	C	D
CIRCLING	10200-1 $\frac{3}{4}$	2363 (2400-1 $\frac{3}{4}$ )	10220-3 2383 (2400-3)	NA



REIL Rwy 15  
REIL Rwy 33 **L**  
MIRL Rwy 15-33 **L**

ASPEN-PITKIN COUNTY/SARDY FLD (ASE)  
RNAV (GPS)-F

39°13'N-106°52'W



