

DME DME Assessment Results for SMLTZ3 path KATL:RW08L:DER_SMLTZ

Results Summary

Flyability:	Completed
DME/DME:	Completed - No Critical DMEs
Name:	David C-CTR Cook
Project File:	C:\Users\David C-CTR Cook\Documents\TARGETS STUFF\PROJECTS\ATL SIDs for 20220324\DME-DME\ATL SIDS\SMLTZ3\KATL SMLTZ3 (RNAV) SID_DME_210701.tgs
Output File:	C:\Users\David C-CTR Cook\Documents\TARGETS STUFF\PROJECTS\ATL SIDs for 20220324\DME-DME\ATL SIDS\SMLTZ3\KATL [IFPA] SMLTZ3 20210714_1741 EDT\KATL-RW08L-DER_SMLTZ\KATL SMLTZ3 SID KATL RW08L SMLTZ 20210714_1741 EDT.pdf
Procedure Name:	SMLTZ3
Software: DmeDmePlugin:	6.3.0
Date/Time:	07/14/2021 17:41 EDT
Databases:	DTED Level 0 MAX

Failures

No Failures

Warnings

No Warnings

Notes For Flight Check

None

Flight Plan

Name	Type	Lat/Lon	Altitude (ft)	VNAV Mode	Ground Speed (kts)	Turn Type	Leg Type
KATL:RW08L:DER	WP	N33° 38' 58.35", W084° 24' 34.03"	990	VNAV	130	FLY_OVER	TF
SKNNR_	WP	N33° 38' 04.43", W084° 20' 33.19"	1970	VNAV	200	FLY_BY	TF
GRITZ	WP	N33° 36' 07.72", W084° 16' 34.81"	2686.6	VNAV	200	FLY_BY	TF
HYZMN	WP	N33° 27' 25.15", W084° 16' 35.00"	4425.3	VNAV	250	FLY_BY	TF
TROFY_	WP	N33° 22' 51.22", W084° 15' 32.38"	5353.3	VNAV	250	FLY_BY	TF
SMLTZ	WP	N32° 59' 54.82", W084° 10' 21.22"	10000	VNAV	250	FLY_BY	TF
Climb Gradient: 500.0 ft/NM up to 1527.0 ft MSL 200.0 ft/NM							

Flyability

Flight Type:	SID
Selected Airport:	KATL [IFPA]
Climb Gradient:	500.0 ft/NM up to 1527.0 ft MSL 200.0 ft/NM
Speeds:	130 at the Runway DER
	145 at the end of the VA or VI leg
	200 Ground Speed to 11000 FT
	240 Ground Speed to 18000 FT
	260 Ground Speed to 24000 FT
	340 Ground Speed above 24000 FT
Descent During a Turn:	Allowed
VNAV Mode:	Flight Plan

DME DME Assessment Results for SMLTZ3 path KATL:RW08L:DER_SMLTZ

DME/DME	
RNP:	RNP 2
Flight Mode:	Manual
Line of Sight (DTED Level 0 Max):	Evaluated
Inertial Drift:	Enabled
Initial Drift:	0.558 NM
INS Drift Rate:	8.0 NM/Hour
Range Mode:	OSV
RNP Edges:	Evaluated
Min DME Range:	3.0 NM
DME Types:	DME, VOR-DME, VORTAC
DME Include Angles:	30 to 150
Critical DMEs:	Allowed
DoD Facilities:	Not included
Foreign Facilities:	Not included
High DMEs:	Included
Low DMEs:	Included
Terminal DMEs:	Included
Flight Check DMEs:	Not selected
Higher Altitudes:	Not Evaluated
Near Maximum Altitude:	Not Evaluated
Automatic ESVs:	Enabled
Disabled DMEs:	None

DME/DME (Continued)										
DMEs Used										
#	Name	Lat/Lon	MAGVAR	Range	Type	Source	Critical	Status	Time	Distance
1	LGC	N33° 02' 56.83", W085° 12' 22.40"	1.0 E	130	H	IFPA	NO	Enabled	61.9 %	68.3 %
2	ATL	N33° 37' 44.68", W084° 26' 06.23"	5.0 W	130	H	IFPA	NO	Enabled	91.8 %	94 %
3	PDK	N33° 52' 32.27", W084° 17' 55.73"	5.0 W	40	L	IFPA	NO	Enabled	65.7 %	65 %
4	PZD	N31° 39' 18.74", W084° 17' 35.16"	2.0 W	40	L	IFPA	NO	Enabled	27.7 %	30.7 %
5	VNA	N32° 12' 48.39", W083° 29' 50.12"	1.0 E	40	L	IFPA	NO	Enabled	18.3 %	20.3 %
6	AHN	N33° 56' 51.34", W083° 19' 29.13"	0.0 E	40	L	IFPA	NO	Enabled	48.7 %	53.7 %
7	DBN	N32° 33' 48.46", W082° 49' 48.16"	5.0 W	40	L	IFPA	NO	Enabled	15.2 %	16.9 %
8	RMG	N34° 09' 45.23", W085° 07' 09.87"	1.0 E	130	H	IFPA	NO	Enabled	12.2 %	13.1 %
9	MCN	N32° 41' 28.27", W083° 38' 49.86"	1.0 E	130	H	IFPA	NO	Enabled	13.9 %	15.4 %
10	IRQ	N33° 42' 26.47", W082° 09' 43.43"	4.0 W	130	H	IFPA	NO	Enabled	15.7 %	17.5 %

Flight Check DME Selection						
Distance [NM]	Selected DMEs					Alternate
0.0						
1.8	ATL	PDK				
14.0	AHN	ATL	LGC	RMG	PDK	
19.8	AHN	ATL	LGC	PDK		
30.4	LGC	ATL	AHN			
30.5	LGC	ATL	AHN	PZD		
35.1	AHN	VNA	LGC	ATL	PZD	
37.6	LGC	ATL	PZD	VNA	DBN	IRQ
43.2	PZD	LGC	DBN	MCN	VNA	IRQ

DME DME Assessment Results for SMLTZ3 path KATL:RW08L:DER_SMLTZ

Inertial Drift Segments

#	Start Location	End Location	Length [NM]
1	N33° 38' 58.35", W084° 24' 31.46"	N33° 38' 43.33", W084° 22' 31.23"	1.7174

Available DMEs by Waypoints

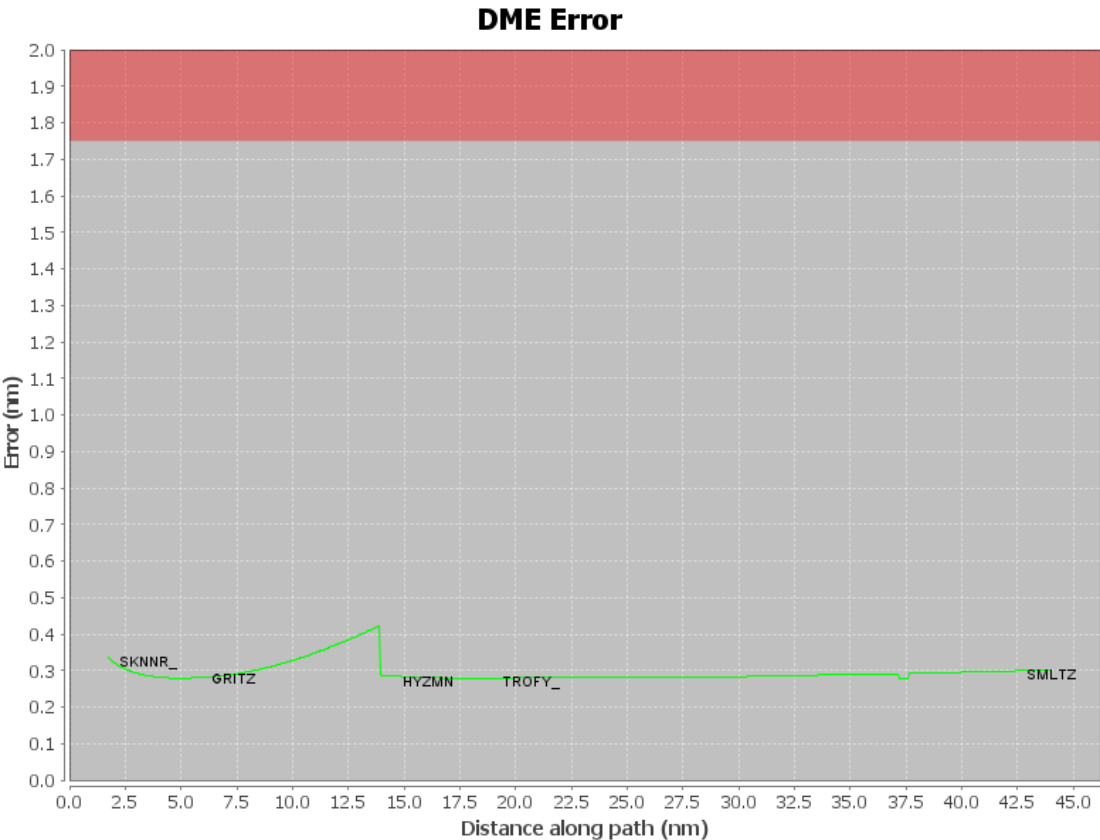
Waypoint Before	Waypoint After	DME List
KATL:RW08L:DER	SKNNR_	PDK, ATL
SKNNR_	GRITZ	PDK, ATL
GRITZ	HYZMN	PDK, AHN, ATL, LGC, RMG
HYZMN	TROFY_	PDK, AHN, ATL, LGC, RMG
TROFY_	SMLTZ	DBN, PDK, AHN, VNA, ATL, LGC, IRQ, MCN, PZD

User Data Files

#	File Name
1	KATL SMLTZ SID.udt
2	New Analysis.udt

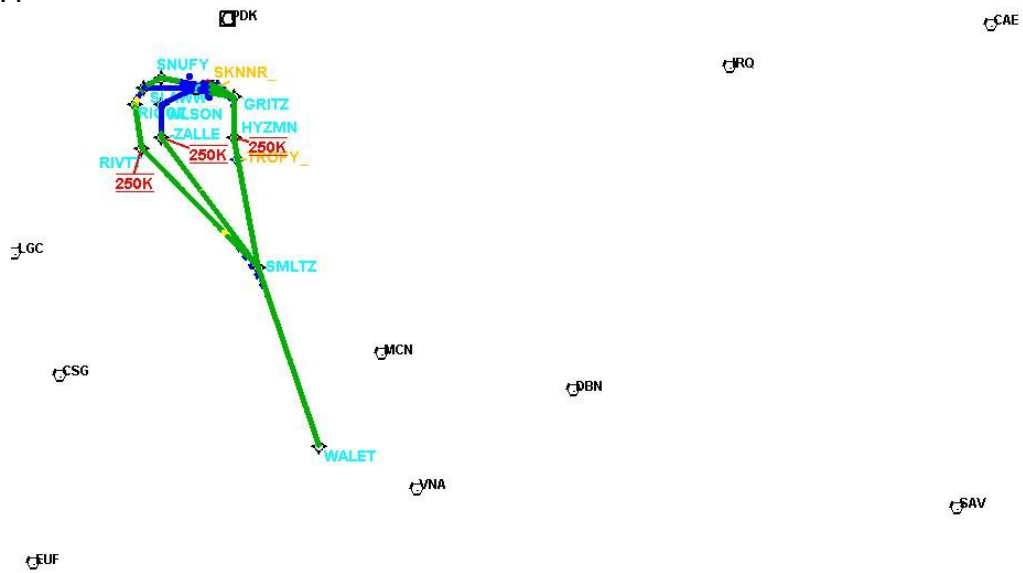
User DMEs

#	Name	Lat/Lon	MAGVAR	Range	Elevation [ft]	Frequency	Replaces	Status
1	UDT ESV RMG RMG [IFPA]	N34° 09' 45.23", W085° 07' 09.87"	1.0 E	130	1147.8	115.4	UDT ESV RMG	
ESV:		Bearing [True]: 120.0° to 160.0° Bearing [Mag]: 119.0° to 159.0°				Arc Distance: Out to 65.0 NM Altitude: 4000.0 to 14000.0 ft		
2	UDT ESV PZD PZD [IFPA]	N31° 39' 18.74", W084° 17' 35.16"	2.0 W	40	292	116.1	UDT ESV PZD	
ESV:		Bearing [True]: 358.0° to 28.0° Bearing [Mag]: 360.0° to 30.0°				Arc Distance: Out to 95.0 NM Altitude: 6000.0 to 15500.0 ft		
3	UDT ESV DBN DBN [IFPA]	N32° 33' 48.46", W082° 49' 48.16"	5.0 W	40	305.7	113.1	UDT ESV DBN	
ESV:		Bearing [True]: 255.0° to 305.0° Bearing [Mag]: 260.0° to 310.0°				Arc Distance: Out to 80.0 NM Altitude: 8500.0 to 16000.0 ft		
4	UDT ESV AHN AHN [IFPA]	N33° 56' 51.34", W083° 19' 29.13"	0.0 E	40	792.7	109.6	UDT ESV AHN	
ESV:		Bearing [True]: 215.0° to 290.0° Bearing [Mag]: 215.0° to 290.0°				Arc Distance: Out to 70.0 NM Altitude: 4000.0 to 14000.0 ft		
5	VNA VNA [IFPA]	N32° 12' 48.39", W083° 29' 50.12"	1.0 E	40	300	116.5	VNA	
ESV:		Bearing [True]: 291.0° to 331.0° Bearing [Mag]: 290.0° to 330.0°				Arc Distance: Out to 68.0 NM Altitude: 2500.0 to 18000.0 ft		
6	UDT ESV LGC LGC [IFPA]	N33° 02' 56.83", W085° 12' 22.40"	1.0 E	130	798.4	115.6	UDT ESV LGC	
ESV:		Bearing [True]: 15.0° to 96.0° Bearing [Mag]: 14.0° to 95.0°				Arc Distance: Out to 70.0 NM Altitude: 4000.0 to 14000.0 ft		
7	ESV IRQ [IFPA] IRQ [IFPA]	N33° 42' 26.47", W082° 09' 43.43"	4.0 W	130	420	113.9	ESV IRQ [IFPA]	
ESV:		Bearing [True]: 221.0° to 261.0° Bearing [Mag]: 225.0° to 265.0°				Arc Distance: Out to 130.0 NM Altitude: 8500.0 to 20000.0 ft		



DME DME Assessment Results for SMLTZ3 path KATL:RW08L:DER_SMLTZ

Graphic Depiction 1



DME DME Assessment Results for SMLTZ3 path KATL:RW08R:DER_SKNNR_

Results Summary

Flyability:	Completed
DME/DME:	Completed - No Critical DMEs
Name:	David C-CTR Cook
Project File:	C:\Users\David C-CTR Cook\Documents\TARGETS STUFF\PROJECTS\ATL SIDs for 20220324\DME-DME\ATL SIDS\SMLTZ3\KATL SMLTZ3 (RNAV) SID_DME_210701.tgs
Output File:	C:\Users\David C-CTR Cook\Documents\TARGETS STUFF\PROJECTS\ATL SIDs for 20220324\DME-DME\ATL SIDS\SMLTZ3\KATL [IFPA] SMLTZ3 20210714_1741 EDT\KATL-RW08R-DER_SKNNR_KATL SMLTZ3 SID KATL RW08R SKNNR 20210714_1741 EDT.pdf
Procedure Name:	SMLTZ3
Software: DmeDmePlugin:	6.3.0
Date/Time:	07/14/2021 17:41 EDT
Databases:	DTED Level 0 MAX

Failures

No Failures

Warnings

No Warnings

Notes For Flight Check

None

Flight Plan

Name	Type	Lat/Lon	Altitude (ft)	VNAV Mode	Ground Speed (kts)	Turn Type	Leg Type
KATL:RW08R:DER	WP	N33° 38' 48.46", W084° 24' 19.83"	995.4	VNAV	130	FLY_OVER	TF
SKNNR_	WP	N33° 38' 04.43", W084° 20' 33.19"	1970	VNAV	200	FLY_BY	TF
Climb Gradient: 500.0 ft/NM up to 1527.0 ft MSL 200.0 ft/NM							

Flyability

Flight Type:	SID
Selected Airport:	KATL [IFPA]
Climb Gradient:	500.0 ft/NM up to 1527.0 ft MSL 200.0 ft/NM
Speeds:	130 at the Runway DER
	145 at the end of the VA or VI leg
	200 Ground Speed to 11000 FT
	240 Ground Speed to 18000 FT
	260 Ground Speed to 24000 FT
	340 Ground Speed above 24000 FT
Descent During a Turn:	Allowed
VNAV Mode:	Flight Plan

DME DME Assessment Results for SMLTZ3 path KATL:RW08R:DER_SKNNR_

DME/DME	
RNP:	RNP 2
Flight Mode:	Manual
Line of Sight (DTED Level 0 Max):	Evaluated
Inertial Drift:	Enabled
Initial Drift:	0.558 NM
INS Drift Rate:	8.0 NM/Hour
Range Mode:	OSV
RNP Edges:	Evaluated
Min DME Range:	3.0 NM
DME Types:	DME, VOR-DME, VORTAC
DME Include Angles:	30 to 150
Critical DMEs:	Allowed
DoD Facilities:	Not included
Foreign Facilities:	Not included
High DMEs:	Included
Low DMEs:	Included
Terminal DMEs:	Included
Flight Check DMEs:	Not selected
Higher Altitudes:	Not Evaluated
Near Maximum Altitude:	Not Evaluated
Automatic ESVs:	Enabled
Disabled DMEs:	None

DME/DME (Continued)										
DMEs Used										
#	Name	Lat/Lon	MAGVAR	Range	Type	Source	Critical	Status	Time	Distance
1	ATL	N33° 37' 44.68", W084° 26' 06.23"	5.0 W	130	H	IFPA	NO	Enabled	43.2 %	49.1 %
2	PDK	N33° 52' 32.27", W084° 17' 55.73"	5.0 W	40	L	IFPA	NO	Enabled	43.2 %	49.1 %

Flight Check DME Selection						
Distance [NM]	Selected DMEs					Alternate
0.0						
1.7	ATL	PDK				

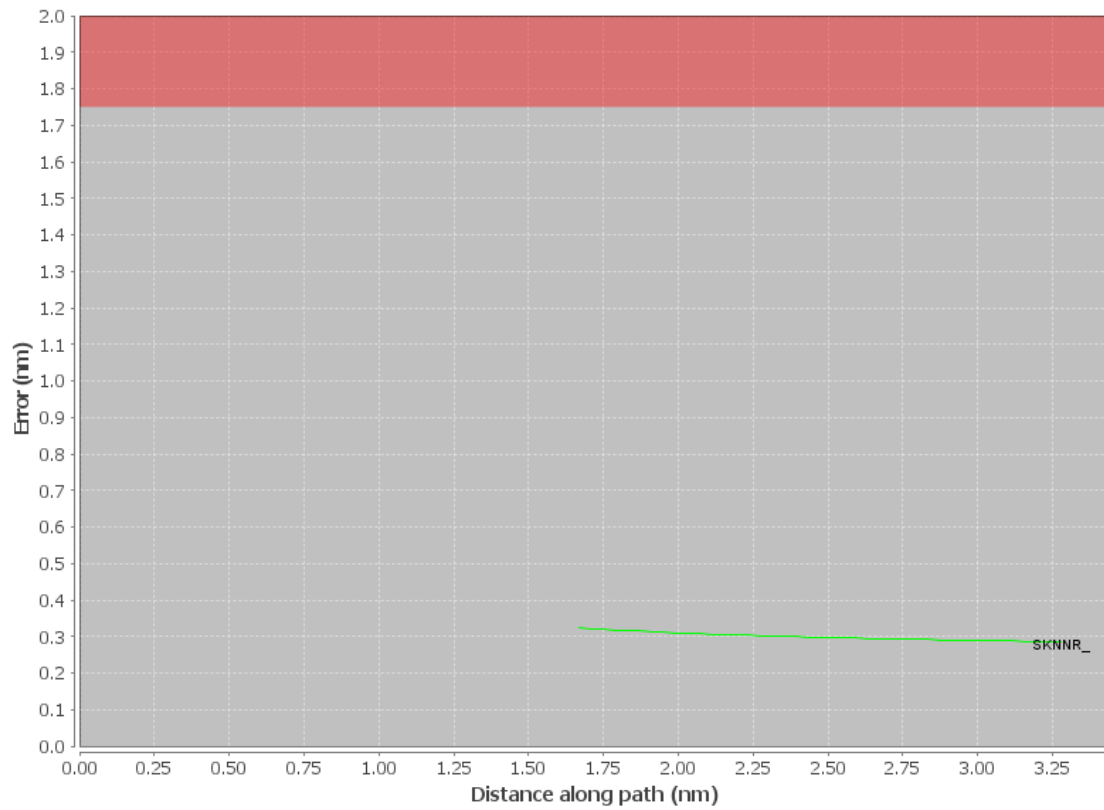
Inertial Drift Segments			
#	Start Location	End Location	Length [NM]
1	N33° 38' 48.46", W084° 24' 17.28"	N33° 38' 36.46", W084° 22' 22.45"	1.629

Available DMEs by Waypoints		
Waypoint Before	Waypoint After	DME List
KATL:RW08R:DER	SKNNR_	PDK, ATL

DME DME Assessment Results for SMLTZ3 path KATL:RW08R:DER_SKNNR_

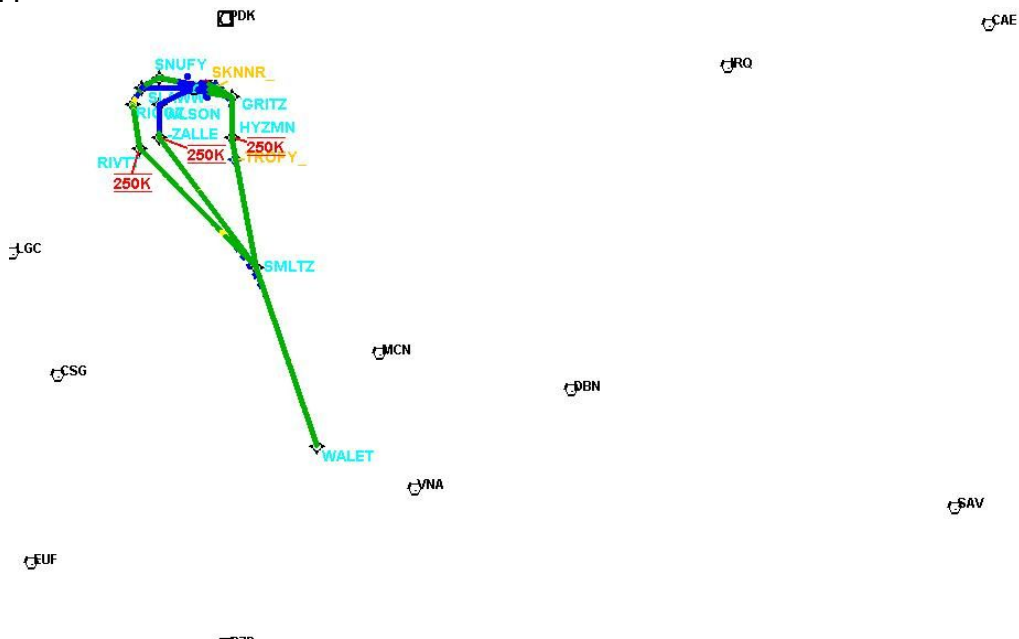
User Data Files								
#	File Name							
1	KATL SMLTZ SID.udt							
2	New Analysis.udt							
User DMEs								
#	Name	Lat/Lon	MAGVAR	Range	Elevation [ft]	Frequency	Replaces	Status
1	UDT ESV RMG RMG [IFPA]	N34° 09' 45.23", W085° 07' 09.87"	1.0 E	130	1147.8	115.4	UDT ESV RMG	
ESV:		Bearing [True]: 120.0° to 160.0° Bearing [Mag]: 119.0° to 159.0°				Arc Distance: Out to 65.0 NM Altitude: 4000.0 to 14000.0 ft		
2	UDT ESV PZD PZD [IFPA]	N31° 39' 18.74", W084° 17' 35.16"	2.0 W	40	292	116.1	UDT ESV PZD	
ESV:		Bearing [True]: 358.0° to 28.0° Bearing [Mag]: 360.0° to 30.0°				Arc Distance: Out to 95.0 NM Altitude: 6000.0 to 15500.0 ft		
3	UDT ESV DBN DBN [IFPA]	N32° 33' 48.46", W082° 49' 48.16"	5.0 W	40	305.7	113.1	UDT ESV DBN	
ESV:		Bearing [True]: 255.0° to 305.0° Bearing [Mag]: 260.0° to 310.0°				Arc Distance: Out to 80.0 NM Altitude: 8500.0 to 16000.0 ft		
4	UDT ESV AHN AHN [IFPA]	N33° 56' 51.34", W083° 19' 29.13"	0.0 E	40	792.7	109.6	UDT ESV AHN	
ESV:		Bearing [True]: 215.0° to 290.0° Bearing [Mag]: 215.0° to 290.0°				Arc Distance: Out to 70.0 NM Altitude: 4000.0 to 14000.0 ft		
5	VNA VNA [IFPA]	N32° 12' 48.39", W083° 29' 50.12"	1.0 E	40	300	116.5	VNA	
ESV:		Bearing [True]: 291.0° to 331.0° Bearing [Mag]: 290.0° to 330.0°				Arc Distance: Out to 68.0 NM Altitude: 2500.0 to 18000.0 ft		
6	UDT ESV LGC LGC [IFPA]	N33° 02' 56.83", W085° 12' 22.40"	1.0 E	130	798.4	115.6	UDT ESV LGC	
ESV:		Bearing [True]: 15.0° to 96.0° Bearing [Mag]: 14.0° to 95.0°				Arc Distance: Out to 70.0 NM Altitude: 4000.0 to 14000.0 ft		
7	ESV IRQ [IFPA] IRQ [IFPA]	N33° 42' 26.47", W082° 09' 43.43"	4.0 W	130	420	113.9	ESV IRQ [IFPA]	
ESV:		Bearing [True]: 221.0° to 261.0° Bearing [Mag]: 225.0° to 265.0°				Arc Distance: Out to 130.0 NM Altitude: 8500.0 to 20000.0 ft		

DME Error



DME DME Assessment Results for SMLTZ3 path KATL:RW08R:DER_SKNNR_

Graphic Depiction 1



DME DME Assessment Results for SMLTZ3 path KATL:RW09L:DER_GRITZ

Results Summary

Flyability:	Completed
DME/DME:	Completed - No Critical DMEs
Name:	David C-CTR Cook
Project File:	C:\Users\David C-CTR Cook\Documents\TARGETS STUFF\PROJECTS\ATL SIDs for 20220324\DME-DME\ATL SIDS\SMLTZ3\KATL SMLTZ3 (RNAV) SID_DME_210701.tgs
Output File:	C:\Users\David C-CTR Cook\Documents\TARGETS STUFF\PROJECTS\ATL SIDs for 20220324\DME-DME\ATL SIDS\SMLTZ3\KATL [IFPA] SMLTZ3 20210714_1741 EDT\KATL-RW09L-DER_GRITZ\KATL SMLTZ3 SID KATL RW09L GRITZ 20210714_1741 EDT.pdf
Procedure Name:	SMLTZ3
Software: DmeDmePlugin:	6.3.0
Date/Time:	07/14/2021 17:41 EDT
Databases:	DTED Level 0 MAX

Failures

No Failures

Warnings

No Warnings

Notes For Flight Check

None

Flight Plan

Name	Type	Lat/Lon	Altitude (ft)	VNAV Mode	Ground Speed (kts)	Turn Type	Leg Type
KATL:RW09L:DER	WP	N33° 38' 04.93", W084° 24' 26.16"	977.2	VNAV	130	FLY_BY	TF
GRITZ	WP	N33° 36' 07.72", W084° 16' 34.81"	2686.6	VNAV	200	FLY_BY	TF
Climb Gradient: 500.0 ft/NM up to 1527.0 ft MSL 200.0 ft/NM							

Flyability

Flight Type:	SID
Selected Airport:	KATL [IFPA]
Climb Gradient:	500.0 ft/NM up to 1527.0 ft MSL 200.0 ft/NM
Speeds:	130 at the Runway DER
	145 at the end of the VA or VI leg
	200 Ground Speed to 11000 FT
	240 Ground Speed to 18000 FT
	260 Ground Speed to 24000 FT
	340 Ground Speed above 24000 FT
Descent During a Turn:	Allowed
VNAV Mode:	Flight Plan

DME DME Assessment Results for SMLTZ3 path KATL:RW09L:DER_GRITZ

DME/DME	
RNP:	RNP 2
Flight Mode:	Manual
Line of Sight (DTED Level 0 Max):	Evaluated
Inertial Drift:	Enabled
Initial Drift:	0.558 NM
INS Drift Rate:	8.0 NM/Hour
Range Mode:	OSV
RNP Edges:	Evaluated
Min DME Range:	3.0 NM
DME Types:	DME, VOR-DME, VORTAC
DME Include Angles:	30 to 150
Critical DMEs:	Allowed
DoD Facilities:	Not included
Foreign Facilities:	Not included
High DMEs:	Included
Low DMEs:	Included
Terminal DMEs:	Included
Flight Check DMEs:	Not selected
Higher Altitudes:	Not Evaluated
Near Maximum Altitude:	Not Evaluated
Automatic ESVs:	Enabled
Disabled DMEs:	None

DME/DME (Continued)										
DMEs Used										
#	Name	Lat/Lon	MAGVAR	Range	Type	Source	Critical	Status	Time	Distance
1	ATL	N33° 37' 44.68", W084° 26' 06.23"	5.0 W	130	H	IFPA	NO	Enabled	70.6 %	76.1 %
2	PDK	N33° 52' 32.27", W084° 17' 55.73"	5.0 W	40	L	IFPA	NO	Enabled	70.6 %	76.1 %

Flight Check DME Selection						
Distance [NM]	Selected DMEs					Alternate
0.0						
1.7	ATL	PDK				

Inertial Drift Segments			
#	Start Location	End Location	Length [NM]
1	N33° 38' 04.93", W084° 24' 23.61"	N33° 37' 53.76", W084° 22' 29.76"	1.6135

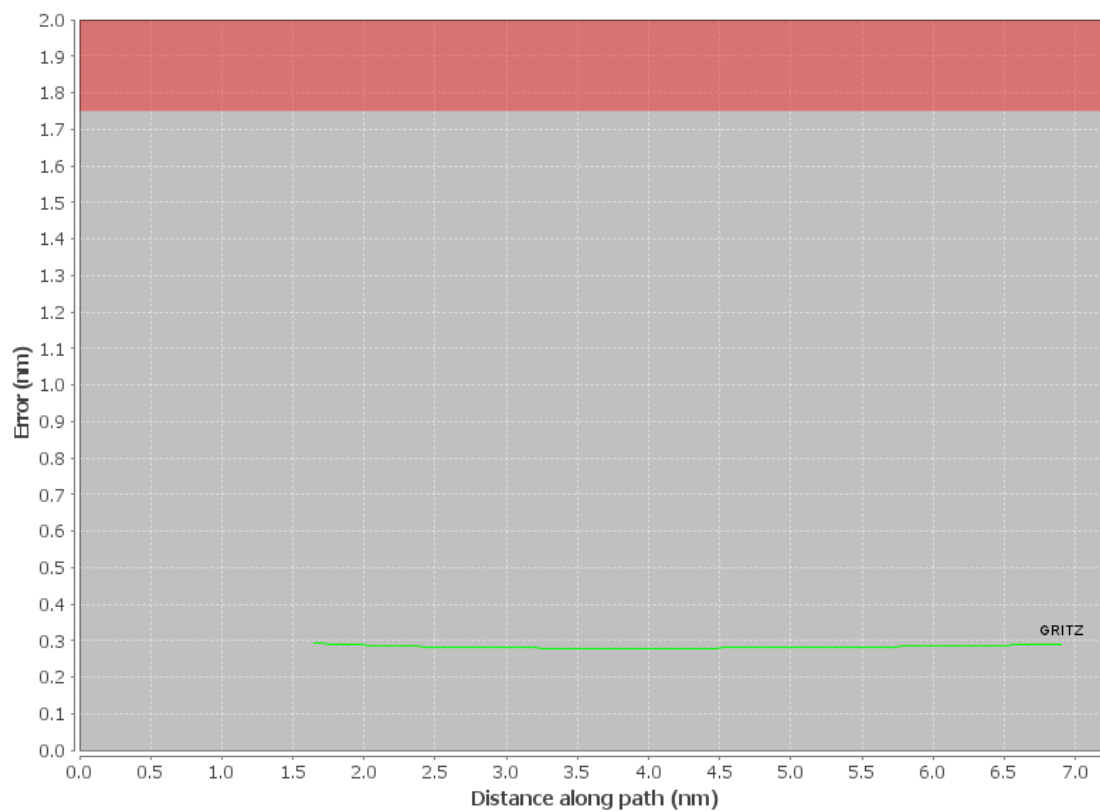
Available DMEs by Waypoints		
Waypoint Before	Waypoint After	DME List
KATL:RW09L:DER	GRITZ	PDK, ATL

DME DME Assessment Results for SMLTZ3 path KATL:RW09L:DER_GRITZ

User Data Files								
#	File Name							
1	KATL SMLTZ SID.udt							
2	New Analysis.udt							
User DMEs								
#	Name	Lat/Lon	MAGVAR	Range	Elevation [ft]	Frequency	Replaces	Status
1	UDT ESV RMG RMG [IFPA]	N34° 09' 45.23", W085° 07' 09.87"	1.0 E	130	1147.8	115.4	UDT ESV RMG	
ESV:		Bearing [True]: 120.0° to 160.0° Bearing [Mag]: 119.0° to 159.0°				Arc Distance: Out to 65.0 NM Altitude: 4000.0 to 14000.0 ft		
2	UDT ESV PZD PZD [IFPA]	N31° 39' 18.74", W084° 17' 35.16"	2.0 W	40	292	116.1	UDT ESV PZD	
ESV:		Bearing [True]: 358.0° to 28.0° Bearing [Mag]: 360.0° to 30.0°				Arc Distance: Out to 95.0 NM Altitude: 6000.0 to 15500.0 ft		
3	UDT ESV DBN DBN [IFPA]	N32° 33' 48.46", W082° 49' 48.16"	5.0 W	40	305.7	113.1	UDT ESV DBN	
ESV:		Bearing [True]: 255.0° to 305.0° Bearing [Mag]: 260.0° to 310.0°				Arc Distance: Out to 80.0 NM Altitude: 8500.0 to 16000.0 ft		
4	UDT ESV AHN AHN [IFPA]	N33° 56' 51.34", W083° 19' 29.13"	0.0 E	40	792.7	109.6	UDT ESV AHN	
ESV:		Bearing [True]: 215.0° to 290.0° Bearing [Mag]: 215.0° to 290.0°				Arc Distance: Out to 70.0 NM Altitude: 4000.0 to 14000.0 ft		
5	VNA VNA [IFPA]	N32° 12' 48.39", W083° 29' 50.12"	1.0 E	40	300	116.5	VNA	
ESV:		Bearing [True]: 291.0° to 331.0° Bearing [Mag]: 290.0° to 330.0°				Arc Distance: Out to 68.0 NM Altitude: 2500.0 to 18000.0 ft		
6	UDT ESV LGC LGC [IFPA]	N33° 02' 56.83", W085° 12' 22.40"	1.0 E	130	798.4	115.6	UDT ESV LGC	
ESV:		Bearing [True]: 15.0° to 96.0° Bearing [Mag]: 14.0° to 95.0°				Arc Distance: Out to 70.0 NM Altitude: 4000.0 to 14000.0 ft		
7	ESV IRQ [IFPA] IRQ [IFPA]	N33° 42' 26.47", W082° 09' 43.43"	4.0 W	130	420	113.9	ESV IRQ [IFPA]	
ESV:		Bearing [True]: 221.0° to 261.0° Bearing [Mag]: 225.0° to 265.0°				Arc Distance: Out to 130.0 NM Altitude: 8500.0 to 20000.0 ft		

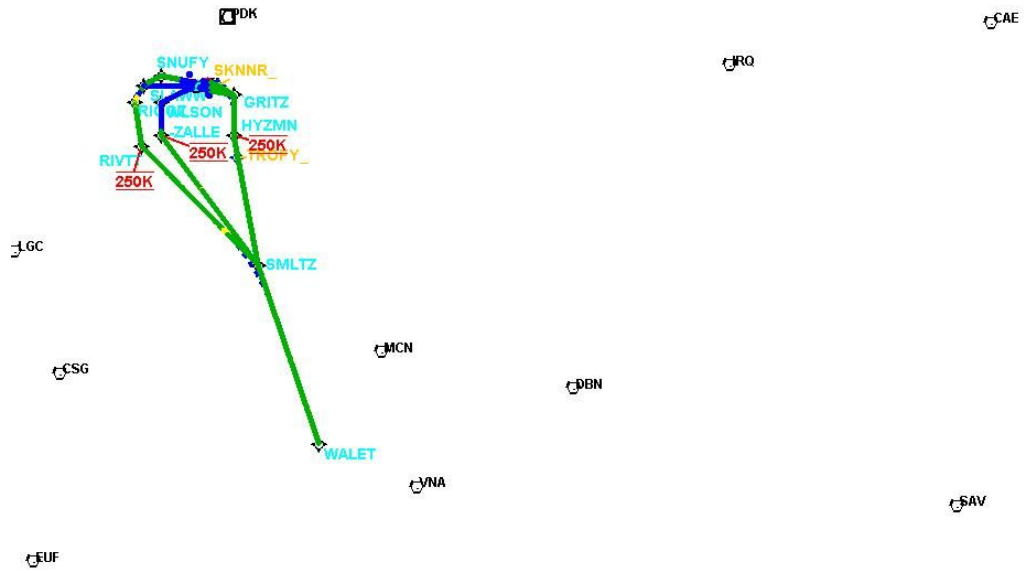
DME DME Assessment Results for SMLTZ3 path KATL:RW09L:DER_GRITZ

DME Error



DME DME Assessment Results for SMLTZ3 path KATL:RW09L:DER_GRITZ

Graphic Depiction 1



DME DME Assessment Results for SMLTZ3 path KATL:RW09R:DER_GRITZ

Results Summary

Flyability:	Completed
DME/DME:	Completed - No Critical DMEs
Name:	David C-CTR Cook
Project File:	C:\Users\David C-CTR Cook\Documents\TARGETS STUFF\PROJECTS\ATL SIDs for 20220324\DME-DME\ATL SIDS\SMLTZ3\KATL SMLTZ3 (RNAV) SID_DME_210701.tgs
Output File:	C:\Users\David C-CTR Cook\Documents\TARGETS STUFF\PROJECTS\ATL SIDs for 20220324\DME-DME\ATL SIDS\SMLTZ3\KATL [IFPA] SMLTZ3 20210714_1741 EDT\KATL-RW09R-DER_GRITZ\KATL SMLTZ3 SID KATL RW09R GRITZ 20210714_1741 EDT.pdf
Procedure Name:	SMLTZ3
Software: DmeDmePlugin:	6.3.0
Date/Time:	07/14/2021 17:41 EDT
Databases:	DTED Level 0 MAX

Failures

No Failures

Warnings

No Warnings

Notes For Flight Check

None

Flight Plan

Name	Type	Lat/Lon	Altitude (ft)	VNAV Mode	Ground Speed (kts)	Turn Type	Leg Type
KATL:RW09R:DER	WP	N33° 37' 54.56", W084° 25' 06.24"	984.7	VNAV	130	FLY_BY	TF
GRITZ	WP	N33° 36' 07.72", W084° 16' 34.81"	2686.6	VNAV	200	FLY_BY	TF
Climb Gradient: 500.0 ft/NM up to 1527.0 ft MSL 200.0 ft/NM							

Flyability

Flight Type:	SID
Selected Airport:	KATL [IFPA]
Climb Gradient:	500.0 ft/NM up to 1527.0 ft MSL 200.0 ft/NM
Speeds:	130 at the Runway DER
	145 at the end of the VA or VI leg
	200 Ground Speed to 11000 FT
	240 Ground Speed to 18000 FT
	260 Ground Speed to 24000 FT
	340 Ground Speed above 24000 FT
Descent During a Turn:	Allowed
VNAV Mode:	Flight Plan

DME DME Assessment Results for SMLTZ3 path KATL:RW09R:DER_GRITZ

DME/DME	
RNP:	RNP 2
Flight Mode:	Manual
Line of Sight (DTED Level 0 Max):	Evaluated
Inertial Drift:	Enabled
Initial Drift:	0.558 NM
INS Drift Rate:	8.0 NM/Hour
Range Mode:	OSV
RNP Edges:	Evaluated
Min DME Range:	3.0 NM
DME Types:	DME, VOR-DME, VORTAC
DME Include Angles:	30 to 150
Critical DMEs:	Allowed
DoD Facilities:	Not included
Foreign Facilities:	Not included
High DMEs:	Included
Low DMEs:	Included
Terminal DMEs:	Included
Flight Check DMEs:	Not selected
Higher Altitudes:	Not Evaluated
Near Maximum Altitude:	Not Evaluated
Automatic ESVs:	Enabled
Disabled DMEs:	None

DME/DME (Continued)										
DMEs Used										
#	Name	Lat/Lon	MAGVAR	Range	Type	Source	Critical	Status	Time	Distance
1	ATL	N33° 37' 44.68", W084° 26' 06.23"	5.0 W	130	H	IFPA	NO	Enabled	65 %	69.6 %
2	PDK	N33° 52' 32.27", W084° 17' 55.73"	5.0 W	40	L	IFPA	NO	Enabled	65 %	69.6 %

Flight Check DME Selection						
Distance [NM]	Selected DMEs					Alternate
0.0						
2.2	ATL	PDK				

Inertial Drift Segments			
#	Start Location	End Location	Length [NM]
1	N33° 37' 54.57", W084° 25' 03.73"	N33° 37' 34.92", W084° 22' 28.43"	2.2055

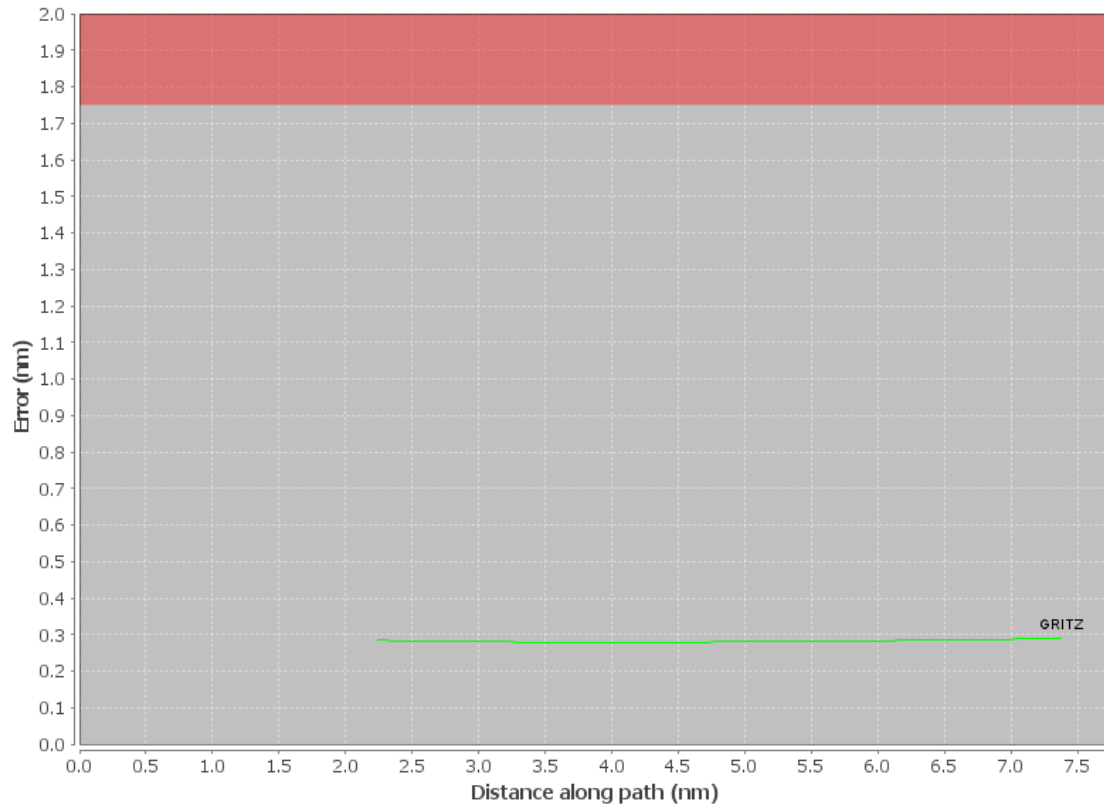
Available DMEs by Waypoints		
Waypoint Before	Waypoint After	DME List
KATL:RW09R:DER	GRITZ	PDK, ATL

DME DME Assessment Results for SMLTZ3 path KATL:RW09R:DER_GRITZ

User Data Files								
#	File Name							
1	KATL SMLTZ SID.udt							
2	New Analysis.udt							
User DMEs								
#	Name	Lat/Lon	MAGVAR	Range	Elevation [ft]	Frequency	Replaces	Status
1	UDT ESV RMG RMG [IFPA]	N34° 09' 45.23", W085° 07' 09.87"	1.0 E	130	1147.8	115.4	UDT ESV RMG	
ESV:		Bearing [True]: 120.0° to 160.0° Bearing [Mag]: 119.0° to 159.0°				Arc Distance: Out to 65.0 NM Altitude: 4000.0 to 14000.0 ft		
2	UDT ESV PZD PZD [IFPA]	N31° 39' 18.74", W084° 17' 35.16"	2.0 W	40	292	116.1	UDT ESV PZD	
ESV:		Bearing [True]: 358.0° to 28.0° Bearing [Mag]: 360.0° to 30.0°				Arc Distance: Out to 95.0 NM Altitude: 6000.0 to 15500.0 ft		
3	UDT ESV DBN DBN [IFPA]	N32° 33' 48.46", W082° 49' 48.16"	5.0 W	40	305.7	113.1	UDT ESV DBN	
ESV:		Bearing [True]: 255.0° to 305.0° Bearing [Mag]: 260.0° to 310.0°				Arc Distance: Out to 80.0 NM Altitude: 8500.0 to 16000.0 ft		
4	UDT ESV AHN AHN [IFPA]	N33° 56' 51.34", W083° 19' 29.13"	0.0 E	40	792.7	109.6	UDT ESV AHN	
ESV:		Bearing [True]: 215.0° to 290.0° Bearing [Mag]: 215.0° to 290.0°				Arc Distance: Out to 70.0 NM Altitude: 4000.0 to 14000.0 ft		
5	VNA VNA [IFPA]	N32° 12' 48.39", W083° 29' 50.12"	1.0 E	40	300	116.5	VNA	
ESV:		Bearing [True]: 291.0° to 331.0° Bearing [Mag]: 290.0° to 330.0°				Arc Distance: Out to 68.0 NM Altitude: 2500.0 to 18000.0 ft		
6	UDT ESV LGC LGC [IFPA]	N33° 02' 56.83", W085° 12' 22.40"	1.0 E	130	798.4	115.6	UDT ESV LGC	
ESV:		Bearing [True]: 15.0° to 96.0° Bearing [Mag]: 14.0° to 95.0°				Arc Distance: Out to 70.0 NM Altitude: 4000.0 to 14000.0 ft		
7	ESV IRQ [IFPA] IRQ [IFPA]	N33° 42' 26.47", W082° 09' 43.43"	4.0 W	130	420	113.9	ESV IRQ [IFPA]	
ESV:		Bearing [True]: 221.0° to 261.0° Bearing [Mag]: 225.0° to 265.0°				Arc Distance: Out to 130.0 NM Altitude: 8500.0 to 20000.0 ft		

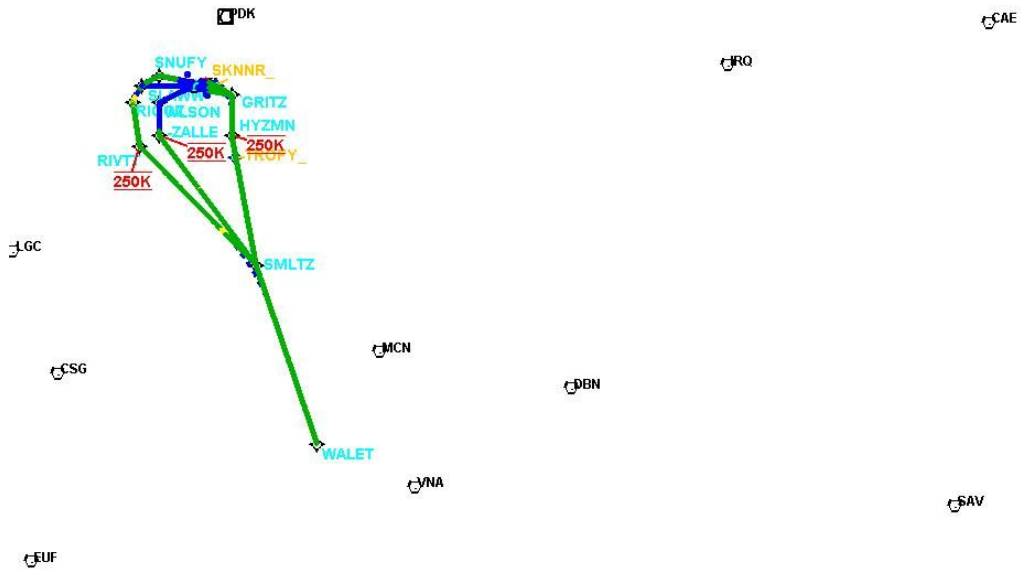
DME DME Assessment Results for SMLTZ3 path KATL:RW09R:DER_GRITZ

DME Error



DME DME Assessment Results for SMLTZ3 path KATL:RW09R:DER_GRITZ

Graphic Depiction 1



DME DME Assessment Results for SMLTZ3 path KATL:RW10:DER_GRITZ

Results Summary

Flyability:	Completed
DME/DME:	Completed - No Critical DMEs
Name:	David C-CTR Cook
Project File:	C:\Users\David C-CTR Cook\Documents\TARGETS STUFF\PROJECTS\ATL SIDs for 20220324\DME-DME\ATL SIDS\SMLTZ3\KATL SMLTZ3 (RNAV) SID_DME_210701.tgs
Output File:	C:\Users\David C-CTR Cook\Documents\TARGETS STUFF\PROJECTS\ATL SIDs for 20220324\DME-DME\ATL SIDS\SMLTZ3\KATL [IFPA] SMLTZ3 20210714_1741 EDT\KATL-RW10-DER_GRITZ\KATL SMLTZ3 SID KATL RW10 GRITZ 20210714_1741 EDT.pdf
Procedure Name:	SMLTZ3
Software: DmeDmePlugin:	6.3.0
Date/Time:	07/14/2021 17:41 EDT
Databases:	DTED Level 0 MAX

Failures

No Failures

Warnings

No Warnings

Notes For Flight Check

None

Flight Plan

Name	Type	Lat/Lon	Altitude (ft)	VNAV Mode	Ground Speed (kts)	Turn Type	Leg Type
KATL:RW10:DER	WP	N33° 37' 13.03", W084° 25' 05.94"	997.5	VNAV	130	FLY_BY	TF
GRITZ	WP	N33° 36' 07.72", W084° 16' 34.81"	2686.6	VNAV	200	FLY_BY	TF
Climb Gradient: 500.0 ft/NM up to 1527.0 ft MSL 200.0 ft/NM							

Flyability

Flight Type:	SID
Selected Airport:	KATL [IFPA]
Climb Gradient:	500.0 ft/NM up to 1527.0 ft MSL 200.0 ft/NM
Speeds:	130 at the Runway DER
	145 at the end of the VA or VI leg
	200 Ground Speed to 11000 FT
	240 Ground Speed to 18000 FT
	260 Ground Speed to 24000 FT
	340 Ground Speed above 24000 FT
Descent During a Turn:	Allowed
VNAV Mode:	Flight Plan

DME DME Assessment Results for SMLTZ3 path KATL:RW10:DER_GRITZ

DME/DME	
RNP:	RNP 2
Flight Mode:	Manual
Line of Sight (DTED Level 0 Max):	Evaluated
Inertial Drift:	Enabled
Initial Drift:	0.558 NM
INS Drift Rate:	8.0 NM/Hour
Range Mode:	OSV
RNP Edges:	Evaluated
Min DME Range:	3.0 NM
DME Types:	DME, VOR-DME, VORTAC
DME Include Angles:	30 to 150
Critical DMEs:	Allowed
DoD Facilities:	Not included
Foreign Facilities:	Not included
High DMEs:	Included
Low DMEs:	Included
Terminal DMEs:	Included
Flight Check DMEs:	Not selected
Higher Altitudes:	Not Evaluated
Near Maximum Altitude:	Not Evaluated
Automatic ESVs:	Enabled
Disabled DMEs:	None

DME/DME (Continued)										
DMEs Used										
#	Name	Lat/Lon	MAGVAR	Range	Type	Source	Critical	Status	Time	Distance
1	ATL	N33° 37' 44.68", W084° 26' 06.23"	5.0 W	130	H	IFPA	NO	Enabled	66 %	70.7 %
2	PDK	N33° 52' 32.27", W084° 17' 55.73"	5.0 W	40	L	IFPA	NO	Enabled	66 %	70.7 %

Flight Check DME Selection						
Distance [NM]	Selected DMEs					Alternate
0.0						
2.1	ATL	PDK				

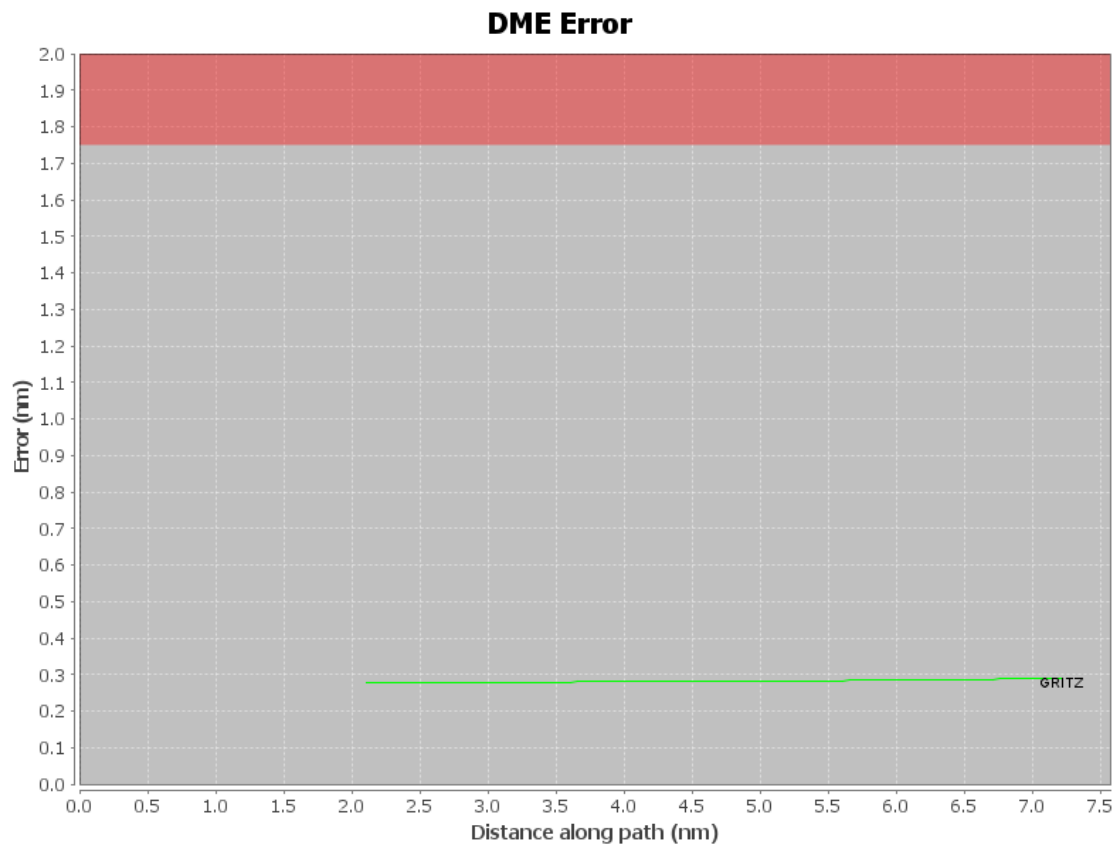
Inertial Drift Segments			
#	Start Location	End Location	Length [NM]
1	N33° 37' 13.03", W084° 25' 03.40"	N33° 37' 01.89", W084° 22' 35.37"	2.074

Available DMEs by Waypoints		
Waypoint Before	Waypoint After	DME List
KATL:RW10:DER	GRITZ	PDK, ATL

DME DME Assessment Results for SMLTZ3 path KATL:RW10:DER_GRITZ

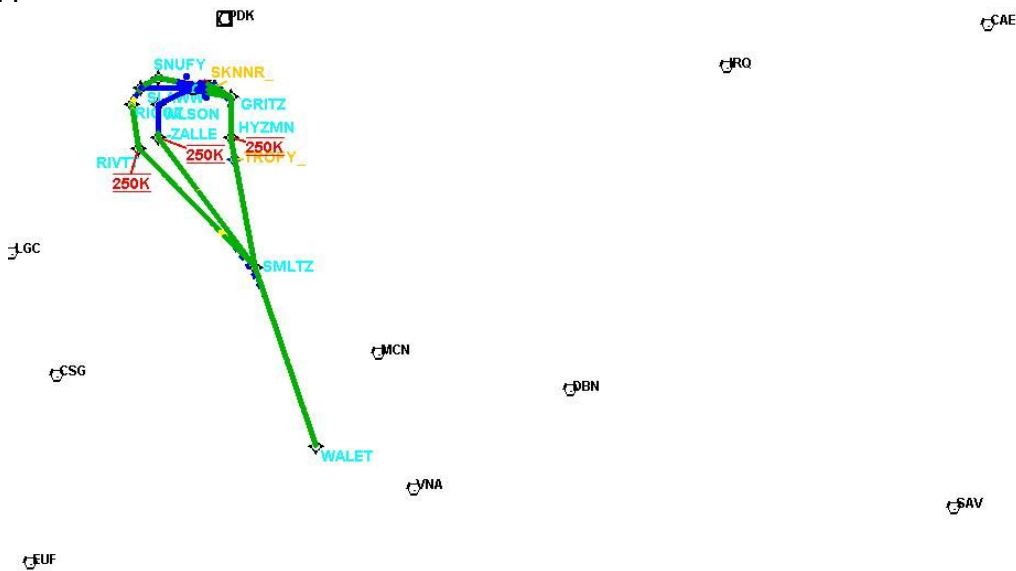
User Data Files								
#	File Name							
1	KATL SMLTZ SID.udt							
2	New Analysis.udt							
User DMEs								
#	Name	Lat/Lon	MAGVAR	Range	Elevation [ft]	Frequency	Replaces	Status
1	UDT ESV RMG RMG [IFPA]	N34° 09' 45.23", W085° 07' 09.87"	1.0 E	130	1147.8	115.4	UDT ESV RMG	
ESV:		Bearing [True]: 120.0° to 160.0° Bearing [Mag]: 119.0° to 159.0°				Arc Distance: Out to 65.0 NM Altitude: 4000.0 to 14000.0 ft		
2	UDT ESV PZD PZD [IFPA]	N31° 39' 18.74", W084° 17' 35.16"	2.0 W	40	292	116.1	UDT ESV PZD	
ESV:		Bearing [True]: 358.0° to 28.0° Bearing [Mag]: 360.0° to 30.0°				Arc Distance: Out to 95.0 NM Altitude: 6000.0 to 15500.0 ft		
3	UDT ESV DBN DBN [IFPA]	N32° 33' 48.46", W082° 49' 48.16"	5.0 W	40	305.7	113.1	UDT ESV DBN	
ESV:		Bearing [True]: 255.0° to 305.0° Bearing [Mag]: 260.0° to 310.0°				Arc Distance: Out to 80.0 NM Altitude: 8500.0 to 16000.0 ft		
4	UDT ESV AHN AHN [IFPA]	N33° 56' 51.34", W083° 19' 29.13"	0.0 E	40	792.7	109.6	UDT ESV AHN	
ESV:		Bearing [True]: 215.0° to 290.0° Bearing [Mag]: 215.0° to 290.0°				Arc Distance: Out to 70.0 NM Altitude: 4000.0 to 14000.0 ft		
5	VNA VNA [IFPA]	N32° 12' 48.39", W083° 29' 50.12"	1.0 E	40	300	116.5	VNA	
ESV:		Bearing [True]: 291.0° to 331.0° Bearing [Mag]: 290.0° to 330.0°				Arc Distance: Out to 68.0 NM Altitude: 2500.0 to 18000.0 ft		
6	UDT ESV LGC LGC [IFPA]	N33° 02' 56.83", W085° 12' 22.40"	1.0 E	130	798.4	115.6	UDT ESV LGC	
ESV:		Bearing [True]: 15.0° to 96.0° Bearing [Mag]: 14.0° to 95.0°				Arc Distance: Out to 70.0 NM Altitude: 4000.0 to 14000.0 ft		
7	ESV IRQ [IFPA] IRQ [IFPA]	N33° 42' 26.47", W082° 09' 43.43"	4.0 W	130	420	113.9	ESV IRQ [IFPA]	
ESV:		Bearing [True]: 221.0° to 261.0° Bearing [Mag]: 225.0° to 265.0°				Arc Distance: Out to 130.0 NM Altitude: 8500.0 to 20000.0 ft		

DME DME Assessment Results for SMLTZ3 path KATL:RW10:DER_GRITZ



DME DME Assessment Results for SMLTZ3 path KATL:RW10:DER_GRITZ

Graphic Depiction 1



DME DME Assessment Results for SMLTZ3 path KATL:RW26L:DER_WALET

Results Summary

Flyability:	Completed
DME/DME:	Completed - No Critical DMEs
Name:	David C-CTR Cook
Project File:	C:\Users\David C-CTR Cook\Documents\TARGETS STUFF\PROJECTS\ATL SIDs for 20220324\DME-DME\ATL SIDS\SMLTZ3\KATL SMLTZ3 (RNAV) SID_DME_210701.tgs
Output File:	C:\Users\David C-CTR Cook\Documents\TARGETS STUFF\PROJECTS\ATL SIDs for 20220324\DME-DME\ATL SIDS\SMLTZ3\KATL [IFPA] SMLTZ3 20210714_1741 EDT\KATL-RW26L-DER_WALET\KATL SMLTZ3 SID KATL RW26L WALET 20210714_1741 EDT.pdf
Procedure Name:	SMLTZ3
Software: DmeDmePlugin:	6.3.0
Date/Time:	07/14/2021 17:41 EDT
Databases:	DTED Level 0 MAX

Failures

No Failures

Warnings

No Warnings

Notes For Flight Check

None

Flight Plan

Name	Type	Lat/Lon	Altitude (ft)	VNAV Mode	Ground Speed (kts)	Turn Type	Leg Type
KATL:RW26L:DER	WP	N33° 38' 48.43", W084° 26' 18.10"	1023.7	VNAV	130	FLY_BY	TF
SNUFY	WP	N33° 40' 12.18", W084° 34' 59.60"	2790.5	VNAV	200	FLY_BY	TF
SLAWW	WP	N33° 38' 04.33", W084° 39' 27.38"	3424.1	VNAV	200	FLY_BY	TF
RIGGZ	WP	N33° 34' 36.32", W084° 41' 50.85"	4223.2	VNAV	200	FLY_BY	TF
RIVTT	WP	N33° 25' 12.27", W084° 40' 04.63"	6123.1	VNAV	250	FLY_BY	TF
SMLTZ	WP	N32° 59' 54.82", W084° 10' 21.22"	10000	VNAV	250	FLY_BY	TF
WALET	WP	N32° 21' 55.83", W083° 54' 47.10"	10000	VNAV	250	FLY_BY	TF
Climb Gradient: 500.0 ft/NM up to 1527.0 ft MSL 200.0 ft/NM							

Flyability

Flight Type:	SID
Selected Airport:	KATL [IFPA]
Climb Gradient:	500.0 ft/NM up to 1527.0 ft MSL 200.0 ft/NM
Speeds:	130 at the Runway DER
	145 at the end of the VA or VI leg
	200 Ground Speed to 11000 FT
	240 Ground Speed to 18000 FT
	260 Ground Speed to 24000 FT
	340 Ground Speed above 24000 FT
Descent During a Turn:	Allowed
VNAV Mode:	Flight Plan

DME DME Assessment Results for SMLTZ3 path KATL:RW26L:DER_WALET

DME/DME	
RNP:	RNP 2
Flight Mode:	Manual
Line of Sight (DTED Level 0 Max):	Evaluated
Inertial Drift:	Enabled
Initial Drift:	0.558 NM
INS Drift Rate:	8.0 NM/Hour
Range Mode:	OSV
RNP Edges:	Evaluated
Min DME Range:	3.0 NM
DME Types:	DME, VOR-DME, VORTAC
DME Include Angles:	30 to 150
Critical DMEs:	Allowed
DoD Facilities:	Not included
Foreign Facilities:	Not included
High DMEs:	Included
Low DMEs:	Included
Terminal DMEs:	Included
Flight Check DMEs:	Not selected
Higher Altitudes:	Not Evaluated
Near Maximum Altitude:	Not Evaluated
Automatic ESVs:	Enabled
Disabled DMEs:	None

DME/DME (Continued)										
DMEs Used										
#	Name	Lat/Lon	MAGVAR	Range	Type	Source	Critical	Status	Time	Distance
1	LGC	N33° 02' 56.83", W085° 12' 22.40"	1.0 E	130	H	IFPA	NO	Enabled	45.4 %	46.1 %
2	ATL	N33° 37' 44.68", W084° 26' 06.23"	5.0 W	130	H	IFPA	NO	Enabled	53.6 %	52.5 %
3	PDK	N33° 52' 32.27", W084° 17' 55.73"	5.0 W	40	L	IFPA	NO	Enabled	32.2 %	29.7 %
4	PZD	N31° 39' 18.74", W084° 17' 35.16"	2.0 W	40	L	IFPA	NO	Enabled	46.4 %	49.5 %
5	VNA	N32° 12' 48.39", W083° 29' 50.12"	1.0 E	40	L	IFPA	NO	Enabled	46.5 %	49.6 %
6	DBN	N32° 33' 48.46", W082° 49' 48.16"	5.0 W	40	L	IFPA	NO	Enabled	43.3 %	46.1 %
7	RMG	N34° 09' 45.23", W085° 07' 09.87"	1.0 E	130	H	IFPA	NO	Enabled	25.6 %	24.9 %
8	MCN	N32° 41' 28.27", W083° 38' 49.86"	1.0 E	130	H	IFPA	NO	Enabled	43.9 %	46.8 %
9	IRQ	N33° 42' 26.47", W082° 09' 43.43"	4.0 W	130	H	IFPA	NO	Enabled	59.9 %	63.9 %

DME DME Assessment Results for SMLTZ3 path KATL:RW26L:DER_WALET

Flight Check DME Selection

Distance [NM]	Selected DMEs					Alternate
0.0						
3.7	ATL	PDK				
11.4						
11.8	ATL	PDK				
13.2						
14.6	RMG	PDK	LGC	ATL		
35.5	RMG	LGC	ATL			
36.4	RMG	LGC	ATL	IRQ		
39.8	LGC	ATL	IRQ			
50.4	LGC	ATL	PZD	IRQ		
50.8	LGC	ATL	PZD	VNA	IRQ	
51.4	LGC	ATL	VNA	IRQ		
51.9	LGC	ATL	PZD	VNA	IRQ	
58.5	PZD	LGC	DBN	VNA	MCN	IRQ
60.1	PZD	DBN	MCN	VNA	IRQ	

Inertial Drift Segments

#	Start Location	End Location	Length [NM]
1	N33° 38' 48.43", W084° 26' 20.69"	N33° 39' 23.12", W084° 30' 36.28"	3.6172
2	N33° 38' 12.53", W084° 39' 10.22"	N33° 38' 04.33", W084° 39' 27.38"	0.2746
3	N33° 36' 46.33", W084° 40' 21.20"	N33° 35' 34.11", W084° 41' 11.02"	1.3873

Available DMEs by Waypoints

Waypoint Before	Waypoint After	DME List
KATL:RW26L:DER	SNUFY	PDK, ATL
SNUFY	SLAWW	PDK, ATL
SLAWW	RIGGZ	PDK, ATL, LGC, RMG
RIGGZ	RIVTT	PDK, ATL, LGC, RMG
RIVTT	SMLTZ	DBN, PDK, VNA, LGC, ATL, IRQ, MCN, PZD, RMG
SMLTZ	WALET	DBN, VNA, MCN, IRQ, LGC, PZD

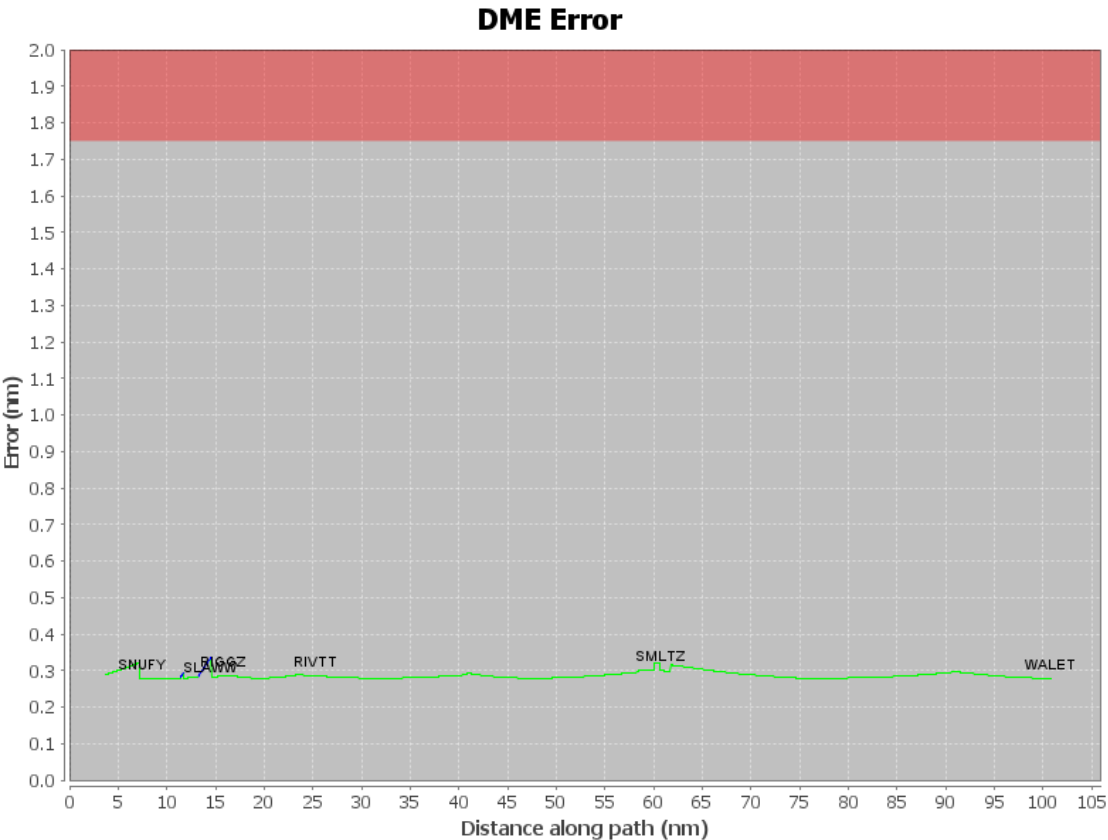
DME DME Assessment Results for SMLTZ3 path KATL:RW26L:DER_WALET

User Data Files

#	File Name
1	KATL SMLTZ SID.udt
2	New Analysis.udt

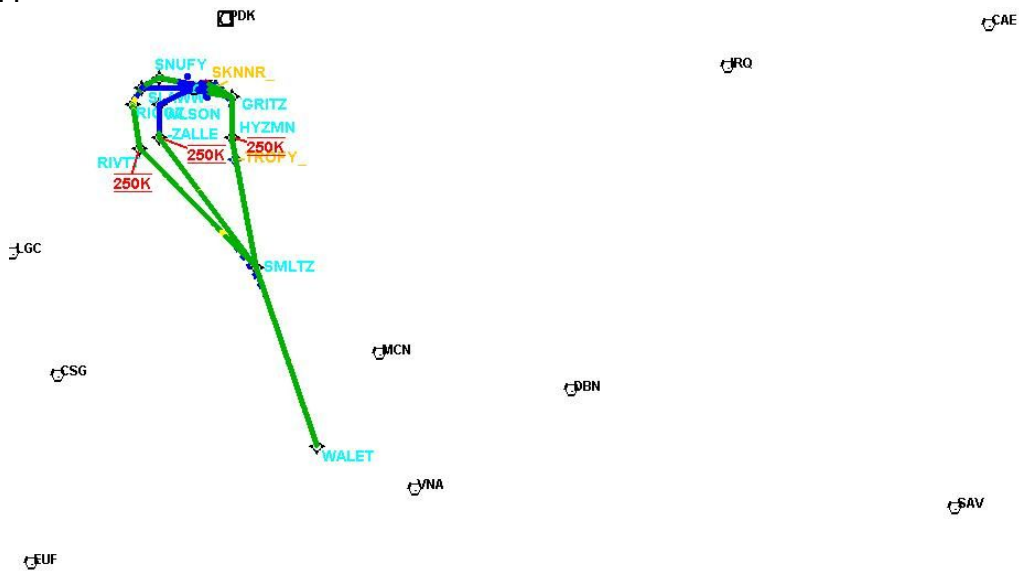
User DMEs

#	Name	Lat/Lon	MAGVAR	Range	Elevation [ft]	Frequency	Replaces	Status
1	UDT ESV RMG RMG [IFPA]	N34° 09' 45.23", W085° 07' 09.87"	1.0 E	130	1147.8	115.4	UDT ESV RMG	
ESV:		Bearing [True]: 120.0° to 160.0° Bearing [Mag]: 119.0° to 159.0°				Arc Distance: Out to 65.0 NM Altitude: 4000.0 to 14000.0 ft		
2	UDT ESV PZD PZD [IFPA]	N31° 39' 18.74", W084° 17' 35.16"	2.0 W	40	292	116.1	UDT ESV PZD	
ESV:		Bearing [True]: 358.0° to 28.0° Bearing [Mag]: 360.0° to 30.0°				Arc Distance: Out to 95.0 NM Altitude: 6000.0 to 15500.0 ft		
3	UDT ESV DBN DBN [IFPA]	N32° 33' 48.46", W082° 49' 48.16"	5.0 W	40	305.7	113.1	UDT ESV DBN	
ESV:		Bearing [True]: 255.0° to 305.0° Bearing [Mag]: 260.0° to 310.0°				Arc Distance: Out to 80.0 NM Altitude: 8500.0 to 16000.0 ft		
4	UDT ESV AHN AHN [IFPA]	N33° 56' 51.34", W083° 19' 29.13"	0.0 E	40	792.7	109.6	UDT ESV AHN	
ESV:		Bearing [True]: 215.0° to 290.0° Bearing [Mag]: 215.0° to 290.0°				Arc Distance: Out to 70.0 NM Altitude: 4000.0 to 14000.0 ft		
5	VNA VNA [IFPA]	N32° 12' 48.39", W083° 29' 50.12"	1.0 E	40	300	116.5	VNA	
ESV:		Bearing [True]: 291.0° to 331.0° Bearing [Mag]: 290.0° to 330.0°				Arc Distance: Out to 68.0 NM Altitude: 2500.0 to 18000.0 ft		
6	UDT ESV LGC LGC [IFPA]	N33° 02' 56.83", W085° 12' 22.40"	1.0 E	130	798.4	115.6	UDT ESV LGC	
ESV:		Bearing [True]: 15.0° to 96.0° Bearing [Mag]: 14.0° to 95.0°				Arc Distance: Out to 70.0 NM Altitude: 4000.0 to 14000.0 ft		
7	ESV IRQ [IFPA] IRQ [IFPA]	N33° 42' 26.47", W082° 09' 43.43"	4.0 W	130	420	113.9	ESV IRQ [IFPA]	
ESV:		Bearing [True]: 221.0° to 261.0° Bearing [Mag]: 225.0° to 265.0°				Arc Distance: Out to 130.0 NM Altitude: 8500.0 to 20000.0 ft		



DME DME Assessment Results for SMLTZ3 path KATL:RW26L:DER_WALET

Graphic Depiction 1



DME DME Assessment Results for SMLTZ3 path KATL:RW26R:DER_SLAWW

Results Summary

Flyability:	Completed
DME/DME:	Completed - No Critical DMEs
Name:	David C-CTR Cook
Project File:	C:\Users\David C-CTR Cook\Documents\TARGETS STUFF\PROJECTS\ATL SIDs for 20220324\DME-DME\ATL SIDS\SMLTZ3\KATL SMLTZ3 (RNAV) SID_DME_210701.tgs
Output File:	C:\Users\David C-CTR Cook\Documents\TARGETS STUFF\PROJECTS\ATL SIDs for 20220324\DME-DME\ATL SIDS\SMLTZ3\KATL [IFPA] SMLTZ3 20210714_1741 EDT\KATL-RW26R-DER_SLAWW\KATL SMLTZ3 SID KATL RW26R SLAWW 20210714_1741 EDT.pdf
Procedure Name:	SMLTZ3
Software: DmeDmePlugin:	6.3.0
Date/Time:	07/14/2021 17:41 EDT
Databases:	DTED Level 0 MAX

Failures

No Failures

Warnings

No Warnings

Notes For Flight Check

None

Flight Plan

Name	Type	Lat/Lon	Altitude (ft)	VNAV Mode	Ground Speed (kts)	Turn Type	Leg Type
KATL:RW26R:DER	WP	N33° 38' 58.32", W084° 26' 20.49"	1014.6	VNAV	130	FLY_BY	TF
SNUFY	WP	N33° 40' 12.18", W084° 34' 59.60"	2790.5	VNAV	200	FLY_BY	TF
SLAWW	WP	N33° 38' 04.33", W084° 39' 27.38"	3424.1	VNAV	200	FLY_BY	TF
Climb Gradient: 500.0 ft/NM up to 1527.0 ft MSL 200.0 ft/NM							

Flyability

Flight Type:	SID
Selected Airport:	KATL [IFPA]
Climb Gradient:	500.0 ft/NM up to 1527.0 ft MSL 200.0 ft/NM
Speeds:	130 at the Runway DER
	145 at the end of the VA or VI leg
	200 Ground Speed to 11000 FT
	240 Ground Speed to 18000 FT
	260 Ground Speed to 24000 FT
	340 Ground Speed above 24000 FT
Descent During a Turn:	Allowed
VNAV Mode:	Flight Plan

DME DME Assessment Results for SMLTZ3 path KATL:RW26R:DER_SLAWW

DME/DME	
RNP:	RNP 2
Flight Mode:	Manual
Line of Sight (DTED Level 0 Max):	Evaluated
Inertial Drift:	Enabled
Initial Drift:	0.558 NM
INS Drift Rate:	8.0 NM/Hour
Range Mode:	OSV
RNP Edges:	Evaluated
Min DME Range:	3.0 NM
DME Types:	DME, VOR-DME, VORTAC
DME Include Angles:	30 to 150
Critical DMEs:	Allowed
DoD Facilities:	Not included
Foreign Facilities:	Not included
High DMEs:	Included
Low DMEs:	Included
Terminal DMEs:	Included
Flight Check DMEs:	Not selected
Higher Altitudes:	Not Evaluated
Near Maximum Altitude:	Not Evaluated
Automatic ESVs:	Enabled
Disabled DMEs:	None

DME/DME (Continued)										
DMEs Used										
#	Name	Lat/Lon	MAGVAR	Range	Type	Source	Critical	Status	Time	Distance
1	ATL	N33° 37' 44.68", W084° 26' 06.23"	5.0 W	130	H	IFPA	NO	Enabled	64.2 %	66.9 %
2	PDK	N33° 52' 32.27", W084° 17' 55.73"	5.0 W	40	L	IFPA	NO	Enabled	64.2 %	66.9 %

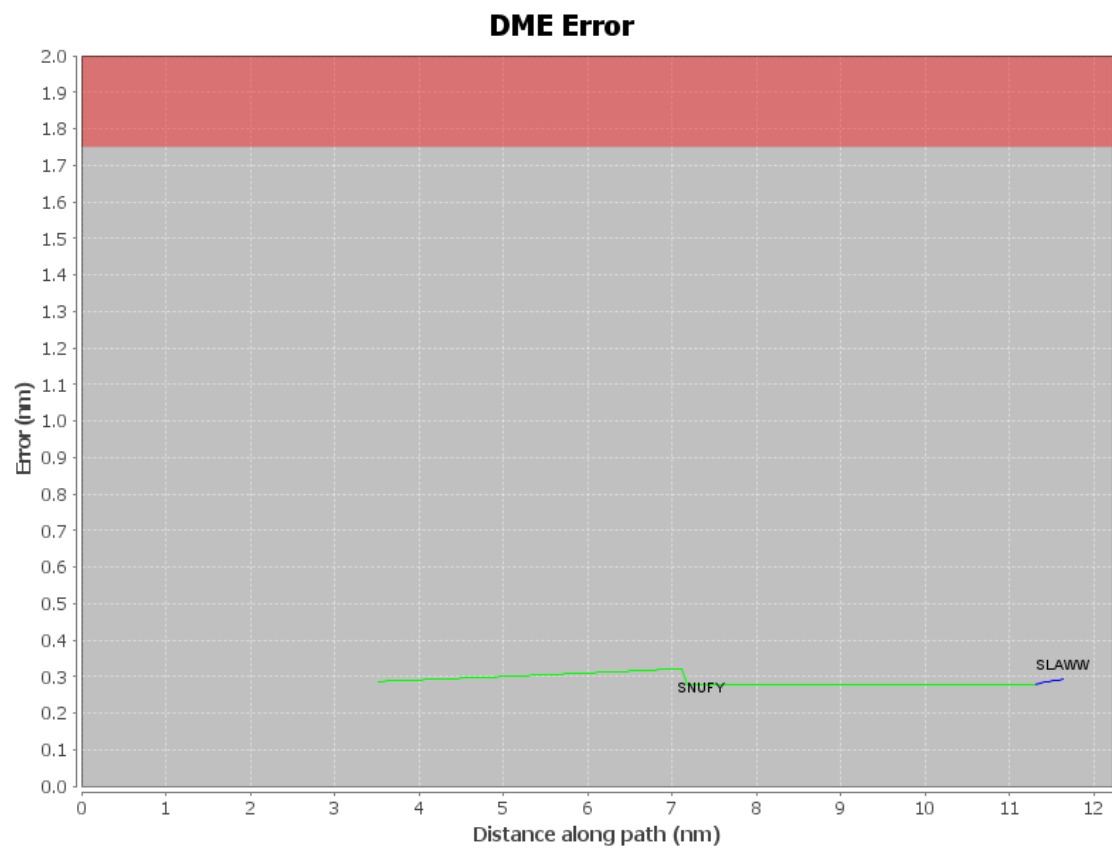
Flight Check DME Selection						
Distance [NM]	Selected DMEs					Alternate
0.0						
3.5	ATL	PDK				
11.4						

Inertial Drift Segments			
#	Start Location	End Location	Length [NM]
1	N33° 38' 58.32", W084° 26' 23.03"	N33° 39' 27.51", W084° 30' 29.96"	3.4806
2	N33° 38' 12.53", W084° 39' 10.22"	N33° 38' 04.33", W084° 39' 27.38"	0.275

Available DMEs by Waypoints		
Waypoint Before	Waypoint After	DME List
KATL:RW26R:DER	SNUFY	PDK, ATL
SNUFY	SLAWW	PDK, ATL

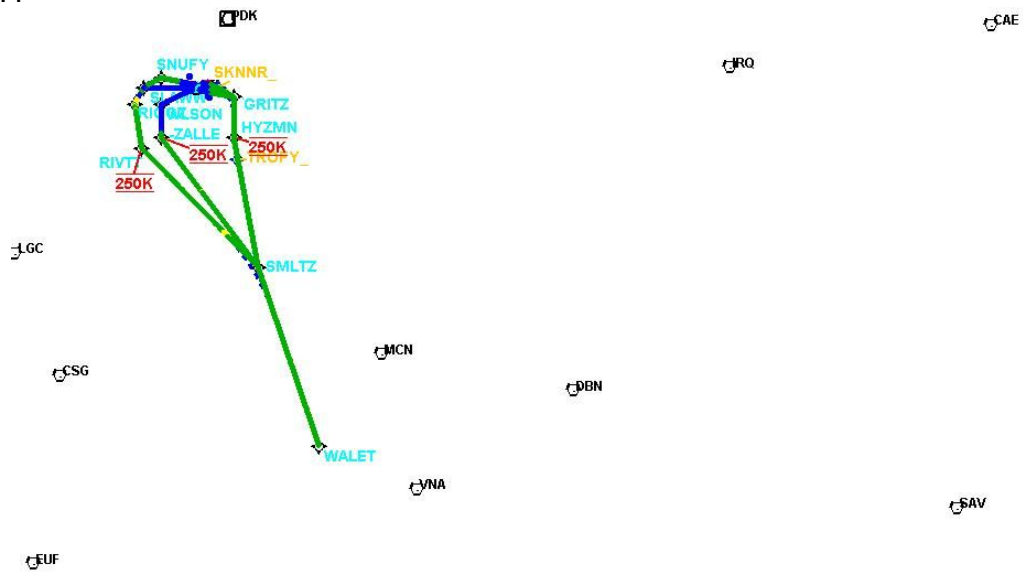
DME DME Assessment Results for SMLTZ3 path KATL:RW26R:DER_SLAWW

User Data Files								
#	File Name							
1	KATL SMLTZ SID.udt							
2	New Analysis.udt							
User DMEs								
#	Name	Lat/Lon	MAGVAR	Range	Elevation [ft]	Frequency	Replaces	Status
1	UDT ESV RMG RMG [IFPA]	N34° 09' 45.23", W085° 07' 09.87"	1.0 E	130	1147.8	115.4	UDT ESV RMG	
ESV:		Bearing [True]: 120.0° to 160.0° Bearing [Mag]: 119.0° to 159.0°				Arc Distance: Out to 65.0 NM Altitude: 4000.0 to 14000.0 ft		
2	UDT ESV PZD PZD [IFPA]	N31° 39' 18.74", W084° 17' 35.16"	2.0 W	40	292	116.1	UDT ESV PZD	
ESV:		Bearing [True]: 358.0° to 28.0° Bearing [Mag]: 360.0° to 30.0°				Arc Distance: Out to 95.0 NM Altitude: 6000.0 to 15500.0 ft		
3	UDT ESV DBN DBN [IFPA]	N32° 33' 48.46", W082° 49' 48.16"	5.0 W	40	305.7	113.1	UDT ESV DBN	
ESV:		Bearing [True]: 255.0° to 305.0° Bearing [Mag]: 260.0° to 310.0°				Arc Distance: Out to 80.0 NM Altitude: 8500.0 to 16000.0 ft		
4	UDT ESV AHN AHN [IFPA]	N33° 56' 51.34", W083° 19' 29.13"	0.0 E	40	792.7	109.6	UDT ESV AHN	
ESV:		Bearing [True]: 215.0° to 290.0° Bearing [Mag]: 215.0° to 290.0°				Arc Distance: Out to 70.0 NM Altitude: 4000.0 to 14000.0 ft		
5	VNA VNA [IFPA]	N32° 12' 48.39", W083° 29' 50.12"	1.0 E	40	300	116.5	VNA	
ESV:		Bearing [True]: 291.0° to 331.0° Bearing [Mag]: 290.0° to 330.0°				Arc Distance: Out to 68.0 NM Altitude: 2500.0 to 18000.0 ft		
6	UDT ESV LGC LGC [IFPA]	N33° 02' 56.83", W085° 12' 22.40"	1.0 E	130	798.4	115.6	UDT ESV LGC	
ESV:		Bearing [True]: 15.0° to 96.0° Bearing [Mag]: 14.0° to 95.0°				Arc Distance: Out to 70.0 NM Altitude: 4000.0 to 14000.0 ft		
7	ESV IRQ [IFPA] IRQ [IFPA]	N33° 42' 26.47", W082° 09' 43.43"	4.0 W	130	420	113.9	ESV IRQ [IFPA]	
ESV:		Bearing [True]: 221.0° to 261.0° Bearing [Mag]: 225.0° to 265.0°				Arc Distance: Out to 130.0 NM Altitude: 8500.0 to 20000.0 ft		



DME DME Assessment Results for SMLTZ3 path KATL:RW26R:DER_SLAWW

Graphic Depiction 1



DME DME Assessment Results for SMLTZ3 path KATL:RW27L:DER_SLAWW

Results Summary

Flyability:	Completed
DME/DME:	Completed - No Critical DMEs
Name:	David C-CTR Cook
Project File:	C:\Users\David C-CTR Cook\Documents\TARGETS STUFF\PROJECTS\ATL SIDs for 20220324\DME-DME\ATL SIDS\SMLTZ3\KATL SMLTZ3 (RNAV) SID_DME_210701.tgs
Output File:	C:\Users\David C-CTR Cook\Documents\TARGETS STUFF\PROJECTS\ATL SIDs for 20220324\DME-DME\ATL SIDS\SMLTZ3\KATL [IFPA] SMLTZ3 20210714_1741 EDT\KATL-RW27L-DER_SLAWW\KATL SMLTZ3 SID KATL RW27L SLAWW 20210714_1741 EDT.pdf
Procedure Name:	SMLTZ3
Software: DmeDmePlugin:	6.3.0
Date/Time:	07/14/2021 17:41 EDT
Databases:	DTED Level 0 MAX

Failures

No Failures

Warnings

No Warnings

Notes For Flight Check

None

Flight Plan

Name	Type	Lat/Lon	Altitude (ft)	VNAV Mode	Ground Speed (kts)	Turn Type	Leg Type
KATL:RW27L:DER	WP	N33° 37' 54.53", W084° 26' 52.68"	1026.1	VNAV	130	FLY_OVER	TF
SLAWW	WP	N33° 38' 04.33", W084° 39' 27.38"	3424.1	VNAV	200	FLY_BY	TF
Climb Gradient: 500.0 ft/NM up to 1527.0 ft MSL 200.0 ft/NM							

Flyability

Flight Type:	SID
Selected Airport:	KATL [IFPA]
Climb Gradient:	500.0 ft/NM up to 1527.0 ft MSL 200.0 ft/NM
Speeds:	130 at the Runway DER
	145 at the end of the VA or VI leg
	200 Ground Speed to 11000 FT
	240 Ground Speed to 18000 FT
	260 Ground Speed to 24000 FT
	340 Ground Speed above 24000 FT
Descent During a Turn:	Allowed
VNAV Mode:	Flight Plan

DME DME Assessment Results for SMLTZ3 path KATL:RW27L:DER_SLAWW

DME/DME	
RNP:	RNP 2
Flight Mode:	Manual
Line of Sight (DTED Level 0 Max):	Evaluated
Inertial Drift:	Enabled
Initial Drift:	0.558 NM
INS Drift Rate:	8.0 NM/Hour
Range Mode:	OSV
RNP Edges:	Evaluated
Min DME Range:	3.0 NM
DME Types:	DME, VOR-DME, VORTAC
DME Include Angles:	30 to 150
Critical DMEs:	Allowed
DoD Facilities:	Not included
Foreign Facilities:	Not included
High DMEs:	Included
Low DMEs:	Included
Terminal DMEs:	Included
Flight Check DMEs:	Not selected
Higher Altitudes:	Not Evaluated
Near Maximum Altitude:	Not Evaluated
Automatic ESVs:	Enabled
Disabled DMEs:	None

DME/DME (Continued)										
DMEs Used										
#	Name	Lat/Lon	MAGVAR	Range	Type	Source	Critical	Status	Time	Distance

Flight Check DME Selection						
Distance [NM]	Selected DMEs					Alternate
0.0						

Inertial Drift Segments			
#	Start Location	End Location	Length [NM]
1	N33° 37' 54.53", W084° 26' 55.25"	N33° 38' 04.33", W084° 39' 27.38"	10.4654

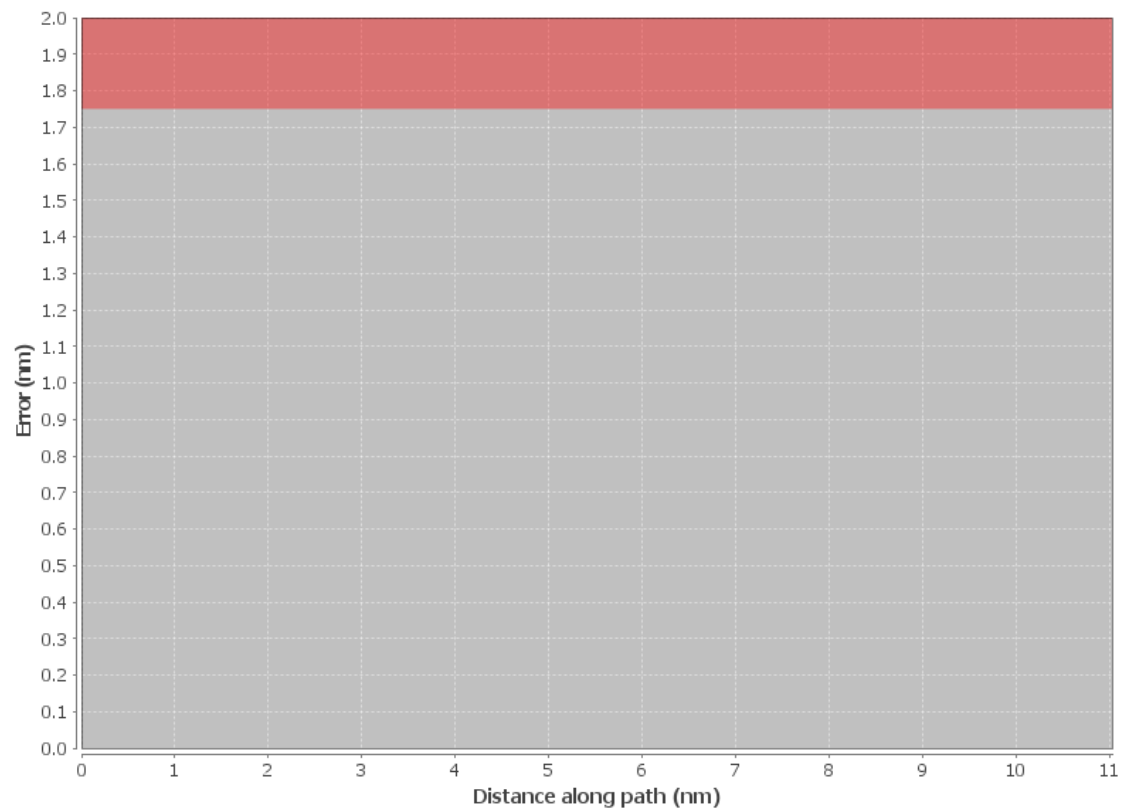
Available DMEs by Waypoints		
Waypoint Before	Waypoint After	DME List
KATL:RW27L:DER	SLAWW	

DME DME Assessment Results for SMLTZ3 path KATL:RW27L:DER_SLAWW

User Data Files								
#	File Name							
1	KATL SMLTZ SID.udt							
2	New Analysis.udt							
User DMEs								
#	Name	Lat/Lon	MAGVAR	Range	Elevation [ft]	Frequency	Replaces	Status
1	UDT ESV RMG RMG [IFPA]	N34° 09' 45.23", W085° 07' 09.87"	1.0 E	130	1147.8	115.4	UDT ESV RMG	
ESV:		Bearing [True]: 120.0° to 160.0° Bearing [Mag]: 119.0° to 159.0°				Arc Distance: Out to 65.0 NM Altitude: 4000.0 to 14000.0 ft		
2	UDT ESV PZD PZD [IFPA]	N31° 39' 18.74", W084° 17' 35.16"	2.0 W	40	292	116.1	UDT ESV PZD	
ESV:		Bearing [True]: 358.0° to 28.0° Bearing [Mag]: 360.0° to 30.0°				Arc Distance: Out to 95.0 NM Altitude: 6000.0 to 15500.0 ft		
3	UDT ESV DBN DBN [IFPA]	N32° 33' 48.46", W082° 49' 48.16"	5.0 W	40	305.7	113.1	UDT ESV DBN	
ESV:		Bearing [True]: 255.0° to 305.0° Bearing [Mag]: 260.0° to 310.0°				Arc Distance: Out to 80.0 NM Altitude: 8500.0 to 16000.0 ft		
4	UDT ESV AHN AHN [IFPA]	N33° 56' 51.34", W083° 19' 29.13"	0.0 E	40	792.7	109.6	UDT ESV AHN	
ESV:		Bearing [True]: 215.0° to 290.0° Bearing [Mag]: 215.0° to 290.0°				Arc Distance: Out to 70.0 NM Altitude: 4000.0 to 14000.0 ft		
5	VNA VNA [IFPA]	N32° 12' 48.39", W083° 29' 50.12"	1.0 E	40	300	116.5	VNA	
ESV:		Bearing [True]: 291.0° to 331.0° Bearing [Mag]: 290.0° to 330.0°				Arc Distance: Out to 68.0 NM Altitude: 2500.0 to 18000.0 ft		
6	UDT ESV LGC LGC [IFPA]	N33° 02' 56.83", W085° 12' 22.40"	1.0 E	130	798.4	115.6	UDT ESV LGC	
ESV:		Bearing [True]: 15.0° to 96.0° Bearing [Mag]: 14.0° to 95.0°				Arc Distance: Out to 70.0 NM Altitude: 4000.0 to 14000.0 ft		
7	ESV IRQ [IFPA] IRQ [IFPA]	N33° 42' 26.47", W082° 09' 43.43"	4.0 W	130	420	113.9	ESV IRQ [IFPA]	
ESV:		Bearing [True]: 221.0° to 261.0° Bearing [Mag]: 225.0° to 265.0°				Arc Distance: Out to 130.0 NM Altitude: 8500.0 to 20000.0 ft		

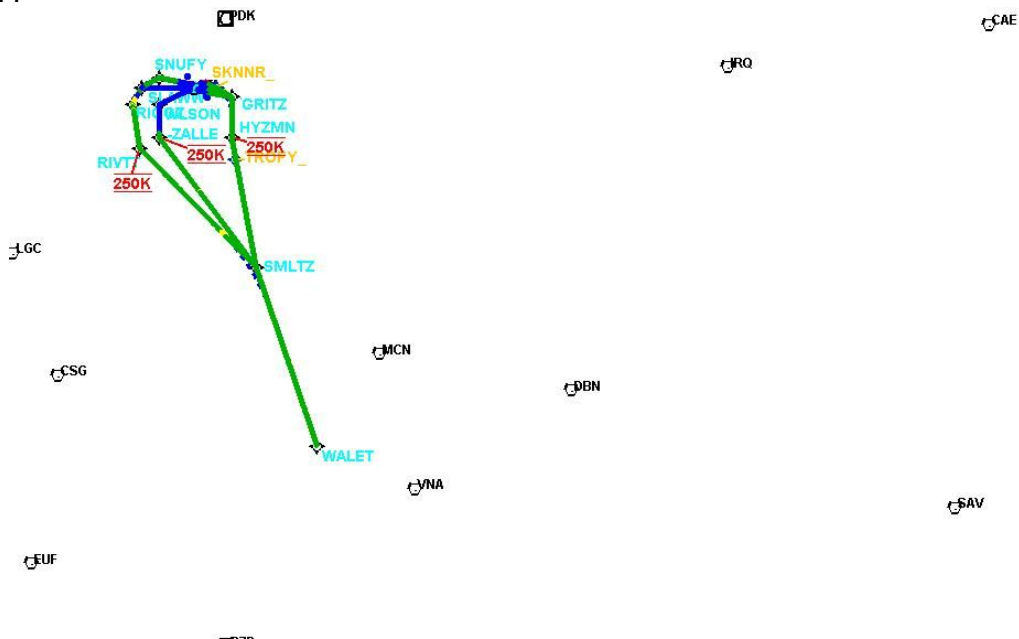
DME DME Assessment Results for SMLTZ3 path KATL:RW27L:DER_SLAWW

DME Error



DME DME Assessment Results for SMLTZ3 path KATL:RW27L:DER_SLAWW

Graphic Depiction 1



DME DME Assessment Results for SMLTZ3 path KATL:RW27R:DER_SLAWW

Results Summary

Flyability:	Completed
DME/DME:	Completed - No Critical DMEs
Name:	David C-CTR Cook
Project File:	C:\Users\David C-CTR Cook\Documents\TARGETS STUFF\PROJECTS\ATL SIDs for 20220324\DME-DME\ATL SIDS\SMLTZ3\KATL SMLTZ3 (RNAV) SID_DME_210701.tgs
Output File:	C:\Users\David C-CTR Cook\Documents\TARGETS STUFF\PROJECTS\ATL SIDs for 20220324\DME-DME\ATL SIDS\SMLTZ3\KATL [IFPA] SMLTZ3 20210714_1741 EDT\KATL-RW27R-DER_SLAWW\KATL SMLTZ3 SID KATL RW27R SLAWW 20210714_1741 EDT.pdf
Procedure Name:	SMLTZ3
Software: DmeDmePlugin:	6.3.0
Date/Time:	07/14/2021 17:41 EDT
Databases:	DTED Level 0 MAX

Failures

No Failures

Warnings

No Warnings

Notes For Flight Check

None

Flight Plan

Name	Type	Lat/Lon	Altitude (ft)	VNAV Mode	Ground Speed (kts)	Turn Type	Leg Type
KATL:RW27R:DER	WP	N33° 38' 04.94", W084° 26' 52.68"	1018.7	VNAV	130	FLY_OVER	TF
SLAWW	WP	N33° 38' 04.33", W084° 39' 27.38"	3424.1	VNAV	200	FLY_BY	TF
Climb Gradient: 500.0 ft/NM up to 1527.0 ft MSL 200.0 ft/NM							

Flyability

Flight Type:	SID
Selected Airport:	KATL [IFPA]
Climb Gradient:	500.0 ft/NM up to 1527.0 ft MSL 200.0 ft/NM
Speeds:	130 at the Runway DER
	145 at the end of the VA or VI leg
	200 Ground Speed to 11000 FT
	240 Ground Speed to 18000 FT
	260 Ground Speed to 24000 FT
	340 Ground Speed above 24000 FT
Descent During a Turn:	Allowed
VNAV Mode:	Flight Plan

DME DME Assessment Results for SMLTZ3 path KATL:RW27R:DER_SLAWW

DME/DME	
RNP:	RNP 2
Flight Mode:	Manual
Line of Sight (DTED Level 0 Max):	Evaluated
Inertial Drift:	Enabled
Initial Drift:	0.558 NM
INS Drift Rate:	8.0 NM/Hour
Range Mode:	OSV
RNP Edges:	Evaluated
Min DME Range:	3.0 NM
DME Types:	DME, VOR-DME, VORTAC
DME Include Angles:	30 to 150
Critical DMEs:	Allowed
DoD Facilities:	Not included
Foreign Facilities:	Not included
High DMEs:	Included
Low DMEs:	Included
Terminal DMEs:	Included
Flight Check DMEs:	Not selected
Higher Altitudes:	Not Evaluated
Near Maximum Altitude:	Not Evaluated
Automatic ESVs:	Enabled
Disabled DMEs:	None

DME/DME (Continued)										
DMEs Used										
#	Name	Lat/Lon	MAGVAR	Range	Type	Source	Critical	Status	Time	Distance

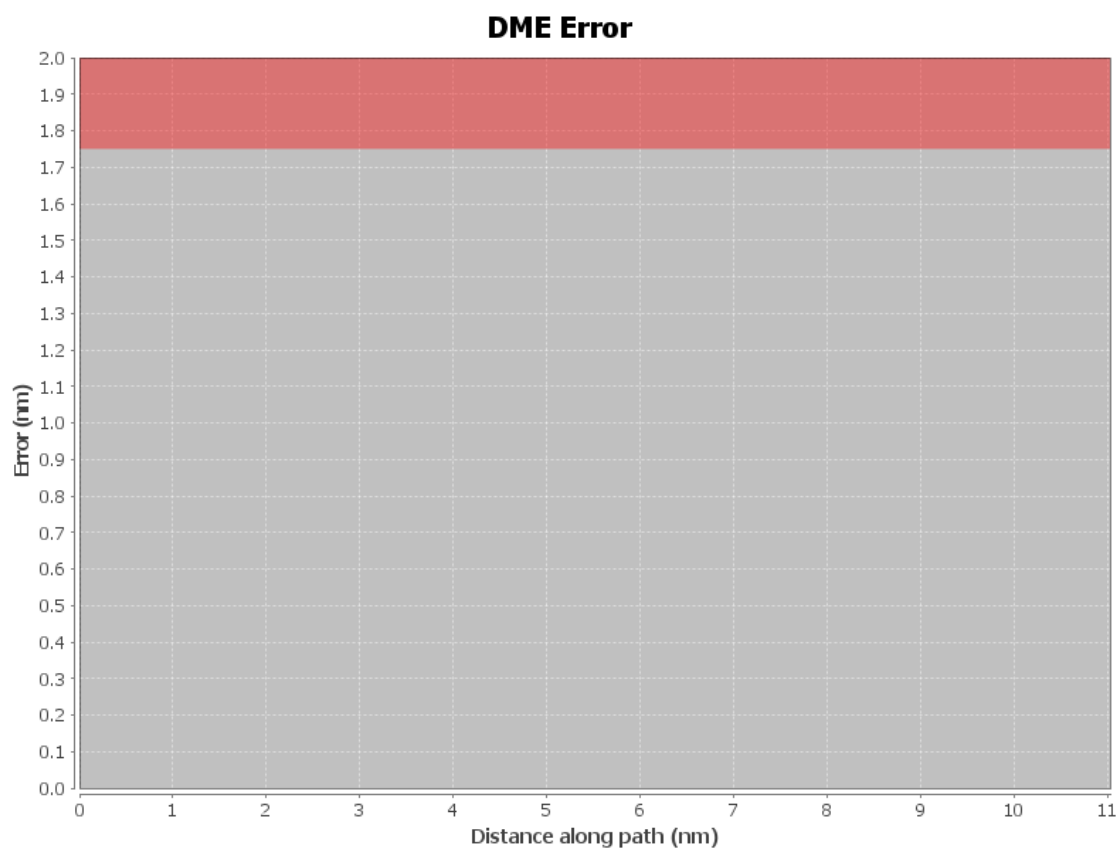
Flight Check DME Selection						
Distance [NM]	Selected DMEs					Alternate
0.0						

Inertial Drift Segments			
#	Start Location	End Location	Length [NM]
1	N33° 38' 04.94", W084° 26' 55.20"	N33° 38' 04.33", W084° 39' 27.38"	10.4644

Available DMEs by Waypoints		
Waypoint Before	Waypoint After	DME List
KATL:RW27R:DER	SLAWW	

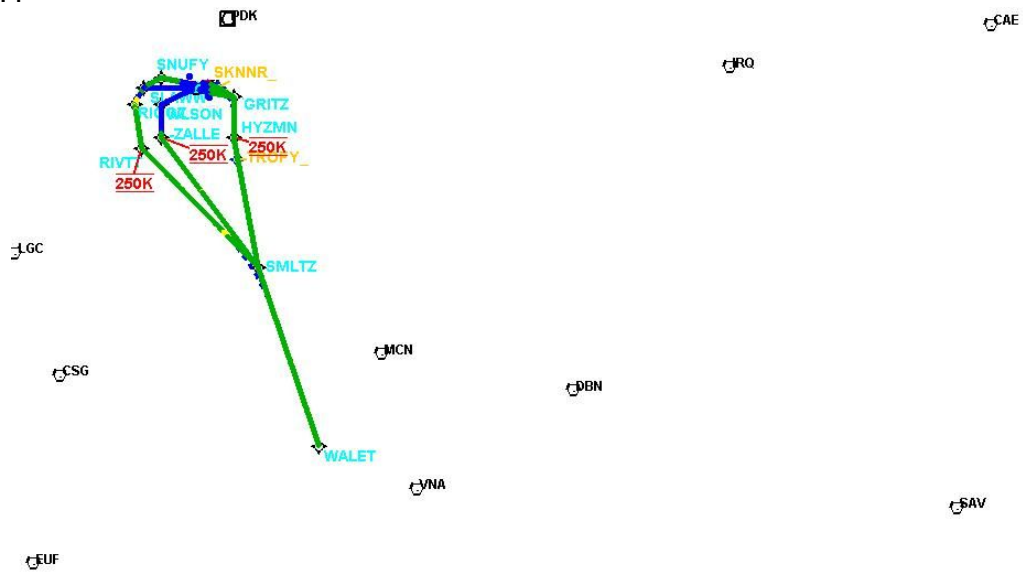
DME DME Assessment Results for SMLTZ3 path KATL:RW27R:DER_SLAWW

User Data Files								
#	File Name							
1	KATL SMLTZ SID.udt							
2	New Analysis.udt							
User DMEs								
#	Name	Lat/Lon	MAGVAR	Range	Elevation [ft]	Frequency	Replaces	Status
1	UDT ESV RMG RMG [IFPA]	N34° 09' 45.23", W085° 07' 09.87"	1.0 E	130	1147.8	115.4	UDT ESV RMG	
ESV:		Bearing [True]: 120.0° to 160.0° Bearing [Mag]: 119.0° to 159.0°				Arc Distance: Out to 65.0 NM Altitude: 4000.0 to 14000.0 ft		
2	UDT ESV PZD PZD [IFPA]	N31° 39' 18.74", W084° 17' 35.16"	2.0 W	40	292	116.1	UDT ESV PZD	
ESV:		Bearing [True]: 358.0° to 28.0° Bearing [Mag]: 360.0° to 30.0°				Arc Distance: Out to 95.0 NM Altitude: 6000.0 to 15500.0 ft		
3	UDT ESV DBN DBN [IFPA]	N32° 33' 48.46", W082° 49' 48.16"	5.0 W	40	305.7	113.1	UDT ESV DBN	
ESV:		Bearing [True]: 255.0° to 305.0° Bearing [Mag]: 260.0° to 310.0°				Arc Distance: Out to 80.0 NM Altitude: 8500.0 to 16000.0 ft		
4	UDT ESV AHN AHN [IFPA]	N33° 56' 51.34", W083° 19' 29.13"	0.0 E	40	792.7	109.6	UDT ESV AHN	
ESV:		Bearing [True]: 215.0° to 290.0° Bearing [Mag]: 215.0° to 290.0°				Arc Distance: Out to 70.0 NM Altitude: 4000.0 to 14000.0 ft		
5	VNA VNA [IFPA]	N32° 12' 48.39", W083° 29' 50.12"	1.0 E	40	300	116.5	VNA	
ESV:		Bearing [True]: 291.0° to 331.0° Bearing [Mag]: 290.0° to 330.0°				Arc Distance: Out to 68.0 NM Altitude: 2500.0 to 18000.0 ft		
6	UDT ESV LGC LGC [IFPA]	N33° 02' 56.83", W085° 12' 22.40"	1.0 E	130	798.4	115.6	UDT ESV LGC	
ESV:		Bearing [True]: 15.0° to 96.0° Bearing [Mag]: 14.0° to 95.0°				Arc Distance: Out to 70.0 NM Altitude: 4000.0 to 14000.0 ft		
7	ESV IRQ [IFPA] IRQ [IFPA]	N33° 42' 26.47", W082° 09' 43.43"	4.0 W	130	420	113.9	ESV IRQ [IFPA]	
ESV:		Bearing [True]: 221.0° to 261.0° Bearing [Mag]: 225.0° to 265.0°				Arc Distance: Out to 130.0 NM Altitude: 8500.0 to 20000.0 ft		



DME DME Assessment Results for SMLTZ3 path KATL:RW27R:DER_SLAWW

Graphic Depiction 1



DME DME Assessment Results for SMLTZ3 path KATL:RW28:DER_SMLTZ

Results Summary

Flyability:	Completed
DME/DME:	Completed - No Critical DMEs
Name:	David C-CTR Cook
Project File:	C:\Users\David C-CTR Cook\Documents\TARGETS STUFF\PROJECTS\ATL SIDs for 20220324\DME-DME\ATL SIDS\SMLTZ3\KATL SMLTZ3 (RNAV) SID_DME_210701.tgs
Output File:	C:\Users\David C-CTR Cook\Documents\TARGETS STUFF\PROJECTS\ATL SIDs for 20220324\DME-DME\ATL SIDS\SMLTZ3\KATL [IFPA] SMLTZ3 20210714_1741 EDT\KATL-RW28-DER_SMLTZ\KATL SMLTZ3 SID KATL RW28 SMLTZ 20210714_1741 EDT.pdf
Procedure Name:	SMLTZ3
Software: DmeDmePlugin:	6.3.0
Date/Time:	07/14/2021 17:41 EDT
Databases:	DTED Level 0 MAX

Failures

No Failures

Warnings

No Warnings

Notes For Flight Check

None

Flight Plan

Name	Type	Lat/Lon	Altitude (ft)	VNAV Mode	Ground Speed (kts)	Turn Type	Leg Type
KATL:RW28:DER	WP	N33° 37' 12.98", W084° 26' 52.36"	1000.3	VNAV	130	FLY_BY	TF
WLSN	WP	N33° 34' 26.31", W084° 35' 04.65"	2812.6	VNAV	200	FLY_BY	TF
ZALLE	WP	N33° 27' 25.53", W084° 35' 04.18"	4212.6	VNAV	250	FLY_BY	TF
SMLTZ	WP	N32° 59' 54.82", W084° 10' 21.22"	10000	VNAV	250	FLY_BY	TF
Climb Gradient: 500.0 ft/NM up to 1527.0 ft MSL 200.0 ft/NM							

Flyability

Flight Type:	SID
Selected Airport:	KATL [IFPA]
Climb Gradient:	500.0 ft/NM up to 1527.0 ft MSL 200.0 ft/NM
Speeds:	130 at the Runway DER
	145 at the end of the VA or VI leg
	200 Ground Speed to 11000 FT
	240 Ground Speed to 18000 FT
	260 Ground Speed to 24000 FT
	340 Ground Speed above 24000 FT
Descent During a Turn:	Allowed
VNAV Mode:	Flight Plan

DME DME Assessment Results for SMLTZ3 path KATL:RW28:DER_SMLTZ

DME/DME	
RNP:	RNP 2
Flight Mode:	Manual
Line of Sight (DTED Level 0 Max):	Evaluated
Inertial Drift:	Enabled
Initial Drift:	0.558 NM
INS Drift Rate:	8.0 NM/Hour
Range Mode:	OSV
RNP Edges:	Evaluated
Min DME Range:	3.0 NM
DME Types:	DME, VOR-DME, VORTAC
DME Include Angles:	30 to 150
Critical DMEs:	Allowed
DoD Facilities:	Not included
Foreign Facilities:	Not included
High DMEs:	Included
Low DMEs:	Included
Terminal DMEs:	Included
Flight Check DMEs:	Not selected
Higher Altitudes:	Not Evaluated
Near Maximum Altitude:	Not Evaluated
Automatic ESVs:	Enabled
Disabled DMEs:	None

DME/DME (Continued)										
DMEs Used										
#	Name	Lat/Lon	MAGVAR	Range	Type	Source	Critical	Status	Time	Distance
1	LGC	N33° 02' 56.83", W085° 12' 22.40"	1.0 E	130	H	IFPA	NO	Enabled	67 %	72.3 %
2	ATL	N33° 37' 44.68", W084° 26' 06.23"	5.0 W	130	H	IFPA	NO	Enabled	64.2 %	69.3 %
3	PDK	N33° 52' 32.27", W084° 17' 55.73"	5.0 W	40	L	IFPA	NO	Enabled	29.7 %	32 %
4	PZD	N31° 39' 18.74", W084° 17' 35.16"	2.0 W	40	L	IFPA	NO	Enabled	18.4 %	19.9 %
5	VNA	N32° 12' 48.39", W083° 29' 50.12"	1.0 E	40	L	IFPA	NO	Enabled	18.2 %	19.7 %
6	AHN	N33° 56' 51.34", W083° 19' 29.13"	0.0 E	40	L	IFPA	NO	Enabled	0.3 %	0.3 %
7	DBN	N32° 33' 48.46", W082° 49' 48.16"	5.0 W	40	L	IFPA	NO	Enabled	11.8 %	12.8 %
8	RMG	N34° 09' 45.23", W085° 07' 09.87"	1.0 E	130	H	IFPA	NO	Enabled	29.7 %	32 %
9	MCN	N32° 41' 28.27", W083° 38' 49.86"	1.0 E	130	H	IFPA	NO	Enabled	12.7 %	13.7 %
10	IRQ	N33° 42' 26.47", W082° 09' 43.43"	4.0 W	130	H	IFPA	NO	Enabled	24.5 %	26.5 %

Flight Check DME Selection						
Distance [NM]	Selected DMEs					Alternate
0.0						
13.4	RMG	LGC	ATL	PDK		
28.9	RMG	AHN	LGC	ATL	PDK	
29.1	LGC	ATL				
35.9	LGC	ATL	IRQ			
39.2	LGC	ATL	PZD	IRQ		
39.3	LGC	ATL	PZD	VNA	IRQ	
47.4	PZD	LGC	DBN	VNA	MCN	IRQ
48.8	PZD	DBN	MCN	VNA	IRQ	

DME DME Assessment Results for SMLTZ3 path KATL:RW28:DER_SMLTZ

Inertial Drift Segments

#	Start Location	End Location	Length [NM]
1	N33° 37' 12.98", W084° 26' 54.88"	N33° 28' 28.98", W084° 35' 04.25"	13.3764

Available DMEs by Waypoints

Waypoint Before	Waypoint After	DME List
KATL:RW28:DER	WLSON	
WLSON	ZALLE	PDK, ATL, LGC, RMG
ZALLE	SMLTZ	DBN, PDK, AHN, VNA, ATL, LGC, IRQ, MCN, PZD, RMG

User Data Files

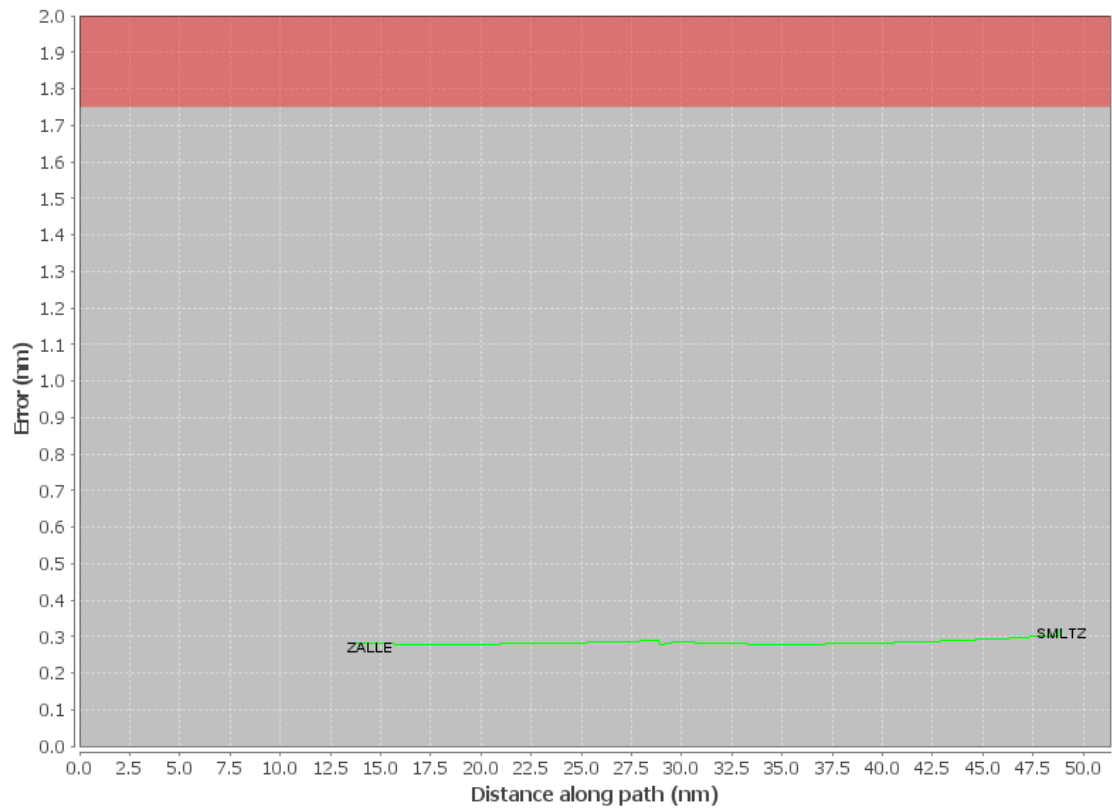
#	File Name
1	KATL SMLTZ SID.udt
2	New Analysis.udt

User DMEs

#	Name	Lat/Lon	MAGVAR	Range	Elevation [ft]	Frequency	Replaces	Status
1	UDT ESV RMG RMG [IFPA]	N34° 09' 45.23", W085° 07' 09.87"	1.0 E	130	1147.8	115.4	UDT ESV RMG	
ESV:		Bearing [True]: 120.0° to 160.0° Bearing [Mag]: 119.0° to 159.0°				Arc Distance: Out to 65.0 NM Altitude: 4000.0 to 14000.0 ft		
2	UDT ESV PZD PZD [IFPA]	N31° 39' 18.74", W084° 17' 35.16"	2.0 W	40	292	116.1	UDT ESV PZD	
ESV:		Bearing [True]: 358.0° to 28.0° Bearing [Mag]: 360.0° to 30.0°				Arc Distance: Out to 95.0 NM Altitude: 6000.0 to 15500.0 ft		
3	UDT ESV DBN DBN [IFPA]	N32° 33' 48.46", W082° 49' 48.16"	5.0 W	40	305.7	113.1	UDT ESV DBN	
ESV:		Bearing [True]: 255.0° to 305.0° Bearing [Mag]: 260.0° to 310.0°				Arc Distance: Out to 80.0 NM Altitude: 8500.0 to 16000.0 ft		
4	UDT ESV AHN AHN [IFPA]	N33° 56' 51.34", W083° 19' 29.13"	0.0 E	40	792.7	109.6	UDT ESV AHN	
ESV:		Bearing [True]: 215.0° to 290.0° Bearing [Mag]: 215.0° to 290.0°				Arc Distance: Out to 70.0 NM Altitude: 4000.0 to 14000.0 ft		
5	VNA VNA [IFPA]	N32° 12' 48.39", W083° 29' 50.12"	1.0 E	40	300	116.5	VNA	
ESV:		Bearing [True]: 291.0° to 331.0° Bearing [Mag]: 290.0° to 330.0°				Arc Distance: Out to 68.0 NM Altitude: 2500.0 to 18000.0 ft		
6	UDT ESV LGC LGC [IFPA]	N33° 02' 56.83", W085° 12' 22.40"	1.0 E	130	798.4	115.6	UDT ESV LGC	
ESV:		Bearing [True]: 15.0° to 96.0° Bearing [Mag]: 14.0° to 95.0°				Arc Distance: Out to 70.0 NM Altitude: 4000.0 to 14000.0 ft		
7	ESV IRQ [IFPA] IRQ [IFPA]	N33° 42' 26.47", W082° 09' 43.43"	4.0 W	130	420	113.9	ESV IRQ [IFPA]	
ESV:		Bearing [True]: 221.0° to 261.0° Bearing [Mag]: 225.0° to 265.0°				Arc Distance: Out to 130.0 NM Altitude: 8500.0 to 20000.0 ft		

DME DME Assessment Results for SMLTZ3 path KATL:RW28:DER_SMLTZ

DME Error



DME DME Assessment Results for SMLTZ3 path KATL:RW28:DER_SMLTZ

Graphic Depiction 1

